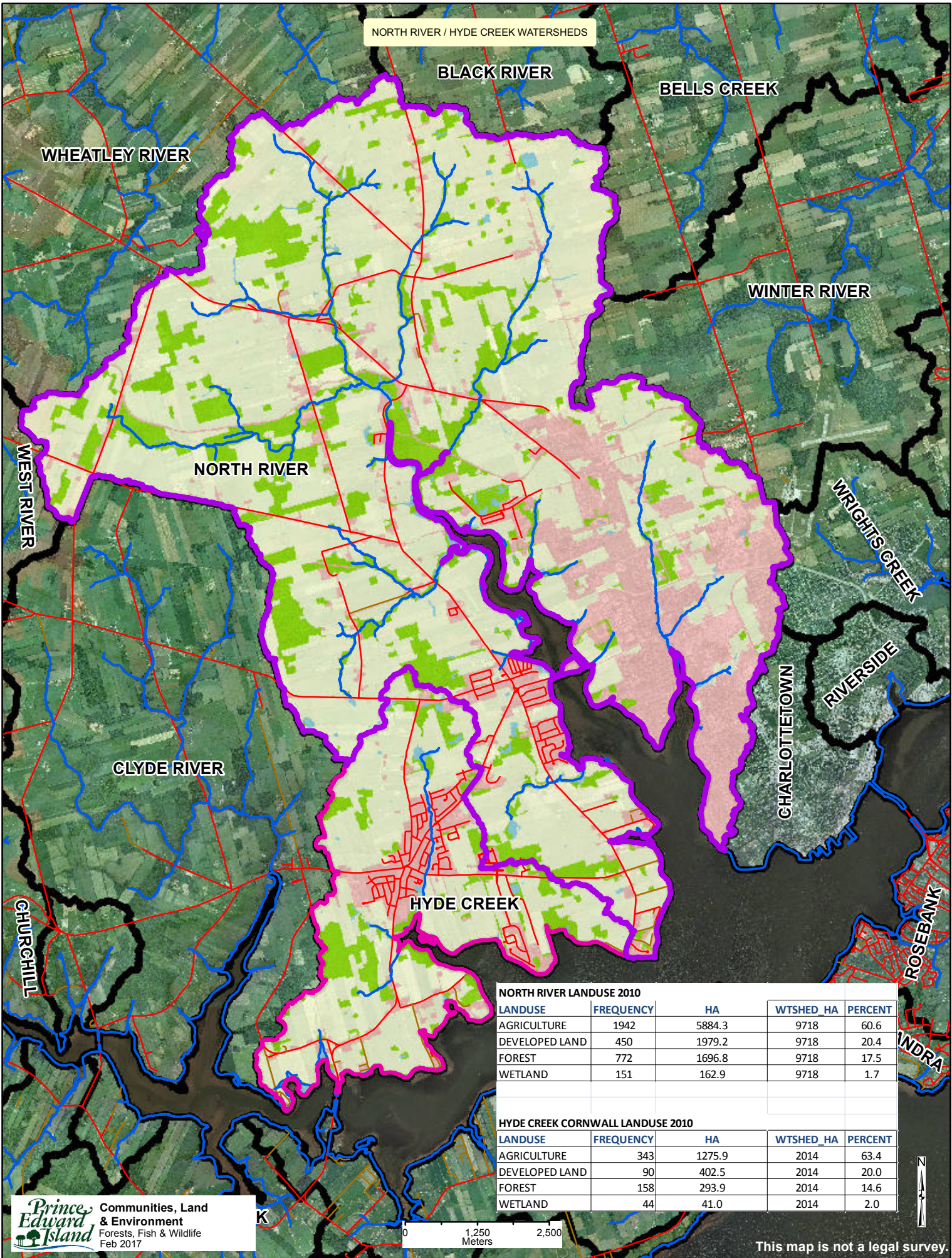


NORTH RIVER / HYDE CREEK WATERSHEDS



**NORTH RIVER LANDUSE 2010**

LANDUSE	FREQUENCY	HA	WTSHEd_HA	PERCENT
AGRICULTURE	1942	5884.3	9718	60.6
DEVELOPED LAND	450	1979.2	9718	20.4
FOREST	772	1696.8	9718	17.5
WETLAND	151	162.9	9718	1.7

**HYDE CREEK CORNWALL LANDUSE 2010**

LANDUSE	FREQUENCY	HA	WTSHEd_HA	PERCENT
AGRICULTURE	343	1275.9	2014	63.4
DEVELOPED LAND	90	402.5	2014	20.0
FOREST	158	293.9	2014	14.6
WETLAND	44	41.0	2014	2.0