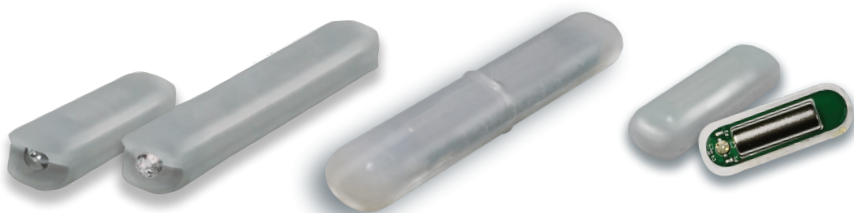


SmartSENSE® wireless stir bars

- Continuous pH monitoring with pH*live*™
- Verification & documentation of actual spin with TrueSpin™
- Tight thermal control with dual temperature sensing
- Wireless access for remote monitoring & control
- Download of detailed data log for documentation and reporting

Endless applications

- Preparing buffer solutions
- Performing titration
- Developing formulations
- Inert atmosphere reactions
- Quality Control
- GMP/GLP environments
- Pilot manufacturing
- Regulated environments



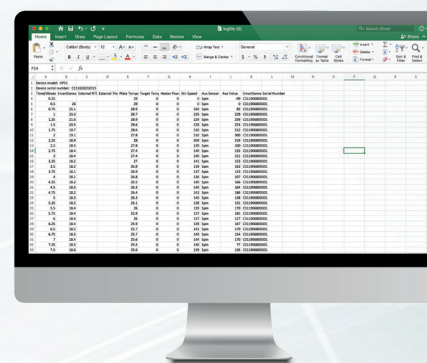
The growing family of smartSENSE® wireless stir bars is eliminating the need for external probes, wires and meters in the lab.

Simplify your lab setup

Temperature, Spin and pH Sensing Stir Bars WiFi Digital Programmable Hotplate Stirrer

Save valuable space with a single smartSENSE® system for heating and stirring as well as measurement, control and tracking of temperature, spin and pH.

The smartSENSE® WiFi chemical base station featuring an integrated digital programmable hotplate stirrer and RFID reader is the hub of the smartSENSE technology platform. The unit may be integrated with existing lab management or automation systems.



The smartSENSE® lab setup may be monitored and controlled from any device with a web browser. Connect directly via WiFi or your network.

smartSENSE[®] Specifications

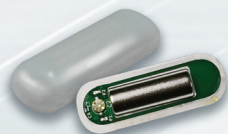
Wireless temperature, spin and pH/live™ sensing stir bars
WiFi Digital Programmable Hotplate Stirrer

smartSENSE[®] Stir Bar Temperature



Temperature range: 0-100degC/32-212degF
Length: 40mm/1.6in and 75mm/3in
Magnet: Neodymium
Power & communication: Wireless RFID
Temperature: Dual sensors
Material: Solvent resistant EFEP Fluoropolymer
Accuracy: +/- 1degC
Read distance: 1.4in
Onboard memory for ID and calibration

smartSENSE[®] TrueSpin™ Temperature & Spin



Temperature range: 0-100degC/32-212degF
Spin accelerometer: 60-1000RPM
Length: 40mm/1.6in
Magnet: Neodymium
Power & communication: Wireless RFID
Temperature: Dual sensors
Material: Solvent resistant EFEP Fluoropolymer
Accuracy: +/- 1degC
Read distance: 1.4in
Onboard memory for ID and calibration

smartSENSE[®] pHlive™ Temperature & pH



NEW

Temperature range: 0-100degC/32-212degF
Sensor pH range: 0-14
Length: 40mm/1.6in and 75mm/3in
Magnet: Neodymium
Power & communication: Wireless RFID
Temperature: Dual sensors
Accuracy: +/- 1degC and pH +/- 0.005
Read distance: 1.4in
Onboard memory for ID and calibration

smartSENSE[®] WiFi Digital Programmable Hotplate Stirrer:

Temperature range: 20-400degC/752degF
Communication: WiFi, USB, RFID and Ethernet
Stirring speed: 60-1000RPM
Plate dimensions: 7x7in
Power supply: 120V 60Hz
Instrument weight: 2.1kg/4.6lbs
Connections: TC and RTD External temperature probe

Features

Accessible for lab automation, remote monitoring & control
Software upgradeable to support future sensing features
Remote access and download of data logs



Part #	Description
00102	smartSENSE Control Station / Digital Prog Hotplate Stirrer, 115V
00202	smartSENSE [®] Temp Stir Bar, 40mm
00204	smartSENSE [®] TrueSpin™ Temp & Spin Stir Bar, 40mm
00206	smartSENSE [®] Temp Stir Bar, 75mm
00208	smartSENSE [®] pHlive™ Temp & pH Stir Bar, 40mm
00210	smartSENSE [®] pHlive™ Temp & pH Stir Bar, 75mm