

**TAB
LET.**



TAB LET.

TABLET, DESIGN E FUNZIONALITA' *TABLET, DESIGN AND FUNCTIONALITY*



I modelli CREO Kitchens si evolvono e seguono nuovi modi di vivere la cucina: tra le novità spicca Tablet, cucina moderna, interamente Made in Italy, versatile e personalizzabile. In questo catalogo sono moltissime le soluzioni proposte per arricchire l'ambiente cucina di atmosfera.

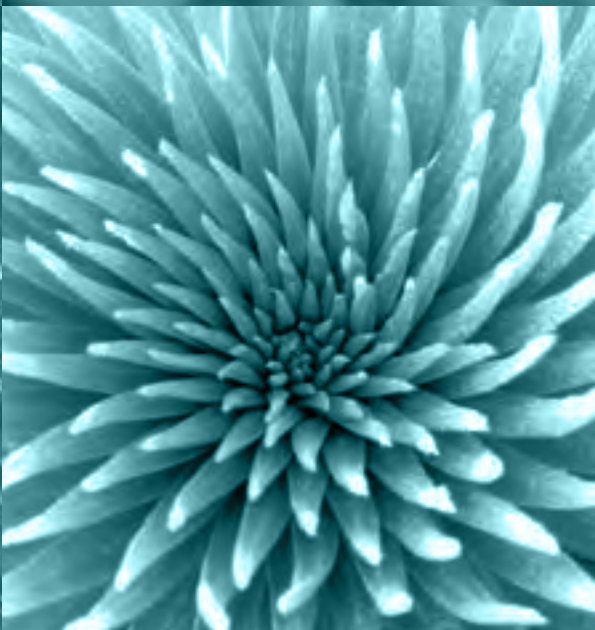
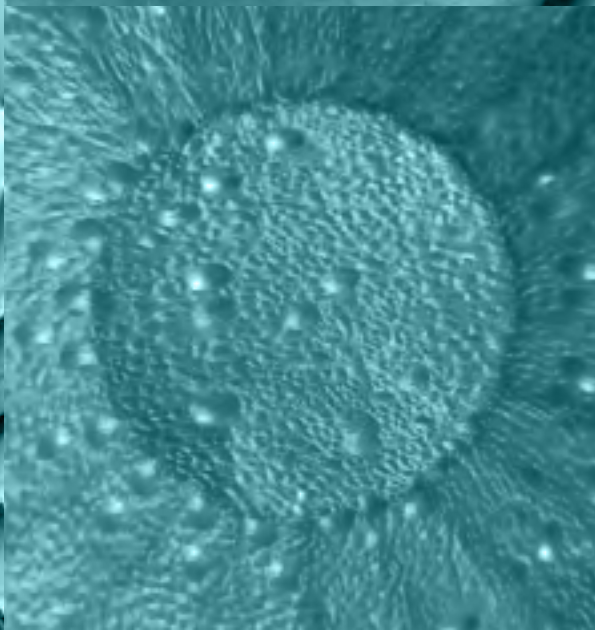
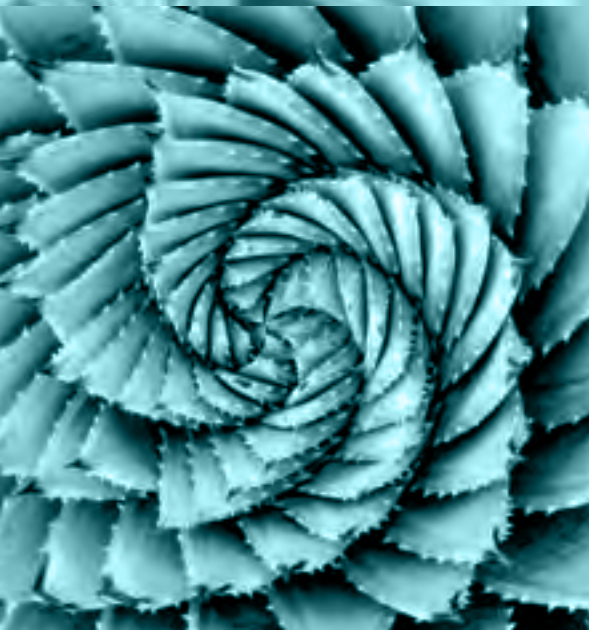
Tablet è tailor made, offre una gamma di colori, finiture e dettagli di stile per poter così 'cucirla' secondo il gusto e le necessità di spazio e di utilizzo.

Tablet interpreta un mood di tendenza che vede l'ambiente cucina diventare spazio multifunzionale e sfaccettato: informale, conviviale, accogliente, rassicurante, intimo. Le suggestioni sono tante e ognuno può scegliere quella che è più consona al suo carattere, con la garanzia, sempre e comunque, di una scelta di qualità.

CREO Kitchens models evolve according to the new ways of living the kitchen: among the latest design proposals, the modern kitchen Tablet, entirely Made in Italy, versatile and customizable, stands out. This catalogue presents a wide variety of solutions specifically conceived to enrich the kitchen environment with atmosphere.

Tablet is tailor-made and comes in a vast array of colours, finishes and style details, so as to be customized in accordance to the different tastes and needs in terms of space and usage.

Tablet interprets a current trend whereby the kitchen becomes a multi-purpose and multi-faceted space: informal, convivial, comfortable, reassuring, cosy. Among the many suggestions, everybody can select the one which best suits his/her own personality, always being guaranteed to make a quality-assured choice.



INDEX

01



NECK

p.06

02



BRIDGE

p.12

03



HEAD

p.18

04



NECK

p.24

05



HEAD

p.30

06



HEAD

p.36

07



NECK
BRIDGE

p.42

08



NECK

p.48

09



NECK

p.54

10



BRIDGE

p.60

11



BRIDGE

p.66

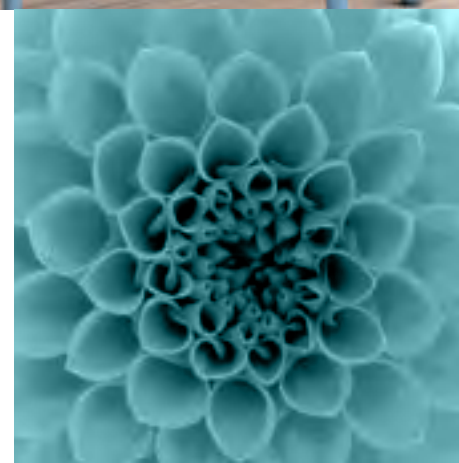


ESSENZA MINIMALE

Colonne melaminico malta bianco, basi laccato antracite lucido. Top silestone kensho suede e gola finitura brill. Elemento a giorno laccato cenere.

MINIMAL ESSENCE

White melamine mortar columns, anthracite glossy lacquered bases. Silestone kensho suede top and groove handle with polish finish. Ash-coloured lacquered open shelving.





TAB
LET



Minimale e funzionale grazie agli ampi spazi contenitivi. L'elemento a giorno alleggerisce lo spazio, dando alla cucina un'apertura sul living.

Minimal and functional, thanks to the wide storage spaces. The open shelving lightens the space, providing the kitchen with an opening onto the living.

02

BRIDGE

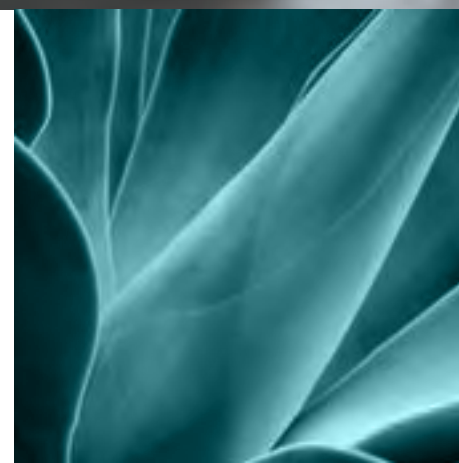


NATURALE MODERNITÀ

Basi, colonne e mensole melaminico bianco opaco con bordo in simil multistrato, pensili laccato bianco lucido. Maniglia in tinta con l'anta e supporto in vero multistrato.

NATURAL MODERNITY

Matt white melamine columns, bases and shelves with imitation-plywood edge, glossy white lacquered cabinets. Handle matching the cabinet front and real plywood support.



TAB
LET



TAB
LET



Il profilo in simil multistrato rende particolare questa cucina, semplice e unica grazie alla cura nei dettagli come la maniglia coordinata al colore dell'anta e caratterizzata dal supporto in multistrato. Gli accessori sottopensile la rendono moderna e funzionale.

The imitation-plywood outline makes this kitchen peculiar, simple and unique, thanks to the attention to details such as the handle matching the cabinet front and featuring a plywood support. The under wall unit accessories makes it modern and functional. The cupboard from the Mixo series, with bronze mortar finish and desert pins, adds an innovative touch.



03

HEAD

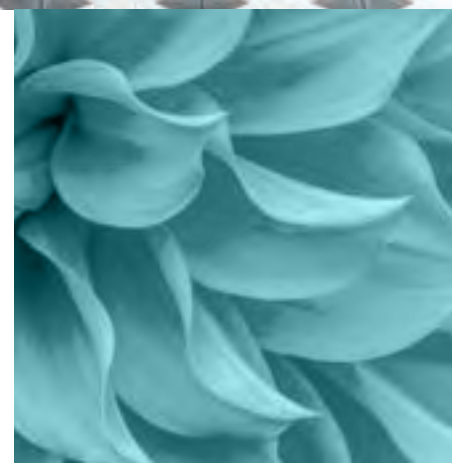


RICERCATE PIACEVOLEZZE

Basi e colonne rovere dark, pensili e isola porcellana soft matt. Zoccoli e maniglie titanio.

REFINED DETAILS

Dark durmast bases and columns, soft matt porcelain cabinets and island. Titanium plinth and handles.



TAB
LET



TABLET



Lo stile nordico si fonde in questa composizione dal design moderno e ricercato con il carattere retrò degli elementi a giorno verde lichene e delle ante in vetro flutes. Una sintesi di stili, colori e materiali innovativa e affascinante.

This composition is marked by a modern and sophisticated design and combines nordic style with the retro flair of lichen green open shelvings and of flutes glass cabinet fronts. An innovative and charming synthesis of styles, colours and materials.



04

NECK



POP KITCHEN

Basi e colonne a sinistra finitura molata e colonne a destra e isola rovere venere. Elementi a giorno verde positano. Top laminato acciottolato. Gola e zoccolo brill.

POP KITCHEN

Bases and columns on the left grinding finish and columns on the right and venus oak island. Positano green open shelving. Laminated stoney top. Polish groove handle and plinth.

TAB
LET



TAB
LET



Contrasti di colori e volumi in una cucina dal design moderno e funzionale. La comoda isola centrale e i pensili a giorno assicurano comfort e praticità, in un vivace gioco di pieni e vuoti. Funzionale il nuovo sottopensile Grid.

Contrasts of colours and volumes in a kitchen where modern design joins functionality. The useful central island and the open cabinets ensure comfort and convenience, in a vibrant play of filled and empty spaces. The new under wall unit Grid is an additional element of functionality.

**TAB
LET**



CROMATICHE SUGGESTIONI

Basi e colonne rovere luna. Basi sospese con vetro flutes e pensili desert lucido. Top bronzo doha.

CHROMATIC SUGGESTIONS

Moon oak bases and columns. Suspended bases with flutes glass and glossy desert cabinets. Bronze doha top.





TAB
LET



Una cucina ampia, dai dettagli preziosi. Le basi sospese in vetro flutes danno un tocco di originalità alla composizione e ne esaltano la luminosità. Aperta al living con una soluzione compositiva che alterna la praticità dei vani chiusi alla leggerezza e funzionalità degli elementi a giorno e dei nuovi totem.

A large kitchen, rich in precious details. The flutes glass suspended bases lend a touch of originality to the composition and enhance its brightness. The kitchen opens to the living through a compositional solution which alternates the practicality of closed spaces to the lightness and functionality of open shelving and new totems.



**TAB
LET.**

06

HEAD



LINEARE ORIGINALITÀ

Basi finitura molara opaco, pensili e colonne arena opaco e elementi a giorno grigio Kenia. Top bardiglio plamky, elemento a giorno "modular" finitura titanio.

LINEAR ORIGINALITY

Grinding finish matt bases, matt arena cabinets and columns and Kenya grey open shelving. Plamky Bardiglio top, "modular" open shelving with titanium finish.



TAB
LET



TAB
LET



Un design moderno e dinamico caratterizza questa cucina dallo stile lineare. L'alternanza di vani chiusi ed elementi a giorno crea geometrie inedite, giochi di spazi e di volumi di concreta funzionalità. Le nuances dei colori accentuano l'originalità dell'ambiente. Pratica e creativa.

A modern and dynamic design characterizes this kitchen featuring a linear style. The alternation of closed spaces and open shelving creates innovative geometries, plays of spaces and volumes of practical functionality. The colour shades highlight the peculiarity of the room. Practical and creative.



07

NECK
BRIDGE



GIOCO DI EQUILIBRI

Colonne e pensili porcellana soft matt, basi e pensili rovere arizona, top laminato casablanca finitura touch, totem con mensole arizona e porcellana con struttura titanio.

A GAME OF BALANCES

Soft matt porcelain columns and cabinets, Arizona oak bases and cabinets, touch finish casablanca laminated top, totem with arizona shelves and porcelain with titanium structure.



TAB
LET



TAB
LET



Atmosfera piacevole e vivace in questo ambiente, frutto di sapiente armonia di materiali, spazi e volumi. Elementi a giorno, colonne chiuse e cestoni disegnano una spazialità comoda e funzionale. Alleggerisce il tutto e conferisce carattere e pregevolezza l'anta della colonna in vetro bronzato con cornice titanio.

A pleasant and lively atmosphere reigns in this space, where materials, spaces and volumes harmoniously combine. The open shelving, the closed columns and the containers shape a comfortable and functional interior. The bronzed glass column door with titanium frame lightens the whole and adds character and preciousness.

**TAB
LET.**

08

NECK

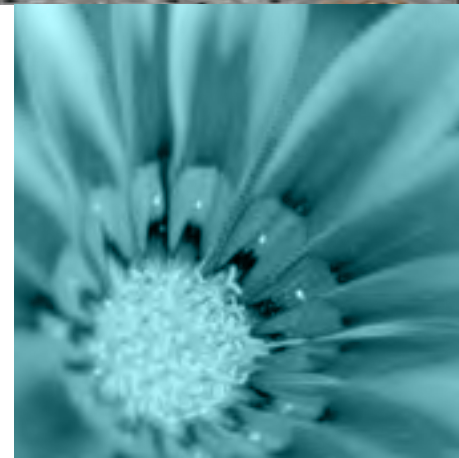


MOMENTI DI RELAX

Basi e colonne melaminico frassino sabbia, pensili porcellana soft matt, gola e zoccolo giallo ambra opaco e top marmo brown. Elementi a giorno in finitura giallo ambra opaco.

RELAXING MOMENTS

Sand-coloured melamine ash bases and columns, soft matt porcelain cabinets, amber-coloured groove handle and plinth and brown marble top. Open shelving in matt amber-coloured finish.



TAB
LET



TAB
LET.



Una cucina solare. Spazi ampi e pratici, dati dall'utilizzo di piani di lavoro che donano un tocco di comoda piacevolezza. Il living si inserisce perfettamente nel contesto.

A sunny kitchen. Wide and functional spaces resulting from the use of worktops which offer a touch of comfortable pleasantness. The living fits perfectly into the context.



**TAB
LET.**

09

NECK

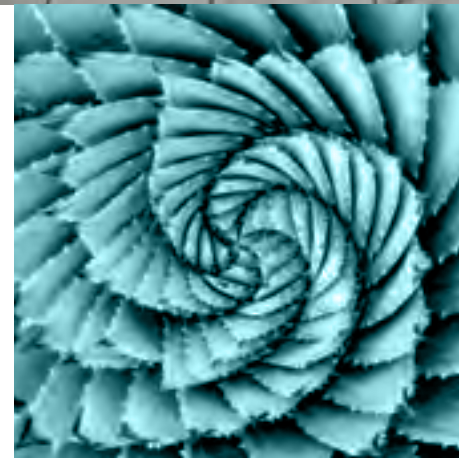


CARATTERE AVVOLGENTE

Basi, colonne e pensili melaminico noce brown, top bianco zeus extreme suede. Elemento a giorno e "modular" finitura titanio. Gola e zoccolo finitura titanio.

ENVELOPING CHARACTER

Brown melamine walnut bases, columns and cabinets, white zeus extreme suede top. Open shelving and "modular" with titanium finish. Groove handle and plinth with titanium finish.



**TAB
LET.**



TAB
LET.



Tradizione e innovazione si fondono perfettamente in questa cucina dal carattere forte e deciso. Un ambiente concreto e confortevole, la cui praticità è accentuata dalla sapiente distribuzione degli spazi. L'apertura al living crea una spazialità al tempo stesso distesa e avvolgente.

Tradition and innovation blend in seamlessly in this kitchen with a great personality. A practical and comfortable space, where functionality is enhanced by the smart distribution of spaces. The opening onto the living creates a relaxed and enveloping interior.



10

BRIDGE

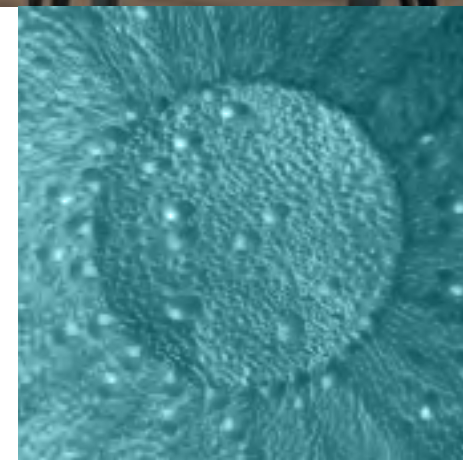


MODERNA CONVIVIALITÀ

Basi e colonne melaminico frassino lava, pensili finitura cemento ardesia e top grigio ardesia. Elemento a giorno "modular" finitura brill.

MODERN CONVIVIALITY

Lava melamine ash bases and columns, cabinets with slate finish and slate grey top. "Modular" open shelving with polish finish.



TAB
LET



TAB
LET



Toni di grigio per un'atmosfera elegante. Una composizione dalle linee moderne degli elementi a giorno. Aperta sul living per un ambiente separato, ma complementare.

Grey shades for a sophisticated atmosphere. A composition featuring the modern lines of open units. Open onto the living for a separate, but complementary place.

11

BRIDGE

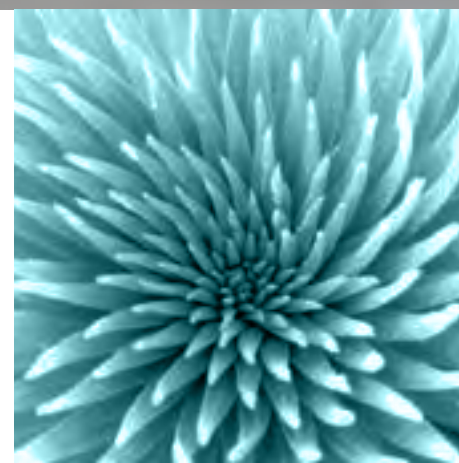


ARMONIA DI ELEMENTI

Basi melaminico frassino pietra, colonna e isola finitura malta bronzo. Top malta visone. Elementi a giorno laccato terra di Siena. Pensili frassino pietra con anta in vetro bronzato e cornice titanio.

HARMONY OF ELEMENTS

Stone melamine ash bases, columns and island with bronze mortar finish. Mink mortar top. Sienna lacquered open shelving. Stone ash cabinets with front in bronzed glass and titanium frame.



**TAB
LET**



TAB
LET



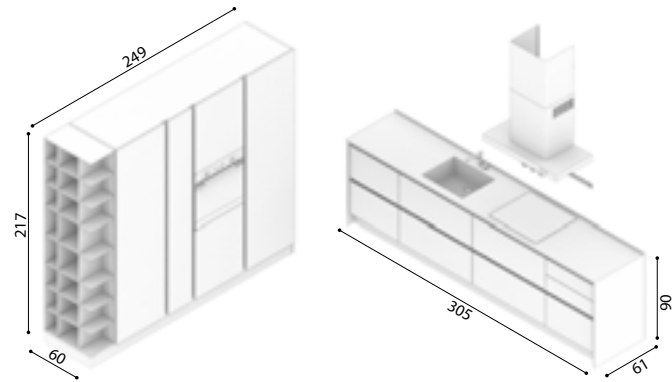
Un'armonia di materiali e volumi, dalla matericità della malta bronzo alla leggerezza del vetro in nuance. Le basi sospese e le ante in vetro danno respiro ad una composizione compatta e funzionale. L'equilibrio tra praticità ed estetica.

A seamless harmony of materials and volumes, from the texture of bronze mortar to the lightness of coordinated glass. The suspended bases and the glass cabinet fronts makes the composition coherent and functional. The balance between practicality and aesthetic appeal.



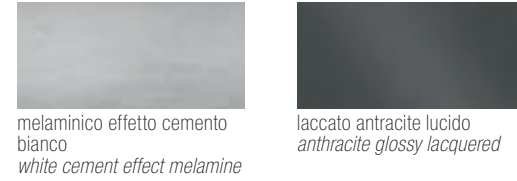
**TAB
LET.**

01
NECK
p.06



gola finitura brill
brill finish groove handle

FINITURE E COLORI ANTE - DOORS COLOURS AND FINISHES



melaminico effetto cemento bianco
white cement effect melamine

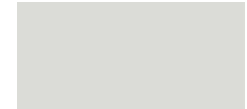
laccato antracite lucido
anthracite glossy lacquered

FINITURE E COLORI TOP - TOP COLOURS AND FINISHES



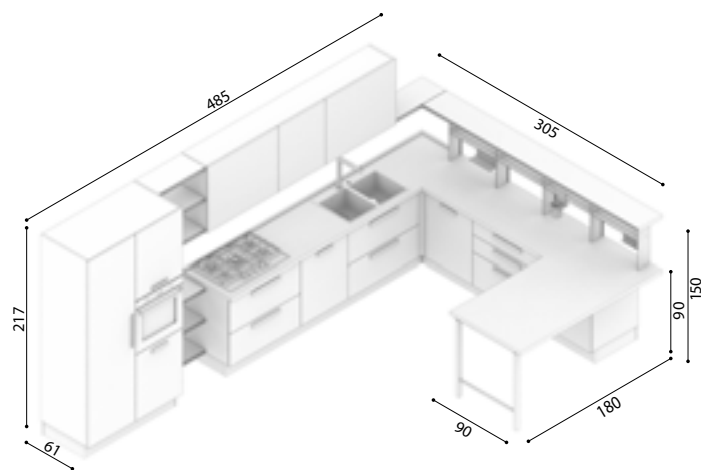
silestone kensho suede opaco
matt suede kensho silestone

COLORI ELEMENTI A GIORNO - OPEN UNITS COLOURS



laccato cenere
ash lacquered

02
BRIDGE
p.12



maniglia in multistrato marino finitura bianco opaco
matt white finish marine plywood handle

FINITURE E COLORI ANTE - DOORS COLOURS AND FINISHES



melaminico bianco opaco con bordo in simil multistrato
matt white melamine with plywood-like edge

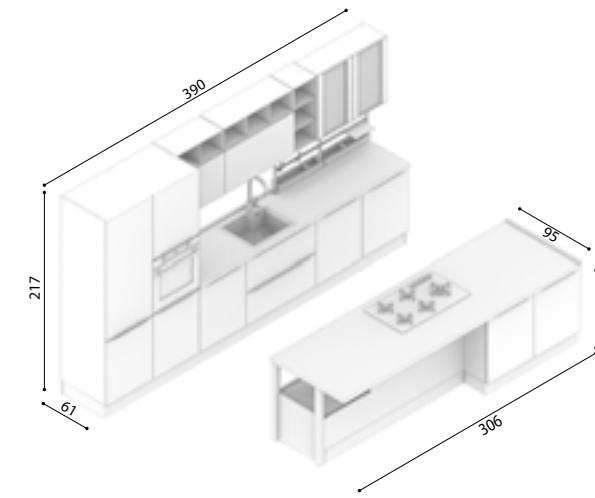
laccato bianco lucido
glossy white lacquered

FINITURE E COLORI TOP - TOP COLOURS AND FINISHES



laminato ABS1 acciottolato plamky
laminato ABS1 worktop stoney with plamky finish

03
HEAD
p.18



maniglia 920T finitura titanio
handle 920T titanium finish

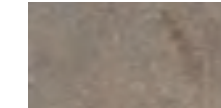
FINITURE E COLORI ANTE - DOORS COLOURS AND FINISHES



melaminico rovere dark
dark oak melamine

melaminico porcellana soft matt
soft matt porcelain melamine

FINITURE E COLORI TOP - TOP COLOURS AND FINISHES



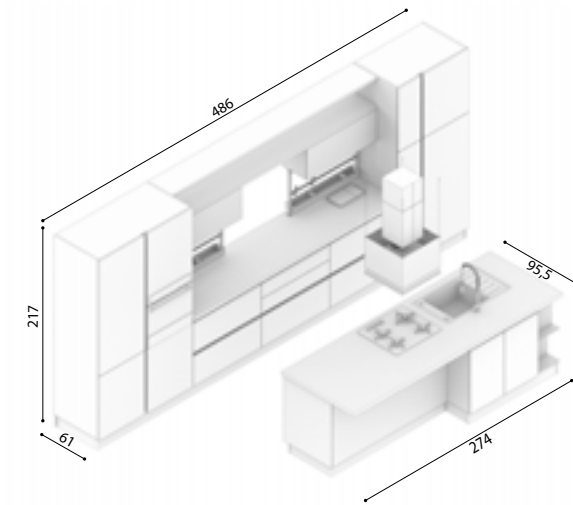
laminato ABS1 esterel wraky
laminato ABS1 worktop esterel with wraky finish

COLORI ELEMENTI A GIORNO - OPEN UNITS COLOURS



verde lichene opaco
lichen green matt

04
NECK
p.24



gola finitura brill
brill finish groove handle

FINITURE E COLORI ANTE - DOORS COLOURS AND FINISHES



melaminico finitura molara
molara finish melamine

melaminico rovere venere
venus oak melamine

FINITURE E COLORI TOP - TOP COLOURS AND FINISHES



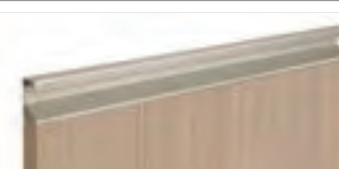
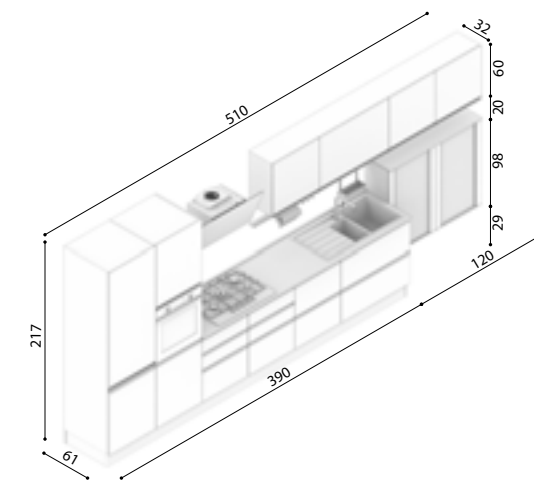
laminato ABS1 acciottolato plamky
laminato ABS1 worktop stoney with plamky finish

COLORI ELEMENTI A GIORNO - OPEN UNITS COLOURS



verde positano
positano green

05
HEAD
p.30



maniglia 910T finitura titanio
handle 910T titanium finish

FINITURE E COLORI ANTE - DOORS COLOURS AND FINISHES



melaminico rovere luna
moon oak melamine

melaminico desert soft matt
soft matt desert melamine

FINITURE E COLORI TOP - TOP COLOURS AND FINISHES



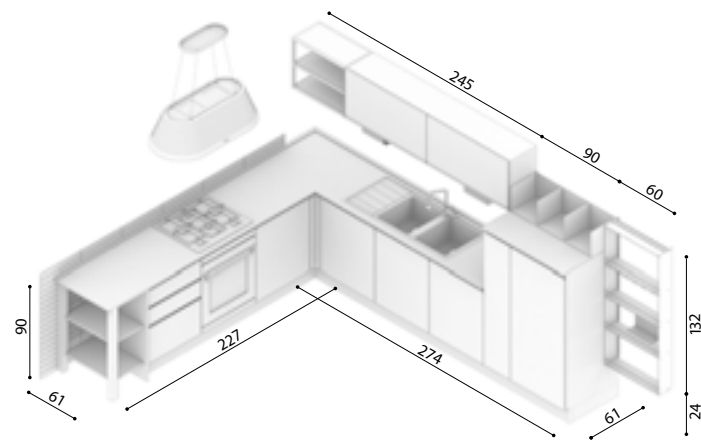
fenix bronzo doha
doha bronze fenix

BASI SOSPESA - SUSPENDED BASE



vetro flutes, rovere luna con traversa desert
fluted glass, moon oak with desert crossbar

06
HEAD
p.36



maniglia 913T finitura titanio
handle 913T titanium finish

FINITURE E COLORI ANTE - DOORS COLOURS AND FINISHES



melaminico molara soft matt
matt soft molara melamine



melaminico arena soft matt
matt soft arena melamine

FINITURE E COLORI TOP - TOP COLOURS AND FINISHES



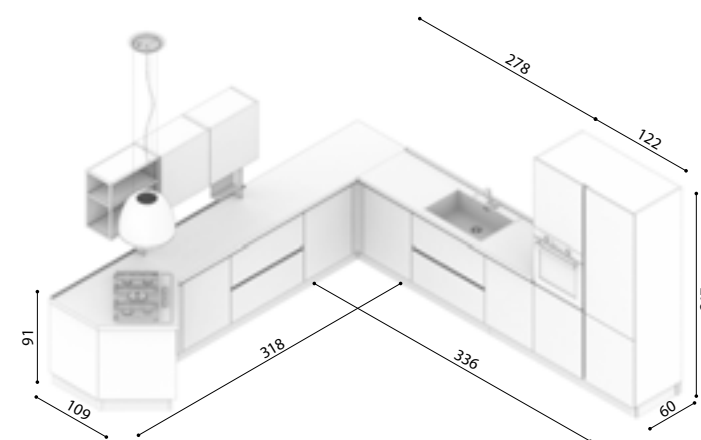
laminato ABS1 bardiglio grigio plamky
grey bardiglio with plamky finish

COLORI ELEMENTI A GIORNO - OPEN UNITS COLOURS



grigio Kenia
Kenya grey

09
NECK
p.54



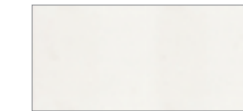
gola finitura titanio
titanium finish groove handle

FINITURE E COLORI ANTE - DOORS COLOURS AND FINISHES



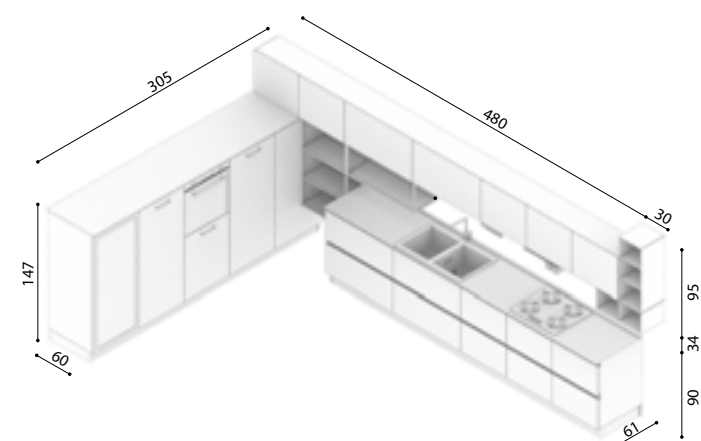
melaminico noce brown
brown walnut melamine

FINITURE E COLORI TOP - TOP COLOURS AND FINISHES



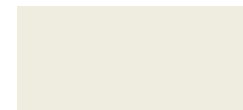
bianco zeus extreme suede
white zeus extreme suede

07
NECK
BRIDGE
p.42



maniglia K56 finitura satinato opaco
+gola finitura titanio
matt satin finish K56
handle+titanium finish
groove handle

FINITURE E COLORI ANTE - DOORS COLOURS AND FINISHES



melaminico porcellana soft matt
soft matt porcelain melamine



melaminico rovere arizona
arizona oak melamine

FINITURE E COLORI TOP - TOP COLOURS AND FINISHES



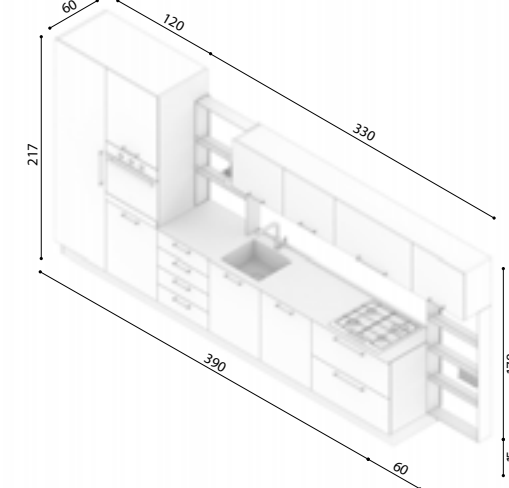
laminato ABS1 casablanca finitura touch
touch finish casablanca ABS1 laminate

COLORI ELEMENTI A GIORNO - OPEN UNITS COLOURS



verde positano
positano green

10
BRIDGE
p.60



maniglia K58 finitura nero opaco
handle K58 matt black finish

FINITURE E COLORI ANTE - DOORS COLOURS AND FINISHES



melaminico frassino lava
lava ash melamine



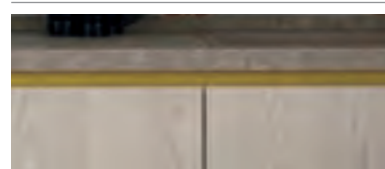
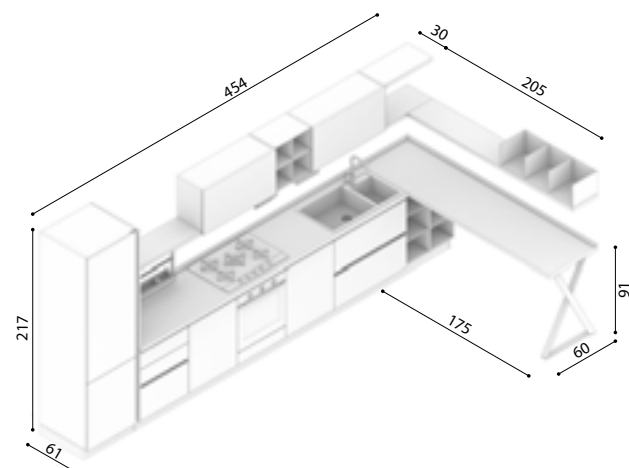
melaminico finitura cemento
ardesia
slate cement finish melamine

FINITURE E COLORI TOP - TOP COLOURS AND FINISHES



stratificato HPL grigio ardesia polaris
layered HPL worktop matt slategrey with polaris finish

08
NECK
p.48

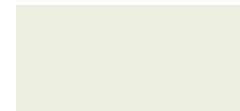


gola giallo ambra
amber yellow neck

FINITURE E COLORI ANTE - DOORS COLOURS AND FINISHES



melaminico frassino sabbia
sand ash melamine



melaminico porcellana soft matt
soft matt porcelain melamine

FINITURE E COLORI TOP - TOP COLOURS AND FINISHES



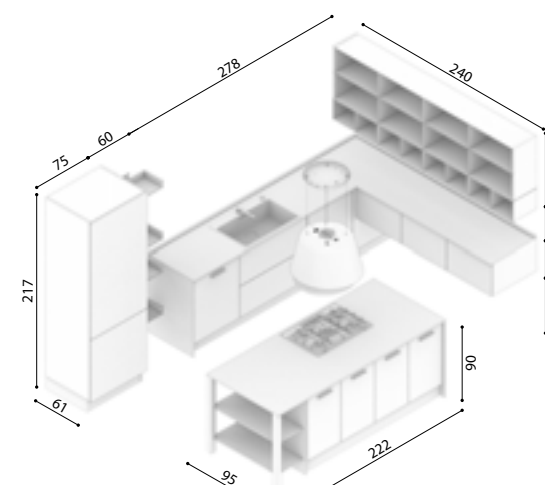
laminato ABS1 marmo brown plamky
laminate ABS1 worktop fake brown marble with plamky finish

COLORI ELEMENTI A GIORNO - OPEN UNITS COLOURS



giallo ambra opaco
amber yellow

11
BRIDGE
p.66

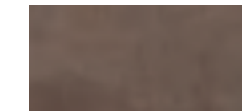


maniglia K57 finitura verniciato brunito
handle K57 with burnished painted finish

FINITURE E COLORI ANTE - DOORS COLOURS AND FINISHES



melaminico frassino pietra
stone ash melamine



melaminico finitura cemento
bronzo
bronze cement finish
melamine

FINITURE E COLORI TOP - TOP COLOURS AND FINISHES



laminato ABS1 malta visone plamky
laminate ABS1 worktop vintage mink mortar with plamky finish

COLORI ELEMENTI A GIORNO - OPEN UNITS COLOURS



terra di siena
siena earth

FINITURE E COLORI COLOURS AND FINISHES

TAB LET

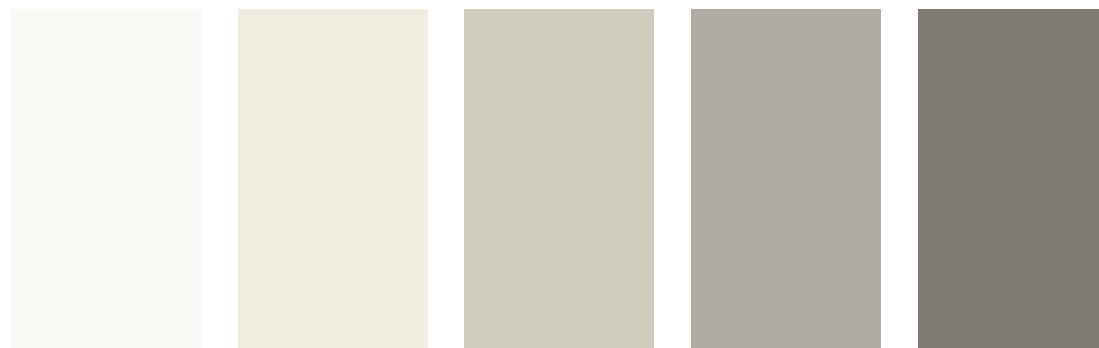
ANTE - DOORS

FINITURA EFFETTO LEGNO VENATURA VERTICALE BORDATA IN TINTA COLORE
WOOD EFFECT FINISH WITH VERTICAL GRAIN AND EDGES IN MATCHING COLOUR



rovere luna moon oak rovere venere venus oak rovere arizona arizona oak rovere dark dark oak frassino lava lava ash frassino sabbia sand ash frassino pietra stone ash

FINITURA SUPER OPACA TINTA UNITA CON RETRO IN TINTA, BORDATA A COLORE IN TINTA COLORE O CON BORDO MULTISTRATO
SOLID COLOUR SUPER MATT FINISH WITH MATCHING REAR, AND WITH EDGES IN MATCHING COLOUR OR PLY EDGES



bianco soft matt soft matt white porcellana soft matt soft matt porcelain desert soft matt soft matt desert molara soft matt soft matt molara arena soft matt soft matt arena

FINITURA CEMENTO OPACO BORDATA IN TINTA COLORE
MATT CEMENT FINISH WITH EDGES IN MATCHING COLOUR



bianco white bronzo bronze ardesia slate grey

FINITURA EFFETTO LEGNO SEMILUCIDO FIAMMA VERTICALE BORDATA IN TINTA COLORE
SEMI-POLISHED WOOD EFFECT FINISH WITH VERTICAL GRAIN AND EDGES IN MATCHING COLOUR



noce brown brown walnut

ANTA SP:18 MM MDF BORDATA ABS LUCIDO INTERNO A COLORE OPACO ED ESTERNO LACCATO LUCIDO UV
18MM THICK DOOR IN MDF EDGED WITH GLOSS ABS WITH MATT COLOUR INTERIOR AND GLOSS UV LACQUER EXTERIOR



bianco white desert desert antracite anthracite

ANTA VETRO SATINATO CON TELAIO IN ALLUMINIO BRILL SP:18 MM
FROSTED GLASS DOOR WITH FRAME IN BRILL FINISH ALUMINIUM 18MM THICK



ANTA VETRO BRONZATO CON TELAIO IN ALLUMINIO TITANIO SP:18 MM
BRONZED GLASS DOOR WITH FRAME IN TITANIUM FINISH ALUMINIUM 18MM THICK



ANTA VETRO CON MONTANTI IN MELAMINICO EFFETTO LEGNO E TRAVERSI IN ALLUMINIO IN TINTA UNITA SP:18 MM
GLASS DOOR WITH WOOD-EFFECT MELAMINE UPRIGHTS AND CROSSBARS IN SOLID-COLOUR ALUMINIUM 18MM THICK



rovere luna con traversa desert moon oak with desert crossbar rovere venere con traversa molara venus oak with molara crossbar rovere arizona con traversa arena arizona oak with arena crossbar rovere dark con traversa porcellana dark oak with porcelain crossbar frassino lava con traversa arena lava ash with arena crossbar frassino sabbia con traversa porcellana sand ash with porcelain crossbar frassino pietra con traversa desert stone ash with desert crossbar

MANIGLIE - HANDLES

DI SERIE STANDARD - STANDARD



maniglia F547 finitura nichel satinato
handle F547 with satin nickel finish

A RICHIESTA - ON REQUEST



maniglia K50 finitura cromo
handle K50 chrome finish



pomo 244P finitura cromo
knob 244P chrome finish



maniglia K56 finitura satinato opaco
handle K56 matt satin finish



maniglia K57 finitura verniciato brunito
handle K57 with burnished painted finish



maniglia K58 finitura nero opaco
handle K58 matt black finish



maniglia in multistrato marino
handle in marine ply

MANIGLIE - HANDLES

DI SERIE STANDARD - STANDARD



maniglia 910T finitura titanio
handle 910T titanium finish



maniglia 910B finitura brill
handle 910B brill finish

A RICHIESTA - ON REQUEST



maniglia 913T finitura titanio
handle 913T titanium finish



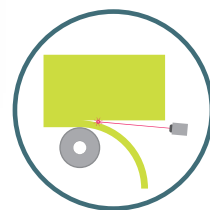
maniglia 913B finitura brill
handle 913B brill finish



maniglia 920T finitura titanio
handle 920T titanium finish



ante bordate con tecnologia laser
laser-edged cabinet fronts



madia Mixo
Mixo cupboard



bordo in simil multistrato
edge in plywood-like material

maniglia coordinata all'anta tinta unita con supporto in vero multistrato.
handle matching the solid-coloured cabinet front with support in real plywood



sottopensile "Grid"
Grid under-the-wall unit



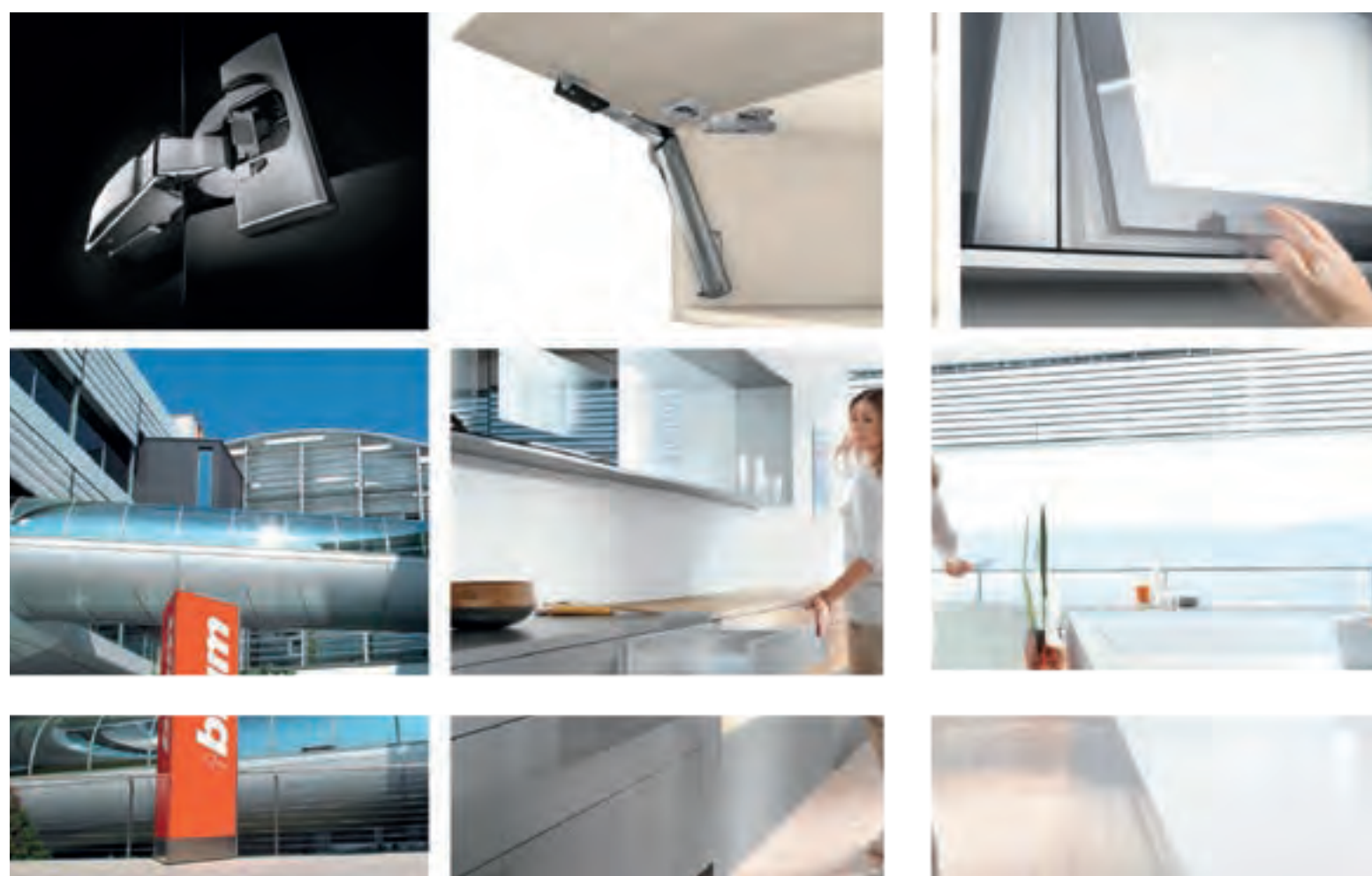
libreria Totem
Totem bookcase

AVANGUARDIA TECNOLOGICA CUTTING-EDGE TECHNOLOGY

TAB LET.

La Ditta BLUM fornisce eccellenti sistemi estraibili e di ammortizzamento dei cassetti e delle ante, inseriti di serie in tutti i modelli Creo Kitchens. In Blum tutto gira intorno al movimento, l'obiettivo è la soddisfazione duratura dei clienti CREO Kitchens, con prodotti che convincono per il funzionamento impeccabile, l'apprezzato design e la lunga durata, standard qualitativi applicati anche ai servizi.

BLUM provides excellent pull-out and soft-closing door and drawer systems. These are fitted as standard on all Creo Kitchens models. At Blum everything revolves around movement, the aim is to provide CREO Kitchens customers with long-lasting satisfaction. This is achieved through products with impeccable functionality, good design and long life, quality standards that are also applied to our services.



I campioni e i colori riprodotti sono puramente indicativi, la rappresentazione in stampa può alterare la tonalità dei colori, le misure sono di massima, per qualsiasi riferimento vedi listino prezzi.

The samples and colours reproduced here are purely indicative as their representation in print can change the shades of the colours. Measurements are approximate, see the price list for all references.

Lube Industries srl è dotata di Sistemi di Gestione per la Qualità e la Salute e Sicurezza, in conformità alle norme UNI EN ISO 9001, e BS OHSAS 18001. Visita il nostro sito www.creokitchens.it per maggiori informazioni.

Lube Industries srl is equipped with Quality, Health and Safety Management Systems, in compliance with international standards UNI EN ISO 9001, and BS OHSAS 18001. Visit our website www.creokitchens.it for further information.