



Opportunity Zones

Collier County's Qualified Opportunity Zones

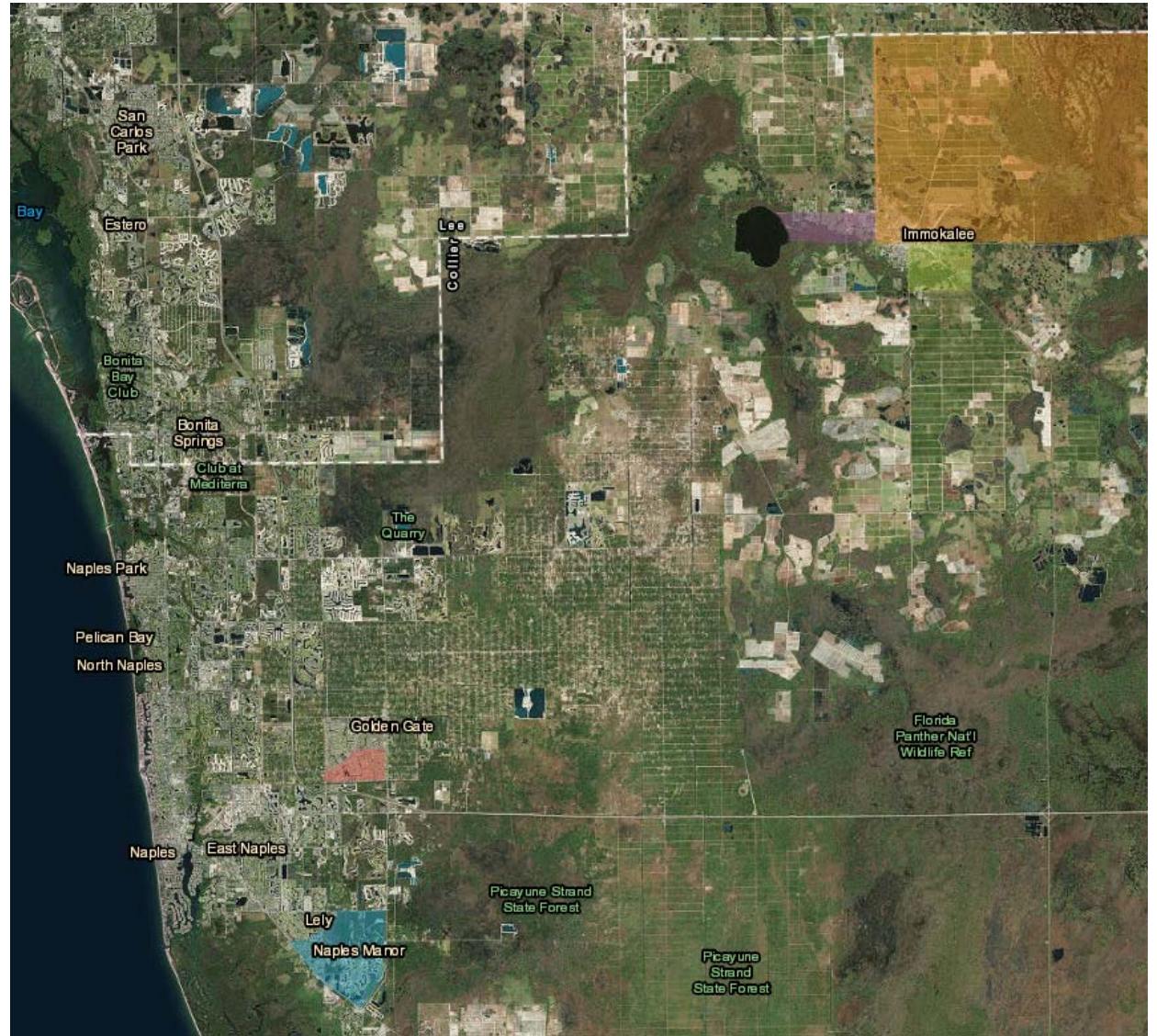
Office of Business & Economic Development
June 24, 2019

**For More Information
Contact Collier County EDO
239-403-2914**

What's the goal of a Qualified Opportunity Zone?

- Qualified Opportunity Zones (QOZs) are an important tool to support the development of jobs, affordable housing and economic vitality in five Collier County Census Tracts in:
 - Golden Gate
 - Naples Manor
 - Immokalee Regional Airport and two around Immokalee

Collier County Qualified Opportunity Zones

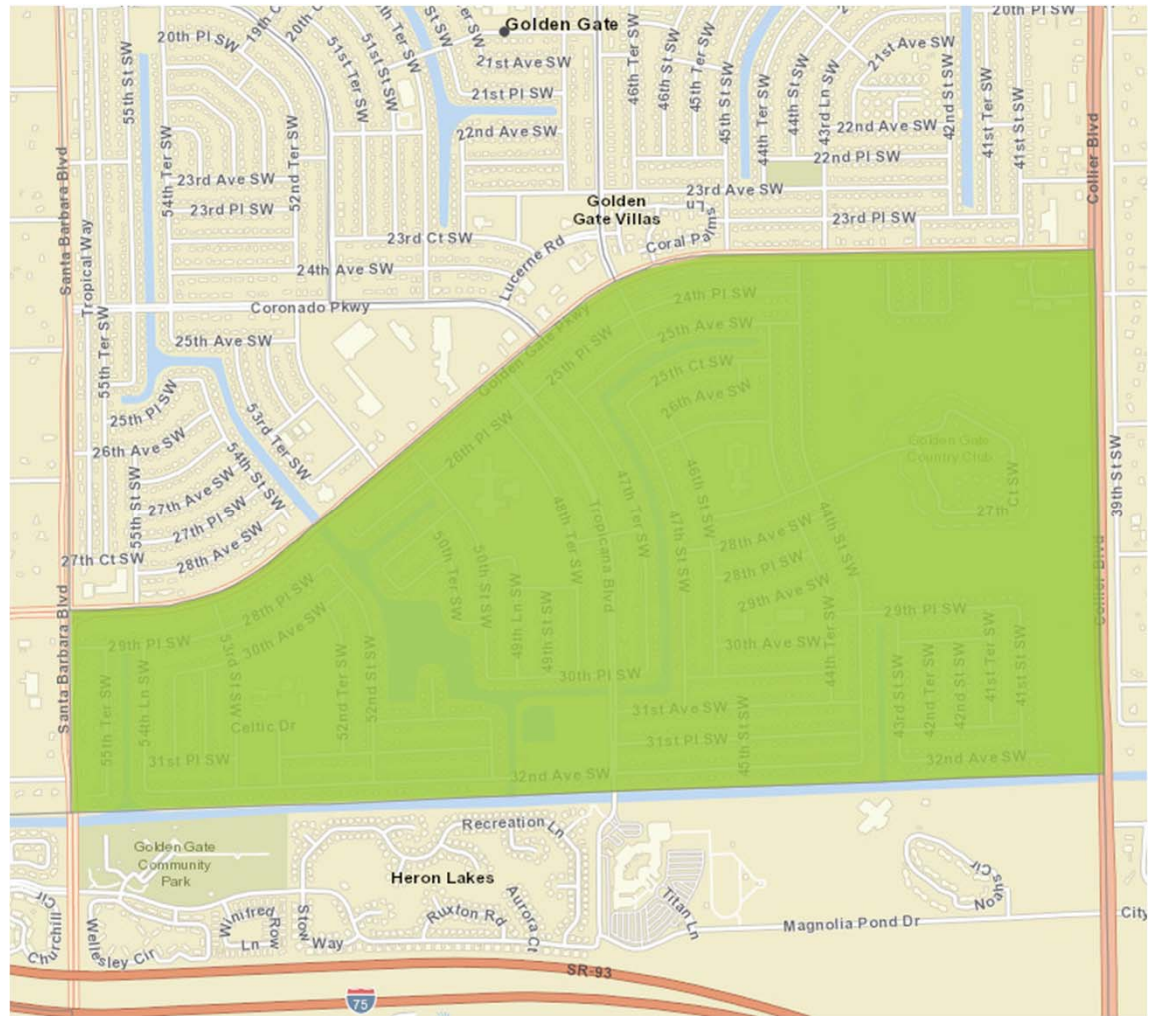


Overview of Collier County QOZ Census Tracts

| Census Tract | Population | Households | Median Household Income | Population Growth (08/12) |
|----------------------------------|---------------|--------------|-------------------------|---------------------------|
| Golden Gate (104.11) | 8,250 | 2,188 | \$42,685 | 20.3% |
| Naples Manor (108.02) | 5,335 | 2,514 | \$54,542 | 9.5% |
| Immokalee Seminole (112.05) | 2,778 | 676 | \$22,337 | 13.5% |
| Immokalee Lake Trafford (113.01) | 4,768 | 1,012 | \$30,508 | 28.7% |
| Immokalee Reg'l Airport (114) | 5,310 | 916 | \$46,711 | 24.4% |
| Total | 26,441 | 7,306 | \$39,356.60 | 19.28% |

Source: U.S. Census American Community Survey

Golden Gate Opportunity Zone



Source: ESRI ArcGIS Online

Golden Gate QOZ: Residents & Community

Population

| | Census Tract 104.11, Collier County, Florida | Collier County, Florida | Florida | United States |
|-----------------------------|---|----------------------------|--------------|------------------|
| Total Population | 8,250 | 356,774 | 20,278,447 | 321,004,407 |
| | 20.3%↑ | 10.3%↑ | 7.4%↑ | 3.8%↑ |
| Total Population: Male | 3,729 | 175,608 | 9,914,361 | 158,018,753 |
| | 45.2% | 49.2% | 48.9% | 49.2% |
| | 15.6%↑ | 9.9%↑ | 7.4%↑ | 3.9%↑ |
| Total Population: Female | 4,521 | 181,166 | 10,364,086 | 162,985,654 |
| | 54.8% | 50.8% | 51.1% | 50.8% |
| | 24.5%↑ | 10.6%↑ | 7.4%↑ | 3.7%↑ |

Source: U.S. Census American Community Survey

Golden Gate QOZ: Education and Workforce Preparedness

Educational Attainment

| | Census Tract 104.11, Collier County, Florida | Collier County, Florida | Florida | United States |
|---|---|------------------------------------|---------------------------------------|---------------------------------------|
| Total Population: 25 Years and over | 5,857 34.6% ↑ | 268,314 12.6% ↑ | 14,396,066 9.7% ↑ | 216,271,644 5.8% ↑ |
| High School & Higher | 4,220 72.1% 25.4% ↑ | 232,115 86.5% 14.5% ↑ | 12,608,718 87.6% 11.9% ↑ | 188,834,530 87.3% 7.8% ↑ |
| AS & Higher | 955 16.3% 17.0% ↑ | 114,566 42.7% 25.3% ↑ | 5,500,926 38.2% 20.1% ↑ | 84,805,084 39.2% 14.7% ↑ |
| High school diploma, GED or alternative credential | 2,416 41.2% 49.2% ↑ | 70,815 26.4% 9.7% ↑ | 4,170,468 29.0% 6.5% ↑ | 59,093,612 27.3% 2.4% ↑ |
| Some college Experience | 849 14.5% -8.8% ↓ | 46,734 17.4% 0.1% ↑ | 2,937,324 20.4% 6.0% ↑ | 44,935,834 20.8% 3.3% ↑ |
| Associate's degree | 175 3.0% -35.2% ↓ | 20,836 7.8% 26.2% ↑ | 1,405,068 9.8% 22.8% ↑ | 17,917,481 8.3% 13.9% ↑ |
| Bachelor's degree | 556 9.5% 59.3% ↑ | 55,109 20.5% 18.3% ↑ | 2,616,384 18.2% 18.5% ↑ | 41,377,068 19.1% 13.3% ↑ |
| Master's degree | 124 2.1% -20.0% ↓ | 25,467 9.5% 43.6% ↑ | 1,021,907 7.1% 22.9% ↑ | 18,154,808 8.4% 19.5% ↑ |
| Professional school degree | 100 1.7% 334.8% ↑ | 8,859 3.3% 13.9% ↑ | 295,243 2.1% 13.8% ↑ | 4,393,328 2.0% 9.8% ↑ |
| Doctorate degree | | 4,295 1.6% 51.8% ↑ | 162,324 1.1% 18.8% ↑ | 2,962,399 1.4% 19.2% ↑ |

Source: U.S Census American Community Survey

INVENTORY SF
540 K **0%**
Prior Period 540 K

UNDER CONSTRUCTION SF
0 -
Prior Period 0

12 MO NET ABSORPTION SF
527 **-77.3%**
Prior Period 2.3 K

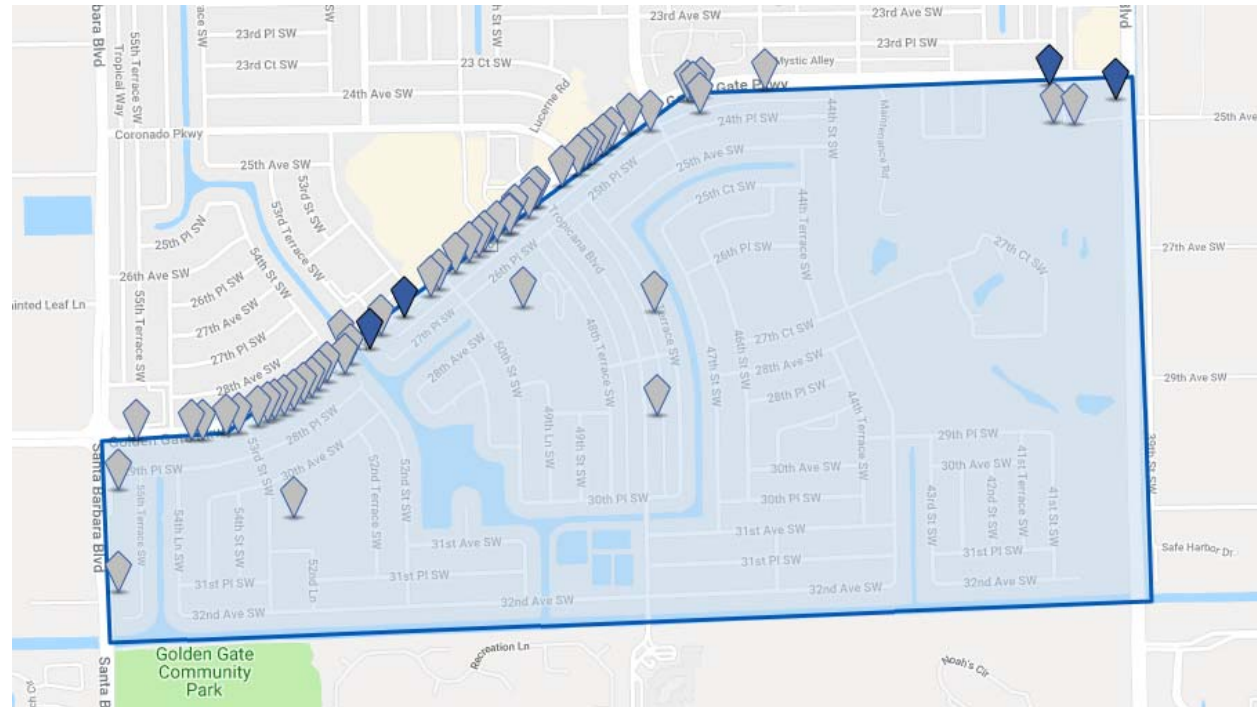
VACANCY RATE
10.9% **-0.5%**
Prior Period 11.4%

MARKET RENT/SF
\$18.84 **-1.7%**
Prior Period \$19.18

MARKET SALE PRICE/SF
\$234 **-0.1%**
Prior Period \$234

MARKET CAP RATE
6.5% **+0.1%**
Prior Period 6.4%

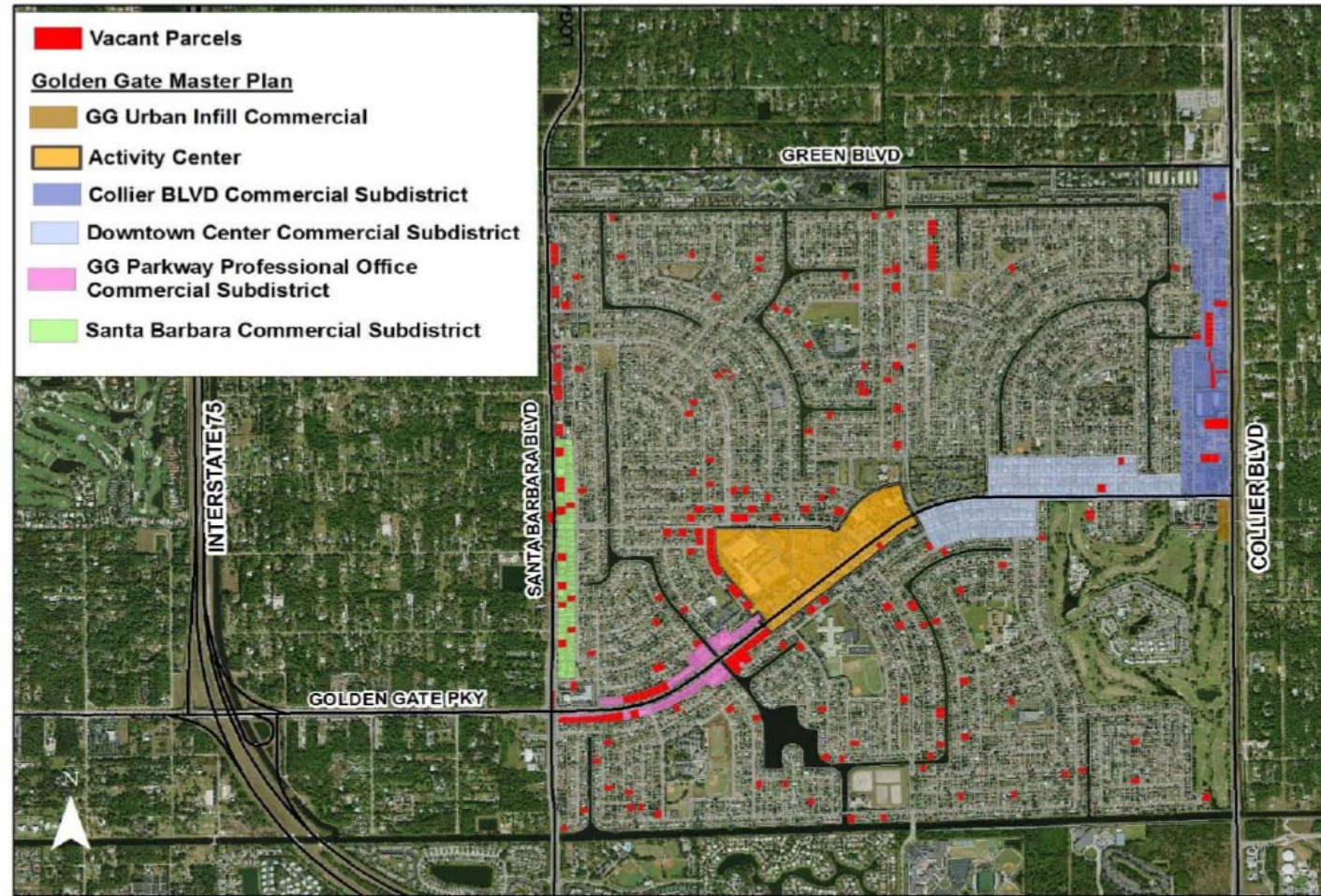
Golden Gate QOZ Properties



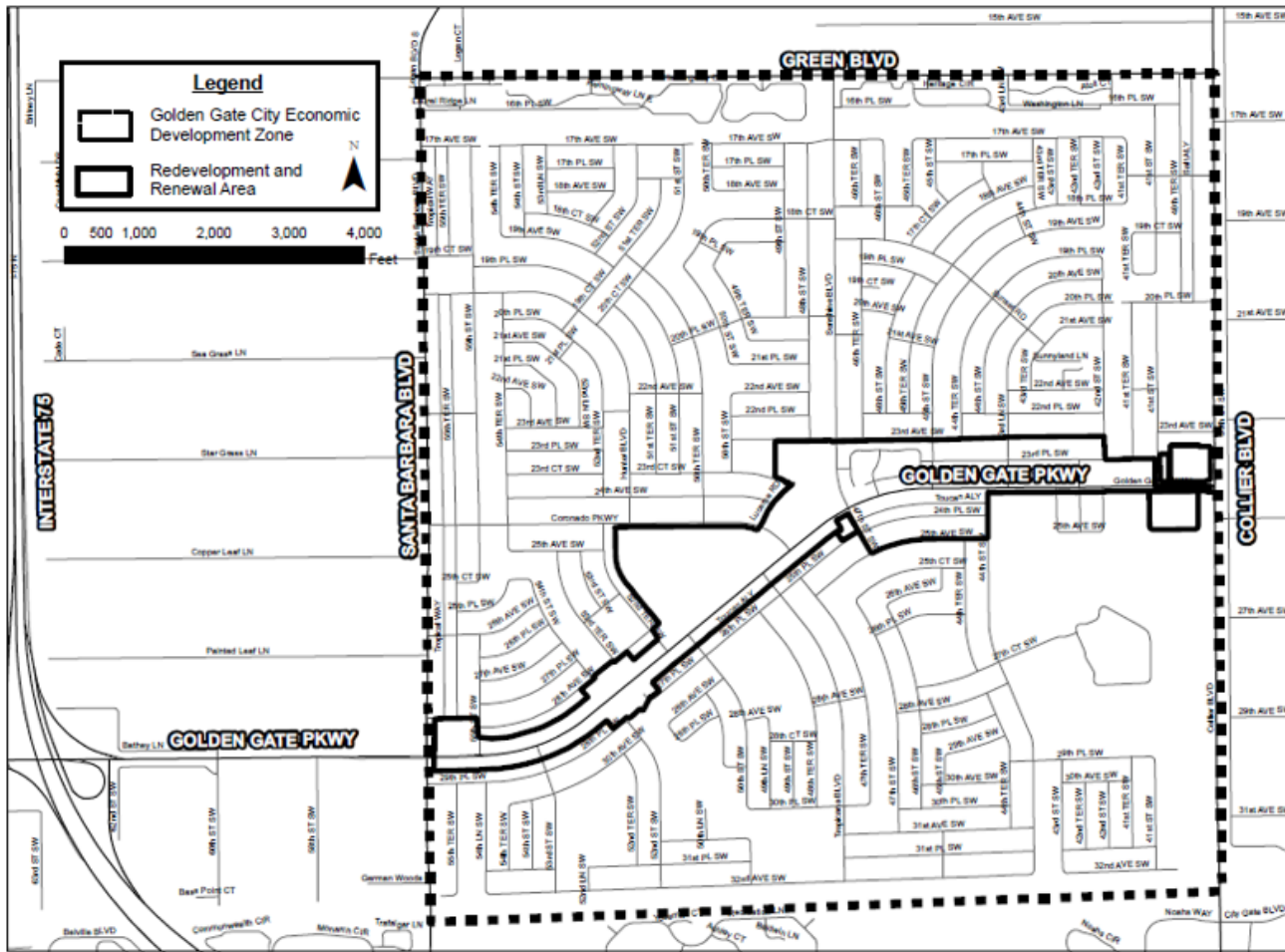
Source: Co-Star

Golden Gate QOZ: Development Indicators

GOLDEN GATE CITY AREA VACANT PARCELS



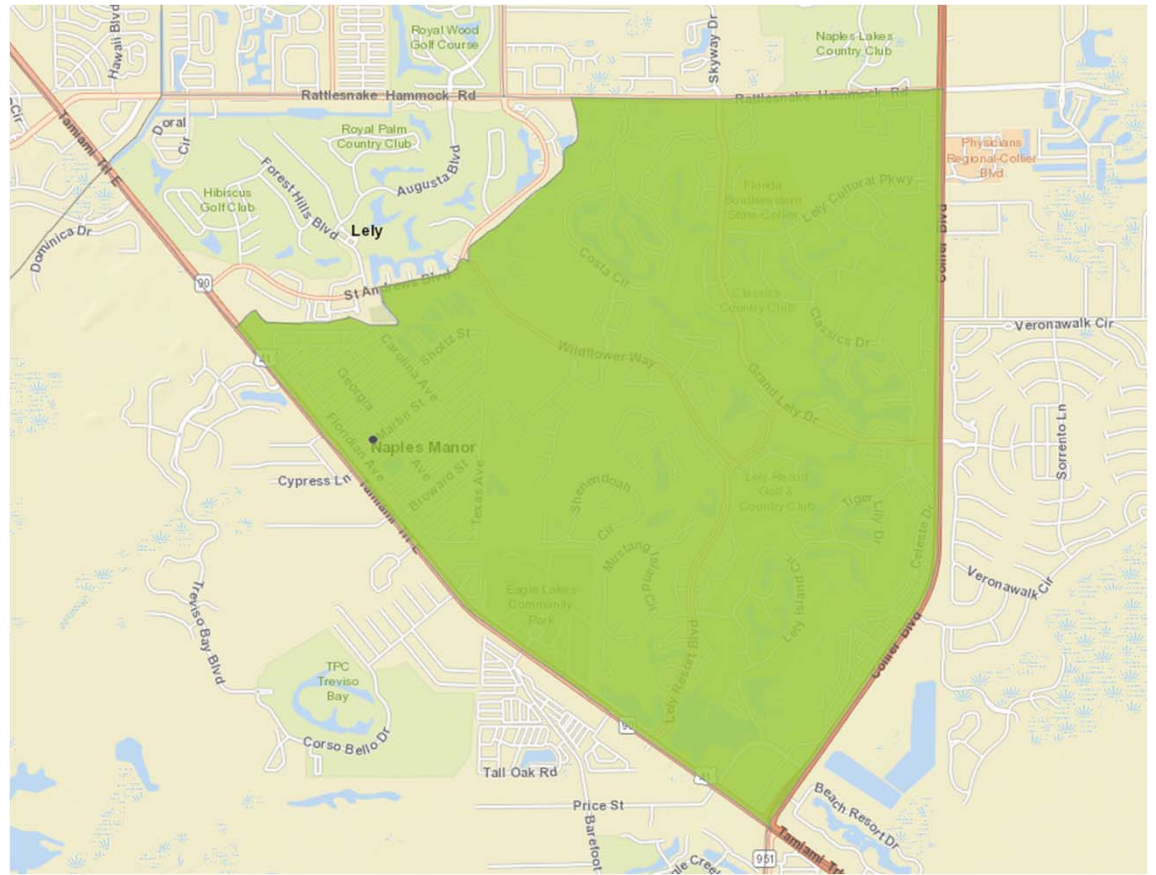
GOLDEN GATE CITY ECONOMIC DEVELOPMENT ZONE ORDINANCE MAP



Golden Gate
QOZ:
Development
Indicators

Source: Collier County official records.

Naples Manor QOZ



Source: ESRI ArcGIS Online

Naples Manor QOZ: Residents & Community

Population

| | Block Group 1, Census Tract 108.02, Collier County, Florida | Collier County, Florida | Florida | United States |
|-------------------|--|--------------------------------|----------------|----------------------|
| Total Population | 5,335 | 356,774 | 20,278,447 | 321,004,407 |
| | 9.5% ↑ | 10.3% ↑ | 7.4% ↑ | 3.8% ↑ |
| Total Population: | 2,438 | 175,608 | 9,914,361 | 158,018,753 |
| Male | 45.7% | 49.2% | 48.9% | 49.2% |
| | 3.8% ↑ | 9.9% ↑ | 7.4% ↑ | 3.9% ↑ |
| Total Population: | 2,897 | 181,166 | 10,364,086 | 162,985,654 |
| Female | 54.3% | 50.8% | 51.1% | 50.8% |
| | 14.7% ↑ | 10.6% ↑ | 7.4% ↑ | 3.7% ↑ |

Naples Manor QOZ: Education and Workforce Preparedness

Educational Attainment

| | Block Group 1, Census Tract 108.02, Collier County, Florida | Collier County, Florida | Florida | United States |
|---|--|----------------------------|---------------------|----------------------|
| Total Population: 25 Years and over | 4,377 | 268,314 | 14,396,066 | 216,271,644 |
| | 16.6% ↑ | 12.6% ↑ | 9.7% ↑ | 5.8% ↑ |
| High School & Higher | 3,830 87.5% | 232,115 86.5% | 12,608,718 87.6% | 188,834,530 87.3% |
| | 14.3% ↑ | 14.5% ↑ | 11.9% ↑ | 7.8% ↑ |
| AS & Higher | 1,981 45.3% | 114,566 42.7% | 5,500,926 38.2% | 84,805,084 39.2% |
| | 30.4% ↑ | 25.3% ↑ | 20.1% ↑ | 14.7% ↑ |
| High school diploma, GED or alternative credential | 1,030 23.5% | 70,815 26.4% | 4,170,468 29.0% | 59,093,612 27.3% |
| | 22.3% ↑ | 9.7% ↑ | 6.5% ↑ | 2.4% ↑ |
| Some college Experience | 819 18.7% | 46,734 17.4% | 2,937,324 20.4% | 44,935,834 20.8% |
| | -17.3% ↓ | 0.1% ↑ | 6.0% ↑ | 3.3% ↑ |
| Associate's degree | 207 4.7% | 20,836 7.8% | 1,405,068 9.8% | 17,917,481 8.3% |
| | 109.1% ↑ | 26.2% ↑ | 22.8% ↑ | 13.9% ↑ |
| Bachelor's degree | 911 20.8% | 55,109 20.5% | 2,616,384 18.2% | 41,377,068 19.1% |
| | -4.5% ↓ | 18.3% ↑ | 18.5% ↑ | 13.3% ↑ |
| Master's degree | 554 12.7% | 25,467 9.5% | 1,021,907 7.1% | 18,154,808 8.4% |
| | 113.1% ↑ | 43.6% ↑ | 22.9% ↑ | 19.5% ↑ |
| Professional school degree | 239 5.5% | 8,859 3.3% | 295,243 2.1% | 4,393,328 2.0% |
| | 48.4% ↑ | 13.9% ↑ | 13.8% ↑ | 9.8% ↑ |
| Doctorate degree | 70 1.6% | 4,295 1.6% | 162,324 1.1% | 2,962,399 1.4% |
| | 55.6% ↑ | 51.8% ↑ | 18.8% ↑ | 19.2% ↑ |

Naples Manor QOZ: Housing Market

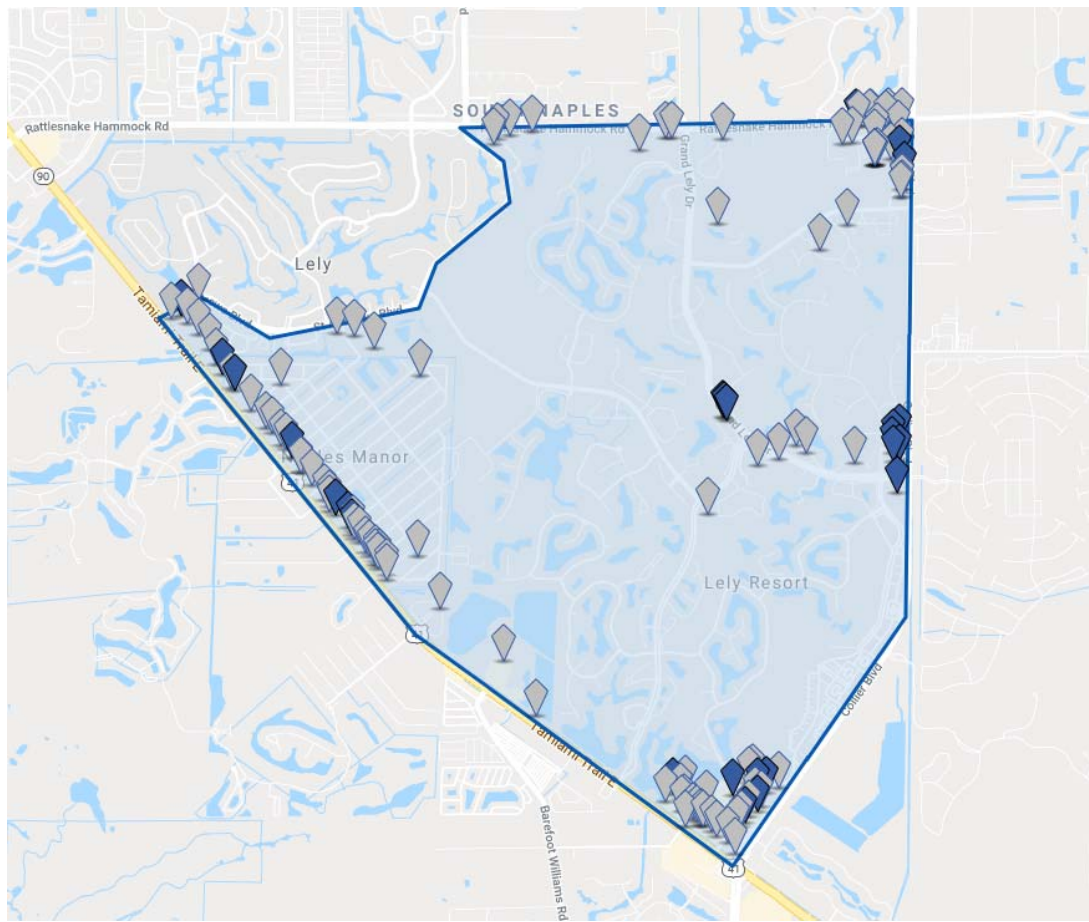
Many Opportunity Zones have experienced investment withdrawals in local housing stock. Such disinvested housing can present a need for higher quality housing for residents. Fortunately, lower home values may be an incentive for local or smaller developers, who might otherwise be priced out of the local housing market. (Growth rates are for between 2008 and 2012).

| Housing | | | | |
|---------------------|--|----------------------------|-----------------------------|------------------------------|
| | Block Group 1, Census Tract 108.02, Collier County, Florida | Collier County, Florida | Florida | United States |
| Total Housing Units | 5,003 30.4% | 207,403 5.0% | 9,259,684 3.1% | 135,393,564 2.8% |
| Occupied Units | 2,514 50.2% 39.0% | 138,131 66.6% 14.2% | 7,510,882 81.1% 5.1% | 118,825,921 87.8% 3.1% |
| Vacant Units | 2,489 49.8% 22.7% | 69,272 33.4% -9.6% | 1,748,802 18.9% -4.8% | 16,567,643 12.2% 0.9% |
| Owner occupied | 1,611 64.1% 46.2% | 99,624 72.1% 9.4% | 4,868,827 64.8% 0.1% | 75,833,135 63.8% 0.5% |
| Renter occupied | 903 35.9% 27.7% | 38,507 27.9% 29.0% | 2,642,055 35.2% 15.8% | 42,992,786 36.2% 8.2% |

Source: U.S. Census American Community Survey

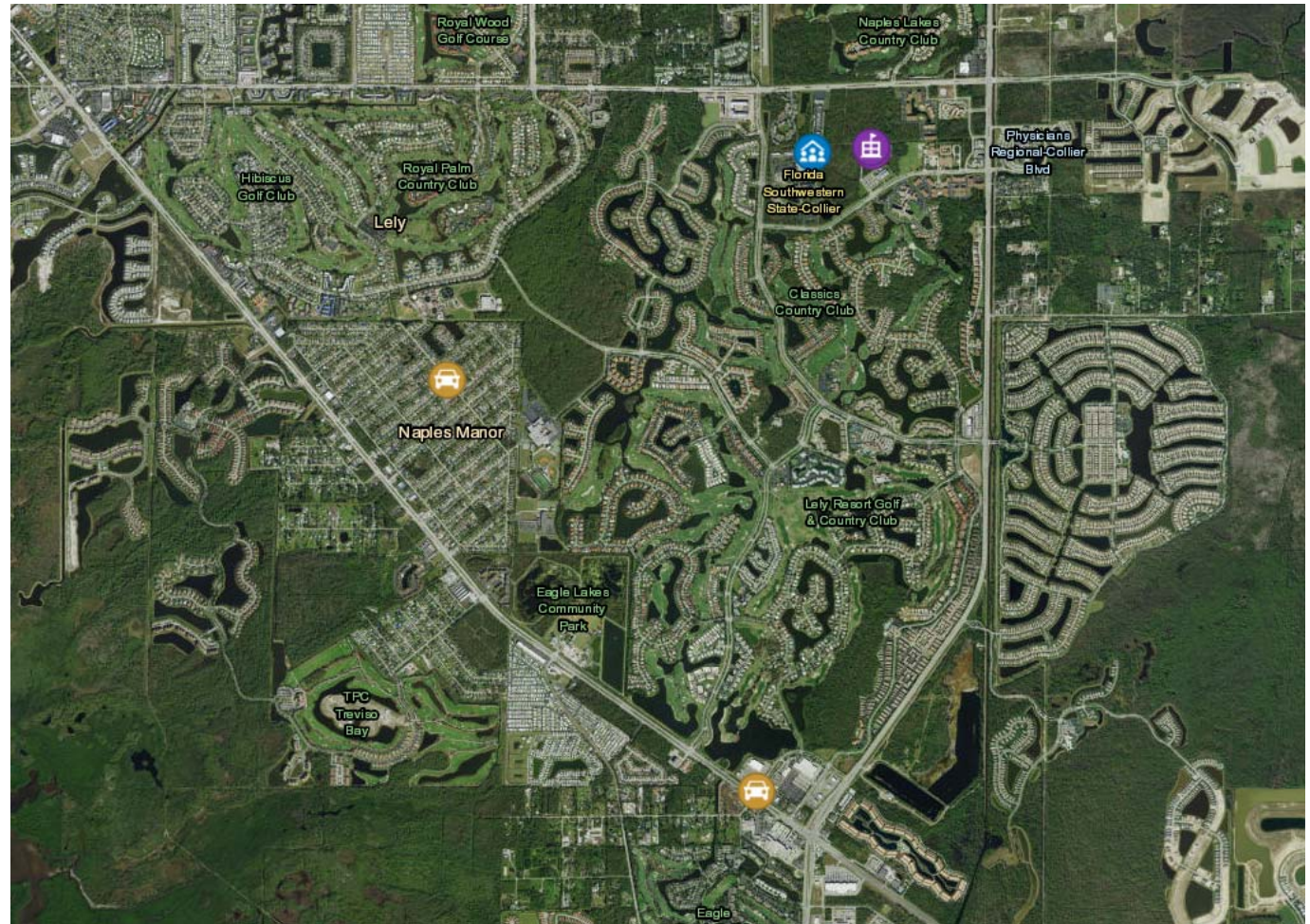
| | | | | | | |
|---|--|---|--|--|--|---|
| INVENTORY SF 3 M +12.4% Prior Period 2.6 M | UNDER CONSTRUCTION SF 149 K -59.9% Prior Period 373 K | 12 MO NET ABSORPTION SF 9.7 K -51.8% Prior Period 20 K | VACANCY RATE 24.5% +0.6% Prior Period 23.9% | MARKET RENT/SF \$22.76 +0.6% Prior Period \$22.62 | MARKET SALE PRICE/SF \$181 +4.6% Prior Period \$173 | MARKET CAP RATE 5.3% -0.1% Prior Period 5.4% |
|---|--|---|--|--|--|---|

Naples
Manor QOZ
Properties



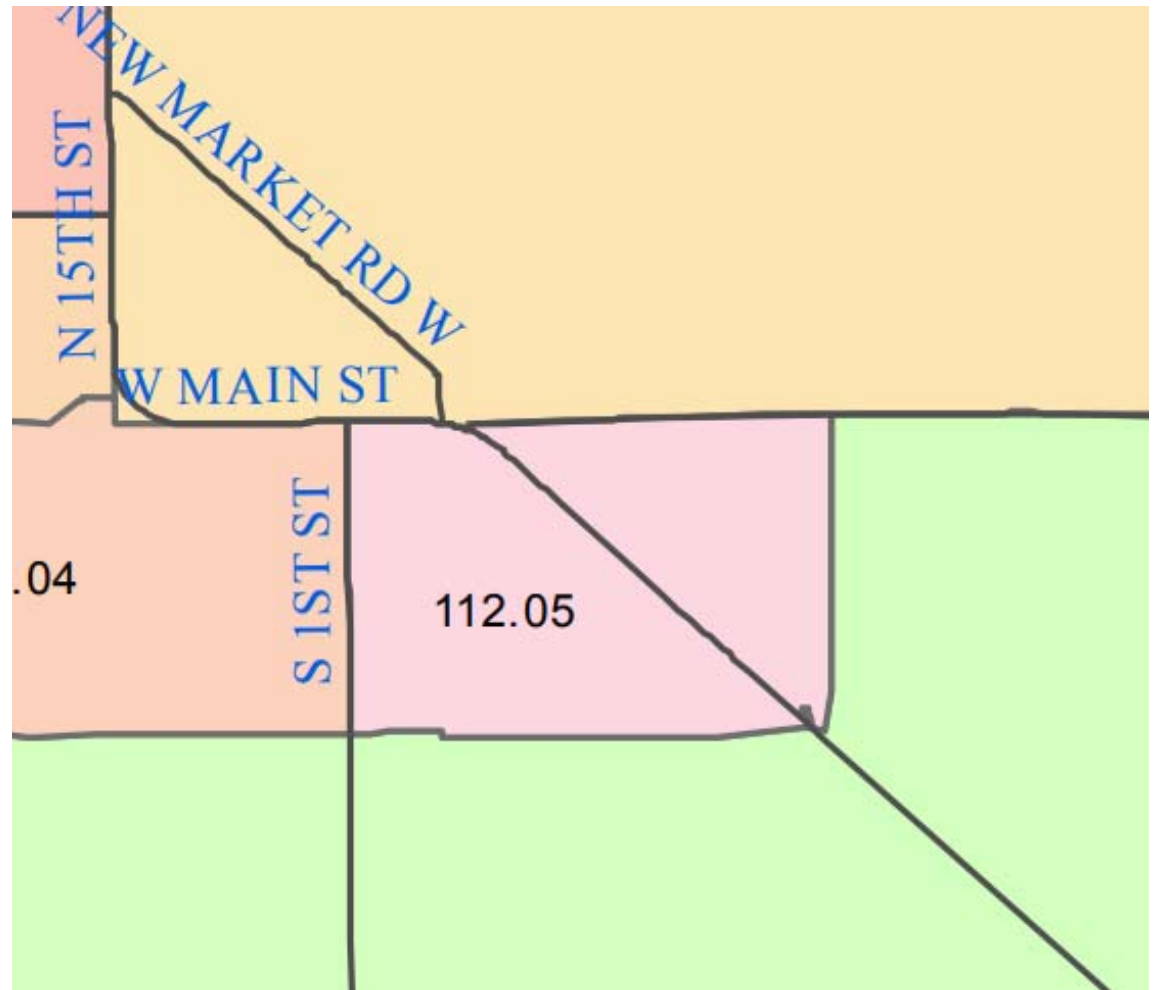
Source: Co-Star

Community Projects



Source: ESRI ArcGIS Online

Immokalee
QOZ:
Census Tract
112.05
(Seminole)



Immokalee QOZ 112.05: Residents & Community

Population

| | Census Tract 112.05, Collier County, Florida | Collier County, Florida | Florida | United States |
|-----------------------------|---|----------------------------|--------------|------------------|
| Total Population | 2,778 | 356,774 | 20,278,447 | 321,004,407 |
| | 13.5%↑ | 10.3%↑ | 7.4%↑ | 3.8%↑ |
| Total Population: Male | 1,425 | 175,608 | 9,914,361 | 158,018,753 |
| | 51.3% | 49.2% | 48.9% | 49.2% |
| | 0.8%↓ | 9.9%↑ | 7.4%↑ | 3.9%↑ |
| Total Population: Female | 1,353 | 181,166 | 10,364,086 | 162,985,654 |
| | 48.7% | 50.8% | 51.1% | 50.8% |
| | 30.7%↑ | 10.6%↑ | 7.4%↑ | 3.7%↑ |

Immokalee QOZ 112.05: Economic Indicators

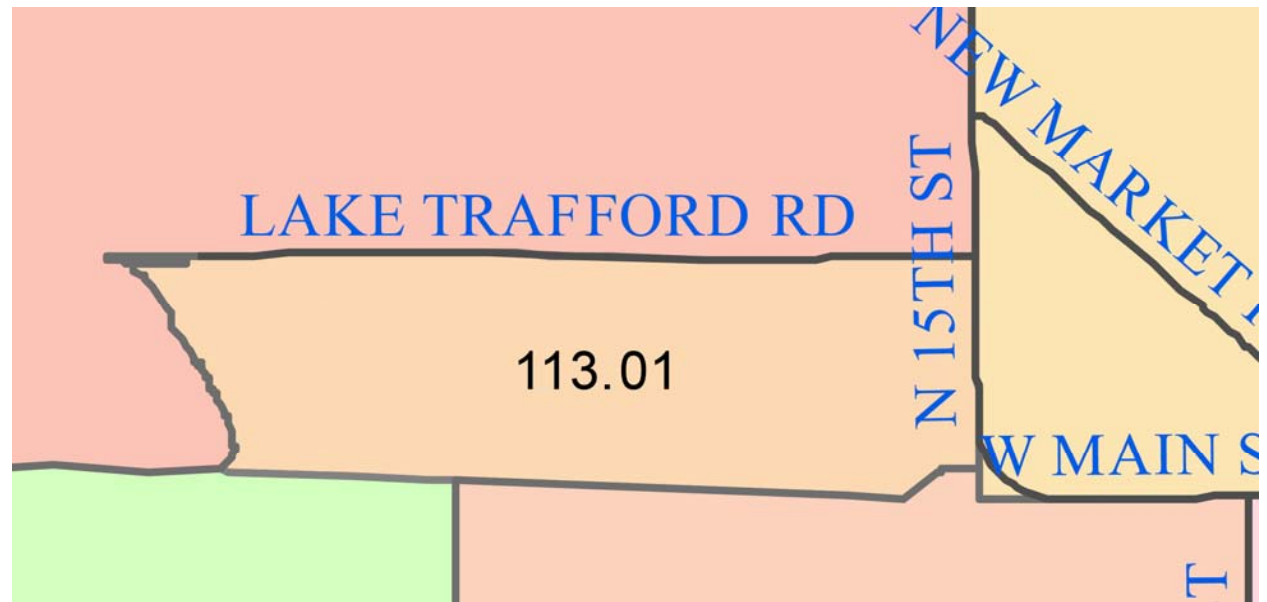
Labor Statistics

[View Latest Unemployment Rate in Collier County, Florida](#)

| | Census Tract 112.05, Collier County, Florida | Collier County, Florida | Florida | United States |
|---|--|-------------------------|-----------------|-----------------|
| Total | 2,025 | 300,135 | 16,645,386 | 255,797,692 |
| | 28.1% ↑ | 12.0% ↑ | 8.3% ↑ | 4.9% ↑ |
| In labor force: | 1,281 | 159,262 | 9,772,762 | 162,184,325 |
| | 63.3% | 53.1% | 58.7% | 63.4% |
| | 83.8% ↑ | 9.0% ↑ | 4.8% ↑ | 2.9% ↑ |
| In labor force: - Civilian labor force: | 1,281 | 159,191 | 9,717,687 | 161,159,470 |
| | 63.3% | 53.0% | 58.4% | 63.0% |
| | 83.8% ↑ | 9.0% ↑ | 4.8% ↑ | 3.0% ↑ |
| In labor force: - Civilian labor force: - Employed | 970 | 150,802 | 9,018,570 | 150,599,165 |
| | 47.9% | 50.2% | 54.2% | 58.9% |
| | 61.9% ↑ | 14.7% ↑ | 9.7% ↑ | 6.1% ↑ |
| In labor force: - Civilian labor force: - Unemployed | 311 | 8,389 | 699,117 | 10,560,305 |
| | 15.4% | 2.8% | 4.2% | 4.1% |
| | 217.3% ↑ | -42.2% ↓ | -33.4% ↓ | -27.4% ↓ |
| In labor force: - Armed Forces | | 71 | 55,075 | 1,024,855 |
| | | | 0.3% | 0.4% |
| | | -39.3% ↓ | -4.4% ↓ | -9.4% ↓ |
| Not in labor force | 744 | 140,873 | 6,872,624 | 93,613,367 |
| | 36.7% | 46.9% | 41.3% | 36.6% |
| | -15.8% ↓ | 15.5% ↑ | 13.9% ↑ | 8.7% ↑ |
| Mean Usual Hours Worked | 38.6 | 38.7 | 38.6 | 38.7 |
| | 1.8% ↑ | 0.3% ↑ | 0.1% ↑ | 0.2% ↑ |
| Mean Usual Hours Worked: Male | 40.9 | 41.3 | 40.5 | 41.1 |
| | 1.6% ↑ | 1.3% ↑ | 0.0% ↑ | 0.1% ↑ |
| Mean Usual Hours Worked: Female | 35.2 | 35.7 | 36.5 | 36.0 |
| | 2.5% ↑ | -0.8% ↓ | 0.0% ↑ | 0.3% ↑ |

Source: U.S. Census American Community Survey

Immokalee
Lake Trafford
QOZ



Immokalee QOZ Lake Trafford: Residents & Community

Population

| | Block Group 2, Census Tract 113.01, Collier County, Florida | Collier County, Florida | Florida | United States |
|-------------------|--|--------------------------------|----------------|----------------------|
| Total Population | 4,768 | 356,774 | 20,278,447 | 321,004,407 |
| | 28.7% ↑ | 10.3% ↑ | 7.4% ↑ | 3.8% ↑ |
| Total Population: | 2,248 | 175,608 | 9,914,361 | 158,018,753 |
| Male | 47.1% | 49.2% | 48.9% | 49.2% |
| | 11.7% ↑ | 9.9% ↑ | 7.4% ↑ | 3.9% ↑ |
| Total Population: | 2,520 | 181,166 | 10,364,086 | 162,985,654 |
| Female | 52.9% | 50.8% | 51.1% | 50.8% |
| | 48.8% ↑ | 10.6% ↑ | 7.4% ↑ | 3.7% ↑ |

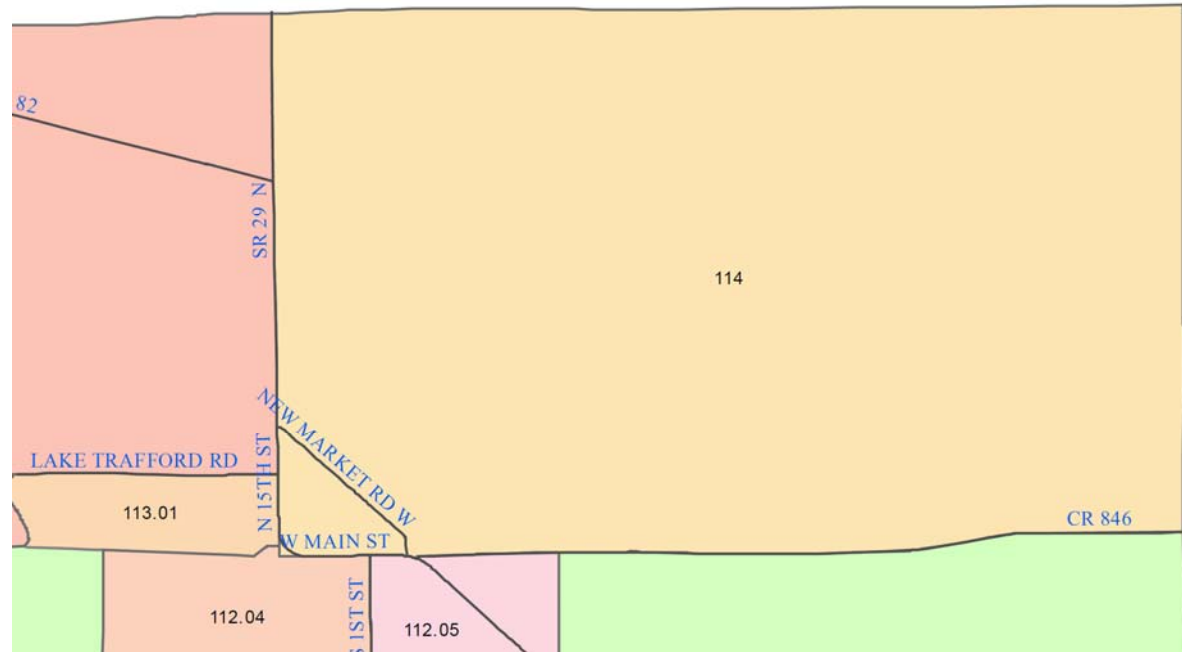
Source: U.S. Census American Community Survey

Immokalee QOZ: LakeTrafford: Education and Workforce Preparedness

| Educational Attainment | | | | |
|--|--|----------------------------|----------------|------------------|
| | Block Group 2, Census Tract 113.01, Collier County, Florida | Collier County, Florida | Florida | United States |
| Total Population: 25 Years and over | 2,549 | 268,314 | 14,396,066 | 216,271,644 |
| | 37.2% ↑ | 12.6% ↑ | 9.7% ↑ | 5.8% ↑ |
| High School & Higher | 1,516 | 232,115 | 12,608,718 | 188,834,530 |
| | 59.5% | 86.5% | 87.6% | 87.3% |
| | 133.2% ↑ | 14.5% ↑ | 11.9% ↑ | 7.8% ↑ |
| AS & Higher | 349 | 114,566 | 5,500,926 | 84,805,084 |
| | 13.7% | 42.7% | 38.2% | 39.2% |
| | 82.7% ↑ | 25.3% ↑ | 20.1% ↑ | 14.7% ↑ |
| High school diploma, GED or alternative credential | 619 | 70,815 | 4,170,468 | 59,093,612 |
| | 24.3% | 26.4% | 29.0% | 27.3% |
| | 140.9% ↑ | 9.7% ↑ | 6.5% ↑ | 2.4% ↑ |
| Some college Experience | 548 | 46,734 | 2,937,324 | 44,935,834 |
| | 21.5% | 17.4% | 20.4% | 20.8% |
| | 171.3% ↑ | 0.1% ↑ | 6.0% ↑ | 3.3% ↑ |
| Associate's degree | 90 | 20,836 | 1,405,068 | 17,917,481 |
| | 3.5% | 7.8% | 9.8% | 8.3% |
| | -18.2% ↓ | 26.2% ↑ | 22.8% ↑ | 13.9% ↑ |
| Bachelor's degree | 212 | 55,109 | 2,616,384 | 41,377,068 |
| | 8.3% | 20.5% | 18.2% | 19.1% |
| | 190.4% ↑ | 18.3% ↑ | 18.5% ↑ | 13.3% ↑ |
| Master's degree | 47 | 25,467 | 1,021,907 | 18,154,808 |
| | 1.8% | 9.5% | 7.1% | 8.4% |
| | 487.5% ↑ | 43.6% ↑ | 22.9% ↑ | 19.5% ↑ |
| Professional school degree | | 8,859 | 295,243 | 4,393,328 |
| | | 3.3% | 2.1% | 2.0% |
| | | 13.9% ↑ | 13.8% ↑ | 9.8% ↑ |
| Doctorate degree | | 4,295 | 162,324 | 2,962,399 |
| | | 1.6% | 1.1% | 1.4% |
| | | 51.8% ↑ | 18.8% ↑ | 19.2% ↑ |

Source: U.S. Census American Community Survey

Immokalee Airport QOZ



Immokalee Airport QOZ: Residents and Community

Population

| | Census Tract 114, Collier County, Florida | Collier County, Florida | Florida | United States |
|--------------------------|--|--------------------------------|----------------|----------------------|
| Total Population | 5,310 | 356,774 | 20,278,447 | 321,004,407 |
| | 24.4% ↑ | 10.3% ↑ | 7.4% ↑ | 3.8% ↑ |
| Total Population: Male | 3,113 | 175,608 | 9,914,361 | 158,018,753 |
| | 58.6% | 49.2% | 48.9% | 49.2% |
| | 18.7% ↑ | 9.9% ↑ | 7.4% ↑ | 3.9% ↑ |
| Total Population: Female | 2,197 | 181,166 | 10,364,086 | 162,985,654 |
| | 41.4% | 50.8% | 51.1% | 50.8% |
| | 33.4% ↑ | 10.6% ↑ | 7.4% ↑ | 3.7% ↑ |

Source: U.S. Census American Community Survey

Immokalee Airport QOZ: Economic Indicators

Labor Statistics

[View Latest Unemployment Rate in Collier County, Florida](#)

| | Census Tract 114, Collier County, Florida | Collier County, Florida | Florida | United States |
|--|---|-------------------------|-----------------|-----------------|
| Total | 4,056 | 300,135 | 16,645,386 | 255,797,692 |
| | 33.6% ↑ | 12.0% ↑ | 8.3% ↑ | 4.9% ↑ |
| In labor force: | 3,040 | 159,262 | 9,772,762 | 162,184,325 |
| | 75.0% | 53.1% | 58.7% | 63.4% |
| | 56.4% ↑ | 9.0% ↑ | 4.8% ↑ | 2.9% ↑ |
| In labor force: - Civilian labor force: | 3,040 | 159,191 | 9,717,687 | 161,159,470 |
| | 75.0% | 53.0% | 58.4% | 63.0% |
| | 56.4% ↑ | 9.0% ↑ | 4.8% ↑ | 3.0% ↑ |
| In labor force: - Civilian labor force: - Employed | 2,667 | 150,802 | 9,018,570 | 150,599,165 |
| | 65.8% | 50.2% | 54.2% | 58.9% |
| | 52.7% ↑ | 14.7% ↑ | 9.7% ↑ | 6.1% ↑ |
| In labor force: - Civilian labor force: - Unemployed | 373 | 8,389 | 699,117 | 10,560,305 |
| | 9.2% | 2.8% | 4.2% | 4.1% |
| | 88.4% ↑ | -42.2% ↓ | -33.4% ↓ | -27.4% ↓ |
| In labor force: - Armed Forces | | 71 | 55,075 | 1,024,855 |
| | | | 0.3% | 0.4% |
| | | -39.3% ↓ | -4.4% ↓ | -9.4% ↓ |
| Not in labor force | 1,016 | 140,873 | 6,872,624 | 93,613,367 |
| | 25.0% | 46.9% | 41.3% | 36.6% |
| | -6.9% ↓ | 15.5% ↑ | 13.9% ↑ | 8.7% ↑ |
| Mean Usual Hours Worked | 36.7 | 38.7 | 38.6 | 38.7 |
| | -4.1% ↓ | 0.3% ↑ | 0.1% ↑ | 0.2% ↑ |
| Mean Usual Hours Worked: Male | 39.8 | 41.3 | 40.5 | 41.1 |
| | 0.0% ↑ | 1.3% ↑ | 0.0% ↑ | 0.1% ↑ |
| Mean Usual Hours Worked: Female | 31.6 | 35.7 | 36.5 | 36.0 |
| | -11.9% ↓ | -0.8% ↓ | 0.0% ↑ | 0.3% ↑ |

Immokalee QOZ: Development Indicators

LEGEND

URBAN DESIGNATION

MIXED USE DISTRICT

- LOW RESIDENTIAL SUBDISTRICT
- MIXED RESIDENTIAL SUBDISTRICT
- HIGH RESIDENTIAL SUBDISTRICT
- NEIGHBORHOOD CENTER SUBDISTRICT
- COMMERCE CENTER - MIXED USE SUBDISTRICT
- RECREATIONAL TOURIST SUBDISTRICT
- PLANNED UNIT DEVELOPMENT COMMERCIAL SUBDISTRICT

COMMERCIAL DISTRICT

- COMMERCIAL SUBDISTRICT - S.R. 29 AND JEFFERSON AVENUE

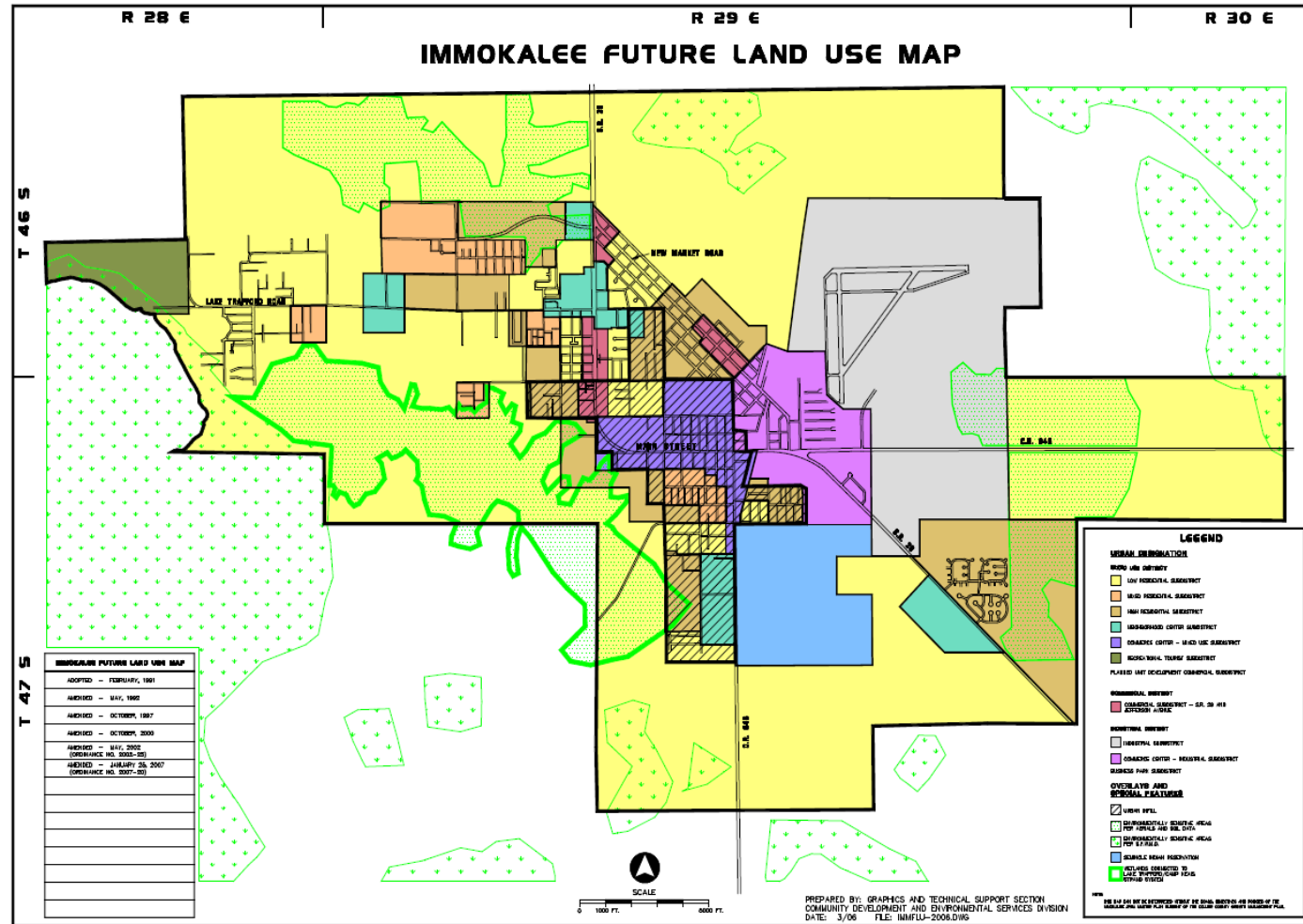
INDUSTRIAL DISTRICT

- INDUSTRIAL SUBDISTRICT
- COMMERCE CENTER - INDUSTRIAL SUBDISTRICT
- BUSINESS PARK SUBDISTRICT

OVERLAYS AND SPECIAL FEATURES

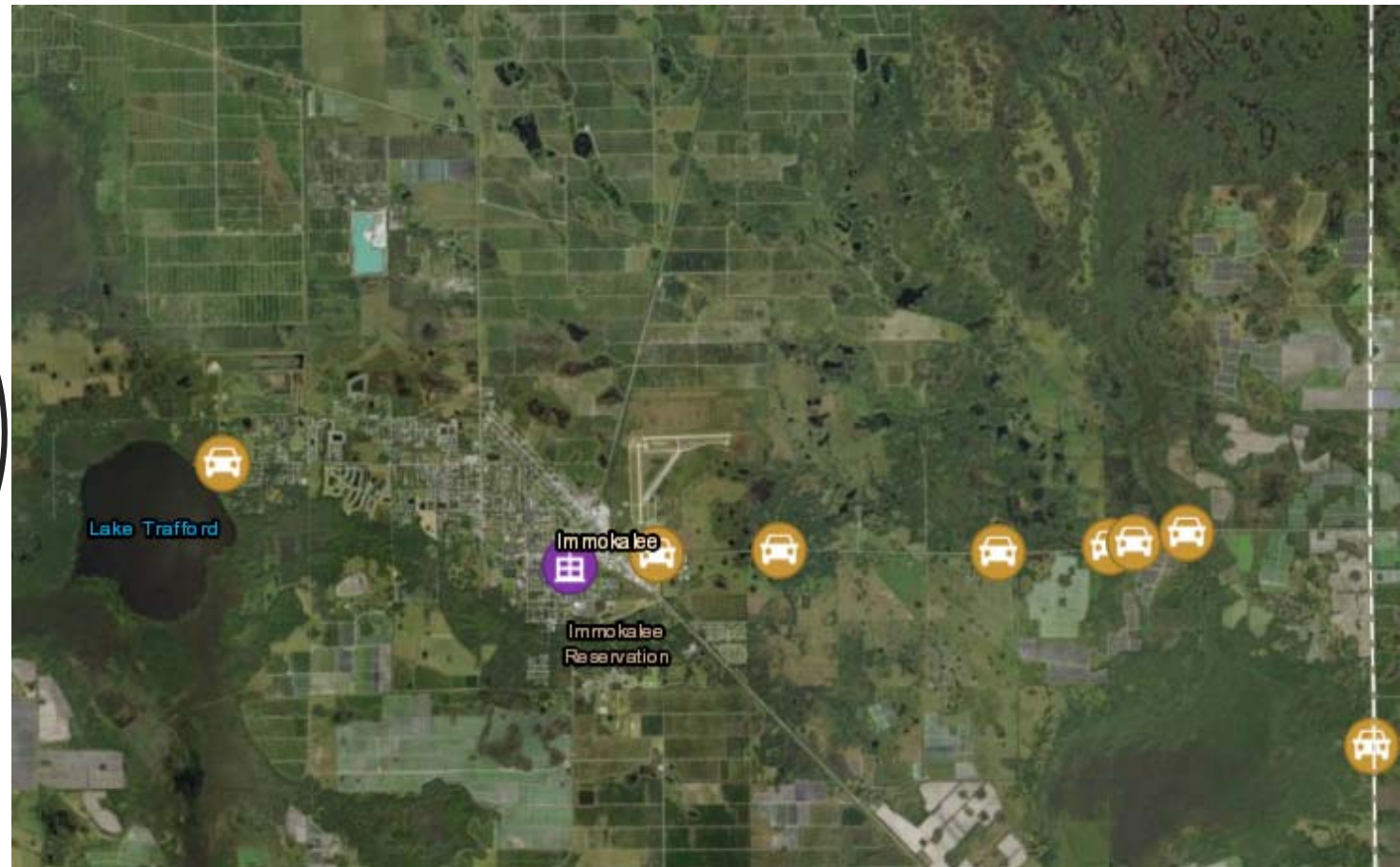
- URBAN INFILL
- ENVIRONMENTALLY SENSITIVE AREAS PER AERIALS AND SOIL DATA
- ENVIRONMENTALLY SENSITIVE AREAS PER S.F.W.M.D.
- SEMINOLE INDIAN RESERVATION
- WETLANDS CONNECTED TO LAKE TRAFFORD/CAMP KEAIS STRAND SYSTEM

NOTE:
THIS MAP CAN NOT BE INTERPRETED WITHOUT THE GOALS, OBJECTIVES AND POLICIES OF THE IMMOKALEE AREA MASTER PLAN ELEMENT OF THE COLLIER COUNTY GROWTH MANAGEMENT PLAN.



Source: Immokalee Future Land Use Map

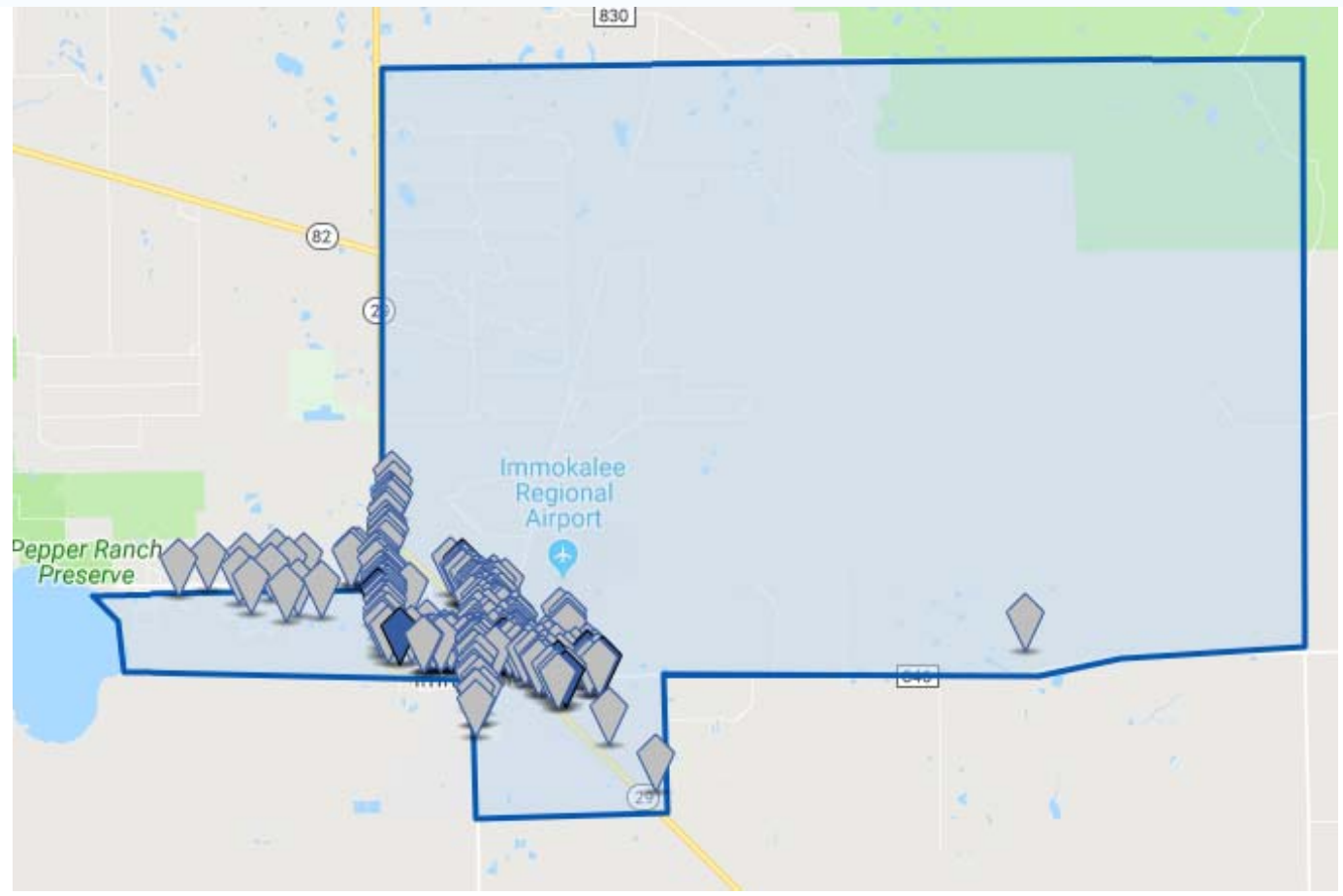
Immokalee Community Projects



Source: ESRI ArcGIS Online

| INVENTORY SF | UNDER CONSTRUCTION SF | 12 MO NET ABSORPTION SF | VACANCY RATE | MARKET RENT/SF | MARKET SALE PRICE/SF | MARKET CAP RATE |
|-----------------------|-----------------------|----------------------------|-------------------------|----------------------------|--------------------------|----------------------|
| 2.9 M 0% | 0 - | 9.3 K +148.3% | 1.4% -0.5% | \$13.39 +3.0% | \$127 +4.2% | 6.7% 0% |
| Prior Period 2.9 M | Prior Period 0 | Prior Period (19.4 K) | Prior Period 1.9% | Prior Period \$13.00 | Prior Period \$122 | Prior Period 6.7% |

Available
Properties in
Immokalee
QOZs



Source: Co-Star