

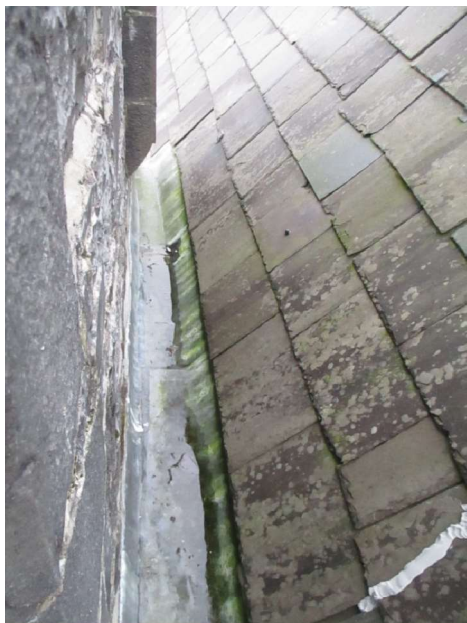
Church of the Assumption, Collooney

Repair works to valley between tower and roof over gallery and nave

Photographs before the works commenced



Front view of church. Note: The valley to be repaired is located between the tower and the gable



Detail of valley between tower and roof over gallery to be re-leaded

and valley boards replaced . The tower is on the left and the roof over the nave is on the right.



Detail of valley between tower and roof over gallery to be re-leaded.

Bottom of lead lined hatch is also visible.



Access to external valley and hatch to roof space: A makeshift plywood panel was wedged into this opening. The original door has since been found in the tower and it is proposed to repair and re-fit this door.



The original door which has been found in the tower. It is proposed to repair and re-fit this door in its original position.



Top of lead lined access hatch with a temporary flashing to prevent leaks to the roof space

This emergency repair was carried out in the summer of 2023. It is proposed to replace this hatch with a patent Velux or similar side hung opening light to allow access into the roof space. Note: This is the only access into the roof space over the nave.

Pictures of repair works in progress



New access hatch being prepared for installation in roof



Original door and frame repaired and ready for installation in tower



Pictures of work in progress at lead lined valley



Picture of lead during the opening up at access hatch to roof space



Lead valley: Works in progress



Original door and frame repaired and re-fitted in tower



Detail of lead work at end of valley and corner of buttress



Valley re-lined with lead



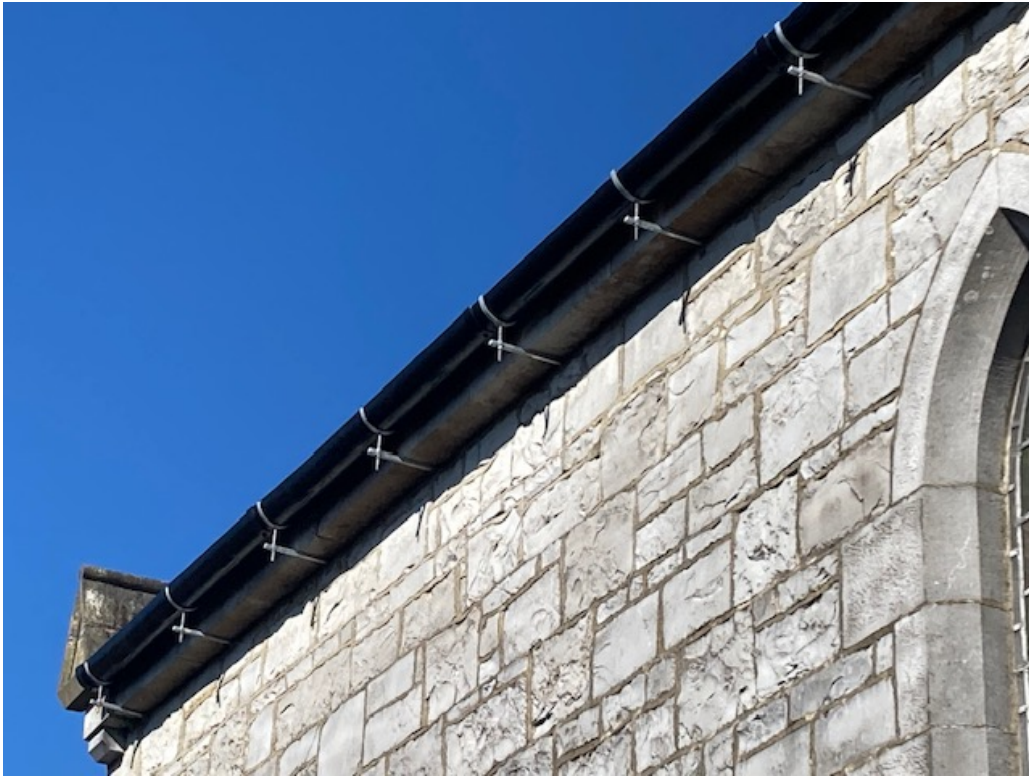
Valley re-lined with lead



New access hatch in position



Detail of completed gutter and replacement brackets



Detail of completed gutter and replacement brackets



Detail of completed gutter and replacement brackets



Detail of re-pointing of masonry on tower



Picture of re-pointing of masonry on tower



General view of re-pointing of masonry on tower



Detailed of re-pointing of masonry on corner of tower



View of pointing on top of buttress



Re-pointed panel of stonework on tower



Re-pointed stonework on corner of tower



Lead cladding on top of buttress



View of completed lead linings to sill and string course on SE face of tower. Some lime mortar pointing of stonework is also pictured to the RHS



Detail of lead linings to string course and sill under louvred opening to the belfry

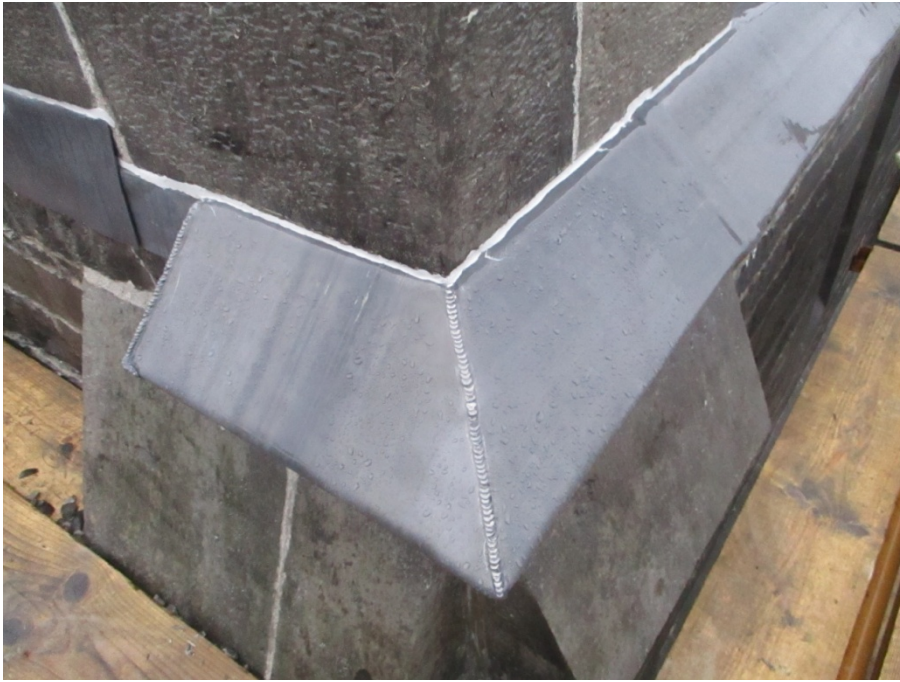


Detail of lead linings to string course and sill under louvred opening of belfry

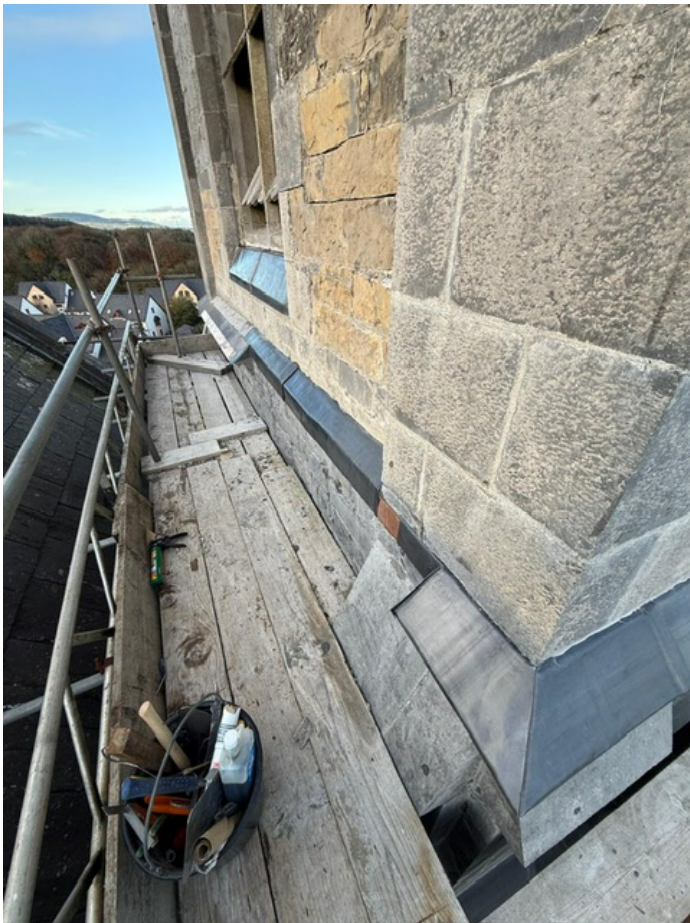


Detail of lead linings to string course and sill under louvred opening of belfry on the SW face of the tower.

Note that the string course was not constructed fully on this side and a ledge was left. This has been dressed with lead, the top part of which has been sloped



Detail of lead dressing to string course at corner of tower



View of lead work in progress