

B E R N E W O R K W E A R

WORK HUNT 2

The Berne Work 2 Hunt collection is workwear made for the guy whose favorite color is Realtree. He knows hard work doesn't stop at the job site - working hard all day to clock out of the job and clock in to the treestand. This no-frills camo gear focuses on durability, comfort, and warmth.



HJ51

Heritage Hooded Jacket

Fabric: Heavy-duty 10 oz. cotton duck

Body: Heavyweight quilt lined brushed tricot

Sleeves: Medium-weight quilt lined taffeta

• *Water repellent finish • Triple-needle stitched main seams • Two front patch pockets • Three-piece insulated hood with drawstring • Pleated elbows and action back • Knit cuffs and waistband*

HJ51EDG
Realtree EDGE™

HJ51TM
Realtree Timber™

HJ51DC
Digital Camo - NEW!



Regular: S-2XL 3XL-4XL* 5XL-6XL**
Tall: M-2XL 3XL-4XL* 5XL-6XL**

*1x upcharge **2x upcharge
Imported





NEW

HJ65

Workman's Hooded Jacket

Shell: Heavy-duty 10 oz. 100% cotton duck

Body: Heavyweight quilt lined taffeta

Sleeves: Medium-weight quilt lined taffeta

• *Water repellent finish* • *Triple-needle stitched main seams* • *Heavy-duty brass front zipper* • *Two front patch pockets* • *Three inside chest pockets* • *Pleated elbows and action back* • *Hidden storm cuffs*



JL17EDG
Realtree EDGE™



Regular: S-2XL 3XL-4XL* 5XL-6XL**
Tall: M-2XL 3XL-4XL* 5XL-6XL**

*1x upcharge **2x upcharge
Imported



HJ626

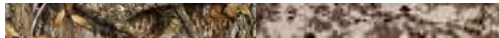
Dorset Hooded Work Coat

Fabric: Super-Duty 10 oz. cotton duck

Body: Heavyweight sherpa lined

Sleeves: Medium-weight quilt lined taffeta

• *Pleated elbows and action back* • *Heavy-duty brass front zipper* • *Side vents with snap closures* • *Three-piece lined hood with drawstring* • *Extended back for added warmth*



HJ626EDG
Realtree EDGE™

HJ626DC
Digital Camo - NEW!



Regular: M-2XL 3XL-4XL*
Tall: L-2XL

*1x upcharge
Imported



NEW

V812

Workman's Duck Vest

Fabric: Heavy-duty 10 oz. cotton duck
Liner: Heavyweight quilt lined taffeta

- *Water repellent finish* • *Full-cut arm openings for maximum comfort*
- *Reinforced bartacks at all stress points* • *Three inside chest pockets* • *Extended back for extra warmth* • *Extra-large front patch pockets* • *Rib knit collar*



V812EDG
Realtree EDGE™

V812DC
Digital Camo - NEW!



Regular: S-2XL 3XL-4XL* 5XL-6XL**

*1x upcharge **2x upcharge
Imported



SP413

Inland Hooded Pullover

Fabric: 9 oz. 60% cotton 40% polyester fleece

• Kangaroo pocket • Three piece hood with drawstring • Reinforced bartacks at stress points



SP413EDG
Realtree EDGE™

Regular: M-2XL 3XL-4XL*
Tall: LT-2XLT

* 1x upcharge
Imported



SZ101

Heritage Thermal Lined Sweatshirt

Fabric: 9 oz. 60% cotton 40% polyester fleece

Liner: 5 oz. thermal

• Two-needle stitched main seams • Double layered three-piece hood
• Oversized front pockets • Knit cuffs and waistband • Nylon front zipper
• Reinforced bartacks at stress points



SZ101EDG
Realtree EDGE™

Regular: S-2XL 3XL-4XL* 5XL-6XL**
Tall: M-2XL 3XL-4XL* 5XL-6XL**

* 1x upcharge **2x upcharge
Imported



B415

Heritage Insulated Bib Overall

Fabric: Super-duty 10 oz. cotton duck

Body: Medium-weight quilt lined taffeta

- Full-length heavy-duty brass zipper • Triple-needle stitched main seams
- Water repellent finish • Insulated "High Back" design • Zippered left hip pocket
- Double inside chest pockets • Hammer loop and utility pockets
- Reinforced knees • Adjustable leg snaps • Brass two-way front zipper



B415EDG
Realtree EDGE™

B415TM
Realtree Timber™

B415DC
Digital Camo - NEW!



Short: S-2XL 3XL-4XL* 5XL-6XL**
Regular: S-2XL 3XL-4XL* 5XL-6XL**
Tall: M-2XL 3XL-4XL* 5XL-6XL**

*1x upcharge **2x upcharge
Imported



B1067

Slab Unlined Duck Bib Overall

Fabric: Heavy-duty 10 oz. cotton duck

- Water repellent finish • Knee-length zipper • Triple-needle stitched seams
- Generously sized for maximum comfort • Brass rivets at front stress points
- Side utility pockets and hammer loop • Adjustable elasticized bib straps
- Reinforced knees



B1067EDG
Realtree EDGE™



Imported

Inseam	Waist	* 1x upcharge	**2x upcharge
28" X-Short:	32, 34, 36, 38, 40, 42, 44*, 46*		
30" Short:	32, 34, 36, 38, 40, 42, 44*, 46*		
32" Reg:	30, 32, 34, 36, 38, 40, 42, 44*, 46*, 48*, 50*, 52*, 54*, 56**, 58**, 60**		
34" Tall:	32, 34, 36, 38, 40, 42, 44*, 46*, 48*, 50*		
36" X-Tall:	32, 34, 36, 38, 40, 42		



P921

Flex180™ Duck Pant

Fabric: 7.8 oz. 98% cotton 2% spandex duck

- Contemporary Fit • Low rise • Boot Cut • Triple-needle stitched main seams
- Button front with brass fly zipper • Side utility pockets • Reinforced bartacks at stress points



P921EDG
Realtree EDGE™

Inseam	Waist	* 1x upcharge	**2x upcharge
30:	30, 31, 32, 33, 34, 35, 36, 38, 40, 42, 44*, 46*, 48*, 50*, 52*, 54*, 56**, 58**, 60**		
32:	30, 31, 32, 33, 34, 35, 36, 38, 40, 42, 44*, 46*, 48*, 50*, 52*, 54*, 56**, 58**, 60**		
34:	30, 32, 34, 36, 38, 40, 42, 44*, 46*, 48*, 50*, 52*, 54*, 56**, 58**, 60**		
36:	30, 32, 34, 36, 38, 40, 42		

Imported



BSM38

Lightweight Performance Tee

Fabric: 4.2 oz. 60% cotton 40% polyester jersey

- Moisture wicking • Stain release • Chest pocket • Performance fit • Taped neck seam for comfort • Tagless neck label



BSM38EDG
Realtree EDGE™



Regular: S-2XL 3XL-4XL*
Tall: L-2XL 3XL-4XL* 5XL-6XL**

*1x upcharge **2x upcharge
Imported



BSM39

Lightweight Performance Long Sleeve Tee

Fabric: 4.2 oz. 60% cotton 40% polyester jersey

- Moisture wicking • Stain release • Chest pocket • Performance fit • Taped neck seam for comfort • Tagless neck label



BSM39EDG
Realtree EDGE™



Regular: S-2XL 3XL-4XL* 5XL-6XL**
Tall: L-2XL 3XL-4XL* 5XL-6XL**

*1x upcharge **2x upcharge
Imported