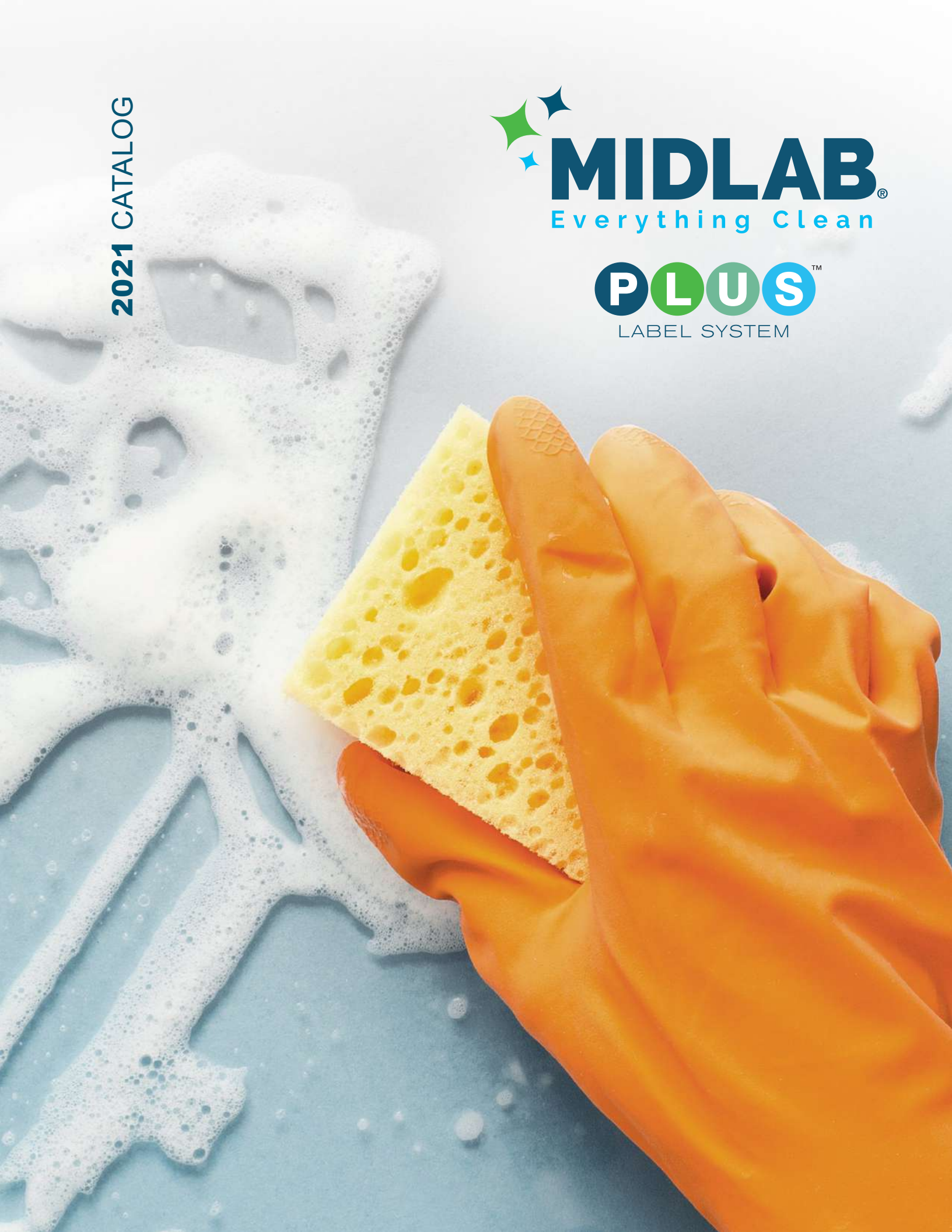


2021 CATALOG



CONTENTS

New from Midlab	4
Air Care	6
Hand Care	8
Restroom Care	10
Disinfectants	12
General Cleaning	14
Industrial	16
Kettle Clean Brewery Sanitation System	18
Specialty Products	19
Transportation	21
Carpet Care	23
Floor Care	25
Food Service	30
Machine Warewash	32
Laundry	34
Convenience Packets	37
Dilution Control	39
Environmentally Responsible	42
Certifications	47

Showcasing the



The Easy Way To Train

Because Cleaning Shouldn't Be Complicated

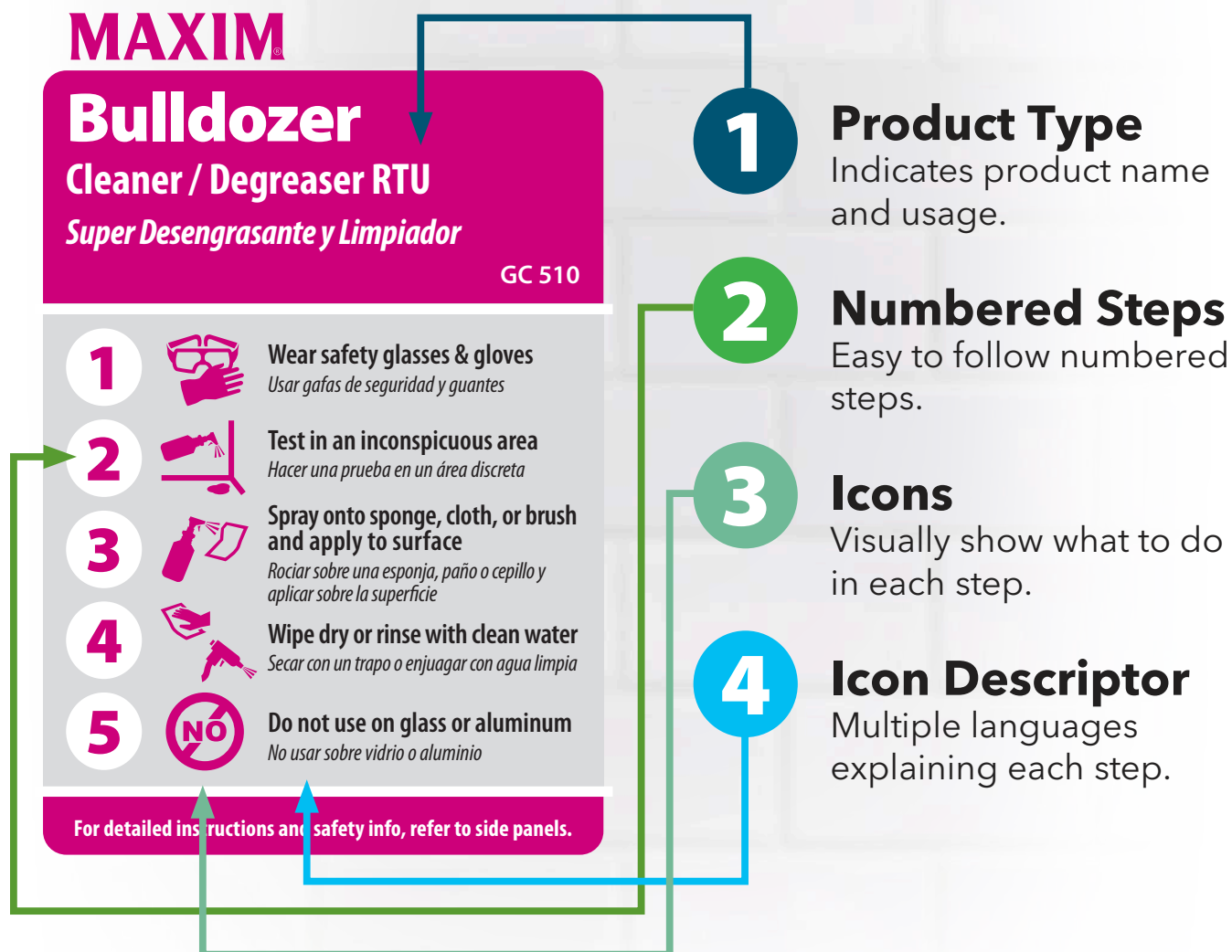
- ✓ **Easy to Understand**
- ✓ **Less Waste**
- ✓ **Proper Product Usage**
- ✓ **Less Training Time**



Understanding the



in 4 Easy Steps:



Air Care



Maxim® Air Care products neutralize and eliminate malodors in the most demanding environments, imparting the fragrance of your choice. Concentrated for greater economy, these unique formulas work well alone or when mixed with other cleaning products.

Our wide variety of fragrant choices in granular, liquid and aerosol forms provide the best selection for every deodorizing need, from classroom to warehouse. Maxim® malodor counteractants will refresh even the most unpleasant stale odors.

AD 101

Granular Deodorant

Absorbs liquid malodors; ideal for deodorizing trash cans and dumpsters; an effective vomit deodorant.

Color: Brown
Fragrance: Cherry
pH Range: n/a
Dilution: RTU

Available Sizes: 25 lb

AD 102

Fresh

Broad spectrum organic odor neutralizer. Versatile applications; long-lasting fresh fragrance.

Color: Colorless
Fragrance: Fresh
pH Range: 7.0 - 7.5
Dilution: RTU

Available Sizes: 12 / 1 qt | 4 / 1 gal

AD 104

Halt Plus

A versatile professional strength odor neutralizer with a pleasant baby powder fragrance.

Color: Colorless / Amber
Fragrance: Baby Powder
pH Range: 7.0 - 7.5
Dilution: RTU

Available Sizes: 4 / 1 gal

AD 106

Capri - Lemon

Versatile and adaptable air freshener; eliminates noxious odors with a pleasant lemon scent.

Color: Yellow
Fragrance: Lemon
pH Range: 6.5 - 7.0
Dilution: RTU

Available Sizes: 4 / 1 gal

AD 108

Capri - Wild Cherry

Immediate, long-lasting air quality improvement with a pleasant cherry scent.

Color: Red
Fragrance: Cherry
pH Range: 6.5 - 7.0
Dilution: RTU

Available Sizes: 12 / 1 qt | 4 / 1 gal

AD 109**Capri - Original**

Our most popular fragrance destroys odors at their source. A great smoke odor eliminator.

Color: Clear / Yellowish

Fragrance: Citrus

pH Range: 6.5 - 7.0

Dilution: RTU

Available Sizes: 12 / 1 qt | 4 / 1 gal

AD 151**Tobacco Neutralizer**

Extreme tobacco malodor neutralizer; perfect for hotel rooms and offices. Light vanilla fragrance.

Color: Pale Yellow

Fragrance: Characteristic

pH Range: n/a

Dilution: RTU

Available Sizes: 12 / 20 oz

AD 118**Apple Fresh**

Highly effective air freshener with a fresh apple scent, removes malodors including smoke odors.

Color: Colorless

Fragrance: Green Apple

pH Range: 7.0 - 7.5

Dilution: RTU

Available Sizes: 12 / 1 qt | 4 / 1 gal

AD 154**Neutra - Odor**

Powerful odor-destroying molecules eliminate the toughest odors with a fresh, clean fragrance.

Color: Colorless / Amber

Fragrance: Clean

pH Range: 6.5 - 7.0

Dilution: RTU

Available Sizes: 12 / 1 qt

Hand Care



Maxim® Hand Care products clean and protect your skin with the finest formulations available. Every workplace and every occupation have different hand washing and cleaning needs. From public restrooms to heavy duty industrial cleansers, only the finest ingredients have been selected for these formulations.

HB 210

Bublzz

Lotionized hand soap; thick, rich viscosity and a pleasant cherry fragrance.

Color: Pink
Fragrance: Cherry
pH Range: 6.5 - 7.0
Viscosity: 3000 - 6000 cps
Dilution: RTU

Available Sizes: 4 / 1 gal

HB 215

Coconut Hand Soap

Free rinsing even in hard water, with natural skin-softening emollients and a pleasant sweet coconut scent.

Color: Yellow
Fragrance: Almond
pH Range: 8.0 - 9.0
Viscosity: < 10 cps
Dilution: RTU

Available Sizes: 4 / 1 gal

HB 220

Hand & Body Shampoo

Features a delicious Tangerine Lemongrass scent, gentle on skin, lathers well, rinses easily, and leaves skin clean and fresh.

Color: Ocean Blue
Fragrance: Tangerine Lemongrass
pH Range: 6.5 - 7.0
Viscosity: 3500 - 4500 cps
Dilution: RTU

Available Sizes: 4 / 1 gal

HB 240

Pearlized Hand Soap

Soothes dry or abused skin with thick, rich lather and a pleasant herbal mint fragrance.

Color: Pink Pearlized
Fragrance: Herbal Mint
pH Range: 6.0 - 6.5
Viscosity: 9000 - 12000 cps
Dilution: RTU

Available Sizes: 4 / 1 gal

HB 245

Touch of Pearl

Thick, rich, pearlized hand soap and body wash, leaves skin smooth and clean.

Color: White Pearlized
Fragrance: Moncheil
pH Range: 7.5 - 8.0
Viscosity: 3500 - 5000 cps
Dilution: RTU

Available Sizes: 4 / 1 gal

HB 250

Instant Foam Hand Sanitizer

Patented formulation featuring exceptional skin feel, conditioning and moisturizing properties.

Color: Colorless
Fragrance: None
pH Range: 5.0 - 7.0
Viscosity: < 10 cps
Dilution: RTU

Available Sizes: 4 / 1 gal

HB 252

Foaming Hand Soap

Pleasantly scented, ready-to-use skin cleanser, ideal for schools, offices, and food service.

Color: Blue
Fragrance: Clean
pH Range: 8.0 - 8.5
Viscosity: < 10 cps
Dilution: RTU

Available Sizes: 4 / 1 gal

HB 266**Grime Master**

Heavy duty hand cleaner, removes grease and oil, pleasant citrus fragrance.

Color: Amber
Fragrance: Citrus
pH Range: 9.5 - 10.0
Viscosity: 4000 - 8000 cps
Dilution: RTU or up to 1:7

Available Sizes: 4 / 1 gal

HB 274**Antibacterial Hand Soap**

Pearlized anti-bacterial hand cleaner, effective against MRSA, VRE and Staph.

Color: Pearlized White
Fragrance: Melon
pH Range: 7.0 - 9.0
Viscosity: 1500 - 2500 cps
Dilution: RTU

Available Sizes: 4 / 1 gal

HB 270**Antibacterial Foam Soap FDF**

Foaming antiseptic hand soap that effectively removes bacteria with normal use

Color: Colorless
Fragrance: None
pH Range: 7.8 - 8.8
Viscosity: < 10 cps
Dilution: RTU

Available Sizes: 4 / 1 gal

HB 276**Sanitizing Hand Soap**

E-2 sanitizing hand cleaner with quaternary ammonium chlorides, ideal for institutions and food service.

Color: Colorless
Fragrance: None
pH Range: 7.0 - 7.5
Dilution: RTU

Available Sizes: 4 / 1 gal

HB 272**Antibacterial Foam Soap**

Foaming antiseptic hand soap that effectively removes bacteria with normal use.

Color: Orange
Fragrance: Clean
pH Range: 7.5 - 8.5
Viscosity: < 10 cps
Dilution: RTU

Available Sizes: 4 / 1 gal

HB 278**Assure Antibacterial**

Thick antiseptic hand soap that effectively removes bacteria with normal use and is enhanced for softer, smoother hands.

Color: Orange
Fragrance: Clean
pH Range: 7.0 - 9.0
Viscosity: 2800 - 3300 cps
Dilution: RTU

Available Sizes: 4 / 1 gal



Restroom Care



Maxim® Restroom Care products are carefully formulated to consistently deliver a sparkling shine and long-lasting sanitation, making the job easier for you.

From fast-acting foaming disinfectants formulated for sinks, shower stalls, bathtubs, and hampers, to cream cleansers that polish as they clean, the Maxim® broad selection of restroom care products makes it easy to clean, disinfect, and sanitize any restroom – along with keeping them smelling fresh all day long.

RB 309

True Blue

Thickened 9% Hydrochloric Acid formula quickly removes rust, lime and scale.

Color: Dark Blue
Fragrance: Mint
pH Range: <1.0
Dilution: RTU

Available Sizes: 12 / 1 qt

RB 312

HCL

High acid, ready-to-use toilet bowl cleaner designed to easily remove difficult stains. Does not damage porcelain!

Color: Green
Fragrance: Mint
pH Range: <1.0
Dilution: RTU

Available Sizes: 12 / 1 qt

RB 320

Acid Bowl Cleaner

High acid, ready-to-use product designed to clean and deodorize toilet bowls and urinals.

Color: White
Fragrance: None
pH Range: 1.0 - 3.0
Dilution: RTU

Available Sizes: 12 / 1 qt

RB 322

Phoz Gel

Thick and clinging 20% Phosphoric Acid formula cleans sinks, showers, tubs and toilets with prolonged contact time.

Color: Pink
Fragrance: Cherry
pH Range: <1.0
Dilution: RTU

Available Sizes: 12 / 1 qt

RB 325

Porcelain, Bowl & Tile Cleaner

Dissolves mineral deposits and soap scum with 25% Phosphoric Acid; with a pleasant floral fragrance.

Color: Pink
Fragrance: Floral
pH Range: <1.0
Dilution: RTU

Available Sizes: 12 / 1 qt

RB 352

No Acid

Hospital-grade disinfectant cleaner, effective against blood-borne pathogens and TB.

Color: Blue
Fragrance: Floral
pH Range: 11.5 - 12.0
Dilution: RTU

Available Sizes: 12 / 1 qt

RB 360**AFBC**

Hospital grade acid free restroom cleaner that kills germs and odor-causing bacteria.

Color: Blue
Fragrance: Fresh
pH Range: 6.0 - 9.0
Dilution: RTU

Available Sizes: 12 / 1 qt

RB 370**Crème**

Non-acid crème cleanser with pleasant baby powder fragrance; will not scratch surfaces.

Color: White
Fragrance: Baby Powder
pH Range: 9.0 - 9.5
Dilution: RTU

Available Sizes: 12 / 1 qt | 55 gal

RB 382**Foaming Restroom Cleaner**

Low-pH organic acid salt removes soap scum, lime and scale deposits.

Color: Yellow
Fragrance: Pleasant
pH Range: 1.0 - 1.5
Dilution: RTU

Available Sizes: 12 / 1 qt | 4 / 1 gal

RB 384**All Surface Bathroom Cleaner**

Non-acid disinfectant cleaner and deodorizer. 1-minute contact time against HIV-1.

Color: Blue
Fragrance: Fresh
pH Range: 11.5 - 12.0
Dilution: RTU

Available Sizes: 12 / 1 qt | 4 / 1 gal

RB 386**Mold-n-Mildew**

Cleans and removes mold and mildew stains with the power of bleach.

Color: Straw
Fragrance: Clean
pH Range: 12.5 - 13.0
Dilution: RTU

Available Sizes: 12 / 1 qt

RB 388**White²**

A fast-acting, HCl based cleaner that whitens and deodorizes with less scrubbing.

Color: White
Fragrance: Mint
pH Range: <1.0
Dilution: RTU

Available Sizes: 12 / 1 qt | 4 / 1 gal

Disinfectants



Maxim® Disinfectant products are the perfect choice for product effectiveness and performance reliability.

DS 402

Neutral Disinfectant Lemon Scent

Economical, full spectrum disinfectant with versatile soil removing power, safe on floor finishes.

Color: Yellow
Fragrance: Lemon
pH Range: 7.5 - 8.0
Dilution: 4 oz / gal

Available Sizes: 4 / 1 gal | 5 gal

DS 404

Neutral Disinfectant Mint Scent

Phosphate-free, quaternary surfactant blend that cleans, disinfects and deodorizes.

Color: Green
Fragrance: Fresh Mint
pH Range: 7.5 - 8.0
Dilution: 4 oz / gal

Available Sizes: 4 / 1 gal

DS 406

Pine Disinfectant Cleaner

Non-corrosive, non-staining neutral pH cleaner with 3.95% pine oil.

Color: Brown
Fragrance: Pine
pH Range: 6.5 - 7.0
Dilution: 3 - 12 oz / gal

Available Sizes: 4 / 1 gal

DS 407

Neutral Disinfectant Pine Scent

A pH neutral disinfecting cleaner and deodorizer that is safe for use on floor finishes.

Color: Brown
Fragrance: Pine
pH Range: 7.5 - 8.0
Dilution: 4 oz / gal

Available Sizes: 4 / 1 gal

DS 408

Neutral Disinfectant Fresh Scent

Hospital grade disinfectant, cleaner and deodorizer, non-staining, non-corrosive, safe on plastic, vinyl, enamel and tile.

Color: Blue
Fragrance: Fresh & Clean
pH Range: 7.5 - 8.0
Dilution: 4 oz / gal

Available Sizes: 4 / 1 gal | 5 gal

DS 410

Germicidal Cleaner

Hospital-use germicidal disinfectant cleaner and deodorant designed for general cleaning, and controlling mold and mildew.

Color: Yellow
Fragrance: Lemon
pH Range: 10.0 - 11.0
Dilution: RTU

Available Sizes: 12 / 1 qt | 4 / 1 gal | 55 gal

DS 411

Surface Disinfectant & Deodorant

Dual quat phenolic blend kills TB, HIV-1 and Staph. Spray & wipe aerosol, air dry.

Color: n/a
Fragrance: n/a
pH Range: n/a
Dilution: RTU

Available Sizes: 12 / 20 oz

DS 420

GSC Germicidal Spray Cleaner

Convenient, RTU disinfectant for all hard surfaces and kills blood-borne pathogens. Effective against TB.

Color: Colorless
Fragrance: Lemon
pH Range: 11.5 - 12.0
Dilution: RTU

Available Sizes: 12 / 1 qt

DS 462**FACILITY⁺**

EPA registered hydrogen peroxide disinfectant, great for kitchens, offices, hotels, schools, and more.

Color: Colorless
Fragrance: None
pH Range: < 1.0
Dilution: 2 oz / gal

Available Sizes: 6 / 1 qt | 4 / 1 gal | 2 / 3 L | 4 / 64 oz

DS 421**Foaming Multi-Purpose Disinfectant Cleaner**

EPA registered, quat based aerosol disinfectant, effective against HIV-1, with thick foam that clings to vertical surfaces.

Color: Yellow
Fragrance: Characteristic
pH Range: 11.8 - 12.8
Dilution: RTU

Available Sizes: 12 / 20 oz

DS 425**CL-25 Alkaline Sanitizer**

Rinse-free chlorinated sanitizer for food service equipment, in individual convenience packets.

Color: White
Fragrance: Characteristic
pH Range: (1%) 9.0 - 9.5
Dilution: 1 packet / 2½ gal

Available Sizes: 200 / 0.25 oz packet

DS 430**Hard Surface Sanitizer**

Tabletop and decanter sanitizing spray and wipe formula, kills food related bacteria in 60 seconds.

Color: Colorless
Fragrance: None
pH Range: 7.0 - 7.5
Dilution: RTU

Available Sizes: 12 / 1 qt

DS 446**Citric Acid Disinfectant RTU**

Broad spectrum hospital disinfectant and multi-surface cleaner the eliminates odor-causing bacteria.

Color: Colorless
Fragrance: None
pH Range: 2.0 - 2.3
Dilution: RTU

Available Sizes: 12 / 1 qt | 4 / 1 gal | 55 gal

DS 464 – NEW!**FACILITY⁺ RTU**

Ready-to-use EPA registered hydrogen peroxide disinfectant, great for kitchens, offices, hotels, schools, and more.

Color: Colorless
Fragrance: None
pH Range: 2.0 - 3.5
Dilution: RTU

Available Sizes: 12 / 1 qt | 4 / 1 gal

DS 470**Lemon Detergent Disinfectant**

Tackles tough, greasy soils, great water damage restoration, combats Athlete's Foot fungus.

Color: Yellow
Fragrance: Lemon
pH Range: 11.5 - 12.0
Dilution: 2 oz / gal

Available Sizes: 4 / 1 gal | 5 gal

DS 473**Hi-Q Disinfectant**

A pH neutral disinfectant for use on finished floors, perfect for mop or cloth application.

Color: Blue
Fragrance: Floral
pH Range: 6.0 - 6.5
Dilution: ½ oz / gal

Available Sizes: 30 / 2 oz packet | 4 / 1 gal

DS 474**Fresh Scent**

Neutral disinfectant effective against MRSA and VRE; cleans floors without harming finish, perfect for mop or cloth application.

Color: Purple
Fragrance: Floral
pH Range: 7.5 - 8.0
Dilution: 2 oz / gal

Available Sizes: 4 / 1 gal | 5 gal

DS 494**Food Service Sanitizer**

Colorless, odorless EPA registered quat-based disinfectant and sanitizer for use in 3-compartment sinks.

Color: Colorless
Fragrance: None
pH Range: 7.0 - 7.5
Dilution: ¼ oz / gal



Available Sizes: 4 / 1 gal | 5 gal

General Cleaning



Maxim® General Cleaning products are formulated with superior raw materials, quality manufacturing processes, and made available through local distribution. Expect great performance and economy from the Maxim® family of general cleaners and degreasers. Choose a concentrate for maximum savings or ready-to-use (RTU) for cleaning efficiency.

DS 456

One Step ADC

Cleans and shines without being the need for abrasive scouring and leaves hard non-porous surfaces smelling fresh.

Color: Pink
Fragrance: Fresh
pH Range: 1.0 - 1.5
Dilution: 4 oz / gal

Available Sizes: 4 / 1 gal

GC 508

Spray & Wipe Cleaner/Degreaser

Non-butyl formula for superior cleaning power without choking fumes, and a pleasant citrus scent.

Color: Light Green
Fragrance: Citrus
pH Range: 11.5 - 12.0
Dilution: RTU

Available Sizes: 12 / 1 qt

GC 509

Mystic Orange

Fast-drying, non-streaking formula that removes grease, fingerprints and food stains.

Color: Orange
Fragrance: Orange
pH Range: 11.5 - 12.0
Dilution: RTU

Available Sizes: 12 / 1 qt

GC 510

Bulldozer

Aggressive, multi-surface spray & wipe formula tackles a wide variety of soils.

Color: Yellow
Fragrance: Lemon
pH Range: 12.0 - 12.5
Dilution: RTU

Available Sizes: 12 / 1 qt | 4 / 1 gal

GC 512

Self-Foaming Cleaner/Degreaser

Multi-purpose cleaner and degreaser with rich, long-lasting foam that clings to vertical surfaces.

Color: Light Green
Fragrance: Citrus
pH Range: 11.5 - 12.0
Dilution: RTU

Available Sizes: 12 / 1 qt

GC 518

Sparkle

Alcohol fortified, non-ammoniated spray & wipe formula for surfaces including glass, stainless steel, and chrome.

Color: Light Blue
Fragrance: Clean
pH Range: 9.5 - 10.0
Dilution: RTU



Available Sizes: 12 / 1 qt | 4 / 1 gal | 5 gal

GC 519

Glass Cleaner

Non-ammoniated, multi-surface foaming aerosol cleaner, for use on glass, plastic and utilities.

Color: n/a
Fragrance: n/a
pH Range: n/a
Dilution: RTU

Available Sizes: 12 / 20 oz

QC 5020**Glass Cleaner Concentrate**

Non-streaking, fast-drying formula with no ammonia or amines.

Color: Dark Blue
Fragrance: Floral
pH Range: 11.5 - 12.0
Dilution: 6 oz / gal

Available Sizes: 6 / 1 qt | 4 / 1 gal

GC 520**Ammoniated Glass & Utility Cleaner**

Non-streaking spray & wipe formula removes grease and grime from glass and surfaces.

Color: Light Blue
Fragrance: Bouquet
pH Range: 10.5 - 11.0
Dilution: RTU

Available Sizes: 12 / 1 qt | 4 / 1 gal

GC 521**Ammoniated Glass Cleaner**

Non-streaking, fast-drying aerosol formula, safe on glass, and desktops.

Color: n/a
Fragrance: n/a
pH Range: n/a
Dilution: RTU

Available Sizes: 12 / 20 oz

GC 530**Maximo Lavender All Purpose Cleaner**

Cleans and deodorizes all hard surfaces. Non-filming, no-rinse, with a lingering lavender fragrance.

Color: Purple
Fragrance: Lavender
pH Range: 7.0 - 7.5
Dilution: 2 oz / gal

Available Sizes: 4 / 1 gal

GC 532**All Purpose Neutral Cleaner**

Highly concentrated synthetic cleaner for finished walls and floors. Free rinsing, leaves no residue.

Color: Pink
Fragrance: Sweet
pH Range: 9.5 - 10.0
Dilution: 2 - 8 oz / gal

Available Sizes: 4 / 1 gal

GC 534**EP Anywhere**

Powerful, versatile all-purpose cleaner with powerful emulsifiers.

Color: Bright Green
Fragrance: Citrus
pH Range: 12.0 - 12.5
Dilution: 1 - 2 oz / gal

Available Sizes: 4 / 1 gal | 5 gal

GC 536**Blue All-Purpose Cleaner**

Highly effective non-butyl cleaner removes grease and oil from all washable surfaces.

Color: Dark Blue
Fragrance: Citrus
pH Range: 11.5 - 12.0
Dilution: 1 - 4 oz / gal

Available Sizes: 4 / 1 gal

GC 538**Choremaster**

Versatile cleaner and deodorizer with multiple application processes. Great for removing soap film.

Color: Yellow
Fragrance: Lemon
pH Range: 12.5 - 12.9
Dilution: 2 - 8 oz / gal

Available Sizes: 12 / 1 qt | 4 / 1 gal

GC 542**Green**

All-purpose pH neutral cleaner and degreaser, spray & wipe or mop on, mop off.

Color: Green
Fragrance: Floral
pH Range: 7.5 - 8.0
Dilution: 2 - 10 oz / gal

Available Sizes: 12 / 1 qt | 4 / 1 gal

GC 546**Concentrated Pine Cleaner**

No-rinse formula cleans and deodorizes floors, walls and toilets with the power of pine oil.

Color: Orange
Fragrance: Pine
pH Range: 10.5 - 11.0
Dilution: 2 - 4 oz / gal

Available Sizes: 4 / 1 gal

Industrial



Maxim® Industrial Maintenance

products are specially formulated to deliver maximum cleaning, whether it's dissolving heavy grease or oil buildups.

GC 560

Big Orange

Fast-acting, with superior grease-cutting properties, great for autoscrubbers.

Color: Orange
Fragrance: Orange
pH Range: 13.0 - 13.5
Dilution: 1 - 8 oz / gal

Available Sizes: 4 / 1 gal | 55 gal

GC 572

Gang Buster

An excellent, non-butyl emulsifier, containing no harmful solvents.

Color: Green
Fragrance: None
pH Range: 13.0 - 13.5
Dilution: Up to 64 oz / gal

Available Sizes: 4 / 1 gal | 5 gal | 55 gal

IM 605

Extra Heavy Duty Concrete Cleaner

Cleaner and pine deodorant; color indicator turns from orange to fluorescent green. Soft metal safe.

Color: Orange
Fragrance: Pine
pH Range: (1%) 12.0 - 12.5
Dilution: 4 - 8 oz / gal

Available Sizes: 50 lb

IM 610

Powerball

Extremely versatile butyl-based cleaner/degreaser, soft metal safe.

Color: Purple
Fragrance: Sassafras
pH Range: 12.5 - 13.0
Dilution: 1 - 20 oz / gal



Available Sizes: 12 / 1 qt | 4 / 1 gal | 5 gal | 55 gal

IM 614

Concentrated All Purpose Cleaner/Degreaser

Powerful butyl-based cleaner with corrosion inhibitors. Safe with autoscrubbers.

Color: Dark Green
Fragrance: Sassafras
pH Range: 12.5 - 13.0
Dilution: 1 - 16 oz / gal

Available Sizes: 4 / 1 gal | 55 gal

IM 620

Workhorse

Industrial grade cleaner, reduces labor on heavy duty cleaning assignments.

Color: Red
Fragrance: Characteristic
pH Range: 13.0 - 13.5
Dilution: 1 - 20 oz / gal

Available Sizes: 4 / 1 gal | 5 gal | 55 gal

IM 628

Thunder & Lightning

A multi-purpose detergent and degreaser for multiple surfaces including fiberglass and vinyl tops.

Color: Clear Yellow
Fragrance: Citrus
pH Range: 12.5 - 13.0
Dilution: 2 - 6 oz / gal

Available Sizes: 4 / 1 gal

IM 640**Citrus 90 d'L**

Versatile d'Limonene-based cleaner, emulsifiable in water.

Color: Clear Orange

Fragrance: Citrus

pH Range: n/a

Dilution: RTU or up to 64 oz / gal

Available Sizes: 12 / 1 qt | 4 / 1 gal

IM 650**Scrubber Juice**

Low-sudsing formula, great for autoscrubbers, attacks heavy soils.

Color: Colorless

Fragrance: Characteristic

pH Range: 12.5 - 13.0

Dilution: 1 - 10 oz / gal

Available Sizes: 5 gal | 55 gal

IM 661**Orange 020 RTU**

Multi-purpose spray & wipe formula with citrus solvents cleans, whitens and brightens.

Color: Colorless

Fragrance: Orange

pH Range: 2.0 - 2.5

Dilution: RTU

Available Sizes: 12 / 1 qt

MAXIM KETTLE CLEAN BREWERY SANITATION SYSTEM

Maxim® Kettle Clean products are specially formulated to clean and sanitize operations in breweries, wineries and distilleries. Whether you're a Bavarian beer law purist or you love your additives, the last thing you want in your beer is wild yeast or bacteria that can create off-flavors or spoilage. Properly washing and sanitizing your tanks is key to the success of your brewery.



IM 670

Causti-Clean Heavy Duty Caustic Cleaner

Sodium/potassium hydroxide blend, water conditioning agents, and low-foam surfactants; ideal for circulation clearing applications.

Color: Dark Brown
Fragrance: Characteristic
pH Range: > 12.5
Dilution: ½ - 10 oz / gal

Available Sizes: 5 gal | 55 gal

IM 672

Acid CIP Acid Circulation Cleaner

Nitric/phosphoric acid blend and low-foam surfactant; for cleaning, descaling and passivation applications.

Color: Pink
Fragrance: Acidic
pH Range: < 2.0
Dilution: 1 - 5 oz / gal

Available Sizes: 5 gal | 55 gal

IM 674

Klor-Foam NP Chlorinated Alkaline Cleaner

Removes greasy, oily, and proteinaceous soils, leaves equipment surfaces clean and residue-free; self-foaming, non-phosphated.

Color: Yellow
Fragrance: Characteristic
pH Range: > 12.0
Dilution: 2 - 8 oz / gal

Available Sizes: 5 gal | 55 gal

IM 678

NCP Kettle Wash

A powdered, soft metal safe alternative to heavy caustic circulation cleaners that is effective at removing a wide variety of soils.

Color: White
Fragrance: None
pH Range: 11.5 - 12.2
Dilution: 1 - 4 oz / gal

Available Sizes: 44 lb case

IM 680

Acid-Foam

A specially blended high foaming acid detergent designed to remove inorganic scale deposits from equipment surfaces.

Color: Reddish Orange
Fragrance: Mild
pH Range: < 1.0
Dilution: 1 - 8 oz / gal

Available Sizes: 5 gal | 55 gal

IM 682

Oxygen Boost

Oxidizing additive to improve the cleaning performance of alkaline and acid cleaners.

Color: Colorless
Fragrance: Pungent
pH Range: < 2.0
Dilution: 0.2 - 1.5 oz / gal

Available Sizes: 5 gal

3597

San-I-Ox Paracetic Acid Sanitizer

EPA registered paracetic acid based sanitizer, effective on bacteria, yeasts and mold; for recirculation or Clean In Place (CIP) applications.

Color: Colorless
Fragrance: Acrid
pH Range: < 1.5
Dilution: 1 - 6 1/10 oz / gal (77 - 469 PPM)

Available Sizes: 4.75 gal

3598

I-O-Safe Iodine Sanitizer

EPA registered Iodophor based broad spectrum hard surface food contact surface sanitizer, safe for circulation through tanks and lines.

Color: Dark Brown
Fragrance: Iodine
pH Range: < 2.0
Dilution: 1 oz / 5 gal (25 PPM)

Available Sizes: 5 gal



MAXIM® Specialty Products are designed for multiple uses spanning a variety of tasks. Products like *Stainless Steel Cleaner* are used in both food service and industrial applications. Insecticides like *Wasp & Hornet Killer* are needed whenever insects are encountered. Digestants like *Banner* not only eat protein, paper, and urine, but are perfect odor eliminators in carpet. Some formulas are designed to better consume organics like animal fats, and are used for metered applications in grease traps.

SP 710

Odor Removing Bio Culture

With non-pathogenic bacteria to consume organic odors and destroy urine salts.

Color: Opaque Purple
Fragrance: Citrus Floral
pH Range: 7.0 - 7.5
Dilution: RTU or up to 64 oz / gal

Available Sizes: 12 / 1 qt | 4 / 1 gal

SP 712

Banner

Bio-active odor neutralizer, with bacterial spores and enzymes, destroys urine salts.

Color: White
Fragrance: Fresh
pH Range: 7.0 - 7.5
Dilution: RTU or up to 32 oz / gal

Available Sizes: 12 / 1 qt | 4 / 1 gal | 5 gal

SP 713

Banish

Bioactive formula quickly digests soils, grease and odors. Great for restrooms, and boat and RV holding tanks.

Color: White
Fragrance: Fresh
pH Range: 7.0 - 7.5
Dilution: RTU

Available Sizes: 12 / 1 qt

SP 720

Alkaline Drain Opener

PVC and metal safe drain opener that attacks organic and cellulosic blockage with no hazardous fumes.

Color: Colorless
Fragrance: None
pH Range: 12.5 - 13.0
Dilution: RTU

Available Sizes: 12 / 1 qt

SP 798

Enzyme Fortified Bacterial Digestant Deodorant

Attacks all organic wastes, eliminating blockages in drains. Safe on plumbing.

Color: Hazy Red
Fragrance: None
pH Range: 7.0 - 7.5
Dilution: RTU

Available Sizes: 4 / 1 gal | 5 gal

5635

Chute & Dumpster

A bio-active odor neutralizer eliminates noticeable odors quickly with no scrubbing.

Color: Green
Fragrance: Citronella
pH Range: 7.0 - 7.5
Dilution: 2 oz / gal

Available Sizes: 4 / 1 qt | 4 / 1 gal

SP 730

Multi-Surface Polish/Cleaner

Siliconized for a beautiful, durable gloss that resists smudges on wood, leather, metal, formica, and more.

Color: Opaque White
Fragrance: Lemon
pH Range: 8.0 - 8.5
Dilution: RTU

Available Sizes: 12 / 1 qt

SP 731

Lemon Oil Furniture Polish

Aerosol with lemon oil, cleans, dusts and protects wood surfaces leaving a high gloss polish.

Color: White
Fragrance: Citrus
pH Range: 10.0 - 11.0
Dilution: RTU

Available Sizes: 12 / 20 oz

SP 735

Oil Based Stainless Steel Cleaner

Oil-based aerosol formula cleans stainless steel and other metals with a protective gloss finish.

Color: Light Yellow
Fragrance: Citrus
pH Range: n/a
Dilution: RTU

Available Sizes: 12 / 20 oz

SP 736

Stillbrite

Cleans, protects and polishes stainless steel, chrome and counter tops.

Color: White
Fragrance: Banana
pH Range: 7.0 - 7.5
Dilution: RTU

Available Sizes: 6 / 1 qt | 4 / 1 gal

SP 737

H2O Stainless Steel Cleaner

Water-based foaming formula clings to vertical surfaces, and cleans and shines with no greasy film.

Color: n/a
Fragrance: n/a
pH Range: n/a
Dilution: RTU

Available Sizes: 12 / 20 oz

SP 785

Fast Kill Residual Roach & Ant Killer

Highly effective against ants, bees, cockroaches, ticks and fleas, beetles, moths, silverfish, and other crawling insects.

Color: White Foam
Fragrance: Characteristic
pH Range: n/a
Dilution: RTU

Available Sizes: 12 / 20 oz

SP 787

Jet Force Wasp & Hornet Killer

Kills wasps and hornets on contact with a 20 foot jet stream, continues to kill with residue.

Color: Colorless
Fragrance: Characteristic
pH Range: n/a
Dilution: RTU

Available Sizes: 12 / 20 oz

5643

Cream Metal Polish

Cleans, brightens, polishes and protects metal, restores natural lustre and coats with a protective seal.

Color: Milky White
Fragrance: Solvent
pH Range: 7.5 - 8.0
Dilution: RTU

Available Sizes: 6 / 1 qt

MAXIM® Transportation products provide the specialized cleaning your situation demands. From cleaners and degreasers to heavy duty truck and trailer washes, you can rely on Maxim® products to keep your whole fleet running smoothly and looking great.

BA 832

Heavy Duty Truck & Trailer Wash

Highly concentrated, controlled alkaline system, removes magnetically bonded soils.

Color: Dark Brown
Fragrance: None
pH Range: 13.0 - 13.5
Dilution: Up to 2 oz / gal

Available Sizes: 5 gal | 55 gal

BA 834

Truck Master T&T

Heavy duty pressure wash removes road film; concentrated for use in hot or cold pressure wash systems.

Color: Dark Brown
Fragrance: None
pH Range: 13.0 - 13.5
Dilution: 1 - 4 oz / gal

Available Sizes: 4 / 1 gal | 55 gal

BA 848

A-Plus Aluminum Brightener

Highly concentrated, fast-acting, acid-based aggressive cleaner removes road film and diesel soot.

Color: Colorless
Fragrance: None
pH Range: <1.0
Dilution: 1 - 25 oz / gal

Available Sizes: 4 / 1 gal | 5 gal | 55 gal

BA 850

Thumbs Up Aluminum Brightener

Super concentrated, free-rinsing formula, removes soot, grime and oxidized film.

Color: Colorless
Fragrance: None
pH Range: <1.0
Dilution: 2 - 39 oz / gal

Available Sizes: 4 / 1 gal | 5 gal | 55 gal





BA 824

Showroom Wash & Wax

High-sudsing, free-rinsing formula for multiple applications.

Color: Pink

Fragrance: Cherry

pH Range: 9.5 - 10.0

Dilution: 1 oz / gal

Available Sizes: 4 / 1 gal | 5 gal | 55 gal

BA 804

Five Star Dressing

Fast-drying formula and one-step process reduces water spotting.

Color: Blue

Fragrance: Watermelon

pH Range: n/a

Dilution: RTU

Available Sizes: 12 / 1 qt | 4 / 1 gal | 5 gal

BA 836

Silicone Surface Renovator

A silicone blend that helps prevent cracking and provides long-term gloss and protection.

Color: White / Opaque

Fragrance: Lemon

pH Range: 7.0 - 7.5

Dilution: RTU

Available Sizes: 4 / 1 gal



MAXIM® Carpet Care products are designed to consistently deliver deep down cleaning, fresh deodorizing, and to help extend your carpet life.

CC 902

Stain-Off

Stain remover and spotter, works on tough food and beverage stains, removes iodine and betadine instantly.

Color: Blue
Fragrance: None
pH Range: 9.4 - 9.9
Dilution: RTU

Available Sizes: 12 / 1 qt

CC 903

Devour - Fresh

Bio-active enzymatic cleaner and deodorizer, effective against a wide variety of stains.

Color: Opaque White
Fragrance: Fresh
pH Range: 6.5 - 7.0
Dilution: RTU or up to 32 oz / gal

Available Sizes: 12 / 1 qt | 4 / 1 gal

CC 907

Frost Bite Gum Remover

Non-chlorinated aerosol solvent, freezes gum fast and quickly releases adhesion.

Color: Colorless
Fragrance: Fruity
pH Range: n/a
Dilution: RTU

Available Sizes: 12 / 7 oz

CC 910

Renew Shampoo

Deep cleans carpet, removing the toughest soils, and dries to a powder for easy cleaning.

Color: Colorless
Fragrance: Clean
pH Range: 9.4 - 9.9
Dilution: 4 oz / gal

Available Sizes: 4 / 1 gal

CC 916

Supercharged

Enzymatically charged, fast-drying formula penetrates, emulsifies and suspends soils.

Color: Colorless
Fragrance: Citrus
pH Range: 6.0 - 6.5
Dilution: Up to 11 oz / gal

Available Sizes: 4 / 1 gal

CC 920

Pre-Treat

Enzyme fortified formula loosens particulate soils and improves efficiency of extraction detergent.

Color: Straw
Fragrance: None
pH Range: 8.5 - 9.0
Dilution: 11 - 13 oz / gal

Available Sizes: 4 / 1 gal



CC 924

XXXTractor

Concentrated, economical cleaner for extraction machines, quickly loosens soils and leaves a pleasant scent.

Color: Straw

Fragrance: Clean

pH Range: 10.5 - 11.0

Dilution: ½ oz / gal

Available Sizes: 4 / 1 gal | 5 gal

CC 950

Silicone Emulsion Defoamer

Destroys foam on contact, eliminates frequent emptying of recovery tanks, helps protect motors and equipment.

Color: White

Fragrance: None

pH Range: 8.0 - 8.5

Dilution: ½ oz / gal

Available Sizes: 4 / 1 gal

CC 940

Carpet Extraction Rinse

Neutralizes excess alkalinity, effective on coffee and tea stains and for general debrowning.

Color: Yellow-Brown

Fragrance: None

pH Range: 1.5 - 2.0

Dilution: 1 oz / gal

Available Sizes: 4 / 1 gal

Kick the Bucket!

The flexible option to replace rigid buckets.

FLEXMAX™ PACKAGING



Products in FlexMax™ Packaging are easy to use, convenient to store, and cost efficient to ship. They're durable, lightweight, collapse down flat.

FlexMax™ Packaging

The flexible option to replace bulky containers.

- ✓ Reduces waste
- ✓ Reduces costs
- ✓ Uses up to 38% less storage space
- ✓ Recyclable

FlexMax™ Packaging replaces bulky, clumsy buckets with a container that empties completely and collapses to nothing. Yet it's still durable, and portable thanks to built-in handles.

Floor Care



MAXIM® Floor Care programs provide a nice reflection on you and an outstanding appearance for your facility, combining the finest products with your equipment and available labor hours for the optimum in gloss, durability and long lasting shine.

Maintenance Program Equipment

1



Stripping and Top Scrubbing

175-300 RPM Swing Buffer

2



Periodic Maintenance

1000-1500 RPM Burnisher

3



High Speed Burnishing

1500 + RPM Burnisher

FLOOR FINISH SELECTOR

PRODUCT CODE	KEY CHARACTERISTICS			BEST FOR
	%	OFF-THE-MOP	MAINTENANCE	
FC 1150: SEMI-PERMANENT ACRYLIC FLOOR SEALER	18%	Good	Low	Schools, Office, Hospitals, Supermarkets, Retail Centers, Institutional
FC 1218: 18% HIGH GLOSS FLOOR FINISH	18%	Good	Medium	Schools, Office, Hospitals
FC 1225: ULTRASHIELD 25	25%	Better	Medium	Schools, Airports, Office, Hospitals
FC 1316: PIZZAZZ	18%	Better	Low	Schools, Airports, Office, Hospitals
FC 1320: KNOCKOUT	20%	Best	Low	Schools, Airports, Office, Hospitals
FC 1518: 18% HIGH GLOSS SEALER / FINISH	18%	Good	High	Contract Cleaners
FC 1524: ULTRASHIELD 22 UF	22%	Best	High	Supermarkets, Retail Centers, Institutional
FC 1525: ULTRASHIELD 28	25%	Best	High	Supermarkets, Retail Centers, Institutional
FC 1575: ULTIMATE	25%	Best	High	Supermarkets, Retail Centers, Institutional
FC 1630: HARDCOTE	23%	Good	Low	Supermarkets, Retail Centers

FC 1104

Annihilator

Aggressive stripping action, emulsifies multiple coats. Low odor, non-ammoniated.

Color: Colorless
Fragrance: None
pH Range: 13.5 - 14.0
Dilution: 11 - 64 oz / gal

1

Available Sizes: 4 / 1 gal | 2/2.5 gal | 5 gal | 55 gal

FC 1106

Non-Ammoniated Floor Stripper

Aggressive stripping action, emulsifies multiple coats. Low odor, non-ammoniated.

Color: Colorless
Fragrance: None
pH Range: >13.0
Dilution: 26 - 64 oz / gal

1

Available Sizes: 4 / 1 gal | 2/2.5 gal | 5 gal | 55 gal

FC 1107

Self-Foaming Baseboard Stripper

Foaming aerosol clings to baseboards and quickly strips tough build-ups. Great for hard-to-reach areas.

Color: Light Brown / Tan
Fragrance: Alcohol / Solvent
pH Range: 11.5 - 12.5
Dilution: RTU

Available Sizes: 12 / 18 oz

FC 1108

Action Stripper

Strips multiple layers of finish and liquefies burnished films, with no harsh ammonia odor.

Color: Colorless
Fragrance: None
pH Range: 13.5 - 14.0
Dilution: 13 - 32 oz / gal

1

Available Sizes: 4 / 1 gal | 2/2.5 gal | 5 gal | 55 gal

FC 1125

Mega Stripper

Extreme stripping power, liquefies burnished films. Use less, do more.

Color: Colorless
Fragrance: Lemon
pH Range: 12.0 - 12.5
Dilution: 11 - 32 oz / gal

1

Available Sizes: 4 / 1 gal | 2/2.5 gal | 5 gal | 55 gal

Floor Finishes and Sealers

FC 1150

Semi-Permanent Acrylic Floor Sealer

Extremely durable and economical; low viscosity, high coverage. Compatible with all types of acrylic finish.

Color: White
Fragrance: Characteristic
pH Range: 8.0 - 8.5
Dilution: RTU

1

2

Available Sizes: 4 / 1 gal | 2/2.5 gal | 5 gal | 55 gal

FC 1218

18% High Gloss Floor Finish

Easy, fast application and buffs to a high shine. Low maintenance programs.

Color: White
Fragrance: Characteristic
pH Range: 8.0 - 8.5
Dilution: RTU

1

2

Available Sizes: 4 / 1 gal | 2/2.5 gal | 5 gal | 55 gal

FC 1518

18% High Gloss Sealer/Finish

Unique polymer blend seals and finishes in one step for a tough, durable finish.

Color: White

Fragrance: Characteristic

pH Range: 8.0 - 8.5

Dilution: RTU

1

2

3

Available Sizes: 4 / 1 gal | 2/2.5 gal | 5 gal | 55 gal

FC 1524

Ultrashield 22 UF

Long-lasting shine for high traffic areas, great with propane burnishing equipment.

Color: White

Fragrance: Characteristic

pH Range: 8.0 - 8.5

Dilution: RTU

Available Sizes: 4 / 1 gal | 2/2.5 gal | 5 gal | 55 gal

FC 1525

Ultrashield 28 UF

The ultimate in appearance and durability, easy to apply, saves time, labor and expense.

Color: White

Fragrance: Characteristic

pH Range: 8.0 - 8.5

Dilution: RTU

1

2

3

Available Sizes: 4 / 1 gal | 2/2.5 gal | 5 gal | 55 gal

FC 1575

Ultimate

Latest polymer technology for all maintenance programs, extremely durable and easy to repair.

Color: White

Fragrance: Characteristic

pH Range: 8.0 - 8.5

Dilution: RTU

1

2

3

Available Sizes: 4 / 1 gal | 5 gal | 55 gal

FC 1630

Hardcote

Water-based, easy to apply sealant for concrete, brick, slate, quarry, synthetic sports flooring, and tile.

Color: White

Fragrance: Characteristic

pH Range: 8.0 - 8.5

Dilution: RTU

Available Sizes: 5 gal | 55 gal

FC 1225

Ultrashield 25

Builds gloss quickly, requires fewer coats and less labor. For low or high speed machines.

Color: White

Fragrance: Characteristic

pH Range: 8.0 - 8.5

Dilution: RTU

1

2

Available Sizes: 4 / 1 gal | 2/2.5 gal | 5 gal | 55 gal

FC 1316

Pizzazz

High gloss and great durability, low odor, and withstands high traffic.

Color: White

Fragrance: Characteristic

pH Range: 8.5 - 9.0

Dilution: RTU

1

2

Available Sizes: 4 / 1 gal | 2/2.5 gal | 5 gal | 55 gal

FC 1320

Knockout

Utilizes latest polymer technology for super off-the-mop gloss in areas where minimal maintenance is desired.

Color: White

Fragrance: Characteristic

pH Range: 8.0 - 8.5

Dilution: RTU

1

2

Available Sizes: 4 / 1 gal | 2/2.5 gal | 5 gal | 55 gal

FC 1234

Mega Spray

Removes scuffs and black marks; for low and high speed equipment; pleasant lemon fragrance.

Color: White
Fragrance: Lemon
pH Range: 7.5 - 8.0
Dilution: RTU

1
2

Available Sizes: 12 / 1 qt | 4 / 1 gal

FC 1436

Restore Shine

Mop on, buff off formula repairs and replenishes floor surfaces, and increases slip resistance.

Color: White
Fragrance: Characteristic
pH Range: 7.5 - 8.0
Dilution: 1 - 2 oz / gal

2
3

Available Sizes: 4 / 1 gal | 55 gal

FC 1805

Ultra Shine All

2-in-1 daily damp mop adds a protective shine to tile, rubber and resilient floors.

Color: Amber
Fragrance: Sassafras
pH Range: 8.0 - 8.5
Dilution: 1 - 4 oz / gal

Available Sizes: 4 / 1 gal | 55 gal

FC 1800

Mega Mop

Film-free, no-rinse formula, leaves areas smelling clean. For use in auto scrubbers and mop buckets.

Color: Yellow
Fragrance: Lemon
pH Range: 8.0 - 8.5
Dilution: 2 - 6 oz / gal

Available Sizes: 4 / 1 gal | 5 gal | 55 gal

FC 1806

Glide Neutral Cleaner

Film-free, non-dulling neutral damp mop suitable for use in non-food processing areas.

Color: Red
Fragrance: Floral
pH Range: 7.5 - 8.0
Dilution: 1 - 4 oz / gal

Available Sizes: 4 / 1 gal | 55 gal

FC 1850

Deep Scrub Floor Cleaner

Non-filming, pH optimized for top scrub and recoat applications. Removes surface soils and scratches.

Color: Blue
Fragrance: Fresh
pH Range: 10.5 - 11.0
Dilution: Up to 16 oz / gal

1

Available Sizes: 4 / 1 gal | 55 gal

FC 1815

Nice

Non-dulling acidic damp mop, neutralizes alkaline and salt residues.

Color: Green
Fragrance: Lime
pH Range: 2.5 - 3.0
Dilution: 1 - 3 oz / gal

Available Sizes: 4 / 1 gal | 55 gal

FC 1920

Water-Based Dust Mop Treatment

Non-staining formula improves dust mop efficiency and reduces airborne dust.

Color: Blue
Fragrance: Sassafras
pH Range: 9.5 - 10.0
Dilution: RTU or 64 oz / gal

Available Sizes: 12 / 1 qt | 4 / 1 gal

Food Service



MAXIM® Food Service cleaning products keep your operation clean and sanitary, whether you run a full service restaurant, an institutional kitchen, a convenience store or a supermarket.

Look for the Atlanta Kashruth Commission logo on our Certified Kosher products.

KS 2098

Pink Value Manual Dishwashing Detergent

High sudsing, grease-cutting formula that's mild to the skin, with a pleasant herbal fragrance.

Color: Pink
Fragrance: Herbal
pH Range: 8.0 - 8.5
Dilution: 1 oz / 4 gal

Available Sizes: 4 / 1 gal | 5 gal

KS 2202

Lemon Fresh Manual Dishwashing Detergent

Powerful grease-cutting agents, effective in all water conditions. Thick, rich suds and lemon scent.

Color: Yellow
Fragrance: Lemon
pH Range: 8.0 - 8.5
Dilution: 1 oz / 8 gal

Available Sizes: 12 / 1 qt | 4 / 1 gal | 5 gal

KS 2208

Emerald Green Dish Detergent

High-foaming, grease-cutting formula, mild to skin, with a pleasant herbal bouquet.

Color: Emerald
Fragrance: Herbal Bouquet
pH Range: 8.0 - 8.5
Dilution: 1 oz / 8 gal



Available Sizes: 4 / 1 gal

KS 2210

Sudz

Thick, rich, long-lasting suds, mild to skin, and removes heavy food, grease and oil.

Color: Blue
Fragrance: Herbal
pH Range: 8.0 - 8.5
Dilution: 1 oz / 6 gal

Available Sizes: 4 / 1 gal | 5 gal

KS 2211

Blue Pot & Pan

Pleasantly scented, concentrated formula that is kind to skin, and removes dried-on-food, grease and other tough to remove substances.

Color: Blue
Fragrance: Mild
pH Range: 8.8 - 9.3
Dilution: 1 oz / 6 gal

Available Sizes: 4 / 1 gal

KS 2325

Mineral Oil

Food grade mineral oil. Meets the following product standards: 21 CFR 172.878(a) and 21 CFR 172.878(c).

Color: Clear
Fragrance: None
pH Range: n/a
Dilution: RTU

Available Sizes: 12 / 1 qt

KS 2330

Fruit & Veggie Wash

Sanitize the surfaces of processed fruits and vegetables and reduce spoilage microorganisms.

Color: Turquoise
Fragrance: Characteristic
pH Range: < 1.5
Dilution: 1:128

Available Sizes: 6 / 1 qt | 2 / 3 L

KS 2450**Non-Butyl Heavy Foaming Degreaser**

A powerful alkaline degreaser concentrate that can be applied by trigger sprayer, mop or pressure sprayer.

Color: Red
 Fragrance: None
 pH Range: 12.5 - 13.0
 Dilution: 2 - 6 oz / gal



Available Sizes: 4 / 1 gal

KS 2500**Oven-N-Grill**

Clinging formula removes grease, oil, and carbonized soils without noxious fumes.

Color: Brown
 Fragrance: Citrus
 pH Range: 13.5 - 14.0
 Dilution: RTU



Available Sizes: 12 / 1 qt | 4 / 1 gal

KS 2555**Oven & Grill Cleaner**

Fast-acting aerosol formula cleans with less effort. Great for outdoor barbecue grills.

Color: Colorless
 Fragrance: Characteristic
 pH Range: 13.0 - 14.0
 Dilution: RTU

Available Sizes: 6 / 18 oz

KS 2560**Hi-Temp Grill Cleaner**

A powerful non-corrosive formula that removes carbon build-up, grease, and oil from grill surfaces.

Color: Amber
 Fragrance: None
 pH Range: > 13.0
 Dilution: RTU

Available Sizes: 6 / 1 qt

KS 2600**Traction**

A highly-concentrated formula to remove heavy grease, soap scum, grime and mineral deposits from quarry tile.

Color: Dark Pink
 Fragrance: None
 pH Range: < 2
 Dilution: RTU or 3 oz / gal

Available Sizes: 4 / 1 gal

**KS 2620****Mop & Go Traction**

A biologically-based cleaner that naturally digests grease and organic soils from quarry and other hard tile floors.

Color: Green
 Fragrance: None
 pH Range: 5.5 - 6.0
 Dilution: 1 - 4 oz / gal

Available Sizes: 4 / 1 gal

KS 2711**Fresh Fryer**

An aggressive grease-cutting formula in a super-concentrated powder, effective in all water conditions.

Color: Blue
 Fragrance: None
 pH Range: (1%) 12.5 - 13.0
 Dilution: Up to 8 oz / gal



Available Sizes: 1 / 8 lb

KS 2855**Carbon Soak**

A high alkaline carbon build-up concentrate for soaking aluminum and stainless steel pans and sheet trays.

Color: Colorless
 Fragrance: None
 pH Range: 12.5 - 13.0
 Dilution: 10 - 16 oz / gal

Available Sizes: 4 / 1 gal | 5 gal

Machine Warewash



MAXIM® Machine WareWash

products are formulated for commercial kitchens of all sizes. From chlorinated dish detergents to heavy duty delimers, Maxim® repeatedly deliver superior results to ensure your dishes and kitchen utensils sparkle.

MW 3111

Powdered Presoak & Detarnisher

Buffered alkaline system loosens dried-on soils and detarnishes silverware.

Color: Light Blue

Fragrance: None

pH Range: (1%) 11.5 - 12.0

Dilution: 1 oz / gal



Available Sizes: 4 / 8 lb

MW 3115

Liquid Enzyme Presoak

Highly concentrated, enzyme fortified presoak, highly effective on protein soils.

Color: Blue-Green

Fragrance: None

pH Range: 10.0 - 10.5

Dilution: 1 oz / gal

Available Sizes: 2 / 1 gal

MW 3144

Plastic & China Destainer

Removes stubborn organic stains. Fortified with oxygen bleach, effective in temperatures as low as 80° F.

Color: Blue

Fragrance: Fresh

pH Range: (1%) 10.5 - 11.0

Dilution: ½ - 2 oz / gal

Available Sizes: 1 / 8 lb

MW 3227

Best Dish Encaps

Chlorinated, low-foaming surfactant detergent removes all types of food soils in automatic dishmachines.

Color: White

Fragrance: Characteristic

pH Range: (1%) 12.0 - 12.5

Dilution: ¼ - ½ oz / 10 gal

Available Sizes: 4 / 8 lb

MW 3229

Encapsulated Metal Safe Dishmachine Detergent

Highly alkaline, chlorinated detergent, excellent stain remover in all water conditions.

Color: White

Fragrance: Characteristic

pH Range: (1%) 12.5 - 13.0

Dilution: ¼ - ½ oz / 10 gal

Available Sizes: 4 / 8 lb

MW 3230

Liquid Metal Safe Dishmachine Detergent

Soft metal safe and spot-free rinsing.

Color: Colorless

Fragrance: Characteristic

pH Range: 13.5 - 14.0

Dilution: 1.3 oz / 10 gal



Available Sizes: 5 gal

MW 3234

Best Dish All Temp

Formulated for low temperatures, with builders and sequesterants to remove stains and protein soils.

Color: Red

Fragrance: None

pH Range: 13.5 - 14.0

Dilution: ¼ - ½ oz / 10 gal

Available Sizes: 4 / 1 gal | 5 gal

**MW 3340****High Temp Rinse Additive**

Low foam rinse aid surfactant with no silicone defoamers, eliminates spotting, filming and streaking.

Color: Green
Fragrance: None
pH Range: 3.0 - 3.5
Dilution: ½ oz / 10 gal

Available Sizes: 4 / 1 gal | 5 gal

MW 3454**Lime-X**

Dual acid blend removes lime, scale and mineral deposits to keep tubing jets and hoses free of buildup.

Color: Green
Fragrance: Characteristic
pH Range: < 1.0
Dilution: Up to 4 oz / gal

Available Sizes: 4 / 1 gal

MW 3344**Acidic Rinse Additive**

Dissolves scale and lime deposits in both low and high temperature dishmachines, makes glassware sparkle.

Color: Blue
Fragrance: None
pH Range: 3.0 - 3.5
Dilution: ½ oz / 10 gal



Available Sizes: 4 / 1 gal

MW 3455**Multi-Purpose Delimer Descaler**

Phosphoric Acid delimer cleans surfaces, eliminates spotting, and removes hard water deposits.

Color: Green
Fragrance: None
pH Range: < 1.0
Dilution: Up to 4 oz / gal

Available Sizes: 4 / 1 gal

MW 3346**Best Rinse Lo-Temp**

For use in low-temperature dishmachines. Effective in all water conditions with improved efficiency in hard water.

Color: Blue
Fragrance: None
pH Range: 7.5 - 8.0
Dilution: ½ oz / 10 gal

Available Sizes: 4 / 1 gal | 5 gal

MW 3595**Super San Plus**

Kills harmful bacteria and eliminates need for high-temp sanitizing. Aids in removing tough residues.

Color: Straw
Fragrance: Chlorine
pH Range: 12.5 - 13.0
Dilution: 5 oz / 48 gal

Available Sizes: 4 / 1 gal | 5 gal



MAXIM® Laundry products, from powders to liquids, bleaches to softeners, combine the latest in chemical research with the outstanding cleaning performance needed to take on heavy soil loads on all types of fabrics.

LP 4099

Lemon Laundry Detergent

Aggressive surfactant system, effective in all water conditions, with anti-soil redeposition agents.

Color: White
Fragrance: Lemon
pH Range: (1%) 10.75 - 11.25
Dilution: 4 - 8 oz / 50 lb fabric

Available Sizes: 50 lb pail | 50 lb box

LP 4101

Deluxe Lemon Laundry Detergent

Phosphate-free, broad-spectrum cleaning, with optical brighteners.

Color: Yellow
Fragrance: Lemon
pH Range: (1%) 11.5 - 12.0
Dilution: 6 - 8 oz / 50 lb fabric

Available Sizes: 50 lb pail | 50 lb box

LP 4105

Ultra Premium

Commercial strength laundry detergent, with optical brighteners and anti-soil redeposition agents.

Color: White
Fragrance: Fresh
pH Range: (1%) 11.0 - 11.5
Dilution: 3 - 4 oz / 50 lb fabric

Available Sizes: 50 lb box

LP 4115

Heavy Duty Built Phosphate Detergent

Surfactants, alkalis, and sequesterants effective in all water conditions. Eliminates use of duplicate products.

Color: White to Brown
Fragrance: None
pH Range: (1%) 12.5 - 13.0
Dilution: 3 - 5 oz / 50 lb fabric

Available Sizes: 50 lb box

LP 4128

Liquid Laundry Detergent

Quickly lifts and suspends soils, leaving clothes smelling clean with no alkaline residue.

Color: Blue
Fragrance: Fresh
pH Range: 8.0 - 8.5
Dilution: 2 - 4 oz / 50 lb fabric

Available Sizes: 4 / 1 gal | 5 gal | 15 gal

LP 4130

Built Laundry Detergent

Aggressive surfactant system for automatic dispensing systems. Eliminates need for break or builder.

Color: Amber
Fragrance: Floral
pH Range: 13.5 - 14.0
Dilution: 3 - 7 oz / 50 lb fabric

Available Sizes: 5 gal | 15 gal

LP 4135

Ultra Built Laundry Detergent

Cleans in low use concentrations, in hot or cold water. Eliminates the need for a break or builder.

Color: Amber
Fragrance: Lemon-Lime
pH Range: 13.5 - 14.0
Dilution: 3 - 7 oz / 50 lb fabric

Available Sizes: 5 gal | 15 gal

LP 4141

Surge

Bio-active laundry detergent, enzyme fortified to remove blood, grass, and food stains.

Color: Blue
Fragrance: Fresh
pH Range: 8.5 - 9.0
Dilution: 1 - 2 oz / 50 lb fabric

Available Sizes: 5 gal

LP 4307

All Fabric Bleach

Oxygen bleaching action is effective in all temperatures, and safe on most fabrics and colors.

Color: Blue

Fragrance: Fresh

pH Range: (1%) 10.5-11.0

Dilution: 2 - 8 oz / 50 lb fabric

Available Sizes: 50 lb box

LP 4306

Laundry Bleach

6% chlorine bleach powder oxidizes organic residues for excellent stain removal and optimum bleaching potential.

Color: White

Fragrance: Characteristic

pH Range: (1%) 7.0-7.5

Dilution: ¾ - 3 oz / 50 lb fabric

Available Sizes: 50 lb pail | 50 lb box

LP 4308

Laundry Destainer

Ensures optimum bleaching, helps remove proteins and starches to aid in stain removal.

Color: Straw

Fragrance: Chlorine

pH Range: 12.0 - 12.5

Dilution: ¾ - 1½ oz / 50 lb fabric

Available Sizes: 5 gal | 15 gal



LP 4802

Laundry Spotter

Fast-acting, effective against a wide variety of soils, and does not form rings.

Color: Light Blue

Fragrance: None

pH Range: 10.0 - 10.5

Dilution: RTU

Available Sizes: 4 / 1 gal

LP 4320

All Fabric Bleach

Non-chlorine liquid bleach for use on colored and synthetic fabrics; leaves no harmful residue.

Color: Colorless

Fragrance: None

pH Range: 5.0 - 5.5

Dilution: 1½ - 2½ oz / 50 lb fabric

Available Sizes: 5 gal | 15 gal



LP 4208

Liquid Laundry Builder

Highly alkaline break / builder creates optimum washing conditions to remove grease, oil and protein.

Color: Colorless

Fragrance: Bland

pH Range: 13.5 - 14.0

Dilution: 2 - 4 oz / 50 lb fabric

Available Sizes: 5 gal

LP 4520

Laundry Softener

Suitable for synthetic fabrics and cotton, giving fabric a soft, smooth feel and fresh, clean scent.

Color: Blue

Fragrance: Floral

pH Range: 4.5 - 5.0

Dilution: ½ - 1 oz / 50 lb fabric

Available Sizes: 4 / 1 gal | 5 gal | 15 gal

LP 4404

Rust Removing Sour

Neutralizes alkaline residues, dissolves and suspends iron stains, and helps prevent graying and fading.

Color: Colorless

Fragrance: None

pH Range: 1.0 - 1.5

Dilution: ½ - 1 oz / 50 lb fabric

Available Sizes: 5 gal | 15 gal

LP 4522

Ultra Sour-Soft

Softener and neutralizer, brightens white and colors, and speeds extraction and drying.

Color: Blue

Fragrance: Floral

pH Range: 1.5 - 2.0

Dilution: ½ - 1 oz / 50 lb fabric

Available Sizes: 5 gal | 15 gal

MAXIM® Convenience Packets are pre-measured for the right amount of product with every use. These products are designed for simple and easy-to-use portion and inventory control. With products for floor care, laundry, and dishes, including items from our **Nattura®** line of environmentally responsible choices, Maxim® convenience packets are ideal for hotels, condos, resorts, bars and restaurants, and other high-turnover industries.

DS 473

Hi-Q Disinfectant

Pre-measured hospital grade neutral pH disinfectant, in an easy dispenser box.

Color: Blue
Fragrance: Floral
pH Range: 6.0 - 6.5
Dilution: 1 packet / 4 gal

Available Sizes: 30 / 2 oz

KS 2604

Fresh Traction Wash

Powerful 2-in-1 mop bucket solution, fresh enzyme fortified digester and degreaser.

Color: Green
Fragrance: None
pH Range: 7.0 - 7.5
Dilution: 1 packet / 4 gal

Available Sizes: 30 / 2.6 oz

FC 1801

Mega Mop Ultra

Concentrated damp mop cleaner that leaves no residue. One packet per mop bucket.

Color: Yellow
Fragrance: Orange
pH Range: 8.0 - 8.5
Dilution: 1 packet / 4 gal

Available Sizes: 30 / 2 oz

Nattura® 9636

UL 2792

Eco Traction Wash

Improves slip resistance and cleans grout lines, with continuous cleaning whenever damp.

Color: Green
Fragrance: None
pH Range: 7.5 - 8.0
Dilution: 1 packet / 4 gal

Available Sizes: 30 / 2.6 oz



Laundry

HP 4107

Wash

Single-use laundry detergent packet, works in all temperatures and leaves clothes smelling fresh.

Color: White
Fragrance: Fresh
pH Range: (1%) 10.5 - 11.0
Dilution: 1 packet / load

Available Sizes: 140 / 3.75 oz

Nattura® 9574

UL 2776

Ecodetergent

Phosphate-free, high-efficiency laundry detergent in a pre-measured convenience packet.

Color: White
Fragrance: None
pH Range: (1%) 10.0 - 10.5
Dilution: 1 packet / load

Available Sizes: 156 / 2 oz

HP 3221

Dish Ultra

Great rinsing and sheeting action in residential style dishwashers, one packet per load.

Color: White
Fragrance: Characteristic
pH Range: (1%) 11.5 - 12.0
Dilution: 1 packet / load

Available Sizes: 100 / 1.4 oz | 200 / 1.4 oz

HP 3236

Dish Aqua

Dish detergent for residential style dishwashers, one packet per load. Effective in all water types.

Color: Blue-Green
Fragrance: Clean
pH Range: (1%) 10.0 - 10.5
Dilution: 1 packet / load

Available Sizes: 200 / 1.4 oz

HP 3237

OxygenDish

Peroxy-based detergent for residential style dishwashers; one packet per load.

Color: Blue-Green
Fragrance: Clean
pH Range: (1%) 10.5 - 11.0
Dilution: 1 packet / load

Available Sizes: 100 / 1.4 oz

Nattura® 9592

EcoDish

Effective, non-filming dishwashing powder, pre-measured at one packet per load, works in residential-style dishwashers.

Color: White
Fragrance: None
pH Range: (1%) 10.0 - 10.5
Dilution: 1 packet / load

Available Sizes: 200 / 1.4 oz

BG 2320

BG-25 Bar Glass Cleaner

Electric brush detergent that leaves glasses clean and spot-free. Removes even tough lipstick smudges.

Color: White
Fragrance: None
pH Range: (1%) 10.0 - 10.5
Dilution: 1 packet / 3 gal

Available Sizes: 200 / 0.5 oz

HP 2206

Ultimate Sink

High-foaming grease-fighting manual dish soap, ideal for hotels, condos and timeshares.

Color: Emerald Green
Fragrance: Herbal Bouquet
pH Range: 8.0 - 8.5
Dilution: 1 oz / 4 gal

Available Sizes: 90 / 3.5 oz

Nattura® 9582

SC

Enviro Sink

Manual dish soap with long-lasting suds and spot-free rinsing, ideal for hotels and condos.

Color: Yellow
Fragrance: Fruity
pH Range: 6.5 - 7.0
Dilution: 1 oz / 4 gal

Available Sizes: 90 / 3.5 oz

KS 2715

Lime Scale Remover

Removes lime build-up with a combination of citric acid and phosphates.

Color: White
Fragrance: None
pH Range: (1%) 2.5 - 3.0
Dilution: 1 - 2 packets / gal

Available Sizes: 48 / 2 oz

DS 425

CL-25 Alkaline Sanitizer

Rinse-free chlorinated sanitizer for use in food service equipment and sinks.

Color: White
Fragrance: Characteristic
pH Range: (1%) 9.0 - 9.5
Dilution: 1 packet / 2½ gal

Available Sizes: 200 / 0.25 oz

BG 2321

Bar Glass Cleaner Kit

Cleans your glassware in two steps, removing lipstick and leaving glasses sparkling clean and sanitized.

KIT INCLUDES 30 EACH OF:

- BG-25 Bar Glass Cleaner ½ oz. packets
- CL-25 Alkaline Sanitizer ¼ oz. packets
- Chlorine Test Strips

Available Sizes: 1 Each Kit



EDS™ Easy Dilution Solution from Maxim® is a totally portable, cabinet-free dilution control system. The 3 liter bottles hook directly to a hose and feature a simple button that changes from mop bucket to bottle fill. “Easy Squeeze” quart bottles measure the correct amount of solution right in the cap. Bottles are lightweight, easy to carry, and recyclable.

0441

AFBC Restroom Cleaner

Hospital grade acid free restroom cleaner that kills germs and odor-causing bacteria.

Color: Blue
Fragrance: Fresh
pH Range: 10.0 - 12.0
Dilution: 1 oz / gal (pre-set)

Available Sizes: 6 / 1 qt | 2 / 3 L

0462

FACILITY+ One-Step Disinfectant Cleaner and Deodorant

EPA registered hydrogen peroxide disinfectant, great for kitchens, offices, hotels, schools, and more.

Color: Colorless
Fragrance: None
pH Range: < 1.0
Dilution: 1 - 2 oz / gal (pre-set)

Available Sizes: 6 / 1 qt | 2 / 3 L

6517

Hi-Q Disinfectant

Phosphate-free, pH neutral formula that cleans, disinfects and deodorizes.

Color: Blue
Fragrance: Floral
pH Range: 6.0 - 6.5
Dilution: ½ oz / gal (pre-set)

Available Sizes: 6 / 1 qt | 2 / 3 L

9513

UL 2759

Maximo Lavender All Purpose Cleaner

Deodorizing neutral cleaner for all hard surfaces - floors, walls, restroom surfaces and wherever light duty daily cleaning is performed.

Color: Purple
Fragrance: Lavender
pH Range: 7.5 - 8.0
Dilution: 1 oz / gal (pre-set)

Available Sizes: 6 / 1 qt | 2 / 3 L

9523

UL 2759

Powerball

Mild pH cleaner degreaser, with no fragrances, phosphates, chlorinated or petroleum solvents, or flammable ingredients.

Color: Green
Fragrance: None Added
pH Range: 11.0 - 11.5
Dilution: 1 oz / gal (pre-set)

Available Sizes: 6 / 1 qt | 2 / 3 L

9533

UL 2759

Sparkle Glass Cleaner

Streak-free cleaner for glass, metal, plastic, fiberglass, and other hard surfaces, V.O.C. free, with no ammonia, solvents or fragrances.

Color: Dark Blue
Fragrance: None
pH Range: 7.5 - 8.0
Dilution: 1 oz / gal (pre-set)

Available Sizes: 6 / 1 qt | 2 / 3 L

9565

UL 2759

Super Mega Mop G

Rinse-free neutral damp mop concentrate, ideal for autoscrubbers, maintains high gloss acrylic floor finishes without a dulling film.

Color: Red
Fragrance: Tangy Fruit
pH Range: 7.5 - 8.0
Dilution: ½ oz / gal (pre-set)

Available Sizes: 6 / 1 qt | 2 / 3 L

Dilution Control



005070-EA
Portable

005092-EA
Cabinet

MAXIM® Chemical Management System offers the maximum of safety, simplicity, versatility, and economy in a convenient wall mounted concentrate dispensing system. Simplified product choices and push button filling of qt bottles, mop buckets or autoscrubbers. Color-coded and numbered for easy identification, and including many EPA registered disinfectant formulas, as well as environmentally responsible choices by **Nattura®**.

9039

Glass Cleaner

Concentrated, non-ammoniated, versatile glass and surface cleaner.

Color: Blue
Fragrance: None
pH Range: 11.0 - 11.5
Dilution: 2 oz / gal

1

Available Sizes: 4 / 64 oz

9041

All-Purpose Cleaner & Deodorizer

Special blend of chelating agents to remove grease, oil and grime in all water conditions.

Color: Pink
Fragrance: Lemon-Lime
pH Range: 11.5 - 12.0
Dilution: 2 oz / gal

2

Available Sizes: 4 / 64 oz

6504

Damp Mop

Neutral damp mop cleaner with chelating agents to help suspend solids and salts. Leaves no residue.

Color: Yellow
Fragrance: Orange
pH Range: 8.0 - 8.5
Dilution: ½ oz / gal

4

Available Sizes: 4 / 64 oz

9038

Capri Ultra

Ultra-concentrated odor counteractant, with increased active ingredients to completely eliminate odors.

Color: Light Yellow
Fragrance: Orange
pH Range: 6.5 - 7.0
Dilution: 4 oz / gal

5

Available Sizes: 4 / 64 oz

6508

Mop & Go Traction

A daily floor cleaner that cleans and deodorizes, brightens grout lines, and helps maintain drains.

Color: Green
Fragrance: None
pH Range: 5.5 - 6.0
Dilution: 1 oz / gal

8

Available Sizes: 4 / 64 oz

6516

Non-Acid Bathroom Disinfectant Cleaner

A hospital-grade, one-step disinfectant cleaner that inhibits the growth of mold and mildew.

Color: Purple
Fragrance: Floral
pH Range: 11.0 - 11.5
Dilution: 2 oz / gal

16

Available Sizes: 4 / 64 oz

6517

Hi-Q Disinfectant

Phosphate-free, pH neutral formula that cleans, disinfects and deodorizes.

Color: Blue
Fragrance: Floral
pH Range: 6.0 - 6.5
Dilution: ½ oz / gal

17

Available Sizes: 6 / 1 qt | 2 / 3 L | 4 / 64 oz

Nattura® 9021**UL 2759****Non-Corrosive Bath & Bowl Cleaner/Descaler**

The environmentally responsible choice for removing rust deposits. Non-butyl, super concentrated.

Color: Yellow
Fragrance: None
pH Range: 0.5 - 1.0
Dilution: 6 oz / gal

21

Available Sizes: 4 / 64 oz

Nattura® 9564**UL 2759****Mega Mop G**

A rinse-free neutral damp mop formula that maintains high gloss acrylic finishes, saving time and labor.

Color: Red
Fragrance: Tangy Fruit
pH Range: 8.0 - 8.5
Dilution: 2 oz / gal

31

Available Sizes: 4 / 64 oz

Nattura® 9622**UL 2759****Orange 020 Natural**

Peroxide degreaser, ideal for floors and carpets, that cleans, whitens and brightens.

Color: Colorless
Fragrance: Orange
pH Range: 5.5 - 6.0
Dilution: 2 oz / gal

32

Available Sizes: 4 / 64 oz

Nattura® 9565**UL 2759****Super Mega Mop G**

Ideal for autoscrubbers, rinse-free and leaves no dulling film.

Color: Red
Fragrance: Tangy Fruit
pH Range: 7.5 - 8.0
Dilution: ½ oz / gal

33

Available Sizes: 4 / 64 oz

9513**UL 2759****Maximo Lavender All Purpose Cleaner**

Deodorizing neutral cleaner for all hard surfaces - floors, walls, restroom surfaces and wherever light duty daily cleaning is performed.

Color: Purple
Fragrance: Lavender
pH Range: 7.5 - 8.0
Dilution: 1 oz / gal

36

Available Sizes: 6 / 1 qt | 2 / 3 L | 4 / 64 oz

DS 462**FACILITY+ One-Step Disinfectant Cleaner and Deodorant**

EPA registered hydrogen peroxide disinfectant, great for kitchens, offices, hotels, schools and more.

Color: Colorless
Fragrance: None
pH Range: < 1.0
Dilution: 2 oz / gal

37

Available Sizes: 6 / 1 qt | 2 / 3 L | 4 / 64 oz

9533**UL 2759****Sparkle Glass Cleaner**

Streak-free cleaner for glass, metal, plastic, fiberglass, and other hard surfaces, V.O.C. free, with no ammonia, solvents or fragrances.

Color: Dark Blue
Fragrance: None
pH Range: 7.5 - 8.0
Dilution: 1 oz / gal

38

Available Sizes: 6 / 1 qt | 2 / 3 L | 4 / 64 oz

9523**UL 2759****Powerball**

Mild pH cleaner degreaser, with no fragrances, phosphates, chlorinated or petroleum solvents, or flammable ingredients.

Color: Green
Fragrance: None Added
pH Range: 11.0 - 11.5
Dilution: 1 oz / gal

39

Available Sizes: 6 / 1 qt | 2 / 3 L | 4 / 64 oz



Nattura® brand cleaning products meet the strict chemical criteria for optimal human and environmental health. Use of these products makes for a safer, cleaner environment.



ECOLOGO® Certified products are certified to ECOLOGO® standards for reduced environmental impact. For more information, visit ul.com/el.

Many **Nattura**® products carry certifications from **Green Seal**® (**GS**), **UL's ECOLOGO**® (**UL**), or are approved in partnership with **Safer Choice** (**SC**), formerly DfE / Design for the Environment. Many of our carpet cleaning products carry the **Carpet and Rug Institute (CRI)** Seal of Approval. Look for these indicators in product listings throughout this catalog.

9580

Powder Presoak & Destainer

Oxygenated formula tackles dried-on food soils; reduces rejection rate.

Color: White
Fragrance: None
pH Range: (1%) 9.5 - 10.0
Dilution: 1 oz / gal

Available Sizes: 8 lb

9582

SC

Sunshine Liquid Dish Detergent

Manual dish soap with long-lasting suds and spot-free rinsing.

Color: Yellow
Fragrance: Fruity
pH Range: 6.5 - 7.0
Dilution: 1 oz / 4 gal

Available Sizes: 4 / 1 gal | 5 gal

9583

Oven & Grill Cleaner

A clinging foam cleaner with readily-biodegradable surfactants effective on carbonized soil.

Color: Blue
Fragrance: Orange
pH Range: 13.5 - 14.0
Dilution: RTU

Available Sizes: 12 / 1 qt

9588

Powder Dishmachine Detergent

Prevents scale accumulation in all water conditions, easily dispensed through "bowl" dispenser.

Color: White
Fragrance: None
pH Range: (1%) 10.0 - 10.5
Dilution: 4 grams / 1 gal

Available Sizes: 4 / 8 lb

* EPA/Safer Choice recognition does not constitute endorsement of this product. The Safer Choice label signifies that the product's formula, as Midlab, Inc. has represented it to the EPA, contains ingredients with more positive human health and environmental characteristics than conventional products of the same type. EPA/Safer Choice relies solely on Midlab, Inc., its integrity and good faith, for information on the product's composition, ingredients and attributes. EPA/Safer Choice has not independently identified, that is, via chemical analysis, the ingredients in the product formula, nor evaluated any of Midlab, Inc. non-ingredient claims. EPA/Safer Choice provides its evaluation only as to the product's human health and environmental characteristics, as specified in the Safer Choice Standard and based on currently available information and scientific understanding.

9018

GS | **UL 2759**

Concentrated All Purpose Cleaner

The environmentally responsible choice to quickly loosen light soils without leaving a dulling film.

Color: Pink
Fragrance: None
pH Range: 10.5 - 11.0
Dilution: 1 - 4 oz / gal

Available Sizes: 4 / 1 gal

9019

GS | **UL 2759**

Concentrated Non-Solvent Cleaner/Degreaser

A mild pH environmentally responsible choice that removes grease, ink and blood.

Color: Green
Fragrance: None
pH Range: 10.5 - 11.0
Dilution: 2 - 4 oz / gal

Available Sizes: 4 / 1 gal

9020

GS | **UL 2759**

Concentrated V.O.C. Free Glass Cleaner

The environmentally responsible choice that loosens soil on contact with glass, metal and plastic.

Color: Dark Blue
Fragrance: None
pH Range: 7.5 - 8.0
Dilution: 4 oz / gal

Available Sizes: 4 / 1 gal

9511

UL 2759

Kleenzall Spray & Wipe Cleaner/Degreaser RTU

Ready-to-use cleaner/degreaser that quickly removes dirt and grime while rinsing freely and leaving no film.

Color: Light Red
Fragrance: Fruity
pH Range: 10.0 - 10.5
Dilution: RTU

Available Sizes: 12 / 1 qt

9531

UL 2759

Brite Glass Cleaner RTU

Non-ammoniated, streak-free cleaner for glass and hard surfaces.

Color: Light Blue
Fragrance: None
pH Range: 9.5 - 10.0
Dilution: RTU

Available Sizes: 12 / 1 qt

9545

SC

Stainless Steel Cleaner

Cleans, polishes and protects stainless steel with a streak-free, smudge-resistant "liquid" shine.

Color: Colorless
Fragrance: Light Orange
pH Range: n/a
Dilution: RTU

Available Sizes: 6 / 16 oz

9622

UL 2759

Orange 020 Natural

Peroxide degreaser that cleans, whitens and brightens floors and carpets.

Color: Colorless
Fragrance: Orange
pH Range: 5.5 - 6.0
Dilution: ½ - 10 oz / gal

Available Sizes: 4 / 1 gal | 4 / 64 oz

9652

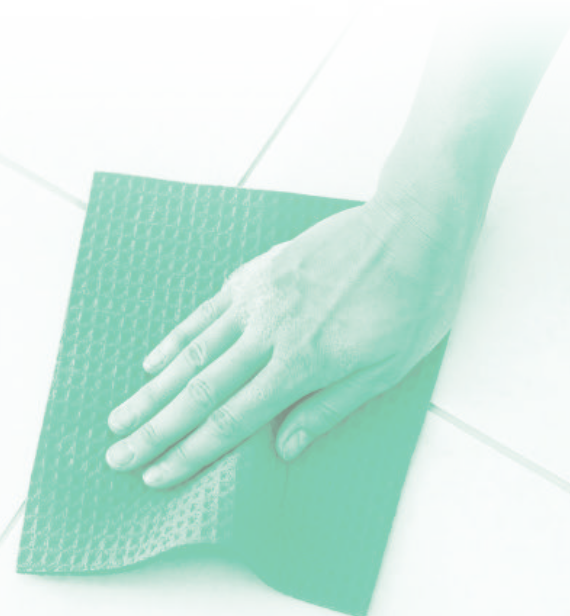
UL 2784

Enviro Hand Soap

The environmentally responsible choice that's mild to skin with a pleasant herbal mint fragrance

Color: Colorless
Fragrance: Herbal Mint
pH Range: 7.5 - 8.0
Dilution: RTU

Available Sizes: 4 / 1 gal



9582

Enviro Sink

Manual dish soap with long-lasting suds and spot-free rinsing, ideal for hotels and condos.

Color: Yellow
Fragrance: Fruity
pH Range: 6.5 - 7.0
Dilution: 1 oz / 4 gal

Available Sizes: 90 / 3.5 oz

9592

Ecodish

Effective, non-filming dishwashing powder, pre-measured at one packet per load, works in residential-style dishwashers.

Color: White
Fragrance: None
pH Range: (1%) 10.0 - 10.5
Dilution: 1 packet / load

Available Sizes: 200 / 1.4 oz

Restroom Care

9021

GS | UL 2759

Non-Corrosive Bath & Bowl Cleaner/Descaler

The environmentally responsible choice for removing rust deposits. Non-butyl, super concentrated.

Color: Yellow
Fragrance: None
pH Range: 0.5 - 1.0
Dilution: 8 oz / gal

Available Sizes: 4 / 1 gal | 4 / 64 oz

9541

UL 2759

Foaming Shower & Restroom Cleaner RTU

Clings to surfaces to remove soap scum and rust stains from acid-resistant bathroom surfaces.

Color: Yellow
Fragrance: Pleasant
pH Range: 1.0 - 1.5
Dilution: RTU

Available Sizes: 12 / 1 qt

Odor Control

9632

UL 2796

Banner Natural

Bio-enzymatic odor digester that destroys odors at their source; ideal for maintaining drains and pipes.

Color: Hazy
Fragrance: Fresh
pH Range: 6.5 - 7.0
Dilution: RTU

Available Sizes: 12 / 1 qt

9642

Breeze Fabric Odor Eliminator

Safely eliminate pet, smoke, cooking, and musty odors on fabrics, carpet, and upholstery.

Color: Colorless
Fragrance: Clean
pH Range: 8.0 - 8.5
Dilution: RTU

Available Sizes: 12 / 1 qt





9564

UL 2759

Mega Mop G

Rinse-free neutral damp mop cleaner that maintains high gloss acrylic finishes, saving time and labor.

Color: Red
Fragrance: Tangy Fruit
pH Range: 8.0 - 8.5
Dilution: 2 - 6 oz / gal

Available Sizes: 4 / 1 gal

9562

UL 2777

Sunrise Finish

High gloss floor finish, durable, buffable, and easy to apply.

Color: White Opaque
Fragrance: Characteristic
pH Range: 8.5 - 9.0
Dilution: RTU

Available Sizes: 4 / 1 gal | 5 gal

9565

UL 2759

Super Mega Mop G

Ideal for autoscrubbers, rinse-free and leaves no dulling film.

Color: Red
Fragrance: Tangy Fruit
pH Range: 7.5 - 8.0
Dilution: ¼ - 1½ oz / gal

Available Sizes: 4 / 64 oz

Carpet Care

9550

SC | CRI

3-in-1 Extractor

Quickly lifts soils from carpets with no solvents or phosphates, for use in hot water extraction cleaners. Carries the Carpet & Rug Institute Seal of Approval.

Color: Light Yellow
Fragrance: None
pH Range: 8.0 - 8.5
Dilution: 2 - 8 oz / gal

Available Sizes: 4 / 1 gal

9552

CRI

Magic Oxygen Spotter

An oxygenated, color-safe carpet spotter, highly effective on organic stains. Carries the Carpet & Rug Institute Seal of Approval.

Color: Colorless
Fragrance: None
pH Range: 8.0 - 8.5
Dilution: RTU

Available Sizes: 12 / 1 qt



9572

UL 2776

Liquid Laundry Detergent

Lifts and suspends soils, leaving clothes smelling fresh and clean, with no alkaline residue.

Color: Colorless

Fragrance: Fresh

pH Range: 8.5 - 9.0

Dilution: 1 - 4 oz / 50 lb fabric

Available Sizes: 5 gal

9574

UL 2776

Ecodetergent

High-efficiency, phosphate-free laundry powder.

Color: White

Fragrance: None

pH Range: (1%) 10.0 - 10.5

Dilution: 1 - 2 oz / 50 lb fabric

Available Sizes: 50 lb | 156 / 2 oz


SAFER CHOICE

The Safer Choice Program, uses EPA's chemical expertise to carefully evaluate products and label only those that have met the program's highly protective standards, as chemical products that are safer for people and the planet without sacrificing quality or performance.

Formerly DfE / Design for the Environment)


NSF

Founded in 1944, NSF's mission is to protect and improve and improve global human health. They develop public health standards and certifications that help protect food, water, consumer products, and the environment. As an independent, accredited organization, they test, audit and certify products and systems.


CARPET AND RUG INSTITUTE

The CRI Seal of Approval identifies effective carpet cleaning solutions and equipment that clean carpet right the first time and protect a facility's carpet investment. We are proud to display this on our Carpet Care products.


ECOLOGO®

ECOLOGO® Certified products are certified to ECOLOGO® standards for reduced environmental impact. For more information, visit ul.com/el.

ECOLOGO® certifications tell the story of a product's environmental performance throughout its lifecycle, enabling purchasers to identify holistically greener products and meet their sustainability goals.


GREEN SEAL®

Since 1989, the Green Seal® of Approval has used science-based programs to empower consumers, purchasers, and companies to create a more sustainable world.


ATLANTA KASHRUTH COMMISSION

The Atlanta Kashruth Commission (AKC) is an Orthodox community-based non-profit kosher supervising agency founded in the 1970s by Rabbi Emanuel Feldman and has a worldwide reputation in the field of kosher supervision. Look for the AKC logo on our Kosher Certified Food Service, Dishwashing and Machine Warewashing products.

Facility Certifications

ISO CERTIFIED

The International Organization for Standardization identifies manufacturing facilities that conform to the highest standards of safety, efficiency, and statutory and regulatory requirements.


LEED CERTIFIED

The U.S. Green Building Council's LEED Certification (Leadership in Energy & Environmental Design) is a green building tool addressing the entire building lifecycle— recognizing best-in-class building strategies.