



**RADIANS®**

**HAND PROTECTION**



**RADIANS.COM • 901-388-7776**



# CATEGORIES



**COATED PALM**

**P.4**



**COLD WEATHER**

**P.9**



**LEATHER**

**P.10**



**CUT PROTECTION**

**P.16**



**CUT PROTECTION SLEEVES**

**P.23**



**DEWALT HAND PROTECTION  
(ALL CATEGORIES)**

**P.24**



**OTHER STYLES**

**P.31**

# HAND PROTECTION

Radians has aggressively expanded our line of hand protection to provide gloves that keep workers' hands protected from common workplace hazards. The National Safety Council estimates that the direct cost of a laceration is \$15,000-\$25,000 including care and missing six days of work, which is the average time off for a hand injury.

You can look to us for performance gloves that protect your workers' hands while not compromising comfort and dexterity. We offer a variety of materials and coatings for various job applications, including nitrile, latex, polyurethane coatings, and cut resistant fibers.



**RADIANS®**

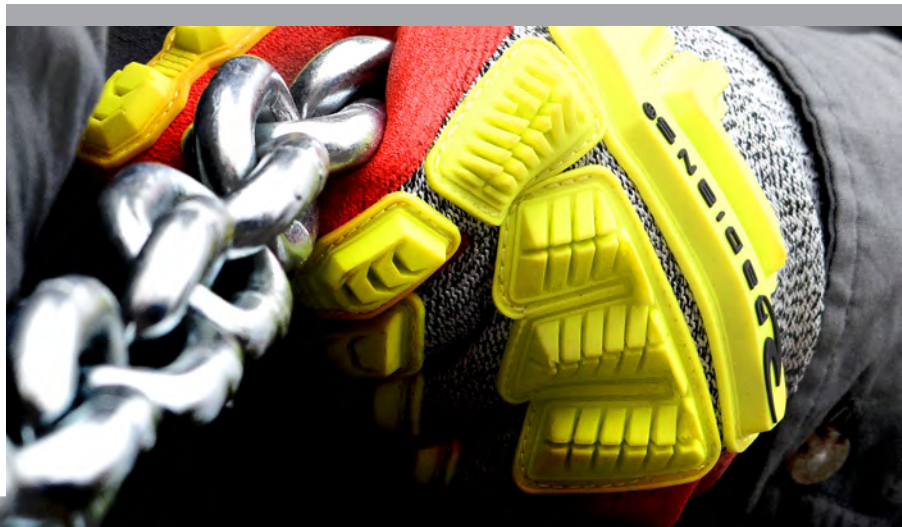
- Uncompromisable Protection
- Quality Performance
- Innovative Solutions

**DEWALT®**

- Trusted Brand
- Worldwide Marketing Support
- Premium Designs

**bellingham®**  
by RADIANS

- High Quality Industrial Gloves
- Built Tough For The Workplace
- Designed For Performance

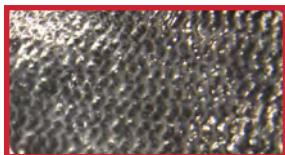




# COATED GLOVES

To address specific work-related hand protection issues, Radians uses several different types of palm coatings: smooth nitrile, foam nitrile, sandy foam nitrile, foam latex, sandy foam latex, crinkle latex, and PU polyurethane. Palm coatings allow for better gripping capabilities and tactile sensation without losing dexterity.

## COATING DESCRIPTIONS:



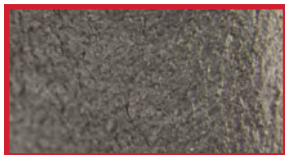
### **SMOOTH NITRILE**

- Excellent Abrasion Resistance
- Synthetic Rubber, Latex Free
- Excellent Puncture Resistance
- Tactile Sensitivity and Flexible Grip



### **FOAM LATEX**

- Micro Texture
- Better Breathability and Comfort
- Excellent Flexibility
- Resistant to Tears and Cuts



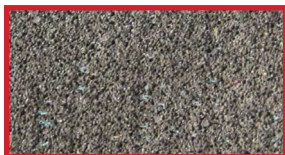
### **FOAM NITRILE**

- Lightweight Micro Texture
- Good Grip in Wet or Dry Applications
- Breathable, Flexible and Porous
- Excellent Abrasion Resistance



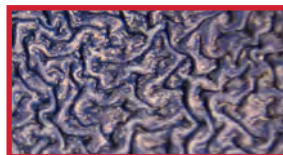
### **SANDY FOAM LATEX**

- Micro-Roughened Texture
- Better Breathability and Comfort
- Excellent Flexibility
- Resistant to Tears and Cuts



### **SANDY FOAM NITRILE**

- Micro Roughened Texture
- Excellent Grip in Wet or Dry Applications
- Breathable, Flexible and Porous
- Excellent Abrasion Resistance



### **CRINKLE LATEX**

- Rough Texture for Better Grip and Abrasion
- Better Breathability and Comfort
- Excellent Flexibility
- Resistant to Tears and Cuts



### **PU (POLYURETHANE)**

- Semi-Smooth Texture
- Extremely Flexible
- Superior Dexterity
- Not as Durable as Nitrile or Latex



- Proprietary, Engineered Coating by Radians
- Flexible and Durable
- Provides Better Grip than Nitrile

## FDG: WHY IS IT IMPORTANT?

When dealing with Foam, Micro Foam or Sandy Foam Nitrile to get the best grip you must give up some abrasion resistance and to get the best abrasion resistance you have to give up some grip.

With FDG you no longer must give up any of these. You get the **BEST OF BOTH WORLDS.**

**GRIP**

Good: Micro Foam Nitrile  
Better: Foam Nitrile  
Best: Sandy Foam Nitrile  
Exceptional: **FDG®**

**ABRASION**

Good: Sandy Foam Nitrile  
Better: Foam Nitrile  
Best: Micro Foam Nitrile  
Exceptional: **FDG®**



WARNING: Cancer and reproductive harm - [www.P65warnings.ca.gov](http://www.P65warnings.ca.gov)



When “longer lasting, higher abrasion, and better grip” matter to you, Radians delivers with its proprietary and engineered Flexible Durable Grip coating.

## RWG31 M - XL

- 13 Ga HV Green Nylon Shell
- Double-Dipped FDG® Palm Coating



4 - Abrasion  
1 - Coup Test/Cut  
2 - Tear  
1 - Puncture  
4 1 2 1 X X - ISO Cut Test



## RWG32 M - XL

- 13 Ga Nylon Shell
- FDG® Palm Coating
- Waterproof Nitrile Coating



4 1 3 1 X  
4 - Abrasion  
1 - Coup Test/Cut  
3 - Tear  
1 - Puncture  
X - ISO Cut Test



## RWG33 M - XL

- 13 Ga Nylon Shell
- FDG® Palm Coating
- Nitrile Dots for Added Abrasion Protection



4 1 4 1 X  
4 - Abrasion  
1 - Coup Test/Cut  
4 - Tear  
1 - Puncture  
X - ISO Cut Test



WARNING: Cancer and reproductive harm - [www.P65warnings.ca.gov](http://www.P65warnings.ca.gov)



# COATED GLOVES

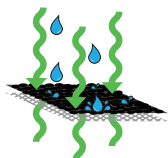
## NITRILE PALM COATING

**RWG35**

**S-XL**

**AQUA<sup>air</sup>**  
by RADIAN'S  
Water-Resistant Breathable Coating

- 15 Ga Nylon/Spandex Shell
- Fully Coated Micro Foam Nitrile
- Water-Resistant/Breathable



*New AQUA AIR™ Technology Lets Air In While Keeping Water Out, Allowing Hands To Stay Cooler And Perspire Less, Which Increases Comfort.*



EN388:2016



4 1 2 1 X

- 4 - Abrasion
- 1 - Coup Test/Cut
- 2 - Tear
- 1 - Puncture
- X - ISO Cut Test

Meets ANSI/ISEA

105:2016



6

ABRASION

**RWG11**

**S-2XL**

- 15 Ga Gray Nylon Shell
- Micro-Foam Nitrile Palm Dip
- Anti-Slip Nitrile Dotted Coating



Meets ANSI/ISEA

105:2016



6

ABRASION

EN388:2016



4 1 2 1 X

- 4 - Abrasion
- 1 - Coup Test/Cut
- 2 - Tear
- 1 - Puncture
- X - ISO Cut Test

**RWG12**

**S-2XL**

- 15 Ga Gray Nylon Shell
- 3/4 Micro-Foam Dipped Nitrile
- Anti-slip Nitrile Dotted Coating



Meets ANSI/ISEA

105:2016



6

ABRASION

EN388:2016



4 1 2 1 X

- 4 - Abrasion
- 1 - Coup Test/Cut
- 2 - Tear
- 1 - Puncture
- X - ISO Cut Test

**RWG13**

**S-2XL**

- 15 Ga Gray Nylon Shell
- Foam Nitrile Palm Coating
- Water-Resistant



Meets ANSI/ISEA

105:2016



6

ABRASION

EN388:2016



4 1 3 1 X

- 4 - Abrasion
- 1 - Coup Test/Cut
- 3 - Tear
- 1 - Puncture
- X - ISO Cut Test



WARNING: Cancer and reproductive harm - [www.P65warnings.ca.gov](http://www.P65warnings.ca.gov)





NITRILE PALM COATING

## RWG13C S-2XL

- 15 Ga Gray Polyester Shell
- Foam Nitrile Palm Coating



4 1 2 1 X  
4 - Abrasion  
1 - Coup Test/Cut  
2 - Tear  
1 - Puncture  
X - ISO Cut Test

## RWG15 S-2XL

- 13 Ga Black Polyester Shell
- Gray Smooth Nitrile Coating



Meets ANSI/ISEA 105:2016



ABRASION



3 1 2 1 X  
3 - Abrasion  
1 - Coup Test/Cut  
2 - Tear  
1 - Puncture  
X - ISO Cut Test

## RWG21 S-2XL

- 13 Ga Hi-Vis Yellow Nylon
- Sandy Foam Nitrile Coating
- TPR On Back



Meets ANSI/ISEA



ABRASION



4 - Abrasion  
1 - Coup Test/Cut  
4 - Tear  
1 - Puncture  
X - ISO Cut Test  
4 1 4 1 X

U.S. Pat. No. 9,241,519

## RWG23 S-2XL

- 13 Ga Polyester Shell
- Sandy Foam Nitrile, EVA PADDED PALM
- TPR Back
- Reinforced Thumb Crotch



Meets ANSI/ISEA 105:2016



ABRASION



PUNCTURE



4 - Abrasion  
X - Coup Test/Cut  
4 - Tear  
1 - Puncture  
A - ISO Cut Test  
4 X 4 1 A

U.S. Pat. No. 9,241,519

 WARNING: Cancer and reproductive harm - www.P65warnings.ca.gov

sales@radians.com | www.radians.com | 877-723-4267

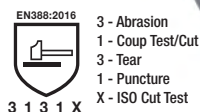


## PU/LATEX PALM COATINGS

### RWG14

S-2XL

- 13 Ga Gray Polyester Shell
- Gray PU Coating



### RWG22

XS-2XL

- 13 Ga Hi-Vis Yellow Polyester
- Yellow PU Coating



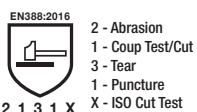
### RWG10

S-XL

- 15 Ga Hi-Vis Nylon Shell
- Micro-Foam Latex Coating
- Elastic Cuff



**CAUTION**  
Product Contains Latex

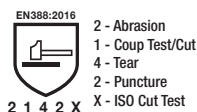


### RWG16

S-2XL

- 10 Ga Gray Polyester Shell
- Blue Crinkle Latex Coating

**CAUTION**  
Product Contains Latex



### RWG18

S-2XL

- 13 Ga Orange Nylon Shell
- Full Orange Waterproof Latex Coating
- Black Sandy Foam Latex Palm Dip

**CAUTION**  
Product Contains Latex



**WARNING:** Cancer and reproductive harm - [www.P65warnings.ca.gov](http://www.P65warnings.ca.gov)



# COLD WEATHER

## RWG17 S-2XL

- 3/4 Dipped Micro Finish Black Latex Coating
- 2 Ply Water-Resistant 13 Ga Orange High Visibility
- Nylon Outer Shell
- 7 Ga Acrylic Terry Liner



**CAUTION**  
Product Contains Latex

EN388:2016  
2 - Abrasion  
2 - Coup Test/Cut  
4 - Tear  
1 - Puncture  
X - ISO Cut Test  
2 2 4 1 X

Meets ANSI/ISEA 105:2016  
**A2** **3**  
CUT/980g ABRASION

## RWG27 S-2XL

- 7 ga Hi-Vis Yellow Acrylic Shell
- Blue Crinkle Latex Palm Coating
- Liner: 80% Acrylic 20% Polyester
- EN511-2006 Test Against Cold Contact Achieved Performance Level 2 Thermal Resistance



**CAUTION**  
Product Contains Latex

Meets ANSI/ISEA 105:2016  
**A3**  
CUT/1000g  
EN511  
2 - Abrasion  
X - Coup Test/Cut  
4 - Tear  
1 - Puncture  
X - ISO Cut Test  
X 2 X 2 X 4 1 X

## RWG28 M-2XL

- 13 Ga Gray Nylon Shell
- 10 Ga Acrylic Liner
- Full Gray Waterproof Latex Coating
- Black Sandy Foam Latex Palm Dip
- EN511-2006 Test Against Cold Contact Achieved Performance Level 2 Thermal Resistance



**CAUTION**  
Product Contains Latex

Meets ANSI/ISEA 105:2016  
**A2**  
CUT/736g  
EN511  
2 - Abrasion  
2 - Coup Test/Cut  
3 - Tear  
2 - Puncture  
X - ISO Cut Test  
X 2 X 2 2 3 2 X

## RWG604 S-2XL

- 2 Ply 13 Ga Pepper HPPE Outer Shell
- 7 Ga Terry Acrylic Inner Shell
- Black Foam Nitrile Palm Coating
- TPR Overlays on Fingers and Back



ANSI / ISEA 138  
**1**

EN388:2016  
4 X 4 4 E P

U.S. Patent No. 9,241,519

Meets ANSI/ISEA 105:2016  
**A4** **5** **5**  
CUT/1785g ABRASION PUNCTURE

## RWG605 S-2XL

- 2 Ply 13 Ga Blue and White HPPE Outer Shell
- 7 Ga Acrylic Terry Liner
- Waterproof Blue Smooth Latex Coating
- Black Foam Latex Palm Coating



**CAUTION**  
Product Contains Latex

Meets ANSI/ISEA 105:2016  
**A4** **5** **5**  
CUT/1510g ABRASION PUNCTURE

EN388:2016  
4 X 4 3 D  
4 - Abrasion  
X - Coup Test/Cut  
4 - Tear  
3 - Puncture  
D - ISO Cut Test

## RWG800 S-2XL

- REFLECTIVZ™ Waterproof Plated Thermal Lined Palm
- Synthetic Leather Nail Guards
- Reflective Knuckle Strap
- Wraparound Index Finger Seam



**WARNING:** Cancer and reproductive harm - www.P65warnings.ca.gov



# LEATHER GLOVES



## LEATHER TANNING/GRADES OF LEATHER

Despite mechanization, leather tanning consists of a complex series of treatments that require considerable time and energy. The purpose of the tanning process is to alter the protein structure of the skin to increase its durability, texture, and appearance. All natural hides are sorted at the tannery and are ranked by quality using a very basic system: A, B, C, D or Economy

- **A GRADE LEATHER:** Has zero blemishes or scar tissue damage
- **B GRADE LEATHER:** May have slight blemishes
- **C GRADE LEATHER:** Visible blemishes and heavy scar tissue damage
- **D OR ECONOMY GRADE LEATHER:** Heavy blemishes, heavy scar tissue, very coarse or stiff, and normally gray in color



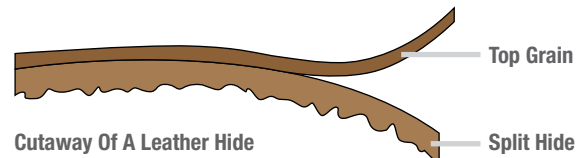
## GRAIN VS SPLIT LEATHER

**GRAIN LEATHER** comes from the top portion of the hide where the hair follicles have been removed. It is smooth to the touch.

**SPLIT LEATHER** is created by “splitting” the grain leather away from the underside of the hide. Turning one hide into two hides allows for more gloves per square meter to be produced. Split leather is rough to the touch.

Split leather is associated with the thicker hides of larger animals like cows. Smaller animals such as goat or sheep produce top-grain leather only as their hides are not thick enough to split.

If you want longevity, then specify grain leather gloves. If you are trying to outfit or protect temporary workers for intermittent jobs, then split leather gloves offer you cost savings and the necessary hand protection.



**GRAIN**



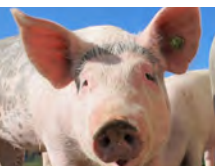
**SPLIT**

## TYPES OF LEATHER



### **COWHIDE:**

- Most common & popular type of leather used for gloves
- Moderately priced
- Durable glove with good abrasion resistance



### **PIGSKIN:**

- Offers greatest breathability due to the porous texture of the hide
- Becomes softer with use
- Withstands moisture without becoming stiff



### **GOATSKIN:**

- Strongest and most durable type of leather
- Excellent abrasion resistance
- Great for tasks that require dexterity

- Warmer than pigskin or goatskin
- Stiffens when it gets wet
- More heat resistant

- Dries soft and stays flexible
- Doesn't lose its shape or function when laundered

- One of the softest leathers available because of its high lanolin content





# LEATHER DRIVERS

## WHAT IS A LEATHER DRIVER STYLE?

The driver style is most often defined by the material compositions. If the glove is 100% leather on the palm and the backside, it is likely to be considered a driver style.



### THE THREE MAJOR LEATHER GLOVE THUMB DESIGNS

The set-in thumb is sewn in as a separate piece, which improves dexterity. Ideal for applications where there is extreme wear in the thumb webbing area. Most expensive option due to extensive sewing.



#### STRAIGHT THUMB

Least effective as it does not allow for natural thumb motion.



#### WING THUMB

Allows for greater flexibility and efficiency than straight thumbs.



#### KEYSTONE THUMB

Designed for superior movement and maximum comfort.

## KAMORI SERIES LEATHER DRIVERS



### RWG50 S-2XL

- White Grain Goat Skin Driver
- Aramid Lining
- TPR Overlays
- Slip-On Cuff
- Keystone Thumb



U.S. Patent No. 9,241,519



### RWG52 S-2XL

- White Grain Goat Skin Driver
- Aramid Lining
- Slip-On Cuff
- Keystone Thumb



3 5 3 4



### RWG51 M-2XL

- White Grain Goat Skin Driver
- TPR Overlays
- Slip-On Cuff
- Keystone Thumb



U.S. Patent No. 9,241,519



## FEATURED DRIVERS

### **RWG4722** S-2XL

- Standard Grain Goatskin Leather Driver
- Keystone Thumb
- Shirred Wrist, Cloth Hem



### **RWG4810** S-XL

- Economy Top Grain Pigskin Leather Driver
- Straight Thumb
- Shirred Wrist, Cloth Hem



### **RWG4221HV** S-2XL

- Standard Grain Cowhide Leather Driver
- Keystone Thumb
- Shirred Wrist, Cloth Hem



## LEATHER DRIVERS – COMPLETE LIST

	Part#	Hide	Grade	Thumb	Cuff	Stitching	Liner	Size
GOATSKIN	RWG50	Grain Goatskin	Standard	Keystone	Slip-On	Poly/Cotton	Aramid	S-XXL
	RWG51	Grain Goatskin	Standard	Keystone	Slip-On	Poly/Cotton	-	M-XXL
	RWG52	Grain Goatskin	Standard	Keystone	Slip-On	Poly/Cotton	Aramid	S-XXL
	RWG4710	Grain Goatskin	Economy	Keystone	Slip-On	Poly/Cotton	-	S-XXL
	RWG4720	Grain Goatskin	Standard	Straight	Slip-On	Poly/Cotton	-	S-XXL
	RWG4722	Grain Goatskin	Standard	Keystone	Slip-On	Poly/Cotton	-	S-XXL
PIGSKIN	RWG4740	Grain Goatskin	Premium	Straight	Slip-On	Poly/Cotton	-	S-XXL
	RWG4810	Grain Pigskin	Economy	Straight	Slip-On	Poly/Cotton	-	S-XL
	RWG4821	Grain Pigskin	Standard	Keystone	Slip-On	Poly/Cotton	-	S-XL
COWHIDE	RWG4825	Grain Pigskin	Standard	Straight	Slip-On	Poly/Cotton	White Fleece	S-XL
	RWG4010	Split Cowhide	Economy	Straight	Slip-On	Poly/Cotton	-	S-XXL
	RWG4020	Split Cowhide	Standard	Straight	Slip-On	Poly/Cotton	-	S-XL
	RWG4025	Split Cowhide	Standard	Straight	Slip-On	Poly/Cotton	Red Fleece	S-XXL
	RWG4120	Grain Cowhide	Economy	Straight	Slip-On	Poly/Cotton	-	S-XXL
	RWG4121	Grain Cowhide	Economy	Wing	Slip-On	Poly/Cotton	-	S-XXL
	RWG4122	Grain Cowhide	Economy	Keystone	Slip-On	Poly/Cotton	-	S-XXL
	RWG4220	Grain Cowhide	Standard	Keystone	Slip-On	Poly/Cotton	-	S-XXXL
	RWG4220H	Grain Cowhide w/Hi-Vis Fingertips	Standard	Keystone	Slip-On	Poly/Cotton	-	S-XXL
	RWG4221	Grain Cowhide	Standard	Keystone	Pull Strap	Poly/Cotton	-	S-XXL
	RWG4221HV	Grain Cowhide w/Hi-Vis Fingertips & Logo	Standard	Keystone	Slip-On	Poly/Cotton	-	S-XXL
	RWG4225	Grain Cowhide	Standard	Keystone	Slip-On	Poly/Cotton	Red Fleece	S-XXL
	RWG4420	Grain Cowhide	Premium	Keystone	Slip-On	Poly/Cotton	-	S-XXL
	RWG4425	Grain Cowhide	Premium	Keystone	Slip-On	Poly/Cotton	40g Thinsulate®	S-XXL
	RWG4222	Grain Cowhide / Split Cowhide Back	Standard	Keystone	Slip-On	Poly/Cotton	-	S-XXL
	RWG4421	Grain Cowhide / Split Cowhide Back	Premium	Keystone	Slip-On	Kevlar®	-	S-XXL





## WHAT IS A LEATHER PALM STYLE?

Both the shape and the materials used in the glove help to identify it as a leather palm. If the glove is 100% leather on the palm but the top of hand is fabric, it is likely a "leather palm." Safety cuffs are also common features on leather palm gloves.

*NOTE: There have been advances in glove design recently that combine features and benefits from drivers, leather palms, and performance gloves. This category is recognized as a hybrid style. To determine a leather palm from a hybrid, look for a "rubberized or starched safety cuff." If the glove has a rubberized or starched safety cuff, then it is a leather palm.*

### FORM FACTOR

90% of leather palms are made from split cowhide. Wearing split cowhide leather palm gloves is popular at large jobsites that require employees to wear hand protection but have limited budgets. It is a general purpose, low cost glove used in applications that don't require good dexterity. Pigskin has a greater resistance to water and abrasion and is used mostly in cold weather climates.

## CUFF STYLES



### STARCHED

Two layers of fabric laminated & stiffened with starch



### DUCK CUFF

Launderable single ply cotton material



### RUBBERIZED

Bonding of cuff layers with rubber cement. Standard safety cuff 2.5"



### GAUNTLET

4 - 5" longer cuff to provide extra protection up the wrist & arm



### KNIT

Elastic around wrist to keep dust & debris from entering glove

## FEATURED LEATHER PALMS

### RWG3700 M - XL

- Premium Grain Goatskin Leather Palm
- Gunn Cut w/ Wing Thumb
- Leather Knuckle Strap
- Rubberized Safety Cuff



### RWG3103 S - 2XL

- Economy Shoulder Gray Split Cowhide Leather palm
- Gunn cut w/wing thumb
- Leather Knuckle Strap
- Rubberized Safety Cuff



### RWG3825 L - XL

- Standard Grain Pigskin Leather Palm
- Gunn Cut w/Wing Thumb
- 150 Gram Micro Fleece Lined
- Leather Knuckle Strap
- 4" Knit Wrist





## FEATURED LEATHER PALMS

### **RWG3200JP** M – 2XL

- Regular Shoulder Gray Split Cowhide Joint Leather Palm
- Gunn Cut w/ Wing Thumb
- Leather Knuckle Strap
- Rubberized Safety Cuff



### **RWG3300** M – XL

- Select Shoulder Gray Split Cowhide Palm
- Gunn Cut w/ Wing Thumb
- Leather Knuckle Strap
- Rubberized Safety Cuff



### **RWG3400WDP** M – XL

- Side Split Gray Cowhide Double Palm
- Gunn Cut w/ Wing Thumb
- Canvas Back
- Leather Knuckle Strap
- Aramid Thread
- Rubberized Safety Cuff



## LEATHER PALM GLOVES – COMPLETE LIST

	Part	Hide	Grade	Cut	Palm	Back	Color	Cuff	Stitching	Liner	Size
PIGSKIN	RWG3700	Grain Goatskin	Premium	Gunn	Single	Canvas	Red	Rubberized Safety	Poly/Cotton	-	M-XL
	RWG3825	Grain Pigskin	Standard	Gunn	Single	Canvas	Blue/Black	Knit Wrist	Poly/Cotton	150g Micro Fleece	L-XL
	RWG3840	Grain Pigskin	Premium	Gunn	Single	Canvas	Blue/Red	Rubberized Safety	Poly/Cotton	-	M-XL
COWHIDE	RWG3010	Split Cowhide	Economy	Clute	Single	Canvas	Blue/Red	Knit Wrist	Poly/Cotton	-	L
	RWG3012	Split Cowhide	Economy	Clute	Single	Canvas	Blue/Red	Knit Wrist	Poly/Cotton	-	Ladies L
	RWG3103	Split Cowhide	Economy	Gunn	Single	Canvas	Red/Grey	Rubberized Safety	Poly/Cotton	-	S-XXL
	RWG3103G	Split Cowhide	Economy	Gunn	Single	Canvas	Red/Grey	Rubberized Gauntlet	Poly/Cotton	-	L
	RWG3105	Split Cowhide	Economy	Gunn	Single	Canvas	Red/Grey	Rubberized Safety	Poly/Cotton	Red Fleece	L
	RWG3110	Split Cowhide	Economy	Gunn	Patch	Denim	Navy	Denim Safety	Poly/Cotton	-	L
	RWG3111	Split Cowhide	Economy	Gunn	Single	Canvas	Blue/Red	Starched Safety	Poly/Cotton	-	L
	RWG3200	Split Cowhide	Shoulder	Gunn	Single	Canvas	Blue/Red	Rubberized Safety	Poly/Cotton	-	S-XXL
	RWG3200G	Split Cowhide	Shoulder	Gunn	Single	Canvas	Blue/Red	Rubberized Gauntlet	Poly/Cotton	-	L
	RWG3200DP	Split Cowhide	Shoulder	Gunn	Double	Canvas	Blue/Red	Rubberized Safety	Poly/Cotton	-	L-XL
	RWG3200HV	Split Cowhide	Shoulder	Gunn	Single	Nylon	Hi-Vis Orange	Rubberized Safety	Poly/Cotton	-	L-XL
	RWG3200JP	Split Cowhide	Shoulder	Gunn	Joint	Canvas	Blue/Red	Rubberized Safety	Poly/Cotton	-	M-XXL
	RWG3200W	Split Cowhide	Shoulder	Gunn	Single	Canvas	White	Washable Duck	Poly/Cotton	-	M-XXL
	RWG3205	Split Cowhide	Shoulder	Gunn	Single	Canvas	Blue/Red	Rubberized Safety	Poly/Cotton	40g Thinsulate®	M-XXL
	RWG3206	Split Cowhide	Shoulder	Gunn	Single	Leather	Grey	Rubberized Safety	Poly/Cotton	-	L
	RWG3210	Grain Cowhide	Shoulder	Gunn	Single	Canvas	Blue/Black	Rubberized Safety	Poly/Cotton	-	S-XXL
	RWG3300	Split Cowhide	Select Shoulder	Gunn	Single	Canvas	Green/Pink	Rubberized Safety	Poly/Cotton	-	M-XL
	RWG3300G	Split Cowhide	Select Shoulder	Gunn	Single	Canvas	Green/Pink	Rubberized Gauntlet	Poly/Cotton	-	M-XL
	RWG3400W	Split Cowhide	Side Split	Gunn	Single	Canvas	White	Rubberized Safety	Aramid	-	M-XXL
	RWG3400WG	Split Cowhide	Side Split	Gunn	Single	Canvas	White	Rubberized Gauntlet	Aramid	-	M-XL
	RWG3400WDP	Split Cowhide	Side Split	Gunn	Double	Canvas	White	Rubberized Safety	Aramid	-	M-XL
	RWG3400WDPG	Split Cowhide	Side Split	Gunn	Double	Canvas	White	Rubberized Gauntlet	Aramid	-	M-XL



## **RWG5100** XL

- Gray Split Economy Shoulder Cow Leather
- Fleece Cotton Drill Lining
- Wing Thumb
- 14" 1 piece Back

Also Available Left Hand Only (RWG5100LH)



## **RWG5210** XL

- Blue Regular Shoulder, Split Leather
- Full Sock Jersey Lined
- Wing Thumb, Reinforced Palm
- 14" Fully Weltd Seams
- Aramid Sewn



## **RWG5410** XL

- Premium Side Split Blue Cowhide Leather
- Full Sock Lining With Foam
- Reinforced Palm
- Wing Thumb
- 14" Fully Weltd Seams
- Aramid Sewn



## **RWG5310** XL

- Select Split Brown Cowhide Leather
- Full Sock Lining With Foam
- Reinforced Palm
- Wing Thumb
- 14" Fully Weltd Seams
- Aramid Sewn



## MIG/TIG WELDING GLOVES

### **RWG6210** M-2XL

- Mig-Tig Regular Grain Cowhide
- Seamless Forefinger
- Wing Thumb
- 4" Blue Regular Split Shoulder Cuff
- Aramid Sewn



### **RWG6310** M-2XL

- Mig-Tig Select Grain Cowhide
- Seamless Forefinger
- Wing Thumb
- 4" Brown Regular Split Shoulder Cuff
- Aramid Sewn



### **RWG6710** M-2XL

- Mig-Tig Select Grain Goatskin
- Seamless Forefinger
- Wing Thumb
- 4" Brown Regular Split Shoulder Cuff
- Aramid Sewn



# CUT PROTECTION GLOVES

## ANSI CUT LEVEL RATINGS

There are many kinds of cut hazards, and each one requires a different level of protection. Use the table below to help determine the cut level rating necessary for your work environment.



### **LIGHT CUT HAZARDS:**

material handling, assembly, maintenance, packaging, warehouse, general purpose, construction

200 - 499 grams



### **LIGHT/MEDIUM CUT HAZARDS:**

material handling, assembly, maintenance, packaging, warehouse, general purpose, construction, metal handling, appliance manufacturing

500 - 999 grams



### **LIGHT/MEDIUM CUT HAZARDS:**

material handling, assembly, maintenance, packaging, warehouse, general purpose, construction, metal handling, appliance manufacturing

1000 - 1499 grams



### **MEDIUM CUT HAZARDS:**

bottle and light glass handling, canning, dry walling, electrical, carpet installation, HVAC, paper production, automotive assembly, metal handling, metal stamping, packaging, warehouse, appliance manufacturing

1500 - 2199 grams



### **MEDIUM CUT HAZARDS:**

bottle and light glass handling, canning, dry walling, electrical, carpet installation, HVAC, paper production, automotive assembly, metal handling, metal stamping, packaging, warehouse, appliance manufacturing

2200 - 2999 grams



### **MEDIUM/HEAVY CUT HAZARDS:**

bottle and light glass handling, canning, dry walling, electrical, carpet installation, HVAC, paper production, automotive assembly, metal handling, metal stamping, packaging, warehouse, appliance manufacturing

3000 - 3999 grams



### **MEDIUM/HEAVY CUT HAZARDS:**

bottle and light glass handling, canning, dry walling, electrical, carpet installation, HVAC, paper production, automotive assembly, metal handling, metal stamping, packaging, warehouse, appliance manufacturing, meat processing

4000 - 4999 grams



### **HEAVY CUT HAZARDS:**

bottle and light glass handling, canning, dry walling, electrical, carpet installation, HVAC, paper production, automotive assembly, metal handling, metal stamping, packaging, warehouse, appliance manufacturing, meat processing

5000 - 5999 grams



### **HEAVY CUT HAZARDS:**

bottle and light glass handling, canning, dry walling, electrical, carpet installation, HVAC, paper production, automotive assembly, metal handling, metal stamping, packaging, warehouse, appliance manufacturing, meat processing

6000+ grams





## TEKTYE™ by RADIANS®

This engineered yarn can get to an ANSI cut level of A4 **WITHOUT THE USE OF FIBERGLASS OR STAINLESS STEEL.**

Provides more comfort and dexterity vs HPPE with Fiberglass or Stainless Steel.

Cost effective option for higher cut levels.

### WHY IS THIS IMPORTANT?

When Glass Fiber or Stainless Steel is used in the shell over time those fibers will break. This not only causes possible irritation to the skin in the areas of the break but also in that exact spot of the breakage the glove is no longer an A4 but rather closer to an A2.

#### RWG713 S-2XL

- 13 Ga Tektye™ A4 (Fiberglass And Stainless Steel Free)
- FDG® Palm Coating
- Reinforced Thumb Crotch



#### RWG718 S-2XL

- 18 Ga Tektye™ A4 (Fiberglass And Stainless Steel Free)
- FDG® Palm Coating
- Touchscreen



EN388:2016  
4 - Abrasion  
X - Coup Test/Cut  
4 - Tear  
3 - Puncture  
D - ISO Cut Test  
4 X 4 3 D

Meets ANSI/ISEA 105:2016  
**A4** **5** **4**  
CUT/1566g ABRASION PUNCTURE



EN388:2016  
4 - Abrasion  
X - Coup Test/Cut  
4 - Tear  
2 - Puncture  
D - ISO Cut Test  
4 X 4 2 D

Meets ANSI/ISEA 105:2016  
**A4** **6** **4**  
CUT/1556g ABRASION PUNCTURE



#### RWG701 S-2XL

- 13 Ga Tektye™ A4 (Fiberglass And Stainless Steel Free)
- PU Palm Coating
- Touchscreen



EN388:2016  
4 - Abrasion  
X - Coup Test/Cut  
4 - Tear  
3 - Puncture  
D - ISO Cut Test  
4 X 4 3 D

Meets ANSI/ISEA 105:2016  
**A4** **6** **4**  
CUT/1995g ABRASION PUNCTURE



#### RWG705 S-2XL

- 13 Ga Tektye™ A4 (Fiberglass And Stainless Steel Free)
- Foam Nitrile Palm Coating
- Reinforced Thumb Crotch



EN388:2016  
4 - Abrasion  
X - Coup Test/Cut  
4 - Tear  
3 - Puncture  
D - ISO Cut Test  
4 X 4 3 D

Meets ANSI/ISEA 105:2016  
**A4** **6** **4**  
CUT/1600g ABRASION PUNCTURE





# CUT PROTECTION GLOVES

## RWG530 S-2XL

- 13 Ga Salt and Pepper HPPE Shell
- Polyurethane Coating



3 X 4 2 A  
3 - Abrasion  
X - Coup Test/Cut  
4 - Tear  
2 - Puncture  
A - ISO Cut Test

Meets ANSI/ISEA 105:2016



## RWG531 S-2XL

- Materials Compliant with FDA 21 CFR 177.152
- 13 Ga Hi-Vis Yellow HPPE Shell
- Water Based PU Coating



Made with  
FDA accepted  
material for use in  
food processing

Individually Polybagged



4 3 4 4  
4 - Abrasion  
3 - Cut  
4 - Tear  
4 - Puncture

Meets ANSI/ISEA 105:2016



A2 CUT PROTECTION

## RWG532 S-2XL

- Touchscreen
- 13 Ga Black HPPE Shell
- Foam NBR Palm Coating



4 3 4 3  
4 - Abrasion  
3 - Cut  
4 - Tear  
3 - Puncture

Individually Polybagged

Meets ANSI/ISEA 105:2016



## RWG533 XS-2XL

- 18 Ga Green HPPE Shell
- Sandy Foam Nitrile Palm Coating



4 3 4 1  
4 - Abrasion  
3 - Cut  
4 - Tear  
1 - Puncture

Meets ANSI/ISEA 105:2016





## A2/A3 CUT PROTECTION

### RWG538 XS-2XL

- 18 Ga Green HPPE Outer Shell
- Black Foam Nitrile Palm Coating With Dots
- Reinforced Thumb Crotch



Meets ANSI/ISEA 105:2016

<b>A2</b>	<b>4</b>	<b>2</b>
CUT/796g	ABRASION	PUNCTURE



4 3 4 1  
4 - Abrasion  
3 - Cut  
4 - Tear  
1 - Puncture

### RWG550 XS-2XL

- 13 Ga White HPPE Shell
- Polyurethane Dip



Meets ANSI/ISEA 105:2016

<b>A2</b>	<b>6</b>	<b>4</b>
CUT/548g	ABRASION	PUNCTURE



4 X 4 3 B  
4 - Abrasion  
X - Coup Test/Cut  
4 - Tear  
3 - Puncture  
B - ISO Cut Test

Individually Polybagged

### RWG561 XS-2XL

- 18 Ga Gray HPPE
- Black PU Coating



Meets ANSI/ISEA 105:2016

<b>A2</b>	<b>4</b>	<b>3</b>
CUT/914g	ABRASION	PUNCTURE



3 X 4 1 B  
3 - Abrasion  
X - Coup Test/Cut  
4 - Tear  
1 - Puncture  
B - ISO Cut Test

### RWG562 S-2XL

- 13 Ga Salt N Pepper HPPE
- Gray PU Palm Coating



Meets ANSI/ISEA 105:2016

<b>A3</b>	<b>5</b>	<b>4</b>
CUT/1110g	ABRASION	PUNCTURE



4 X 4 3 C  
4 - Abrasion  
X - Coup Test/Cut  
4 - Tear  
3 - Puncture  
C - ISO Cut Test



## A4 CUT PROTECTION

### RWG555 XS-2XL

- 13 Ga Salt-N-Pepper HPPE Shell W/Fiberglass
- Foam Nitrile Palm Coating



Meets ANSI/ISEA 105:2016  
4 X 4 4 D  
4 - Abrasion  
X - Coup Test/Cut  
4 - Tear  
4 - Puncture  
D - ISO Cut Test



### RWG557 S-2XL

- 13 Ga Orange High Tenacity Nylon W/Fiberglass
- Black PU Palm Coating



Meets ANSI/ISEA 105:2016  
4 5 4 3  
4 - Abrasion  
5 - Cut  
4 - Tear  
3 - Puncture



### RWG560 XS-2XL

- 13 Ga Gray HPPE W/Fiberglass
- Black PU Palm Coating



Meets ANSI/ISEA 105:2016  
4 X 4 2 D  
4 - Abrasion  
X - Coup Test/Cut  
4 - Tear  
2 - Puncture  
D - ISO Cut Test



### RWG564 S-2XL

- 13 Ga Hi-Vis Green HPPE W/Fiberglass
- Foam Nitrile Palm Coating



Meets ANSI/ISEA 105:2016  
4 X 4 2 D  
4 - Abrasion  
X - Coup Test/Cut  
4 - Tear  
2 - Puncture  
D - ISO Cut Test



### RWG566 XS-2XL

- 18 Ga Gray HPPE with Stainless Steel
- Black PU Palm Coating
- Touchscreen



Meets ANSI/ISEA 105:2016  
4 5 2 1  
4 - Abrasion  
5 - Cut  
2 - Tear  
1 - Puncture





A5+ CUT PROTECTION

## RWG603 S-2XL

- 13 Ga Pepper HPPE Shell W/ Fiberglass
- Sandy Foam Nitrile Palm Coating
- TPR Overlays



Individually Polybagged  
U.S. Patent No. 9,241,519

Meets ANSI/ISEA 105:2016



4 X 4 4 E P  
4 - Abrasion  
5 - Coup Test/Cut  
4 - Tear  
4 - Puncture  
E - ISO Cut Test  
P - Impact Test

## RWG603R S-2XL

- 13 Ga Pepper HPPE Shell W/ Fiberglass
- Sandy Foam Nitrile Palm Coating
- Reinforced Thumb Crotch
- TPR Overlays



Individually Polybagged  
U.S. Patent No. 9,241,519

Meets ANSI/ISEA 105:2016



4 X 4 4 E P  
4 - Abrasion  
5 - Coup Test/Cut  
4 - Tear  
4 - Puncture  
E - ISO Cut Test  
P - Impact Test

## RWG609 S-2XL

- 13 Ga Hppe/Stainless Steel
- Sandy Foam Nitrile, EVA PADDED PALM
- Reinforced Thumb Crotch
- TPR Overlays



U.S. Patent No. 9,241,519

Meets ANSI/ISEA 105:2016



4 X 4 2 E  
4 - Abrasion  
X - Coup Test/Cut  
4 - Tear  
2 - Puncture  
E - ISO Cut Test

## RWG535 S-2XL

- 13 Ga HPPE/Stainless Steel Shell
- Foam NBR Palm Coating
- Reinforced Thumb Crotch
- Touchscreen



Meets ANSI/ISEA 105:2016



4 X 4 3 E  
4 - Abrasion  
X - Coup Test/Cut  
4 - Tear  
3 - Puncture  
E - ISO Cut Test

## RWG558 XS-2XL

- 13 Ga Hi-Vis Green HPPE w/ Fiberglass and Stainless Steel
- Black PU Palm Coating



Meets ANSI/ISEA 105:2016



4 X 4 3 F  
4 - Abrasion  
X - Coup Test/Cut  
4 - Tear  
3 - Puncture  
D - TDM-100

## RWG559 XS-2XL

- 13 Ga Hi-Vis Orange HPPE w/ Fiberglass and Stainless Steel
- Black Sandy Foam Nitrile Palm Coating



Meets ANSI/ISEA 105:2016



4 5 4 4  
4 - Abrasion  
5 - Cut  
4 - Tear  
4 - Puncture



# CUT PROTECTION GLOVES

## WORLD'S MOST ADVANCED CUT RESISTANT FIBER

Dyneema® Diamond Technology offers maximum protection over traditional materials like aramid, leather, nylon and polyethylene with glass fiber.

It can achieve levels B, C and D based on the latest EN388 2016 standard and levels A2, A3 and A4 on the new ANSI/ISEA 105:2016 standard without the use of glass or steel fiber reinforcement, which may break during use causing skin irritation.

## GREATER COMFORT & DEXTERITY

Dyneema® Diamond Technology fibers are thinner than generic HMPE fibers and 40% less dense than aramid fibers, making them more comfortable, thinner and cooler to the touch, while still providing advanced cut protection.

It also promotes skin-like dexterity, allowing users to perform delicate and precise tasks efficiently.



### RWGD100 XS-2XL

- 15 Ga Speckled Hi-Viz Yellow Shell
- Black PU Palm Coating
- Touchscreen



Individually Polybagged

Meets ANSI/ISEA 105:2016



3 5 4 4  
3 - Abrasion  
5 - Cut  
4 - Tear  
4 - Puncture

### RWGD101 XS-2XL

- 13 Ga Light Gray Shell
- Gray PU Palm Coating



Individually Polybagged

Meets ANSI/ISEA 105:2016



4 X 4 2 C  
4 - Abrasion  
X - Coup Test/Cut  
4 - Tear  
2 - Puncture  
C - ISO Cut Test

### RWGD104 S-2XL

- 13 Ga Blue Speckled Shell
- Black PU Palm Coating
- Touchscreen



Individually Polybagged

Meets ANSI/ISEA 105:2016



4 5 4 3  
4 - Abrasion  
5 - Cut  
4 - Tear  
3 - Puncture

### RWGD106 S-2XL

- 13 Ga Salt-N-Pepper Shell
- Black Foam Nitrile Palm Coating



4 - Abrasion  
5 - Cut  
4 - Tear  
4 - Puncture

4 5 4 4

Individually Polybagged

Meets ANSI/ISEA 105:2016



### RWGD110 S-2XL

- 13 Ga Salt-N-Pepper Shell
- Black Foam Nitrile Palm Coating
- TPR Overlays



4 - Abrasion  
5 - Cut  
4 - Tear  
4 - Puncture

4 5 4 4

Individually Polybagged

Meets ANSI/ISEA 105:2016



U.S. Patent No. 9,241,519

Dyneema® is a registered trademark of DSM. Use of this trademark is prohibited unless strictly authorized.

**WARNING:** Cancer and reproductive harm - [www.P65warnings.ca.gov](http://www.P65warnings.ca.gov)



# CUT PROTECTION SLEEVES



## Radians Sleeves with DuPont™ Kevlar®

Cut- and heat-resistant technology protect arms and wrists from cuts, slashes, punctures, and offer light heat resistance too.

Kevlar® is a synthetic, lightweight, heat-resistant fiber that is incredibly strong, delivering a high tensile strength-to-weight ratio. Kevlar® is also inherently flame resistant—its fibers won't melt, drip, or support combustion.

In addition to the excellent cut- and heat-protection benefits of Radians Sleeves, they're lightweight and comfortable too, making them an ideal choice for long wear when both cut and thermal hazards are present at the jobsite. Available in 1-ply and 2-ply.

- **A2 OR A3 CUT PROTECTION**
- **14" OR 18" LENGTH**
- **WITH OR WITHOUT THUMBHOLE**

Meets ANSI/ISEA 105:2016		<b>SLEEVES – COMPLETE LIST</b>				
		Part	Ply	ANSI Cut Protection	Length	Thumbhole
<b>A2</b>	<b>A2 CUT PROTECTION</b>	<b>RAD5114K</b>	1-Ply	A2 Cut Protection	14"	No
		<b>RAD5114KTS</b>	1-Ply	A2 Cut Protection	14"	Yes
		<b>RAD5118K</b>	1-Ply	A2 Cut Protection	18"	No
		<b>RAD5118KTS</b>	1-Ply	A2 Cut Protection	18"	Yes
<b>A3</b>	<b>A3 CUT PROTECTION</b>	<b>RAD5214K</b>	2-Ply	A3 Cut Protection	14"	No
		<b>RAD5214KTS</b>	2-Ply	A3 Cut Protection	14"	Yes
		<b>RAD5218K</b>	2-Ply	A3 Cut Protection	18"	No
		<b>RAD5218KTS</b>	2-Ply	A3 Cut Protection	18"	Yes



RAD5114KTS



RAD5114K

DuPont™, the DuPont Oval Logo, and all trademarks and service marks denoted with ™, SM or ® are owned by affiliates of DuPont de Nemours, Inc. unless otherwise noted. 2021 DuPont.

WARNING: Cancer and reproductive harm - [www.P65warnings.ca.gov](http://www.P65warnings.ca.gov)

[sales@radians.com](mailto:sales@radians.com) | [www.radians.com](http://www.radians.com) | 877-723-4267



# DEWALT

## JOB SITE TOUGH

DEWALT has always had the toughest tools to help you get the job done. DEWALT Work Gloves help get the job done in comfort while providing tough protection for your hands.

Whatever the demand, DEWALT Performance Work Gloves are designed to meet it.



# WORK GLOVES

PAGE  
**25**

Cut protection gloves available with ANSI-ISEA A2-A4 level cut protection

## CUT PROTECTION



PAGE  
**26**

Coated palm gloves are available with a variety of textures to fulfill your workplace needs

## COATED PALM



PAGE  
**27**

DEWALT provides a great selection of quality performance gloves for a broad range of applications

## PERFORMANCE



PAGE  
**29**

Leather gloves are an excellent option when it comes to many work scenarios

## LEATHER



PAGE  
**30**

When looking for cold weather gloves, look no further than DEWALT


## COLD WEATHER



OTHER  
**PPE**  
AVAILABLE

Check out the Radians Industrial Catalog for more



 WARNING: Cancer and reproductive harm - [www.P65warnings.ca.gov](http://www.P65warnings.ca.gov)





**DEWALT**

# CUT PROTECTION GLOVES

## DPG833 S-2XL

- 18 Ga High Visibility HPPE Shell
- Foam Nitrile Palm Coating
- Reinforced Thumb Crotch
- Touchscreen



4 X 4 1 B  
4 - Abrasion  
X - Coup Test/Cut  
4 - Tear  
1 - Puncture  
B - TDM-100 Test

Meets ANSI/ISEA 105:2016



## DPG855 S-2XL

- 13 Ga High Visibility HPPE Shell With Fiberglass
- Foam Nitrile Palm Coating
- Reinforced Thumb Crotch



4 X 4 2 D  
4 - Abrasion  
X - Coup Test/Cut  
4 - Tear  
2 - Puncture  
D - TDM-100 Test

Meets ANSI/ISEA 105:2016



Black Foam Nitrile

Durable & Washable  
For Long Lasting Protection



Radiates Heat Away  
To Help Keep You Cool

13 Ga Gray Speckled

## DPGD809 L-XL

Meets ANSI/ISEA 105:2016



EN388:2003



4 - Abrasion  
5 - Cut  
4 - Tear  
3 - Puncture

4 5 4 3

Individually Polybagged

**WARNING:** Cancer and reproductive harm - www.P65warnings.ca.gov

sales@radians.com | www.radians.com | 877-723-4267



**DEWALT**

# COATED PALM GLOVES

**DPG35****S-XL**

- 15 Ga Nylon/Spandex Shell
- Fully Coated Micro Foam Nitrile
- Water-Resistant/Breathable

Meets ANSI/ISEA  
105:2016

EN388:2016



4 1 2 1 X

- 4 - Abrasion
- 1 - Coup Test/Cut
- 2 - Tear
- 1 - Puncture
- X - ISO Cut Test

**DPG70****M-XL**

- 10 Ga Breathable Knit Back
- Textured Rubber Palm
- Ergonomic Design
- Seamless Fit

EN388:2016



2 1 4 2 X

- 2 - Abrasion
- 1 - Coup Test/Cut
- 4 - Tear
- 2 - Puncture
- X - ISO Cut Test

**CAUTION**  
Product Contains Latex**DPG76****L-XL**

- 15 Ga Breathable Knit Back
- Textured Nitrile Palm
- Ultradex® Tread Grip
- Ergonomic Design
- Seamless Fit

**DPG73****L**

- 13 Ga Breathable Poly Shell
- Ultradex® Smooth Nitrile Coating
- Elastic Cuff

Tagged Pairs: DPG73TL  
Three Pack: DPG73-3PK

EN388:2016



3 1 2 1 X

- 4 - Abrasion
- 1 - Coup Test/Cut
- 2 - Tear
- 1 - Puncture
- X - ISO Cut Test

**DPG72****S-2XL**

- 13 Ga Nylon Shell
- Double Dipped Flexible Durable Grip Coating
- Water and Oil Resistant

EN388:2016



4 1 3 1 X

- 4 - Abrasion
- 1 - Coup Test/Cut
- 3 - Tear
- 1 - Puncture
- X - ISO Cut Test

**WARNING:** Cancer and reproductive harm - [www.P65warnings.ca.gov](http://www.P65warnings.ca.gov)



# PERFORMANCE GLOVES

## DPG212 M - XL

- Rugged Reverse Leather Overlays
- Premium Grade Cowhide Leather
- Reinforced Thumb Saddle
- Neoprene Knuckle Guard
- Terry Cloth Brow Wipe



## DPG216 L - XL

- Split Cowhide Leather Palm Overlay
- Breathable Spandex Back
- Reinforced Thumb Saddle



## DPG217 M - XL

- Foam Padded Knuckle
- Rubberized Overlays
- SecureFit™ Wrist Closure



## DPG218 M - XL

- Reinforced Finger & Thumb
- Foam Padded Palm
- Lightweight & Breathable
- Short Slip-On Cuff
- Foam Padded Knuckle



3 - Abrasion  
1 - Coup Test/Cut  
1 - Tear  
1 - Puncture  
A - ISO Cut Test

3 1 1 1 A



WARNING: Cancer and reproductive harm - [www.P65warnings.ca.gov](http://www.P65warnings.ca.gov)

## DPG222 L - XL

- Hi-Dex Nubuck Palm
- Foam Padded Palm
- Reinforced Fingers and Thumb
- Rapidfit™ Slip-On Cuff



## DPG870 M - XL

- Rubberized Grip Overlays
- High Visibility Green Back
- Silver Reflective Tape
- RapidFit™ Slip-On Cuff



## DPG20 M - XL

- ToughGrip™ Thumb Saddle
- Padded Palm & Knuckle
- Elastic Wrist Strap
- Neoprene Knuckle
- Reinforced Fingertips
- Terry Cloth Brow Wipe





## DPG200 M-2XL

- Water & Oil Resistant Foam Padded Palm
- Reinforced Fingers & Thumb
- Neoprene Knuckle Guard
- Durable Double Stitching
- UlnaLock™ Secure Fit Wrist



## DPG201 M-XL

- Synthetic Leather Padded Palm and Finger Tips
- Spandex/Polyester Back
- PVC reinforced thumb crotch
- SecureFit™ Wrist Closure
- Spandex Fourchettes



## DPG210 M-XL

- Memory Gel Padded Palm
- Water/Oil Resistant PVC Overlays
- Reinforced Fingers & Thumb
- UlnaLock™ Secure Fit Wrist



EN388:2016  
  
 2 - Abrasion  
 1 - Coup Test/Cut  
 2 - Tear  
 1 - Puncture  
 X - ISO Cut Test

2 1 2 1 X

## DPG211 M-XL

- Foam Padded Synthetic Leather Palm
- Spandex/Mesh Back
- Foam Padded Knuckle
- Neoprene Wrist with TPR Pull Strap
- Flexible Polyester Fourchettes
- 4 point finger tips



## DPG230 M-XL


- High-Dexterity Fingerless Design
- Double Palm Overlay
- Neoprene Knuckle Guard
- Terry Cloth Brow Wipe
- ToughThread™ Double Stitching



## DPG250 M-2XL

- Premium Goatskin Leather Palm with Vibration Reducing Memory Gel Padding
- Padded Knuckle Guard
- Reinforced Fingers & Thumb
- Terry Cloth Brow Wipe



EN388:2016  
  
 2 - Abrasion  
 1 - Cut  
 X - Tear  
 X - Puncture

2 1 X X





## DPG780 M - XL

- Tacky Silicone Fingertip Grips
- PVC Palm Grip Overlays
- TPR Knuckle Guards\*
- Reinforced Fingers & Thumb
- Terry Cloth Brow Wipe



U.S. Patent No. 9,241,519

## DPG781 M - XL

- Padded PVC Palm
- TPR Impact Guards\*
- PVC Fingertip Grips
- SecureFit™ Wrist Closure
- Thumb Saddle Reinforcements



DEWALT

# LEATHER GLOVES

## DPG41 L

- Split Leather Knuckle Strap
- 2 1/2" Rubberized Cuff
- Double Leather Palm



## DPG31 L - XL

- Goatskin Leather
- Elasticized Wrist
- Keystone Thumb
- ToughThread™ Double Stitching



## DPG32 M - XL

- Split Leather Palm Overlay
- Elasticized Wrist
- Keystone Thumb



WARNING: Cancer and reproductive harm - [www.P65warnings.ca.gov](http://www.P65warnings.ca.gov)



# COLD WEATHER GLOVES

**DEWALT**

## DPG737 M-2XL

- 2-in-1 CWS™ Thermal Gripper
- Wicking Nylon Outer Shell
- Acrylic Thermal Liner
- Microfoam Latex ¾ Dip & Palm



**CAUTION**  
Product Contains Latex

EN388:2016  
2 - Abrasion  
2 - Coup Test/Cut  
4 - Tear  
1 - Puncture  
X - ISO Cut Test

Meets ANSI/ISEA 105:2016



## DPG740 M-XL

- Mild Condition Fleece
- Wind/Water Resistant Shell
- Palm & Finger Overlays
- Reinforced Thumb Saddle



## DPG748 L-XL

- Extreme Condition Insulated
- Water-Resistant
- Palm & Finger Overlays
- 40G Polyester Thermal Lined
- Rubber Pull Tab



## DPG750 M-2XL

- Extreme Condition Insulated
- Wind & Waterproof, Quad Layer, 100g Micro Fleece Liner
- Extended Gauntlet Cuff with Hook & Loop
- Reinforced, Water and Oil Resistant PVC Palm Overlay
- Durable PU Coated Polyester Shell
- Neoprene Knuckle



## DPG755 L-XL

- Waterproof Insulated
- 40G Thinsulate™ / Polyurethane Liner
- Dual Layer Thumb Saddle
- Durable Outer Shell
- Neoprene Knuckle Guard & Wrist
- Rubberized Grip Overlays



**Thinsulate**  
INSULATION

**WARNING:** Cancer and reproductive harm - [www.P65warnings.ca.gov](http://www.P65warnings.ca.gov)





**RADIANS**

**bellingham®**  
GLOVE

# OTHER STYLES

## **RWG122** S-2XL

- Cotton Corded Palm
- TPR on Back and Fingers
- Thumb Crotch and Pinch Guard



U.S. Pat. No. 9,241,519

## **RWG100** M-2XL

- Padded Double Layer Synthetic Palm
- Reinforced and Reflective Fingertips
- Easy Fit Open Cuff Design
- Silver Reflective Tape
- Reflective Pull Strap



## **6601** S-2XL



- Triple Dipped PVC/Nitrile Coating
- Tough 13 Ga Liner Adds Strength
- Textured Palm, 12" Gauntlet



## **4601** S-XL



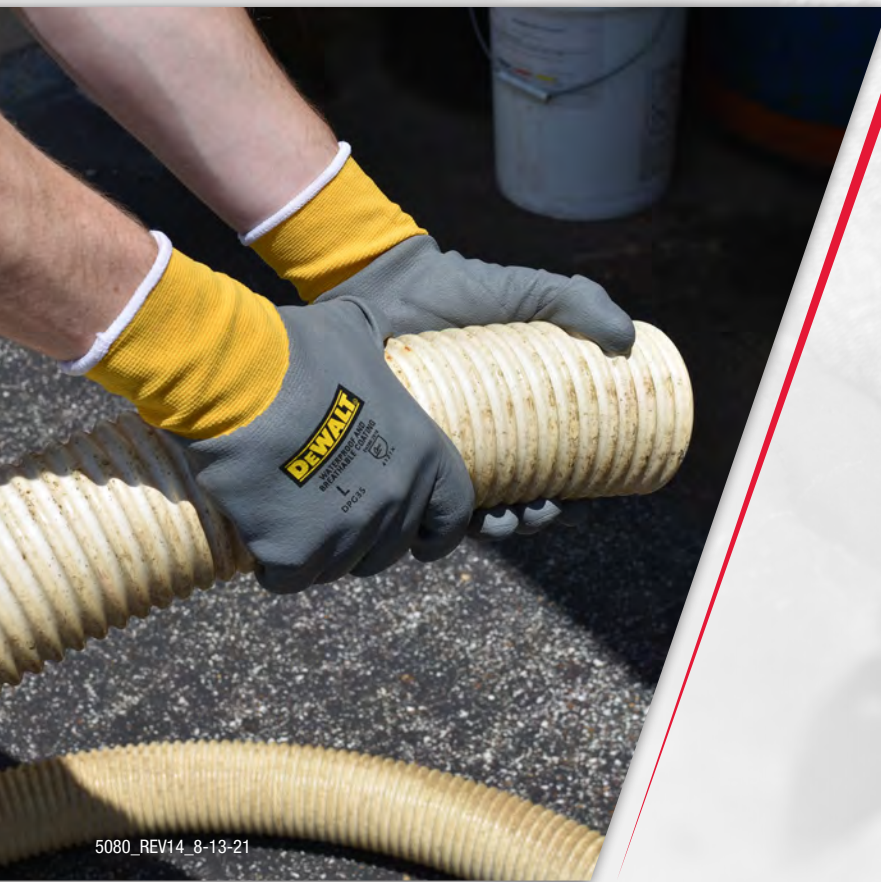
- Durable PVC/Nitrile Coating
- Soft Acrylic Fleece Liner
- Textured Palm



**WARNING:** Cancer and reproductive harm - [www.P65warnings.ca.gov](http://www.P65warnings.ca.gov)

[sales@radians.com](mailto:sales@radians.com) | [www.radians.com](http://www.radians.com) | 877-723-4267





**RADIANS®**

**HEADQUARTERS**

5305 Distriplex Farms Drive  
Memphis, Tennessee 38141

Toll Free: 877-723-4267

Phone: 901-388-7776

Fax: 901-266-2558

Email: [sales@radians.com](mailto:sales@radians.com)