



# HEAD PROTECTION BROCHURE

TYPE I HARD HATS • TYPE II SAFETY HELMETS • ACCESSORIES

POLYCARBONATE  
/ABS BLENDED  
SHELL

# USE YOUR HEAD

**DARE VARIETY™ TYPE II SAFETY HELMET**  
by RADIANS

DATE: \_\_\_\_\_ DRAWN BY: \_\_\_\_\_  
SCALE: \_\_\_\_\_ TRACED BY: \_\_\_\_\_  
REVISION: \_\_\_\_\_ CHECKED BY: \_\_\_\_\_



**AN ESTIMATED 10% OF WORKPLACE FATALITIES ARE DUE TO FLYING, FALLING, SWINGING, & ROLLING OBJECTS.**

Your hard hat is more than gear—it's protection you can count on. It guards against falling objects, impacts, and electrical hazards so you can work safely and confidently every day.

Our hard hats are built for comfort, durability, and maximum protection, meeting rigorous ANSI and OSHA standards. Wearing one isn't just about compliance—it's about safeguarding your future. Work hard, stay safe, and trust your hard hat to keep you safe so you can keep doing your best work.



## TYPE I VS TYPE II



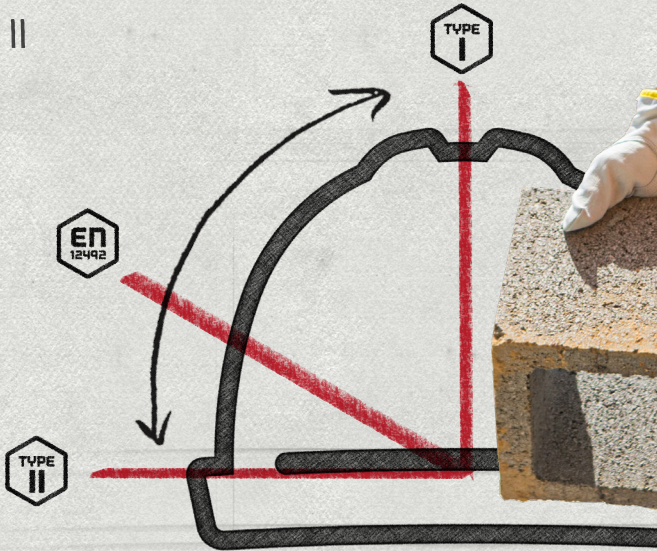
**ANSI TOP IMPACT**  
Designed to reduce the force of impact resulting from a blow to top of head



**CLIMBING STYLE HELMETS\***  
Provides additional impact protection to 60° from vertical. Most do not meet Type II requirements



**ANSI TOP & LATERAL IMPACT**  
Provides impact protection to 90° from vertical. Requires larger foam interior & increased side coverage



\* EN 12492 Climbing Style Helmets provide additional impact protection to 60 degrees from vertical. Many people confuse this with Type II helmets. Most climbing style helmets do not meet Type II requirements.

work hard. **stay safe.**

⚠ WARNING: Cancer and reproductive harm. [www.P65warnings.ca.gov](http://www.P65warnings.ca.gov)



CHIN STRAP

RADIANS

BROW PAD

EPS FOAM

**HARD HATS SHIELD FROM IMPACT;  
SAFETY HELMETS ADD SIDE  
PROTECTION AND CHIN STRAPS.**

### HARD HAT

- Z89.1 Type I
- Z89.1 Class E & G (non-vented)/ class C (vented)
- Reverse Donning (RD), High Temperature (HT) & Low Temperature (LT)
- Full Brim Or Cap Style (full brim provides added protection from dropped objects and sunburns)
- 6pt Suspension with Ratchet adjustment
- Standard or Vented (venting for warmer climates where electrical protection is not a requirement)

### APPLICATIONS

- Construction
- Manufacturing
- Mining
- General Industry
- Temporary Workers / Visitors



SCAN THE QR CODE TO LEARN MORE ABOUT THE IMPORTANCE OF HEAD PROTECTION & HOW WE CAN HELP

### SAFETY HELMET

- Z89.1 + EN 12492 clauses 4.2.1.2; 4.2.1.3; 4.2.1.4
- Z89.1 Class E & G (non-vented)/ class C (vented)
- High Temperature (HT) & Low Temperature (LT)
- Brimless for Increased field of vision especially when looking up
- Lower profile for Increased mobility and reduced snag hazard
- Chin strap securely fastens the hard hat to you so it stays on when climbing or looking around
- Increased comfort with foam padding & removable brow pad
- High initial cost compared to traditional hard hats
- Standard or Vented (venting for warmer climates where electrical protection is not a requirement)

### APPLICATIONS

- Any task that requires a Hard Hat & working at height: *Ladders, scaffolding, power & telecom poles*
- If you need to wear fall protection
- Any task that requires a greater field of vision
- Any task that could use a lower profile helmet to reduce snag hazards & increase mobility: *Miners, rescue workers*
- Industrial/Construction: *Iron Workers*
- Utilities: *Linesmen, gas/water/ sewer workers*

# DAREWARE™

by RADIANS

Head protection is crucial in work environments, whether it's a safety helmet or a hard hat, various standards exist, and 1997: published by the International Safety Equipment Association (ISEA), and obtain optimization Bulletin (SHIB) provides information for employers and workers on head protection options, employers and workers can gain a better understanding of head injuries and head protection technology. OSHA's head protection standards state that there are several ways to ensure affected workers wear appropriate head protection.

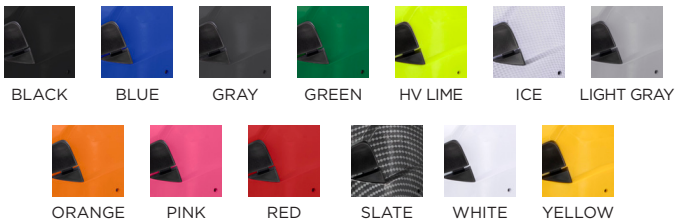


## DAREWARE TYPE II SAFETY HELMET

NON-VENTED: RHC2-COLOR

VENTED: RHC2V-COLOR

- Micro brim design
- Durable polycarbonate/ABS shell
- EPS foam liner
- Articulating ratchet adjustment & 4-point chin strap
- Removeable antimicrobial crown padding
- Non-vented rated Type II, Class E
- Vented helmet rated Type II, Class C



## REPLACEMENT PARTS

CHIN STRAP:  
RHC2-CS

RATCHET SUSPENSION:  
RHC2-RS

SOFT GOODS:  
RHC2-SG



Smooth glide ratchet adjustment



Top vents for improved airflow

work hard. stay safe.

⚠ WARNING: Cancer and reproductive harm. [www.P65warnings.ca.gov](http://www.P65warnings.ca.gov)

...with falling objects, struck-by, overhead electrical hazards, and risks from slip, trips, and falls. Both scientific understanding of head injuries and head protection...  
 ...es in styles and levels of protection, allowing employers and workers to choose head protection appropriate for the job. OSHA's head protection standards state th...  
 ...quipment Association (ISEA). The range of products available today allows employers and employees to select the right type of head protection for the job, comply...  
 ...m head protection. OSHA regulates head protection for general industry, construction, and maritime and requires employe...  
 ...oyers and employees when selecting PPE for head protection. This SHIB also provides instructions for properly inspecting and storing head protection. With a thos...  
 ...make informed decisions on selection and use. Proper head protection is crucial in work e...  
 ...ogy continues to advance. Modern head protection, whether it's a safety helmet or a har...  
 ...can be compliance through ANSI Z89.1-2009, 2003, and 1997; published by the Internati...  
 ...h the requirements of all OSHA standards (general industry, construction, maritime).  
 ...appropriate head protection. This Safety and Health Information Bulletin (SHIB) provides in

**RADIANS®**

**SMART HEADLAMP**

PART #: RHL700

- Powerful 700 lumens
- Shockproof & waterproof
- Internal gyroscope for focused lighting
- Four light settings
- USB-C rechargeable



**SHAPED VISORS**

PART #: RHC2-S1 (CLEAR AF+)  
 RHC2-S2 (SMOKE AF+)  
 RHC2-S3 (I/O)

- Premium anti-fog lens options
- Impact rated (Z87.1+)
- Compatible with glasses
- Flip up function



**DIELECTRIC EARMUFF**

PART #: RHC-EM

- Reinforced pivot points
- Padded earcups
- Lightweight & low profile



**CLEAR FACE SHIELD**

PART #: RHC2-C

- Polycarbonate construction
- Impact rated (Z87.1+)
- Compatible with glasses
- Flip up function



**WIRE MESH FACESHIELD**

PART #: RHC2-WM

- Metal mesh construction
- Z87.1 rated
- Compatible with glasses
- Flip up function



**HELMET SHADE**

PART #: RHHS-01G (HV GREEN)  
 RHHS-01O (HV ORANGE)

- 100% Polyester
- Lightweight drape for back of neck shade
- Collapses into built-in pocket



**SE NECK SHADE**

PART #: NSG-UNIV (HV GREEN)  
 NSO-UNIV (HV ORANGE)

- Self extinguishing-treated 100% polyester mesh
- Contrasting trim detail
- Meets ASTM D6413



# DAREWARE<sup>TM</sup>

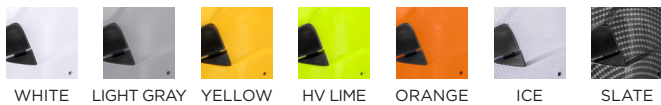
by RADIANS



## DAREWARE TYPE II FULL BRIM SAFETY HELMET

NON-VENTED: RHF2-COLOR  
VENTED: RHF2V-COLOR

- Full brim design
- Durable polycarbonate/ABS shell
- EPS foam liner
- Articulating ratchet adjustment & 4-point chin strap
- Removeable antimicrobial crown padding
- Non-vented rated Type II, Class E
- Vented helmet rated Type II, Class C



WHITE LIGHT GRAY YELLOW HV LIME ORANGE ICE SLATE

### REPLACEMENT PARTS

CHIN STRAP: RHC2-CS RATCHET SUSPENSION: RHF2-RS SOFT GOODS: RHC2-SG



SHOWN:  
Ice pattern



Smooth glide ratchet suspension,  
compatible with long hair

work hard. stay safe.

⚠ WARNING: Cancer and reproductive harm. [www.P65warnings.ca.gov](http://www.P65warnings.ca.gov)



### SMART HEADLAMP

PART #: RHL700

- Powerful 700 lumens
- Shockproof & waterproof
- Internal gyroscope for focused lighting
- Four light settings
- USB-C rechargeable



### DIELECTRIC EARMUFF

PART #: RHF2-EM

- Reinforced pivot points
- Padded earcups
- Lightweight & low profile



### HELMET SHADE

PART #: RHHS-01G (HV GREEN)  
RHHS-01O (HV ORANGE)

- 100% Polyester
- Lightweight drape for back of neck shade
- Collapses into built-in pocket



### SE NECK SHADE

PART #: NSG-UNIV (HV GREEN)  
NSO-UNIV (HV ORANGE)

- Self extinguishing-treated 100% polyester mesh
- Contrasting trim detail
- Meets ASTM D6413



# HYPEMAN™

by RADIANS



## HYPEMAN TYPE I CAP STYLE HARD HAT

NON-VENTED: RHH6-COLOR  
 VENTED: RHH6V-COLOR

- 6-point, foam-lined quick ratchet suspension
- Pillowed brow pad
- Padded nylon crown straps
- Non-vented rated Type I, Class E
- Vented helmet rated Type I, Class G
- Rated CSA Z94.1-15



BLACK



BLUE



DARK GRAY



HV LIME



HV ORANGE



ICE



GRAY



GREEN



LIGHT GRAY



OCEAN BLUE



ORANGE



PINK



RED



SLATE



WHITE



YELLOW



Rubber brim grip

## REPLACEMENT PARTS

RATCHET SUSPENSION: HHS6R

work hard. stay safe.

⚠ WARNING: Cancer and reproductive harm. [www.P65warnings.ca.gov](http://www.P65warnings.ca.gov)



### SMART HEADLAMP

PART #: RHL700

- Powerful 700 lumens
- Shockproof & waterproof
- Internal gyroscope for focused lighting
- Four light settings
- USB-C rechargeable



Easy-to-use controls



Up to 700 lumens

### LOGGERS COMBO

PART #: 300-WRVM (WHITE)  
300-YRVM (YELLOW)  
300-RRVM (RED)  
300-ORVM (ORANGE)

- Universal cap-style adapter
- Flip up wire mesh faceshield
- NRR 22 earmuff
- Universal accessory mounting clips



### DIELECTRIC EARMUFF

PART #: RHC-EM

- Reinforced pivot points
- Padded earcups
- Lightweight & low profile



### HELMET SHADE

PART #: RHHS-01G (HV GREEN)  
RHHS-01O (HV ORANGE)

- 100% Polyester
- Lightweight drape for back of neck shade
- Collapses into built-in pocket



### SE NECK SHADE

PART #: NSG-UNIV (HV GREEN)  
NSO-UNIV (HV ORANGE)

- Self extinguishing-treated 100% polyester mesh
- Contrasting trim detail
- Meets ASTM D6413



# THE JUDGE™ by RADIANS



## JUDGE TYPE I FULL BRIM HARD HAT

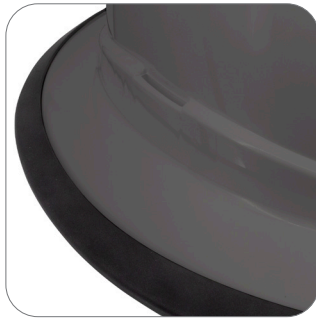
NON-VENTED: RHJ6-COLOR

VENTED: RHJ6V-COLOR

- 6-point, foam-lined quick ratchet suspension
- Pillowed brow pad
- Padded nylon crown straps
- Non-vented rated Type I, Class E
- Vented helmet rated Type I, Class G
- Rated CSA Z94.1-15



6-point padded suspension



Rubber brim grip



## REPLACEMENT PARTS

RATCHET SUSPENSION: HHS6R

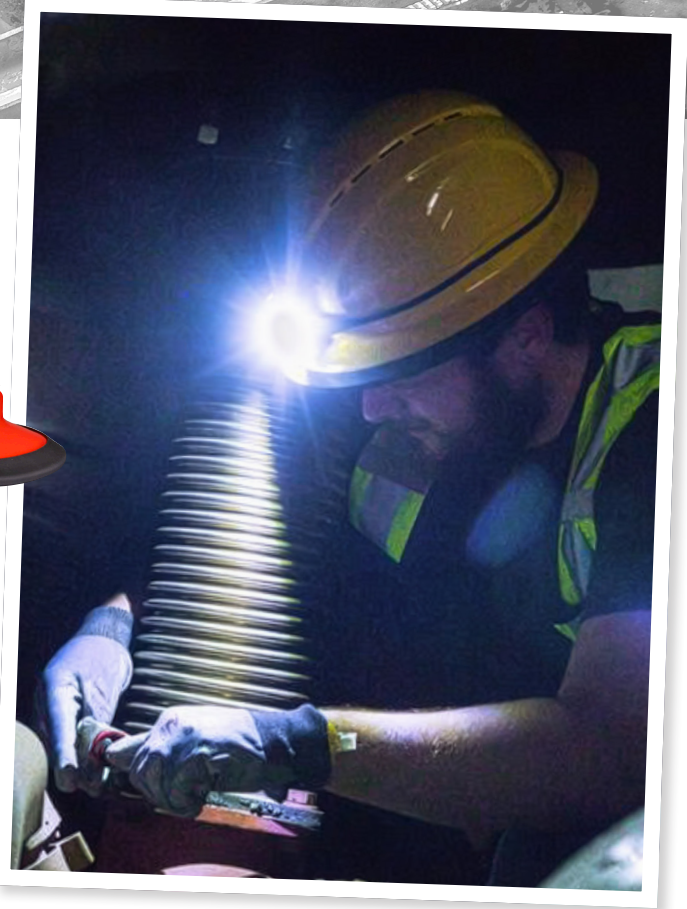
work hard. stay safe.

⚠ WARNING: Cancer and reproductive harm. [www.P65warnings.ca.gov](http://www.P65warnings.ca.gov)

### SMART HEADLAMP

PART #: RHL700

- Powerful 700 lumens
- Shockproof & waterproof
- Internal gyroscope for focused lighting
- Four light settings
- USB-C rechargeable



### SE NECK SHADE

PART #: NSG-UNIV (HV GREEN)  
NSO-UNIV (HV ORANGE)

- Self extinguishing-treated 100% polyester mesh
- Contrasting trim detail
- Meets ASTM D6413

