



YOUR SECRET WEAPON



2026 PRODUCT CATALOG

**WE'VE GOT YOUR BACK.
EVERY MILE.
EVERY SHIFT
EVERY JOB**

When you're responsible for keeping equipment running and operations on track, failure isn't an option. You need fluids that perform and support you can count on. That's why STARFIRE is built for the people who do the work—with:

Clear answers.

Dependable products.

Real people who pick up the phone and help you solve problems—not create new ones.



AUTOMOTIVE



**AG &
CONSTRUCTION**



INDUSTRIAL



HEAVY DUTY

WHO WE ARE

2 THE STARFIRE
WAY

4 OUR
SERVICES

INSIDE



Digital Catalog &
PDS/SDS Downloads

OUR PRODUCTS

- 6 MARKETS SERVED
- 10 EX INDUSTRIAL
- 12 MOTOR OIL
- 21 TRANSMISSION FLUID
- 26 6-GALLON ECO-BOX &
DISPENSING SYSTEM
- 27 GEAR LUBRICANTS
- 32 HYDRAULIC OILS
- 35 ANTIFREEZE/COOLANTS
- 41 GREASE
- 44 FUNCTIONAL FLUIDS
- 47 STARFIRE DEF
- 48 TEC-A AEROSOLS
- 50 POUR CHEMICALS
- 51 ANCILLARY PRODUCTS

2026 PRODUCT CATALOG

THE **STARFIRE** WAY

BUILT FOR THE WAY YOU WORK

From **ATF** to **Zombie Dry**, STARFIRE keeps your operation moving with a full lineup of lubricants, coolants, and chemicals. Our in-house logistics team delivers some of the fastest lead times in the industry—because waiting on product means lost time, and you don't have time to lose.



REAL EXPERTS. REAL ANSWERS.

Have a question about performance specs or compatibility? We've got you. Our team knows this industry inside and out and is always ready to help you make the right call for your equipment.



WE BUILD VALUE INTO EVERYTHING WE DO

From our high-performance products to the way we manage our own manufacturing, packaging, and logistics. That means we can deliver top-tier quality at competitive pricing, helping you keep costs down without cutting corners.



YES, WE ANSWER THE PHONE

You don't have time for hold music. When you call STARFIRE, you get a real person—someone who knows the products, understands the pressures of your job, and can actually solve problems. Fast.



WE MEET AND EXCEED SPECIFICATIONS, AND EXPECTATIONS.

We are committed to offering a diverse lineup of field-tested products that meet/exceed specifications, and many are OEM-approved. If you've got questions about any one of our products, our sales team will exceed YOUR expectations by getting you the answers you need. In person.





LOGISTICS THAT DELIVER— LITERALLY

Getting you what you need, when and where you need it—that's our job. Our full-service logistics team handles everything from regional route trucks and nationwide freight carriers to bulk transports and export container loading. We'll ship directly to your warehouse or your freight forwarder of choice. However you need to get it there, we'll make it happen.

FROM QUARTS TO TRUCKLOADS. Whether you're topping off a single vehicle or supplying an entire fleet, we've got you covered. STARFIRE products are available in quarts, pails, kegs, drums, totes, and bulk tanker loads. You get the right product, in the right volume, without the hassle.

REAL TECH SUPPORT, NOT A RUNAROUND

Need help choosing the right product? Looking for a specialty blend or a hard-to-find chemical? Our tech support team is here to give you straight answers and smart solutions. From performance specs to application advice, we're ready to help.

Call us at 1-888-258-8723 or **ASK US HERE.**



NEED EQUIPMENT TOO?

We supply a full range of lubricant handling gear: **Steel & poly tanks, single- and double-wall options, pumps (manual, pneumatic, electric), control nozzles, hoses, reels, grease sets—you name it.**

Give us a call for a quote.



STARFIRE SENTRY ANALYSIS PROGRAM

Know what's going on inside your machines—before it becomes a problem. Our Sentry Analysis Program gives you expert-level insight into the condition of your lubricants and coolants with testing that identifies wear, contamination, and potential failures.

WHAT YOU GET:

- Lubricant and antifreeze testing kits
- Detailed analysis and interpretation
- Instant online results and mobile access
- Expert lab diagnostics (ISO 17025 A2LA-accredited)

WHY IT MATTERS:

- Maximize uptime and equipment life
- Extend oil drain intervals safely
- Catch problems early, avoid big repairs
- Keep your maintenance schedule on track

POWERED BY HORIZON®

Our web-based data platform gives you full visibility into your fluid analysis:

- Submit samples online
- Track turnaround time
- Spot trends with smart graphing tools
- Update and manage equipment profiles from anywhere



**DOWNTIME IS NOT
IN OUR VOCABULARY**

EX INDUSTRIAL

STARFIRE EX is built for demanding medium-to-large scale manufacturing environments. These high-performance lubricants are engineered with advanced additive technology for maximum protection, reliability, and uptime. Backed by expert technical support and SENTRY Fluid Analysis services, STARFIRE EX keeps your operation online—24/7.

- Hydraulic Oil
- Gear Oil
- Compressor Oil
- Grease
- Specialty Fluids

DEPENDABILITY, DAY IN AND DAY OUT



AUTOMOTIVE

For passenger cars and light trucks, STARFIRE delivers the OEM-quality fluids that keep everyday vehicles moving. Whether you're wrenching in a shop, working in your own garage, or hauling the kids to practice, we're here to help you keep families and customers on the road with confidence.

- Motor Oil – Synthetic Blend and Full Synthetic
- Transmission Fluid
- Gear Lubricants
- Antifreeze/Coolants
- Grease
- Brake Fluid
- Power Steering Fluid
- Pour Chemicals
- Aerosol Products
- Wiper Fluid

**BUILT FOR
THE LONG HAUL**



HEAVY DUTY

Your fleet keeps the economy moving—and we help keep your fleet moving. STARFIRE heavy-duty lubricants are approved by major manufacturers to perform under pressure. Just like you. We'll deliver the volumes you need, when you need them. Because a fleet's work is never done.

- Engine Oil
- Gear Oil
- HD Antifreeze/Coolant
- EP Grease
- Diesel Exhaust Fluid

KEEPING FIELDS & JOBSITES RUNNING



AGRICULTURE & CONSTRUCTION

In agriculture and construction, you don't stop for weather—or for breakdowns. STARFIRE Off-Road lubricants are made to handle the heat, the cold, and everything in between. From planting season to site prep, we help keep your equipment producing—and your operation growing.

- Engine Oil
- Hydraulic Oil
- Gear Oil
- Tractor Hydraulic & Transmission Fluid
- HD Antifreeze/Coolant
- EP Grease



EX Industrial

NEXT-LEVEL PERFORMANCE FOR MANUFACTURING

The STARFIRE EX premium line of industrial lubricants—engineered for large-scale operations that can't afford to compromise on productivity. Formulated to deliver increased efficiency and provide maximum protection in a diverse range of service applications. With the legendary STARFIRE reliability, your equipment stays protected, your output stays high, and your operation keeps moving—24/7.

HYEX™ HYDRAULIC OIL

- AW
- PREMIUM AW
- HVI
- ZINC FREE AW
- R&O
- SYNTHETIC R&O
- FIRE RESISTANT
- FOOD GRADE



Product
Data



TALEX™ EP GEAR OIL

- CONVENTIONAL
- SYNTHETIC G-III (GROUP III)
- SYNTHETIC PAO
(POLYALPHAOLEFIN)
- SYNTHETIC PAG
(POLYALKYLENE GLYCOL)



Product
Data

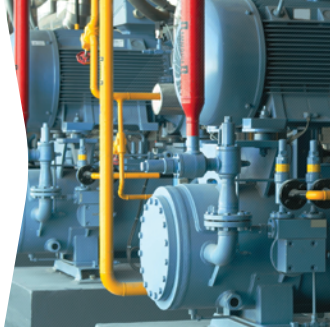


CIREX™ COMPRESSOR OIL

- SYNTHETIC G-III (GROUP III)
- SYNTHETIC PAO
(POLYALPHAOLEFIN)
- SYNTHETIC PAG
(POLYALKYLENE GLYCOL)
- SYNTHETIC DE (DIESTER)



Product
Data



EPEX™ GREASE

- MULTI-PURPOSE
- HI-TEMP EP 2
- 3% MOLY EP 2
- CS EP 2



Product
Data



SOLEX™ SPECIALTY

- WAYLUBES
- ROCK DRILL
- WHITE OIL
- HEAT TRANSFER OIL
- TRANSFORMER OIL
- SPINDLE OIL
- COOLFROST
PG HTF
- COOLTHERM
EG HTF



Product
Data



Motor Oil

ENGINEERED TO OUTPERFORM. BUILT TO PROTECT.

STARFIRE motor and engine oils are designed to meet—or exceed—the latest OEM specifications. We use only premium hydro-treated, paraffinic base oils combined with a cutting-edge additive system packed with detergents, dispersants, anti-wear and friction modifiers, plus advanced oxidation and corrosion inhibitors. The result? Superior protection, cleaner engines, and performance you can trust mile after mile.





SYNTHETIC BLEND

Fully licensed motor oils that meet or exceed the latest manufacturer requirements for use in passenger car, SUV and light duty truck gasoline engines, powerboats, motorcycles, and other stationary and mobile equipment.

APPLICATIONS

- Licensed API SQ and ILSAC GF-7A, API SP and ILSAC GF-6A and covers all preceding specifications
- STARFIRE 5W-20 can be used when Ford WSS M2C960-A1, M2C945-B1, M2C945-A, M2C930-A, M2C153, Chrysler MS-6395, MS10797, GM 6094M or GM 4718 is specified
- STARFIRE 5W-30 can be used when Ford WSS M2C961-A1, M2C946-B1, M2C946-A, M2C929-A, Chrysler MS-6395, GM 6094M or GM 4718 is specified

BENEFITS

- Superior protection against thermal breakdown and deposits at all operating temperatures
- Excellent cold-cranking capabilities
- Excellent anti-wear, anti-foam, anti-corrosion and anti-rust protection

SAE / AVAILABLE SIZES

	QT	GAL	5 QT	5 GAL	6 GAL ECO	55 GAL	TOTE
5W20	•		•	•	•	•	•
5W30	•		•	•	•	•	•
10W30	•	•	•	•	•	•	•
10W40	•		•	•		•	•



Product Data



▶▶▶ FULL SYNTHETIC

Fully licensed, full synthetic motor oils are engineered for virtually all service classifications for domestic and foreign gasoline engines — and are fully compatible with all other synthetic and petroleum-based motor oils.

APPLICATIONS

- Licensed API SQ and ILSAC GF-7A, API SQ and ILSAC GF-6A (GF-7B and GF-6B for 0w-16) and covers all preceding specifications
- STARFIRE 0W-20 can be used when Ford WSS M2C962-A1, M2C947-B1, M2C947-A, Chrysler MS-6395, GM 6094M or GM 4718 is specified
- STARFIRE 5W-20 can be used when Ford WSS M2C960-A1, M2C945-B1, M2C945-A, M2C930-A, M2C153, Chrysler MS-6395, MS10797 or GM 6094M is specified
- STARFIRE 5W-30 can be used when Ford WSS-M2C961-A1, M2C946-B1, M2C946-A, M2C929-A, Chrysler MS-6395 or GM 6094M is specified

BENEFITS

- Provides Low Speed Pre-Ignition (LSPI) protection
- Superior protection against thermal breakdown and deposits at all operating temperatures
- Excellent cold-cranking capabilities
- Excellent anti-wear, anti-foam, anti-corrosion and anti-rust protection

SAE / AVAILABLE SIZES

	QT	GAL	5 QT	5 GAL	6 GAL ECO	55 GAL	TOTE
0W16	•		•	•	•	•	•
0W20	•		•	•		•	•
5W20	•		•	•	•	•	•
5W30	•		•	•		•	•
10W30	•		•	•		•	•



Product Data





FULL SYNTHETIC DEXOS™ 1 GEN 3

State-of-the-art, advanced technology with exceptionally high viscosity index minimizes cold-weather oil thickening, preventing battery drain and engine wear, even at subzero startups. Licensed and approved through GM dexos™1 Gen 3 specifications for worldwide requirements for all GM automotive gasoline engines currently in use.

APPLICATIONS

- Licensed API SQ and ILSAC GF-7A, API SP and ILSAC GF-6A and covers all preceding specifications
- Use in all Buick, Chevrolet, Cadillac, and GMC vehicles starting in the 2011 model year
- An excellent choice for all earlier model year vehicles produced by GM
- STARFIRE 0W-20 can be used when Ford WSS M2C962-A1, M2C947-B1, M2C947-A, Chrysler MS- 6395, GM 6094M or GM 4718 is specified
- STARFIRE 5W-30 can be used when Ford WSS M2C961-A1, M2C946-B1, M2C946-A, M2C929-A, Chrysler MS-6395 or GM 6094M is specified

BENEFITS

- Provides Low Speed Pre-Ignition (LSPI) protection for small-displacement turbo-charged and Gasoline Direct Injected (GDI) engines
- Meets manufacturer latest warranty requirements
- Enhanced rust protection for flex-fuel vehicles, specifically those that run on ethanol-based fuel (E85)

SAE / AVAILABLE SIZES

	QT	GAL	5 QT	5 GAL	6 GAL ECO	55 GAL	TOTE
0W20	•		•	•	•	•	•
5W30	•		•	•	•	•	•



Product Data



GM License #
D330BBDH271 (0W20)

GM License #
D330ACDG271 (5W30)

FULL SYNTHETIC EURO FORMULA

Is specially formulated for the lubrication needs of modern European gasoline and diesel engine cars, and light trucks.

APPLICATIONS (0W-20 & 5W-20)

- API SP, SN Plus, SN, SM, SL
- ACEA C5, C2 Peugeot Citroen PSA B 71
BMW LL-17 2297, B71 2290
- Jaguar/Land Rover Porsche C20
STJLR.51.5122 Stellantis FPW9.55535,
Mercedes Benz MB FPW9.5503
229.72, 229.71 Volkswagen VW 508,
Opel/GM-OV 0401547 VW 509

APPLICATIONS (0W-30, 5W-30, 5W-40)

- API SP, SN Plus, SN, SM, SL
- ACEA C3, C2 Opel/GM-OV 0401547
BMW LL-04, LL-01 Renault RN0700, RN0710
- Fiat 9.55535-S2 Peugeot Citroen PSA B
Jaguar/Land Rover STJLR 71 22290
03.5007 Porsche C30, A40
Mercedes Benz MB Volkswagen VW 502, 505,
229.52, 229.51, 503, 506, 504, 507
MB 229.31, 229.5, 229.3

BENEFITS

- Provides outstanding protection in high RPM, hot-running engines
- Designed for newer vehicle emission control systems
- Meets industry and vehicle manufacturer requirements for long-life protection of gasoline vehicle catalytic converters

SAE / AVAILABLE SIZES

	QT	GAL	5 QT	5 GAL	6 GAL ECO	55 GAL	TOTE
0W20	•			•	•	•	•
0W30				•	•	•	•
0W40	•			•	•	•	•
5W30	•			•	•	•	•
5W40	•		•	•	•	•	•



Product
Data



HIGH MILEAGE

Fully licensed motor oils that meet or exceed the latest manufacturer requirements for use in passenger car, SUV, and light duty truck gasoline engines, powerboats, motorcycles, and other stationary and mobile equipment. They are specially formulated for higher mileage vehicles to help protect worn seals, reduce oil loss, and prevent leaks.

APPLICATIONS

- Vehicles with 75,000 miles or more
- Licensed API SQ and ILSAC GF-7A (March 2025), API SP and ILSAC GF-6A and covers all preceding specifications
- STARFIRE 5W-30 can be used when Ford WSS M2C961-A1, M2C946-B1, M2C946-A, M2C929-A, Chrysler MS-6395 or GM 6094M is specified

BENEFITS

- Special additives and seal conditioner for older vehicles
- Helps combat engine oil consumption
- Helps reduce oil loss caused by burn-off
- Superior protection against thermal breakdown and deposits at all operating temperatures
- Excellent anti-wear, anti-foam, anti-corrosion and anti-rust protection

SYNTHETIC BLEND SAE / AVAILABLE SIZES

	QT	GAL	5 QT	5 GAL	55 GAL	TOTE
5W20				•	•	•
5W30				•	•	•
10W30	•			•	•	•

FULL SYNTHETIC SAE / AVAILABLE SIZES

	QT	GAL	5 QT	5 GAL	55 GAL	TOTE
5W20				•	•	•
5W30	•			•	•	•
10W30				•	•	•



Product Data



SYNTHETIC BLEND & FULL SYNTHETIC HEAVY DUTY

Specially engineered for heavy duty diesel and gasoline engines operating under all service conditions, including today's emission-controlled engines with EGR and diesel particulate filters using Ultra-Low Sulfur Diesel fuel (ULSD) and Low Sulfur Diesel (LSD). They provide extra protection and performance compared with conventional engine oil formulations, with excellent oxidation control and soot suspension characteristics to provide outstanding protection for extended drain intervals.

APPLICATIONS

- Meets or exceeds performance requirements for all naturally aspirated and turbo-charged four-stroke diesel engines in which the API CK-4 service category and preceding service categories and when 15W-40 or 10W-30 grades are recommended
- Formulated for engines operating under severe service conditions and a wide range of cold and hot temperatures

RECOMMENDATIONS:

Cummins-Approved	Caterpillar
Detroit Diesel-Approved	Ford
Mack-Approved	Global
Volvo-Approved	Man
Mercedes-Benz-Approved	MTU
Renault-Approved	and more
Allison	

For a complete list of manufacturer specifications, please refer to the Product Data Sheet (PDS).

SYNTHETIC BLEND SAE / AVAILABLE SIZES

	QT	GAL	5 QT	5 GAL	6 GAL ECO	55 GAL	TOTE
10W30		•		•		•	•
15W40	•	•		•	•	•	•

FULL SYNTHETIC SAE / AVAILABLE SIZES

	QT	GAL	5 QT	5 GAL	6 GAL ECO	55 GAL	TOTE
5W40		•		•	•	•	•
15W40				•		•	•



Product Data



Watch Product Video



Mercedes-Benz



RENAULT
Passion for life





PREMIUM HEAVY DUTY

Formulated with high viscosity index paraffinic base oils and select additive technology to provide superior thermal and oxidative stability. Protects against corrosion (EGR critical) and valve train wear, and to prevent the formation and accumulation of deposits and sludge.

APPLICATIONS

- For all modern, heavy duty diesel and gasoline engines calling for an SAE 30 engine oil, operating in both highway and off-highway conditions
- Meets or exceeds the CF-2 and CF service classifications

BENEFITS

- Protects from deposits at all operating temperatures
- Anti-foam and Anti-rust properties
- Soot control

SAE / AVAILABLE SIZES

	QT	GAL	5 QT	5 GAL	55 GAL	TOTE
10W			•	•	•	•
30W	•		•	•	•	•
50W			•	•	•	•



Product Data



PERFORMANCE

Premium-quality oil formulated for gasoline engines. It contains only the highest quality, hydro-treated, paraffinic lubricating oils and a technologically advanced additive system, which includes detergents, dispersants, viscosity improver, anti-wear and antifriction agents, and oxidation and corrosion inhibitors.

APPLICATIONS

- Licensed API SP and covers all preceding specifications
- For use in all domestic and foreign automotive gasoline-fueled passenger cars and light-duty trucks where an SAE 20W-50 is specified

BENEFITS

- Superior protection against thermal breakdown
- Excellent protection from deposits and sludge at all operating temperatures
- Provides oxidation stability
- Anti-corrosion and anti-wear protection

SAE / AVAILABLE SIZES

	QT	GAL	5 QT	5 GAL	55 GAL	TOTE
20W50	•		•	•	•	•



Product Data



▶▶▶ AIR-COOLED 2-CYCLE

STARFIRE Premium Air-Cooled 2-Cycle Oil is a high quality, low ash and sulfur free motor oil formulated for use in outboard motors, ATV's, snowmobiles, chain saws, lawnmowers, string trimmers, leaf blowers and other fuel-lubricated or fuel-injected 2-cycle engines requiring an air-cooled 2-cycle oil. It is formulated to prevent ring-sticking, to reduce spark plug fouling and to keep engines clean.

BENEFITS

- Multi-application usage
- Ideal for oil-injected and fuel/oil-lubricated engines
- Meets API TC, JASO FD and ISO-L-EGD

SAE / AVAILABLE SIZES

	24 - 2.6 OZ	24 - 6.4 OZ	QT	GAL	5 QT	5 GAL	55 GAL	TOTE
AIR COOLED	•	•	•	•		•	•	•



Product
Data

▶▶▶ MULTI-USE 2-CYCLE TC-W3®

Premium, high-quality motor oil formulated for use in lubricated engines requiring a liquid-cooled 2-cycle oil. It is formulated to prevent ring-sticking, to reduce spark plug fouling, and to keep engines clean.

BENEFITS

- Multi-application usage
- Ideal for oil-injected and fuel/oil-lubricated engines
- Meets API TC and JASO FB, TC-W3® specifications
- Licensed by National Marine Manufacturers Association (NMMA)

SAE / AVAILABLE SIZES

	QT	GAL	5 QT	5 GAL	55 GAL	TOTE
TC-W3	•	•		•	•	•



Product
Data



Transmission Fluid

SHIFT CONFIDENTLY. PERFORM CONSISTENTLY.

STARFIRE Premium and Full Synthetic transmission fluids are engineered with a specialized blend of high-quality base stocks and advanced additive technology. Designed to deliver smooth, reliable shifting and long-lasting protection, they meet—or exceed—modern OEM specifications in an industry that never stands still.

DEXRON®-III / MERCON® MULTI-PURPOSE

Multi-purpose automatic transmission fluid especially designed and engineered to extend transmission life and provide smooth operation for Ford and General Motors vehicles where a DEXRON®-III/MERCON® fluid is specified.

APPLICATIONS

- DEXRON® III H, DEXRON® III G, DEXRON® II, DEXRON®, AWI
- MERCON®, M2C138-CJ or M2C166-H fluids
- Allison C-4 fluids and Caterpillar TO-2 fluids
- In all 1979 through 2005 transmissions built by Ford (exceptions: Ford FMX and pre-1980 C-4 transmissions and where MERCON® V is required)

BENEFITS

- Wide range of seal compatibility
- Excellent wear protection and oxidation resistance
- Fortified against rust and corrosion
- Meets requirements for foam protection
- Superior frictional characteristics, with excellent friction and smooth shifting

SAE / AVAILABLE SIZES

	QT	GAL	5 QT	5 GAL	6 GAL ECO	55 GAL	TOTE
ATF	•	•		•	•	•	•



Product
Data

FULL SYNTHETIC DEXRON®-VI

High-performance, low viscosity multi-vehicle transmission fluid that is specially formulated for use in most planetary-gear transmission applications. It is approved for use in General Motors automatic transmissions calling for DEXRON® VI.

BENEFITS

- Full synthetic
- GM approved
- Protection against wear and transmission shudder
- Resistance to thickening due to high temperature
- Friction stability to maintain smooth, consistent shift performance

RECOMMENDATIONS:

Audi/VW	Hyundai	Peugeot
BMW	Kia	Porsche
Caterpillar	Idemitsu	SAAB
Chrysler	Isuzu	Saturn
Daewoo	Jaguar	Subaru
Daihatsu	Lexus	Suzuki
Esso	Mazda	Toyota
Fiat	Mercedes-Benz	Voith
Ford	Mitsubishi	Volvo
GM	Mopar	VW
Hino	Nissan	
Honda	Opel	

For a complete list of manufacturer specifications, please refer to the Product Data Sheet (PDS).

SAE / AVAILABLE SIZES

	QT	GAL	5 QT	5 GAL	6 GAL ECO	55 GAL	TOTE
DEX-VI ATF	•			•	•	•	•



**Product
Data**

FULL SYNTHETIC UNIVERSAL ATF

High-performance, low viscosity multi-vehicle transmission fluid that is specially formulated for use in most domestic and European planetary-gear automatic transmission applications.

BENEFITS

- Full synthetic
- Multi-vehicle use
- Protection against wear and transmission shudder
- Resistance to thickening due to high temperature
- Friction stability to maintain smooth, consistent shift performance

RECOMMENDATIONS:

Audi/VW	Hyundai	Peugeot
BMW	Kia	Porsche
Caterpillar	Idemitsu	SAAB
Chrysler	Isuzu	Saturn
Daewoo	Jaguar	Subaru
Daihatsu	Lexus	Suzuki
Esso	Mazda	Toyota
Fiat	Mercedes-Benz	Voith
Ford	Mitsubishi	Volvo
GM	Mopar	VW
Hino	Nissan	
Honda	Opel	

For a complete list of manufacturer specifications, please refer to the Product Data Sheet (PDS).

SAE / AVAILABLE SIZES

	QT	GAL	5 QT	5 GAL	55 GAL	TOTE
MV ATF	•			•	•	•



**Product
Data**

▶▶▶ FULL SYNTHETIC ATF+4®

Uniquely blended, full synthetic fluid designed to meet the specific requirements of Chrysler and FCA automatic transmissions/transaxles specifying any of the applications below.

APPLICATIONS

- Mopar ATF+4®, Mopar ATF+3®, Mopar ATF+2®, Mopar ATF+®
- Type MS-9602®
- Type MS-7176®

BENEFITS

- Excellent high and low temperature protection
- Resistance to thickening due to high temperatures
- Friction stability to maintain smooth, consistent shift performance

SAE / AVAILABLE SIZES

	QT	GAL	5 QT	5 GAL	55 GAL	TOTE
ATF+4	•			•	•	•



Product Data

▶▶▶ FULL SYNTHETIC CVT

Specially formulated and recommended for use in most belt or chain-driven Continuously Variable Transmissions, and it is not a replacement for ATF.

APPLICATIONS

Suitable for use in the following applications:

Audi/	Mazda
Volkswagen	Mercedes-Benz
BMW	Mini Cooper
Daihatsu	Mitsubishi
Dodge/Jeep	Nissan
Ford /Motorcraft	Renault
GM/Saturn	Subaru
Honda	Suzuki
Hyundai/Kia	Toyota

For a complete list of manufacturer specifications, please refer to the Product Data Sheet (PDS).

SAE / AVAILABLE SIZES

	QT	GAL	5 QT	5 GAL	55 GAL	TOTE
CVT	•			•	•	•



Product Data

6-GALLON ECO-BOX & DISPENSING SYSTEM

An innovative design that provides professional installers with a cost-effective alternative for offering a wider variety of STARFIRE motor oils and fluids. The innovative Eco-Box design reduces plastic packaging by as much as 85% when compared with quart packaging. The flexible bag-in-box design also provides a significant reduction in residual oil that would normally be left in conventional plastic packing, so there is less wasted product!

STARFIRE ECO-BOXES ARE AVAILABLE IN: FULL SYNTHETIC MOTOR OIL

- 0W-16
- 0W-20 dexos™ 1 Gen 3
- 5W-20
- 5W-30 dexos™ 1 Gen 3
- 5W-40 Heavy Duty
- 0W-20 Euro
- 0W-30 Euro
- 0W-40 Euro
- 0W-40 SP
- 5W-30 Euro
- 5W-40 Euro

SYNTHETIC BLEND MOTOR OIL

- 5W-20
- 5W-30
- 10W-30
- 15W-40 Heavy Duty

AUTOMATIC TRANSMISSION FLUID

- Multi-Purpose ATF DEXRON® III/MERCON®
- Full Synthetic LV Multi-Vehicle DEXRON® VI ATF

BENEFITS

- Space-saving rack dispensing system
- Quick access to up to 6 different products
- User-friendly dispensing system
- Inventory cost savings



Gear Lubricants

HEAVY-DUTY GEAR PROTECTION FOR THE LONG HAUL

STARFIRE gear lubricants are built to handle the demands of today's diverse, high-performing fleets. Formulated with premium paraffinic base stocks and a robust sulfur-phosphorus EP additive system, they deliver the extended protection and durability your equipment needs—mile after mile, job after job.





PREMIUM GEAR LUBRICANT

Multi-purpose lubricants designed for service in automotive and heavy duty applications. They provide excellent thermal and oxidative stability, anti-foam, anti-rust and anti-corrosion protection, and excellent load-carrying capabilities.

Note: These products are not approved for Eaton Roadranger and ArvinMeritor extended warranties.

APPLICATIONS

- STARFIRE GL-5 Gear Lubricant meets the API GL-5 Service Designation as well as the MIL-L-2105F and MIL PRF 2105E and is suitable for use in limited-slip differentials
- Also suitable for use in Mack GO-H & GO-J and Proposed PG-1/PG-2 Service Designations, Scania ST0 110, MERITOR®-076D (80W90), and MERITOR®-076A (85W140), MAN 342 M2 (160,000 km), and MB 235
- Meets API MT 1. For use when extreme-pressure (EP) gear oils are required: in all heavy duty truck differentials, in all domestic automobile differentials and some manually shifted transmissions, heavy duty manually shifted truck transmissions requiring API MT 1 performance, and oil-lubricated wheel bearings

SAE / AVAILABLE SIZES

	QT	GAL	5 QT	5 GAL	55 GAL	TOTE
80W90	•	•		•	•	•
85W140	•	•		•	•	•



Product Data

FULL SYNTHETIC GEAR LUBRICANT

Multi-purpose lubricants designed for service in automotive and heavy-duty applications. Formulated with synthetic base stocks and a sulfur-phosphorus extreme-pressure additive package with friction modifier, which provides excellent thermal and oxidative stability as well as excellent load-carrying capabilities.

APPLICATIONS

STARFIRE Full Synthetic 75W-90, 75W-140 and 80W-140 Gear Lubricants are suitable for use in the following applications:

- API GL-5
- API MT-1
- MIL-PRF-2105E and MIL-PRF-2105D
- Mack GO-J, GO-H
- PG-2 limited slip differentials

BENEFITS

- Provides excellent protection against wear under extreme pressure and high torque operation
- High resistance to thermal breakdown
- Helps prevent foaming, rust, and corrosion

SAE / AVAILABLE SIZES

	QT	GAL	5 QT	5 GAL	16 GAL KEG	55 GAL	TOTE
75W90	•			•	•	•	•
75W140	•			•	•	•	•
80W140				•	•	•	•



Product Data

FULL SYNTHETIC GEAR LUBRICANT

75W-80 GL-4

- A high performance synthetic lubricant for certain manual transmissions, transfer cases, and gear boxes requiring specialized fluid meeting OEM specifications and the technical requirements of API GL-4.

APPLICATIONS

API MT-1	Navistar 6816
Mack TO-A Plus	Volvo I-Shift
Mack m-Drive	Volvo 1273.05 (97305)
Meritor O81	500,000 mile drain capable

75W-85 GL-5

- Popular in many late model BMW, Dodge, Focus RS, Jeep, Mercedes-Benz differentials, Toyota light truck, Lexus differentials and transfer cases, Formula racing transaxles, including Hewland LD-200 and FTR sequential
- Contains additional friction modifiers for suitability with clutch-type limited slip differentials - for most LLSDs, no additional friction modifiers are required
- Not designed for use in most manual transmissions or transaxles with synchronizers, as extreme slipperiness may cause shifting problems
- Ester base stocks and friction modifiers for additional slipperiness to lower operating temperatures by reducing sliding friction in hypoid gears
- Superior shear stability and reduced oxidation compared to other synthetic and conventional gear oils
- Also satisfies the gear oil viscosity requirements SAE 30 and SAE 10W30

APPLICATIONS

Acura - HGO-1	Honda - HGO-1
Audi - G052196A2, G052190A2, G055190A2	Mercedes-Benz - MB 235.62, MB 235.7, MB 235.74, MB 239.71, MB 239.72, MB 235.15, MB 231.1
BMW - BMW 83222239982, BMW 83222295532, BMW 83222413511, BMW 83120445838, BMW 83222413512, BMW 83222447362	Military Gear Oil - MIL-L-2105 D
Chrysler MOPAR	Toyota - JWS 2273
GM Part #19417365	VW - G 052 196 A2, G 052 190 A2, G 055 190 A2, G 052 513
GMC AC Delco	ZF - TE-ML 18

SAE / AVAILABLE SIZES

	5 GAL	16 GAL KEG	55 GAL	TOTE
75W80	•	•	•	•
75W85	•	•	•	•



**Product
Data**

▶▶▶ FULL SYNTHETIC TRANSMISSION 40W & 50W

STARFIRE Full Synthetic 40W & 50W Transmission Oil are specially formulated for service in heavy duty commercial vehicle transmissions which require a non-EP transmission lubricant. They are specially designed to protect higher torque transmissions coupled with increased horsepower engines.

APPLICATIONS

- API MT-1
- Eaton PS-386, PS-164 Rev 7
- International TMS 6816
- Mack TO-A Plus
- MERITOR® O-81 (Publication TP-90014)
- ZF Freedomline
- Dana synchronized and non-synchronized transmissions

BENEFITS

- Excellent high and low temperature performance
- Helps prevent foaming, rust, and corrosion
- Provides friction retention, friction durability, and excellent shear stability to help ensure and maintain smooth transmission operations.

SAE / AVAILABLE SIZES

	5 GAL	16 GAL KEG	55 GAL	TOTE
40W	•	•	•	•
50W	•	•	•	•



Product Data



Watch Product Video

▶▶▶ FULL SYNTHETIC AT668

STARFIRE Full Synthetic AT668 is a fully synthetic transmission fluid that is suitable for use when an application is calling for the Allison TES 668® specification. The fluid is designed to meet the demanding requirements of modern heavy duty automatic transmissions.

FEATURES

- Enhanced, long-term frictional properties
- Exceptional thermal and oxidation stability.
- Outstanding film-strength and anti-wear properties

- Excellent low-temperature fluidity

SUITABLE FOR USE:

- Allison TES 668
- Allison TES 295

SAE / AVAILABLE SIZES

	5 GAL	16 GAL KEG	55 GAL	TOTE
AT668	•	•	•	•



Product Data



Hydraulic Oils

HYDRAULIC PERFORMANCE THAT WON'T LET UP

STARFIRE hydraulic oils are engineered to perform in all major OEM equipment. Packed with advanced anti-wear, oxidation, corrosion, rust, and foam control additives, these fluids are designed to protect systems under pressure—extending equipment life and keeping operations running smoothly in every application.

ANTI-WEAR (AW) HYDRAULIC OIL

Formulated from select base stocks and advanced additive technology to deliver ultimate equipment protection and extended operating life.

APPLICATIONS

Recommended for hydraulic pumps and hydraulic and high-pressure circulating systems requiring:

- Parker Hannifin (Denison) HF-O, HF-1, HF-2
- Eaton Vickers 35VQ25A Pump, M-2950-S, I-286-S
- Cincinnati Milacron P-68, P-69, P-70
- DIN 51524 Part 2, 3

BENEFITS

- Outstanding wear protection
- Excellent resistance to system rust and oil oxidation
- Maintains excellent water-separating properties
- Excellent foam control and air release deliver consistent system operation

SAE / AVAILABLE SIZES

	QT	GAL	5 QT	5 GAL	55 GAL	TOTE
AW 32		•		•	•	•
AW 46		•		•	•	•
AW 68		•		•	•	•



Product
Data



Watch
Product
Video

NON-DETERGENT LUBRICATING OILS

Manufactured using highly refined base oils for increased lubrication and wear protection in operating conditions which do not require a detergent oil.

APPLICATIONS

- Light engines calling for non-additive motor oil
- Compressors
- Circulating oil
- Low-pressure hydraulic systems

BENEFITS

- Superior anti-foam control
- Wide range of applications

SAE / AVAILABLE SIZES

	QT	GAL	5 QT	5 GAL	55 GAL	TOTE
ND-10W				•	•	•
ND-30W	•			•	•	•
ND-50W				•	•	•



CAUTION: This oil is rated API SA. It contains no additives. It is not suitable for use in most gasoline-powered automotive engines built after 1930. Use in modern engines may cause unsatisfactory engine performance or equipment harm.



Product
Data

MEF-3 MOBILE EQUIPMENT FLUID

Field-tested in farm, construction, and logging equipment. This multi-purpose hydraulic lubricant is an economical lubricant suited for equipment that requires frequent fluid replacement.

APPLICATIONS

- Multi-purpose lubricant applications
- Older, aging equipment
- Not recommended for equipment manufactured after 1974

BENEFITS

- Anti-wear protection
- Good seal compatibility
- Protection against rust and oxidization
- Economical multi-purpose lubricant

SAE / AVAILABLE SIZES

	QT	GAL	5 QT	5 GAL	55 GAL	TOTE
MEF-3				•	•	•



Product Data



Watch Product Video

PREMIUM TRACTOR HYDRAULIC FLUID

Recommended for use in all major OEM equipment. Designed for use in a variety of farm equipment, off-highway machinery, industrial tractors, final drives, power takeoff units, wet brakes, power steering units, and hydraulic systems. It provides the unique combination of ultimate equipment protection and the convenience of using one fluid in place of two or more fluids while maintaining optimum component performance and durability.

APPLICATIONS

John Deere: J20C	J.I. Case
International Harvester	Case New Holland
AGCO (Massey Ferguson)	Kubota
AGCO-Allis	Volvo
	Caterpillar

BENEFITS

- Superior wear protection to protect critical components
- Excellent frictional properties for smooth shifting
- Excellent anti-shudder performance
- Good seal compatibility
- Protection against varnish and sludge formation
- Superior thermal stability and oxidation resistance

SAE / AVAILABLE SIZES

	QT	GAL	5 QT	5 GAL	55 GAL	TOTE
PREM UTH		•		•	•	•



For a complete list of manufacturer specifications, please refer to the Product Data Sheet (PDS).



Product Data



Watch Product Video

Antifreeze/Coolants

PROTECTION IN ALL TEMPERATURES

From light-duty vehicles to extended-life and extreme heavy-duty systems, STARFIRE antifreeze/coolants are engineered to perform in nearly every modern cooling system. Available in both 50/50 pre-diluted and concentrate formulas, they deliver the protection and reliability hard-working engines demand.





CONVENTIONAL GREEN

Premium ethylene glycol-based antifreeze that provides all-season protection and, when used as directed, offers superior protection against:

- Freeze-up
- Boil over
- Scale buildup
- Rust corrosion
- Sludge/clogging
- Wet sleeve liner pitting

APPLICATIONS

- Meets light duty ASTM D-3306 and heavy duty ASTM D-6210, TMC RP329
- One universal product for light duty and heavy duty applications
- No need to add SCAs or chemical filters
- Compatible with all conventional green antifreeze

Meets the following OEM Specifications:

Case	GM
Caterpillar	GMC Truck
Chrysler	International
Detroit Diesel	John Deere
Ford	Mack
Freightliner	Military
GE Locomotive	Orion/MCI Coaches

For a complete list of manufacturer specifications, please refer to the Product Data Sheet (PDS).

Available in concentrate and pre-diluted formulas.

AVAILABLE SIZES

	QT	GAL	5 QT	5 GAL	55 GAL	TOTE
GREEN		•		•	•	•



Product Data



ALL MAKES ALL MODELS

A true universal antifreeze/coolant that can be used as a top-off or a complete flush and fill in virtually any application. Its HOAT chemistry is designed for both light duty automotive and heavy duty diesel use. STARFIRE All Makes All Models is a premium ethylene glycol-based product and, when mixed with water and used as directed, offers superior protection against:

- Freeze-up
- Boil over
- Scale buildup
- Rust corrosion
- Sludge/clogging
- Wet sleeve liner pitting

APPLICATIONS

- Meets light duty ASTM D-3306 and heavy duty ASTM D-6210, TMC RP329
- One universal product for light duty and heavy duty applications
- Perfect choice for mixed fleets; no need to add SCAs
- Phosphate free and low silicate - the choice for Japanese and Korean models
- Light duty - 5 years/150,000 miles;
heavy duty - 3 years/300,000 miles

Meets the following OEM Specifications:

Case	GE Locomotive
New Holland	GM
Caterpillar	International
Chrysler	John Deere
Cummins Engine	Komatsu
Detroit Diesel	Mercedes
Ford	Navistar
Freightliner	Volvo Trucks

For a complete list of manufacturer specifications, please refer to the Product Data Sheet (PDS).

Available in concentrate and pre-diluted formulas.

AVAILABLE SIZES

	QT	GAL	5 QT	5 GAL	55 GAL	TOTE
AMAM		•		•	•	•



Product Data



PURECOOL EXTENDED LIFE

A premium, virgin, ethylene glycol-based product that may be used in all GM vehicles that require DEX-COOL® coolant, as well as other cars and light duty trucks recommending an extended life coolant.

APPLICATIONS

- Meets GM 6277M, ASTM D3306 and ASTM D4985
- May be added to conventional antifreeze/coolant
- Protects aluminum and ANY other engine metals
- Meets GM and Ford performance specifications
- DEX-COOL® is a registered trademark of GM Corporation

Available in concentrate and pre-diluted formulas.

AVAILABLE SIZES

	QT	GAL	5 QT	5 GAL	55 GAL	TOTE
PURECOOL		•		•	•	•



Product Data



PUREFLEET HEAVY DUTY ELC

When used as directed, offers superior performance in virtually every light and heavy duty application. The proprietary inhibitor package is low silicate and phosphate/2-EH free. Can be used as a top-off, but to achieve maximum protection, a complete flush and fill should be performed. Provides protection against:

- Freeze-up
- Scale buildup
- Sludge/clogging
- Boil over
- Rust corrosion
- Wet sleeve liner pitting

APPLICATIONS

- Meets light duty ASTM D-3306 and heavy duty ASTM D-6210, TMC RP329 and Caterpillar EC-1
- One product for light duty and heavy duty applications
- Perfect choice for mixed fleets; no need to add SCAs
- Blended with pure deionized water for your quality needs
- Phosphate free and low silicate - the choice for Japanese and Korean models
- Light duty - 5 years/150,000 miles
- Heavy duty - 3 years/300,000 miles
- Compatible with hybrid and OAT coolants

Meets the following OEM Specifications:

Case New Holland	GM
Caterpillar	International
Chrysler	John Deere
Cummins Engine	Komatsu
Detroit Diesel	Mercedes
Ford	Navistar
Freightliner	Volvo Trucks
GE Locomotive	

For a complete list of manufacturer specifications, please refer to the Product Data Sheet (PDS).

Available in concentrate and pre-diluted formulas.

AVAILABLE SIZES

	QT	GAL	5 QT	5 GAL	55 GAL	TOTE
HD ELC		•		•	•	•



Product Data

▶▶▶ PUREFLEET EXTREME HEAVY DUTY ELC

A premium, virgin, ethylene glycol-based heavy duty antifreeze/coolant that contains a proprietary polyorganic/multi-organic acid technology inhibitor system. It provides total cooling system protection without the use of additive-containing coolant filters or supplemental coolant additives (SCAs).

APPLICATIONS

- Meets ASTM D3306, ASTM D4985, ASTM D6210, TMC RP-329/330 and Caterpillar EC-1
- Compatible with ALL types of coolant technologies, including conventional inorganic acid salt formulations, straight organic acid (OAT) formulations, hybrid organic acid formulations (HOAT), nitrated HOAT formulations (NOAT), and other poly-organic acid formulations
- Provides up to 750,000 miles of total cooling system protection
- Suitable for passenger cars, vans, SUVs, light trucks, heavy duty fleet vehicles and many off-road applications such as stationary engine cooling systems

Meets the following OEM Specifications:

Audi	Mazda
BMW	Mercedes-Benz
Caterpillar	Mitsubishi
Chrysler	Navistar/International
Cummins	PACCAR: Kenworth,
Detroit Diesel	Peterbilt
Ford	Porsche
GM	Saab
Honda	Suzuki
Hyundai	Toyota
Isuzu	Volkswagen
John Deere	Volvo

For a complete list of manufacturer specifications, please refer to the Product Data Sheet (PDS).

Available in concentrate and pre-diluted formulas.

AVAILABLE SIZES

	QT	GAL	5 QT	5 GAL	55 GAL	TOTE
EXT HD ELC		•		•	•	•



Product Data



Watch Product Video



Grease

GREASE UNDER PRESSURE

STARFIRE greases are designed to perform under pressure. Engineered for exceptional water resistance and fortified for protection against extreme wear and corrosion, they're ready to work in automotive, construction, and industrial applications—no matter the conditions.

HI-TEMP RED EP 2

Recommended for most automotive and industrial applications, including trucks, automobiles, construction equipment and heavy duty industrial service. Commonly recommended for wheel bearings, U-joints, chassis, and fifth wheels, as well as heavy duty industrial ball, roller and sleeve bearing designs. Licensed with NLGI to meet NLGI GC/LB specifications for automotive wheel bearings and chassis lubrication.

BENEFITS

- High-temperature capability
- Excellent thermal and mechanical stability
- Oxidation and rust resistance
- Excellent water resistance
- Good low-temperature pumpability
- Extreme pressure additive
- Compatible with lithium or lithium complex greases
- Excellent adhesion properties, tacky consistency

AVAILABLE SIZES

	10/14 OZ	35 LB	120 LB	400 LB
HT	•	•	•	•
RED	•	•	•	•



Product
Data

MULTI-PURPOSE EP 2

Recommended for moderate speed and temperature applications. Suitable for bearing temperatures up to 121°C (250°F) and down to -12.2°C (10°F). Lithium hydroxystearate thickener and extreme pressure (EP) additives provide excellent lubrication performance for automotive chassis, electric motor bearings, universal joints, fifth wheels and general-purpose bearing lubrication.

AVAILABLE SIZES

	10/14 OZ	35 LB	120 LB	400 LB
MP	•	•	•	•



Product
Data



3% MOLY EP 2

A high-quality multi-purpose grease for construction, industrial and transportation service. It has a lithium complex thickener for compatibility with a wide range of industrial greases. Fortified with 3% molybdenum disulfide for additional EP protection. Also recommended for high-temperature service.

APPLICATIONS

- Can be used in any ball or roller bearing application.
- It is specifically designed for use in heavy duty construction equipment where high shock loads and water wash-out are required.
- NLGI GC-LB performance guarantees excellent wheel bearing performance.
- Molybdenum disulfide provides EP protection when the bulk grease has dissipated. This is vital for reciprocating bearings such as backhoe knuckle bushings and universal joints

FEATURES

- Excellent extreme pressure properties
- High shock load resistance
- Excellent rust and corrosion protection
- Outstanding oxidation stability

SPECIFICATIONS

- Caterpillar multi-purpose grease with 3% Moly

AVAILABLE SIZES

	10/14 OZ	35 LB	120 LB	400 LB
MOLY	•	•	•	•



Product Data



EPEX™ CS EP2

Calcium Sulfonate is recommended for lubrication of machinery operating at high temperatures where protection under severe sliding conditions and shock loading are important. Examples include mining and construction equipment, heavy-duty truck chassis, spring shackles, king pins, tie rods, u-joints, hinge and bucket pins and fifth wheels.

FEATURES

- High dropping point
- Excellent protection against sliding wear
- Exceptional mechanical stability
- Excellent protection from corrosion and water washout.
- High load carrying properties
- Excellent thermal stability

AVAILABLE SIZES

	10/14 OZ	35 LB	120 LB	400 LB
CS2 EP2	•	•	•	•



Product Data

Functional Fluids

FUNCTIONAL FLUIDS THAT DO MORE

STARFIRE functional fluids—including aerosols and pour chemicals—are designed to enhance performance across the board. From boosting fuel efficiency to extending engine life. Your equipment will run cleaner, longer, and more efficiently—every mile, every job.





BRAKE FLUID

STARFIRE Brake Fluids meet or exceed the high standards of performance and safety for DOT 3 and DOT 4 fluids.

APPLICATIONS

- For all disc and drum brake systems, including ABS, in which a DOT 3 or DOT 4 fluid is recommended
- Complies with Federal Motor Vehicle Safety Standard (FMVSS) No. 516.116
- Surpasses SAE Spec. J1703 (DOT 3), SAE Spec. J1704 and ISO 4925 (DOT 4)
- Minimum wet boiling point 284°F (140°C)

AVAILABLE SIZES

	12/12 OZ	QT	GAL	5 QT	5GAL	55 GAL	TOTE
DOT 3	•	•	•		•	•	•
DOT 4		•					



Product Data



POWER STEERING FLUID

Provides optimum protection in power steering systems of both foreign and domestic automobiles. Controls seal swelling and protects pump parts against wear while providing the proper friction coefficient for system operation.

APPLICATIONS

- Suitable for use in most passenger car and light truck applications
- NOT recommended for systems where special fluids are specified, e.g., Saab, Honda, Mercedes-Benz, etc.

AVAILABLE SIZES

	12/12 OZ	QT	GAL	5 GAL	55 GAL	TOTE
PSF	•	•	•	•	•	•



Product Data

▶▶▶ MOTR TREATMENT

Specially formulated fuel and carburetor cleaner for use in gas and diesel engines. It helps reduce hesitation and rough idle and eliminates noisy lifters. It also eliminates moisture and ice problems. Great for use in cars, trucks, boats, tractors and small engines.

APPLICATIONS

- Any gasoline or diesel engine
- Oil treatment in crankcase
- Fuel treatment during fill-up

BENEFITS

- Upper cylinder lubricant
- Adds lubricity to fuel
- Cleans up motor sludge
- Removes varnish



Product Data

▶▶▶ AIR BRAKE ANTIFREEZE AND CONDITIONER

Helps clean, condition and protect all air brake systems. Contains no ingredients or residues which can corrode brake line systems. It contains only the purest anhydrous-grade methanol.

BENEFITS

- Prevents moisture and freeze-ups, even in sub-zero weather
- Rust and corrosion inhibitor
- Works in all air brake systems
- Ultra-pure formula

AVAILABLE SIZES

	QT	GAL	5 QT	5 GAL	55 GAL	TOTE
AIR BRAKE	•				•	



Product Data

STARFIRE DEF

A mixture of 32.5% high-purity urea and 67.5% deionized water that is used in Selective Catalytic Reduction (SCR) systems on diesel engines.

BENEFITS

- API licensed
- Meets or exceeds all OEM specifications
- Conforms to ISO 22241-1 specification for DEF

HANDLING

- Use only dedicated DEF equipment when handling/dispensing DEF, and keep dispensing equipment clean and free of dirt or other contaminants
- DO NOT add DEF to diesel fuel tank
- DO NOT add diesel fuel to DEF tank
- DO NOT add water to DEF

AVAILABLE SIZES

	GAL	2/2.5 GAL	5 QT	5 GAL	55 GAL	TOTE
DEF	•	•			•	•



Product Data



STARFIRE SNOW PLOW HYDRAULIC OIL

STARFIRE Snow Plow Hydraulic Oil is a high quality extreme performance hydraulic oil designed for use in wide temperature range hydraulic applications. STARFIRE Snow Plow Hydraulic Oil meets the stringent performance requirements of an anti-wear hydraulic oil in severe duty all season applications.

BENEFITS

- Excellent Low Temperature Properties
- Excellent Rust and Corrosion Protection
- Outstanding Anti-Wear Protection
- Excellent Water Shedding properties

APPLICATIONS

- Cincinnati Milacron - P-68, P-69, P-70
- Denison HF-0, HF-2
- DIN 51524 Part 2, Part 3
- ISO 11158 Type HV
- US Steel 127, 136
- DIN 51524, Part 2, Part 3
- AFNOR E-48-603
- Vickers I-2863, M-2950-S

AVAILABLE SIZES

	12/10QT	5 GAL	55 GAL	TOTE
DEF	•	•	•	•



Product Data

TEC-A AEROSOLS

Aerosol products provide a convenient, efficient and cost-effective way to apply the necessary lubricant or chemical for your application.

TEC-A-BRAKE®

LOW VOC BRAKE & PARTS CLEANER

Non-chlorinated formula that quickly and effectively removes grease, brake dust, brake fluids, oils, and other contaminants. Do not use on electrical motors or circuits and avoid contact with rubber and plastic.

APPLICATIONS

- ABS
- Discs
- Drum
- Brake cylinders, drums, linings, shoes
- Clutch discs
- Disc brake pads

BENEFITS

- Fast drying
- Removes grease, oil, brake fluid and other contaminants from disc and drum brake components instantly
- Leaves no residue
- Cleans without disassembly
- Helps stop brake squeaking and can improve braking performance
- 10% and 45% VOC formulas available



Product Data



Watch Product Video

TEC-A-START® STARTING FLUID

Professional-grade engine starting fluid. It is a balanced formulation combining active, volatile solvents, upper cylinder lubricant and corrosion inhibitors, each designed to play a vital part in starting engines.

APPLICATIONS

- Cars, trucks, buses, tractors
- Motorbikes and motorcycles
- Chainsaws
- Boats (inboard and outboard)
- Go-carts
- Stationary engines
- Compressors
- Diesel, gasoline, and kerosene engines
- 2-cycle and 4-cycle engines

BENEFITS

- Ensures fast, economical starting of all diesel and gasoline engines
- Reduces starter motor and spark plug wear
- Saves battery strain and engine wear during cold start
- Equipped with the 360° (upside down) spray valve and extension tube for added convenience



Product Data

TEC-A-CARB™ CARB/CHOKER CLEANER

Quickly dissolves and removes harmful carbon, gum, sludge and varnish deposits from throttle plates, manifold heat control valves, PCV valves, automatic chokes, combustion chambers, and carburetor linkages and passages. Serves as an excellent penetrant to free hard-to-reach passages and sliding surfaces that are clogged or bound by gum, carbon, or corrosive deposits. Safe for oxygen sensors and catalytic converters.

BENEFITS

- Quickly dissolves deposits
- Restores performance
- Removes varnish
- Non-chlorinated



Product
Data

TEC-A-GLASS™ GLASS CLEANER

Quickly cleans glass, mirrors, windshields and windows. Its clinging foam formula quickly removes fingerprints, smudges, lipstick, light grease, bugs, dust, dirt, smoke film and other residues from glass surfaces. Dries quickly, requires no rinsing, and leaves a pleasant, fresh aroma.

APPLICATIONS

- Industrial
- Commercial
- Institutional
- Automotive
- Household

BENEFITS

- Clinging foam formula—no dripping or running
- Leaves a streak-free shine
- No ammonia
- Dries quickly
- Pleasant, fresh scent
- Ergonomically designed spray tip for maximum comfort during use



Product
Data

TEC-A-NUT™ PENETRATING OIL

Fast-acting penetrant that quickly cuts through grease, penetrates corrosion and dissolves rust to free seized parts. Gets into cracks and crevices to displace water and leave a protective film to protect against rust and corrosion.

APPLICATIONS

- Loosens, cleans, lubricates, and protects nuts/bolts, lock mechanisms, hinges, pipe threads, lug nuts and equipment subject to moisture

BENEFITS

- Helps free seized parts
- Displaces moisture
- Silences squeaks
- Non-chlorinated spray valve and extension tube for added convenience



Product
Data

POUR CHEMICALS

Specially formulated to improve performance and extend engine and component life.

▶▶▶ FUEL INJECTOR & CARB CLEANER

Uses the latest technology in gasoline detergency to clean and lubricate fuel injectors and carburetors and restore fuel flow and performance.

BENEFITS

- Cleans fuel system as you drive
- Dissolves gum and varnish
- Contains no alcohol
- Restores lost power
- Reduces rough idle and stalling
- Increases Mileage
- Will not harm catalytic converters or oxygen sensors

▶▶▶ GAS TREATMENT

A special blend of powerful cleaners designed to clean the entire fuel system of gum, varnish, and deposits. Will not harm catalytic converters or oxygen sensors. Works with both fuel injectors and carburetors.

BENEFITS

- Cleans as you drive
- Restores lost power
- Reduces rough idle and stalling

▶▶▶ OCTANE BOOSTER

Designed to restore lost power, reduce hesitation and stalling, and prevent difficult starting.

BENEFITS

- Cleans fuel system as you drive
- Restores fuel flow
- Dissolves fuel system deposits
- Effective with methanol and alcohol fuel mixtures

▶▶▶ OIL TREATMENT

Advanced formula designed to provide a protective barrier against friction and heat.

BENEFITS

- Improves oil viscosity
- Can be added between drains to fortify the oil
- Keeps engine parts clean
- Coats engine with a tough, slippery film that resists heat and pressure
- Protects against corrosion



Product Data



Product Data



Product Data



Product Data





Ancillary Products

EVERYDAY ESSENTIALS. ALL IN ONE PLACE.

From windshield washer fluid and bar & chain oil to hand cleaner and absorbents, STARFIRE has the everyday products that keep your operation running smoothly—from one trusted source. So you can spend less time tracking down supplies and more time getting the job done.

RV & MARINE ANTIFREEZE

An economical alternative for the winterization of campers, RVs, boats, summer homes and potable water systems. Burst protection available in -50° F and -100° F formulations.

BENEFITS

- 2 formulations: ethanol blend and PG only
- No mixing required
- Non-toxic
- Safe for freshwater systems

AVAILABLE SIZES

	QT	GAL	5 QT	5 GAL	55 GAL	TOTE
RV-50		•		•	•	•
RV-100					•	•



Product Data

WINDSHIELD WASHER FLUID

Formulated to provide the additional freezing protection that water just cannot provide. Clears windshields of dirt, bug stains, frost, and ice.

BENEFITS

- No mixing necessary
- Freeze protection to -20°F
- Harmless to car finishes

AVAILABLE SIZES

	QT	GAL	5 QT	5 GAL	55 GAL	TOTE
WWF		•			•	•



Product Data

WINDSHIELD WASHER CONCENTRATE

BENEFITS

- Lowers freeze point on existing fluid that was subject to alcohol evaporation
- Environmentally conscious with reduced plastic packaging
- Saves inventory space

AVAILABLE SIZES

	24/16 OZ	5 GAL	55 GAL
WWC	•	•	•



Product Data



PURPLESTAR DEGREASER

Powerful, concentrated, non-hazardous cleaner and degreaser. Special deep-cleaning formulation separates, entraps and removes grease, dirt, oil, and grime from almost every type of surface.

APPLICATIONS

- Works in manual, mechanical and pressure-washing systems
- Concentrated
- Dilute up to 20:1

BENEFITS

- Non-flammable, non-abrasive
- Water based
- Readily biodegradable and solvent (VOC) free
- Safe to use on any water-washable surface or material
- Rinses quickly for residue-free surfaces
- Retards post-cleaning rusting and oxidation

AVAILABLE SIZES

	QT	GAL	5 QT	5 GAL	55 GAL	TOTE
PS				•	•	•



Product Data



INDUSTRIAL BAR & CHAIN OIL

Premium lubricant designed to prevent rusting and reduce wear and link breakage, thus extending bar and chain life. High tackifier formula provides maximum resistance to dropping and throw-off, even at the highest speeds. High viscosity index makes it an excellent choice for commercial bar and chain applications.

APPLICATIONS

- Commercial logging operations
- Professional tree-trimming services
- Professional clearing operations
- Homeowners seeking premium-grade protection

AVAILABLE SIZES

	QT	GAL	5 QT	5 GAL	55 GAL	TOTE
BAR & CHAIN		•		•	•	•



Product Data



INDUSTRIAL HAND CLEANER

Non-solvent industrial hand soap that's formulated with natural walnut scrubbers for the toughest cleaning without drying out your hands. Multiple emollients and conditioners moisturize chapped skin with repeated use.

APPLICATIONS

- Use on hands to liquify and remove stubborn industrial soils, grease, oil, tar, ink, paint and more

BENEFITS

- An official USDA-certified biobased product. The superconcentrated formula reduces hand soap use by up to 75%. Leaves no greasy residue.



Product Data



GRIME TIME HEAVY DUTY HAND & SURFACE WIPES

Built for ultimate performance. The abrasive side cuts through the toughest soils, while the smooth side allows for wiping the most delicate surfaces. Fortified with new-generation cleaning agents and unmatched skin conditioners.

APPLICATIONS

- Use on grease, grime, oil, and many other soils
- Use as a hand cleaner or surface wipe to take on the toughest jobs

BENEFITS

- Multi-purpose
- Two-sided cleaning wipe
- Fortified with skin conditioners



Product Data



ZOMBIE DRY ABSORBENT

Kiln-dried, calcined and milled natural Montmorillonite Clay (CAS # 70892-59-0) with lower bulk density, higher absorptive capacity, higher surface area and high hardness (low solubility).

SCREEN SIZE*

U.S.A. Standard Test Sieve (ASTME-II)	
+10 MESH.....	5%
+20 MESH.....	50%
+50 MESH.....	40%
+PAN	<5%
	(100.00%)

*Typical analysis of standard product, individual results may vary.



Product Data



MULTI-PURPOSE ABSORBENT

Kiln-dried, calcined and milled natural Montmorillonite Clay (CAS # 70892-59-0) with medium bulk density, medium absorptive capacity, average surface area and high hardness (low solubility).

SCREEN SIZE*

U.S.A. Standard Test Sieve (ASTME-II)	
+4 MESH.....	0%
+6 MESH.....	16%
+10 MESH.....	40%
+20 MESH.....	35%
+30 MESH.....	5%
+60 MESH.....	<5%
+PAN	<0.5%
	(100.00%)

*Typical analysis of standard product, individual results may vary.



Product Data

Powered by Partnership.



Built for Growth.



WE'RE BUILT TO KEEP YOU MOVING TODAY AND TOMORROW

At STARFIRE, we're not just keeping up—we're building ahead. With expanded packaging lines, smarter distribution, and an even broader product lineup, we're investing in what matters most: your ability to grow, compete, and win. Whether you're running a shop, a fleet, or a field operation, you can count on us to keep delivering the fluids, service, and support that fuel your success—not just now, but for the long haul.

STAY CONNECTED. STAY INFORMED.

Follow, like, and subscribe to
STARFIRE on social media.



DISTRIBUTED BY:

.....



8383 Bilstein Blvd.
Hamilton, OH 45015
888-258-8723
STARFIRE.COM

©2026 Coolants Plus Inc.