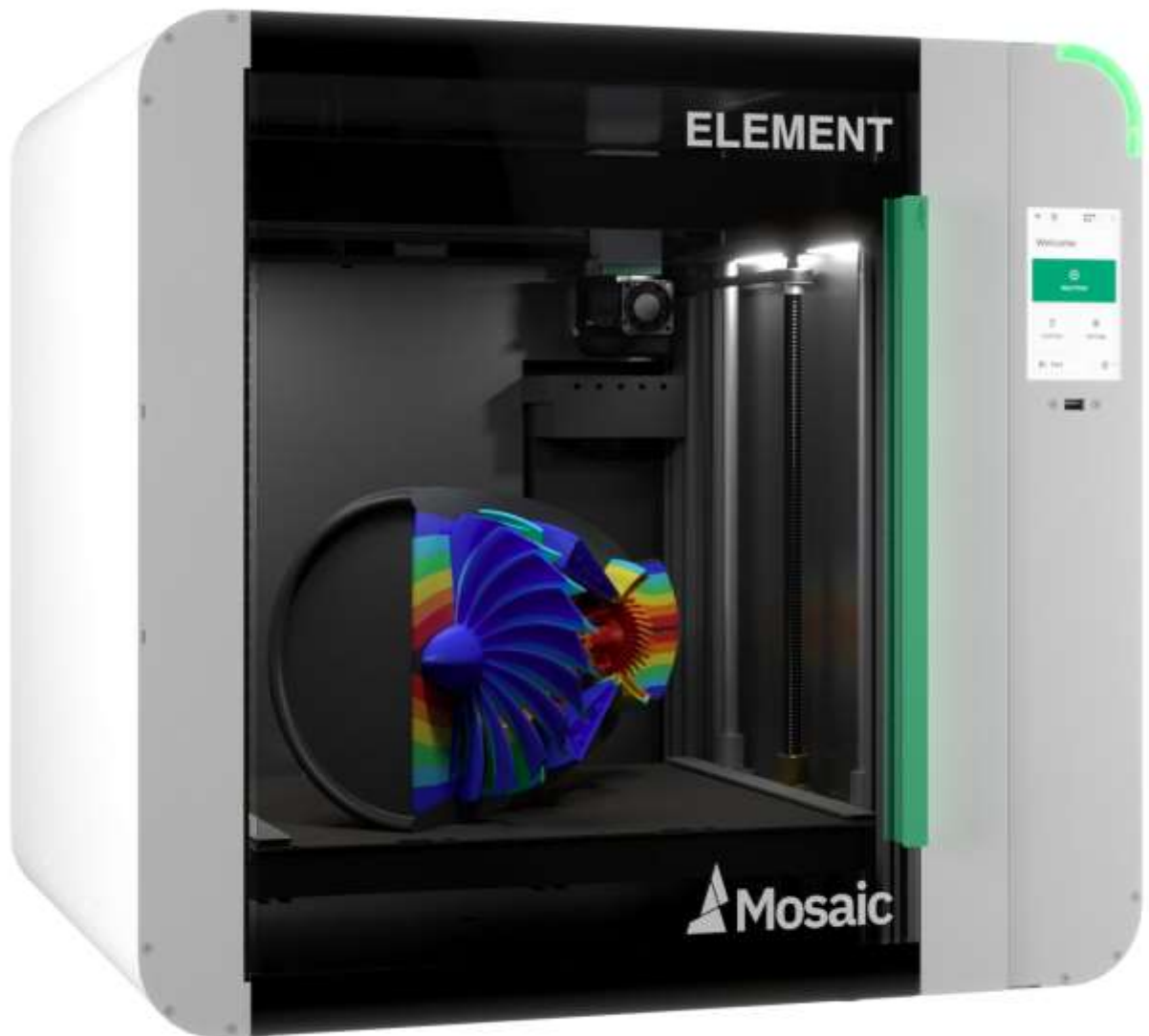


ELEMENT from Mosaic Manufacturing

RELIABLE, FLEXIBLE & INTUITIVE



<h2>BEST-IN-CLASS PRINTER FOR PERFORMANCE, UPTIME & PRODUCTIVITY</h2>	
<p>Experience a new level of 3D printing potential with Mosaic's new multi-material & multicolor 3D printer.</p> <p>Element expands on what we've learned from Palette and integrates it into a seamless workflow - from an idea to reality. A Palette X within Element makes it possible to print up to 8 materials and colors in a single part. By using CANVAS slicer software, Mosaic Material Pods and Materials, Element automates the entire process.</p> <p>Features and benefits of Element include:</p> <ul style="list-style-type: none"> • 350°C hot-end, 120°C heated bed • Modular toolhead, kinematically coupled • Integrated purge container with densifier • LED print-status indicator incorporated into design • Cloud connected to CANVAS slicer software • 1-year Manufacturer's Warranty • HIWIN Linear Rails • CoreXY Kinematics Systems • Trinamic Stepper Drivers 	<h2>COMPATIBLE SELECTION OF MOSAIC MATERIAL</h2> <p>Mosaic Materials used in tandem with Mosaic's Material Pods allows Element to achieve automated filament management while ensuring long-lasting reusability. Element will be capable of printing a selection of Mosaic Materials, including:</p> <ul style="list-style-type: none"> • Nylon & CF Nylon • PP • ABS • PLA • PETG • TPU • PVA • HIPS <p>Element is open to third party materials as well, but the user will have to manually input the filament profile.</p>
<h2>MULTI-MATERIAL MANAGEMENT & AUTOMATED WORKFLOW EXPLAINED</h2> <p>As mentioned above, using Mosaic Materials and Material Pods with Element allows you to automate your workflow.</p> <p>Each Material Pod contains a motor which feeds filament from the Pod to Palette X, and onwards to the print head. Unlike our standalone Palette device, Palette X does not splice the materials. The reason for this is that when using multiple combinations of different material types, splicing becomes less reliable. Element, along with Palette X, has full control over material management and therefore does not require splicing. This promotes higher quality prints while also resulting in less material waste.</p> <p>Element is also cloud connected to CANVAS. This means creating, editing, organizing and slicing your multi-material models and sending them to the printer is extremely easy. What could once take up to an hour or more becomes a process reduced to a matter of minutes.</p>	

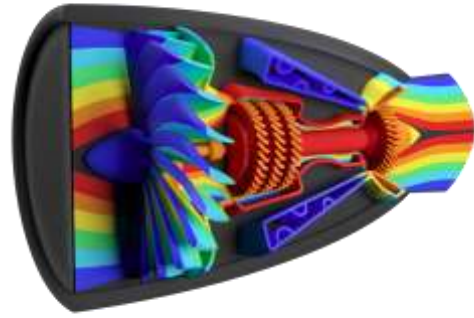
Element Features Spotlight

Build Volume



With a build volume of 14" ³, you're able to maximize productivity and print several pieces at once, in different colors and materials.

Multicolor / Multi-Material



Printing in multi-color/material with Element is just as easy as printing in one. The option to have 8 materials on deck at any time means the possibilities are endless.

Intuitive UI



Element's cloud connectivity to CANVAS optimizes the user experience and allows full control over your projects conveniently from the printer itself.
vered by the customer.

Modular Extruder



A modular design makes it easier than ever to remove your print head for repairs or a swap, and reinstalling it is just as simple!