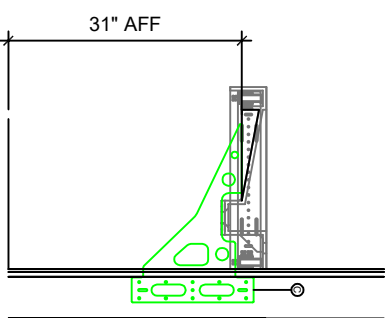
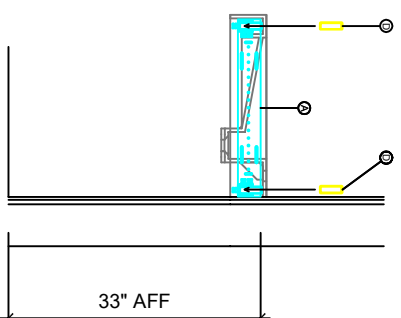
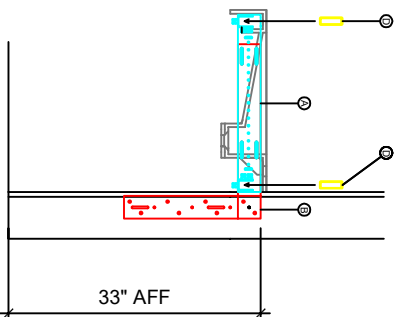
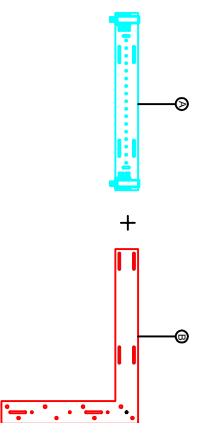


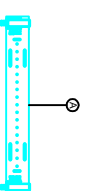
INSTALLATION INSTRUCTIONS FLOATING AND WALL TO WALL MOUNT



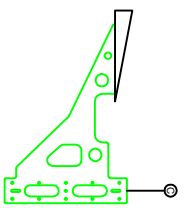
SIDE WALL
BRACKET (A)
MOUNTS TO
IN WALL
BRACKET (B)



SIDE WALL
BRACKET (A)
MOUNTS TO SIDE
WALL STUD OR
FINISH TILE W/
STEEL BACKER
PLATE PROVIDED
BY OTHERS



CENTER
SUPPORT
BRACKET (E) FOR
SINKS LARGER
THAN 96" IN
LENGTH



1" X 3" STEEL TUBE X 2 PER SINK



FLOATING MOUNT

WALL TO WALL MOUNT