

Bent and Twisted Fabrication

NESS CITY, KS - (785) 798-2184

Installation Instructions

POLARIS GENERAL

L-BOLTS

Required Tools

- $\frac{3}{4}$ " socket and $\frac{3}{4}$ " wrench
- Ratchet or impact driver
- T40 Torx socket
- 10mm socket
- Flathead screwdriver
- Needle nose pliers or magnet
- Trim retainer removal tool
- Rubber mallet
- Drill with $\frac{1}{4}$ " & $\frac{1}{2}$ " drill bit (make sure they are high quality bits)
- Floor jack and jack stands or another person to help hold the rails

- 1** If you are using the L-Bolts, start by removing the 4 T40 Torx bolts from the lower plastic side trim.



- 2** Slip the L-Bolt into the factory hole, where the Torx screw was located. (The 2023 and newer models will use the (2) 7/16" bolts in the bottom 2 rear most holes.)

- 3** Next, take the supplied self-tapping screw and run it in the hole and into the L-Bolt. (Do not tighten yet.)



- 4** After all L-Bolts are installed, place your slider in place and install washers & nuts. Snug them up first to keep the bolt straight.



- 5** Then, tighten the self tapping screw and tighten down the 1/2" nuts the rest of the way.

Bent and Twisted Fabrication

NESS CITY, KS - (785) 798-2184

Installation Instructions

POLARIS GENERAL

BOLT SET

Required Tools

- ¾" socket and ¾" wrench
- Ratchet or impact driver
- T40 Torx socket
- 10mm socket
- Flathead screwdriver
- Needle nose pliers or magnet
- Trim retainer removal tool
- Rubber mallet
- Drill with ¼" & ½" drill bit (make sure they are high quality bits)
- Floor jack and jack stands or another person to help hold the rails

- 1** If you are using the Bolt Set, which bolts through the frame, the T40 Torx bolts can be left in place.
-

- 2** Jack your machine up and remove all 10mm head skid plate bolts.
-

- 3** Begin drilling out the 4 factory holes on each side. Start by using the 1/4" bit to make a pilot hole, then drill a 1/2" hole to fit the bolts provided to you.
-

- 4** Place your tree-kickers up to the body and install the bolts with a washer on each side, through the frame holes and loosely install the nylock nuts. (The lower rear bolts are the hardest because of a factory gusset. Here you will need to use needle nose pliers or a magnet to hold the nut up in place to start the bolt. Each machine is different and some grinding on the gusset may be necessary.)
-



Bent and Twisted Fabrication

NESS CITY, KS - (785) 798-2184

Installation Instructions

POLARIS GENERAL **BOLT SET**

(continued)

5

Next step is to use the 3/4" socket and wrench on your impact (or ratchet) and tighten all four 1/2" bolts very snug. Remember they are nylock nuts so they don't need to be super tight.



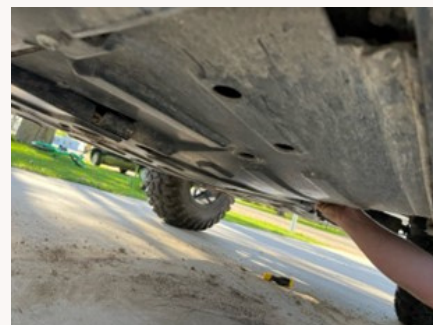
6

Begin reinstalling the skid plate loosely. (You may need to clean the dirt out of the plastic channels behind the plastic trim.)



7

Take a flat head screwdriver and pry the rear skid plate square hole over the frame tab. Make sure you slide the front parts of the skid plate up over the frame as there should be 2 on each wheel side.



8

Once you have the 4 tabs over the frame up front and 2 square holes in rear in place, you can tighten the skid plate bolts back down. Make sure the washers line up with the holes on the skid plate when tightening them back down. If they don't, you may need the rubber mallet to persuade the skid plate to move a little bit to line them up.



THANK YOU FOR YOUR BUSINESS!
