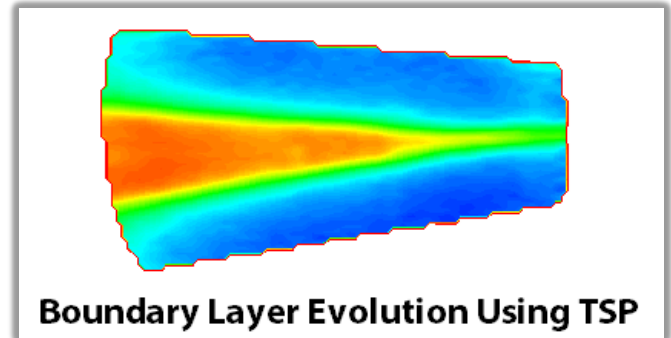


CCTR Temperature Sensitive Paint

(Product ID: CCTR-XXX)

CCTR is a temperature sensitive paint in a clear coat binder that is oxygen impermeable. It is easy to apply with a spray gun. Peak absorption wavelength for CCTR is near 470-nm and is typically excited with ISSI's LM2X-DM-460 standard LEDs. With a peak emission around 620-nm, the excitation light is separated from the TSP emission with an optical filter. CCTR offers slightly better temperature sensitivity than UniTemp TSP.

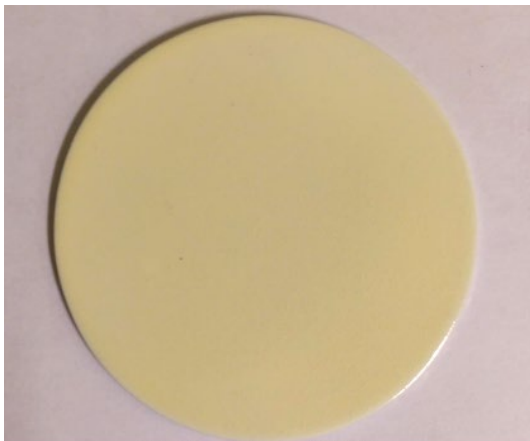


One of the first uses of TSP was for the detection of boundary layer transition. The heat flux to the surface, and therefore the surface temperature, is a function of the local heat transfer coefficient. As the heat transfer coefficient is substantially larger for a turbulent boundary layer as compared to a laminar boundary layer, a sharp increment in the surface temperature is indicative of transition.

SPECIFICATIONS

Pressure sensitivity	0.0% per kPa
Temperature sensitivity	1.8% per °C
Temperature range	-10°C to 60°C
Response time	750-ms
Excitation	400-nm to 550-nm (peak 470-nm)
Emission	600-nm to 750-nm (peak 620-nm)
Photo-degradation rate	1% per hour
Shelf life	12-months
Filter	570-nm
ECCN	EAR99

Available quantities: 200-, 400-, 750-ml



CCTR TSP

