

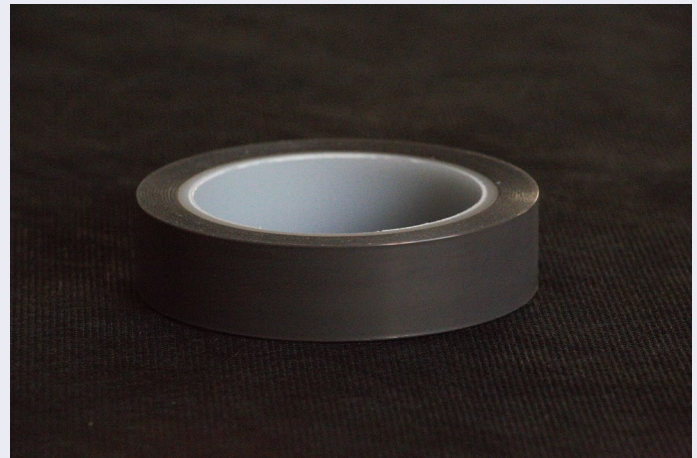
DeWAL® PTFE Film for Compression Moulding

Features:

- Temperature range up to 260°C (+500°F)
- Good insulation
- Low friction coefficient
- UL-approved component
 - File no. E179854 Flame Retardant/Cold Resistant (204-2HD, 204-3HD, 204-5, 204-5HD)

Benefits:

- Tensilized PTFE enhances strength for extended use during manufacturing
- Excellent cycling performance
- Chemical inertness
- Clean adhesive surface
- No air bubbles within tape component



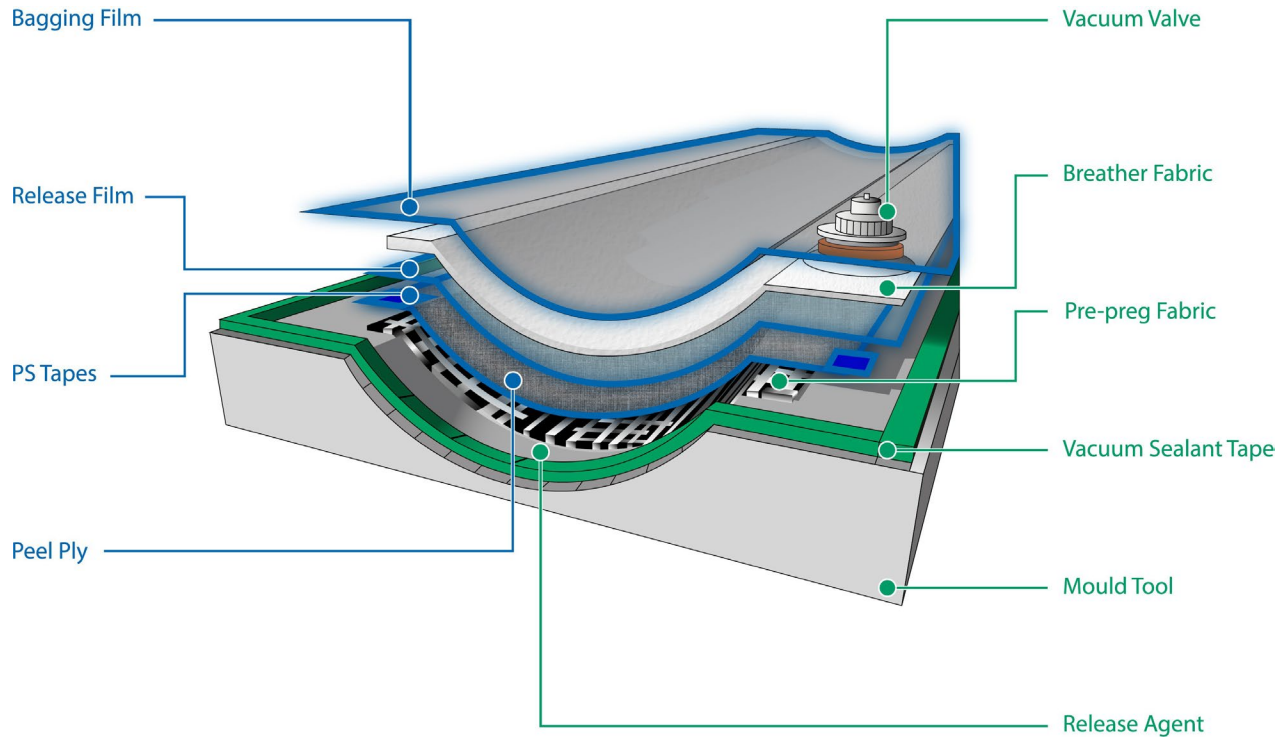
Rogers DeWAL® DW204 series is a skived, tensilized PTFE film coated with silicone adhesive.

The most popular films, DW204-2HD, DW204-3HD and DW204-5HD are primarily used for release surfaces for composite manufacturing.

Tensilizing the PTFE leads to increased durability which enhances the composite manufacturing process.

Composite molding applications include manufacturing for turbine blades, boat hulls, etc.

Rogers has built a strong network of distributors for DeWAL Pressure-Sensitive (PS) products who are dedicated to supporting all your projects quickly.



Available Products

PRODUCT	SUBSTRATE	ADHESIVE	BACKING THICKNESS, Minimum	ADHESIVE THICKNESS, Minimum	ADHESION, Typical [ASTM-D 1000]	TENSILE STRENGTH, Typical [ASTM-D 3759]	ELONGATION, Typical [ASTM-D 3759]
			<i>mm (in)</i>	<i>mm (in)</i>	<i>g/cm (oz./in)</i>	<i>Mpa (psi)</i>	<i>%</i>
DW 204-5	PTFE Film	Silicone	0.114 (0.0045)	0.030 (0.0012)	480 (43)	46 (6,737)	438
DW 204-2HD	PTFE Film	Silicone	0.043 (0.0017)	0.030 (0.0012)	390 (35)	121 (17,535)	147
DW 204-3HD	PTFE Film	Silicone	0.069 (0.0027)	0.030 (0.0012)	424 (38)	-	-
DW 204-5HD	PTFE Film	Silicone	0.114 (0.0045)	0.030 (0.0012)	480 (43)	101 (14,627)	215
DW 215-5	PTFE Film	Acrylic	0.114 (0.0045)	0.030 (0.0012)	524 (47)	46 (6,737)	438
DW 215-2HD	PTFE Film	Acrylic	0.043 (0.0017)	0.030 (0.0012)	402 (36)	-	-
DW 662	PTFE Film	Silicone	0.056 (0.002)	0.030 (0.0012)	335 (30)	107 (15,486)	204
DW 664	PTFE Film	Silicone	0.089 (0.0035)	0.030 (0.0012)	446 (40)	71 (10,319)	211