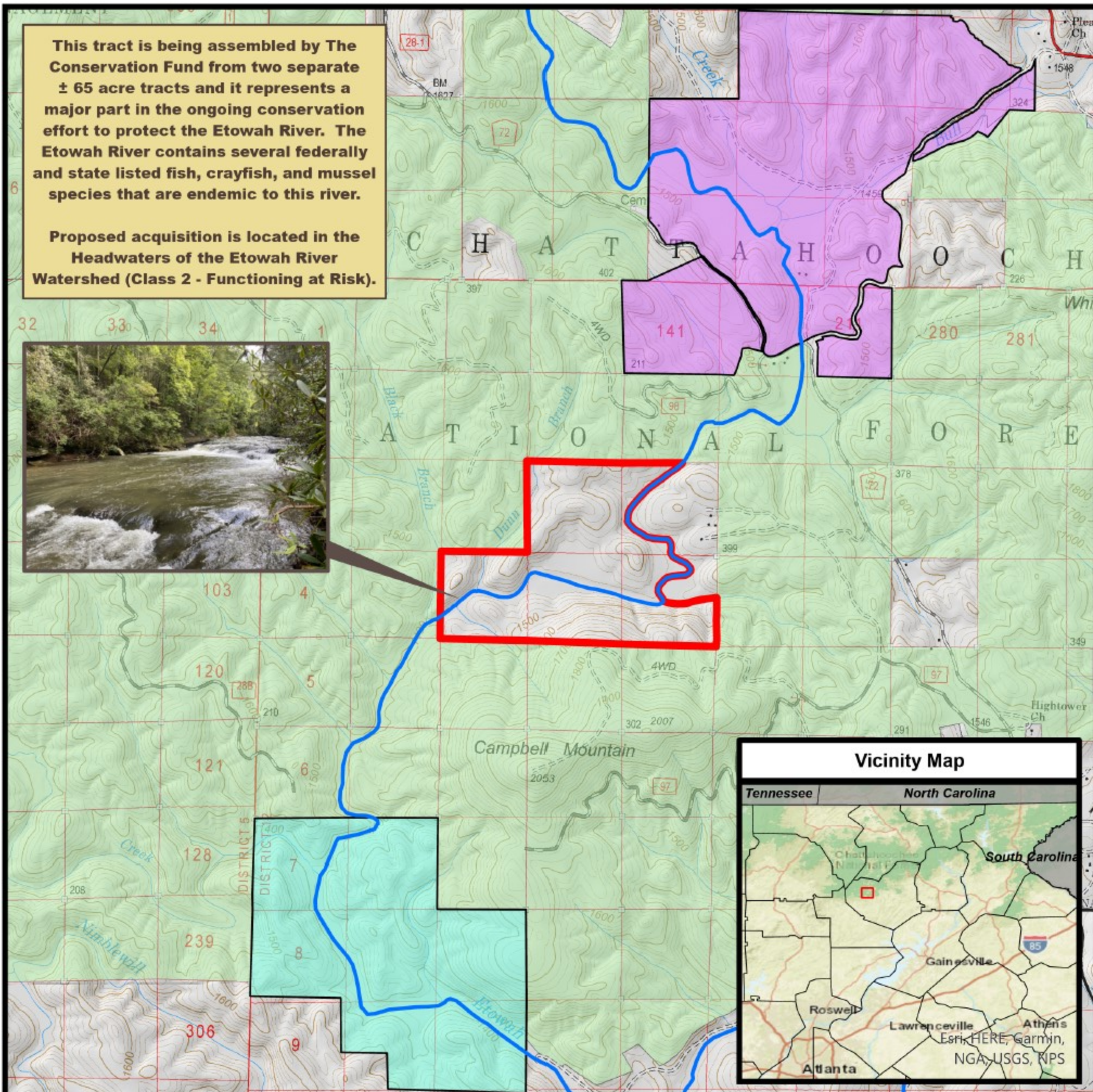
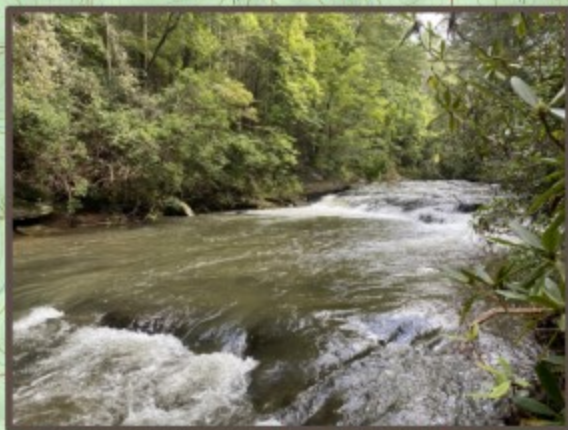


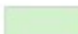




Proposed acquisition is located in the Headwaters of the Etowah River Watershed (Class 2 - Functioning at Risk).



Background data is PBS_GeoTIFF, supplemented with Lands Status Records System Forest Service ownership and boundary data.

This map generally depicts the location of National Forest System Lands. The USDA Forest Service makes no warranty, expressed or implied regarding the data displayed on this map, and reserves the right to correct, update, modify, or replace this information without notification.

Center: 84°5'25"W 34°35'6"N

-  USDA FOREST SERVICE
-  FY22/23 LWCF Nomination
-  FY21 LWCF - TCF \pm 272 Acre Tract C-2375 (PENDING)
-  GDOT "Garwood" \pm 470 Acre Donation (PENDING)
-  Etowah River

"Dunn & Ricketts"
The Conservation Fund
Tract C-2378 ± 165 Acres



U.S. Forest Service - Southern Region
Chattahoochee-Oconee National Forests
Blue Ridge Ranger District
U.S. Congressional District - 09



Copies of this map are available for public inspection in the Chattahoochee-Oconee NF Supervisor's Office Gainesville, Georgia.

Map Printed Date:
September 7, 2021



Vicinity Map



Center: 83°19'40"W 34°48'23"N

Sheet 1 of 1

References

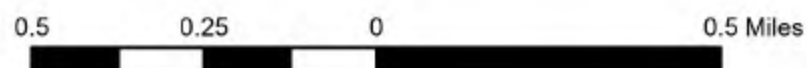
Background data is PBS_GeoTIFF, supplemented with Lands Status Records System Forest Service ownership and boundary data.

Disclaimer

This map generally depicts the location of National Forest System Lands. The USDA Forest Service makes no warranty, expressed or implied regarding the data displayed on this map, and reserves the right to correct, update, modify, or replace this information without notification.

- USDA FOREST SERVICE
- FY22/23 LWCF Nomination
- National Wild & Scenic River

Parcel Number(s) 065 001 & 065 002



Map Printed Date:
September 1, 2021

FY 2022 & 2023 LWCF

**"Mays on Stekoa Creek"
The Conservation Fund
Tracts C-2377 & C2377a ± 250 Acres**

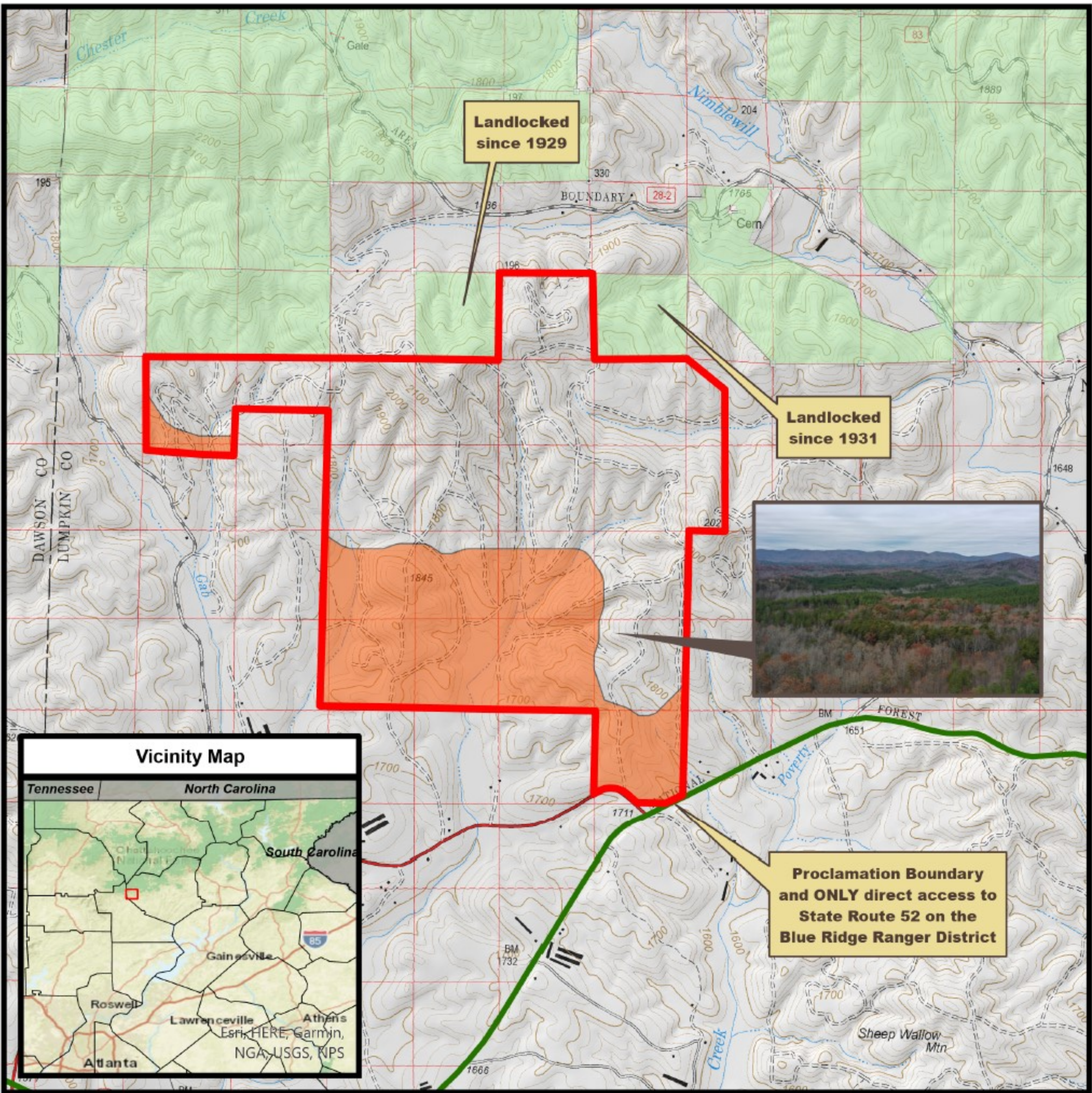
Rabun County, Georgia



U.S. Forest Service - Southern Region
Chattahoochee-Oconee National Forests
Chattooga River Ranger District
U.S. Congressional District - 09



Copies of this map are available for public inspection in the Chattahoochee-Oconee NF Supervisor's Office Gainesville, Georgia.



**Landlocked
since 1929**

**Landlocked
since 1931**



**Proclamation Boundary
and ONLY direct access to
State Route 52 on the
Blue Ridge Ranger District**



References

Background data is PBS_GeoTIFF, supplemented with Lands Status Records System Forest Service ownership and boundary data.

Disclaimer

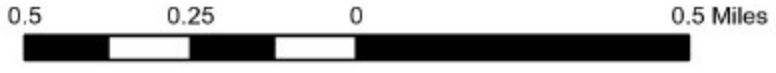
This map generally depicts the location of National Forest System Lands. The USDA Forest Service makes no warranty, expressed or implied regarding the data displayed on this map, and reserves the right to correct, update, modify, or replace this information without notification.

Parcel Number(s) 003 042 & 008 031

Center: 84°9'58"W 34°33'23"N

Sheet 1 of 1

- USDA FOREST SERVICE
- FY23 LWCF Nomination
- Potential addition to the "Foothills" Landscape Area Restoration Project



Map Printed Date:
September 1, 2021

FY 2023 LWCF

"Nimblewill Tract"
The Conservation Fund
± 783 Acres

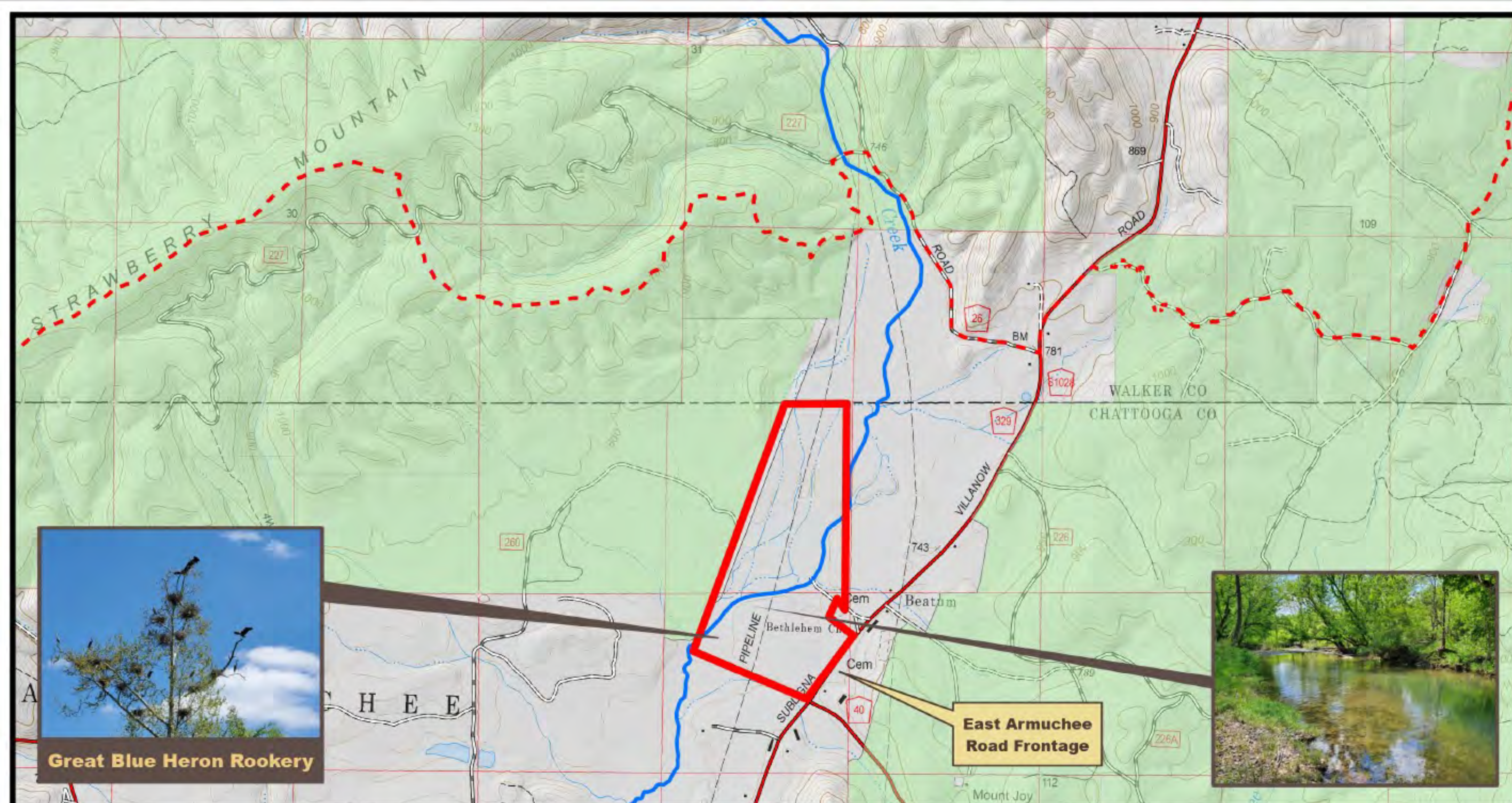
Lumpkin County, Georgia



U.S. Forest Service - Southern Region
Chattahoochee-Oconee National Forests
Blue Ridge Ranger District
U.S. Congressional District - 09



Copies of this map are available for public inspection in the Chattahoochee-Oconee NF Supervisor's Office Gainesville, Georgia.



Great Blue Heron Rookery



East Armuchee Road Frontage

Vicinity Map



Center: 85°9'19"W 34°35'13"N

Sheet 1 of 1

References

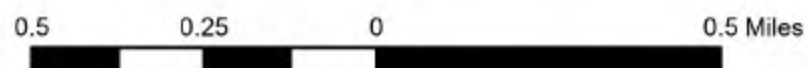
Background data is PBS_GeoTIFF, supplemented with Lands Status Records System Forest Service ownership and boundary data.

Disclaimer

This map generally depicts the location of National Forest System Lands. The USDA Forest Service makes no warranty, expressed or implied regarding the data displayed on this map, and reserves the right to correct, update, modify, or replace this information without notification.

- USDA FOREST SERVICE
- FY23 LWCF Nomination
- Pinhoti Trail
- West Armuchee Creek

Parcel Number(s) 0008300000062



Map Printed Date:
September 1, 2021

FY 2023 LWCF

**"Bosshardt on West Armuchee Creek"
The Conservation Fund
Tract A-3224 ± 150 Acres**

Chattooga County, Georgia



U.S. Forest Service - Southern Region
Chattahoochee-Oconee National Forests
Conasauga Ranger District
U.S. Congressional District - 14



Copies of this map are available for public inspection in the Chattahoochee-Oconee NF Supervisor's Office Gainesville, Georgia.