

Center: 85°3'35"W 34°34'17"N

Sheet 1 of 1

References
Background data is PBS_GeoTIFF, supplemented with Lands Status Records System Forest Service ownership and boundary data.

Disclaimer
This map generally depicts the location of National Forest System Lands. The USDA Forest Service makes no warranty, expressed or implied regarding the data displayed on this map, and reserves the right to correct, update, modify, or replace this information without notification.

Legend

- USDA FOREST SERVICE
- Disposed
- Wildlife Management Area
- State Owned Lands
- FY24 LWCF Nomination
- Girl Scout Council

Tax Parcel: 002 013



0.5 0.25 0 0.5 Miles

Map Printed Date: September 8, 2022

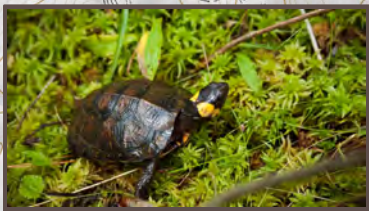
FY24 LWCF

"Blum Tract"
The Nature Conservancy
Tract A-3226 ± 263 Acres

Gordon County, Georgia

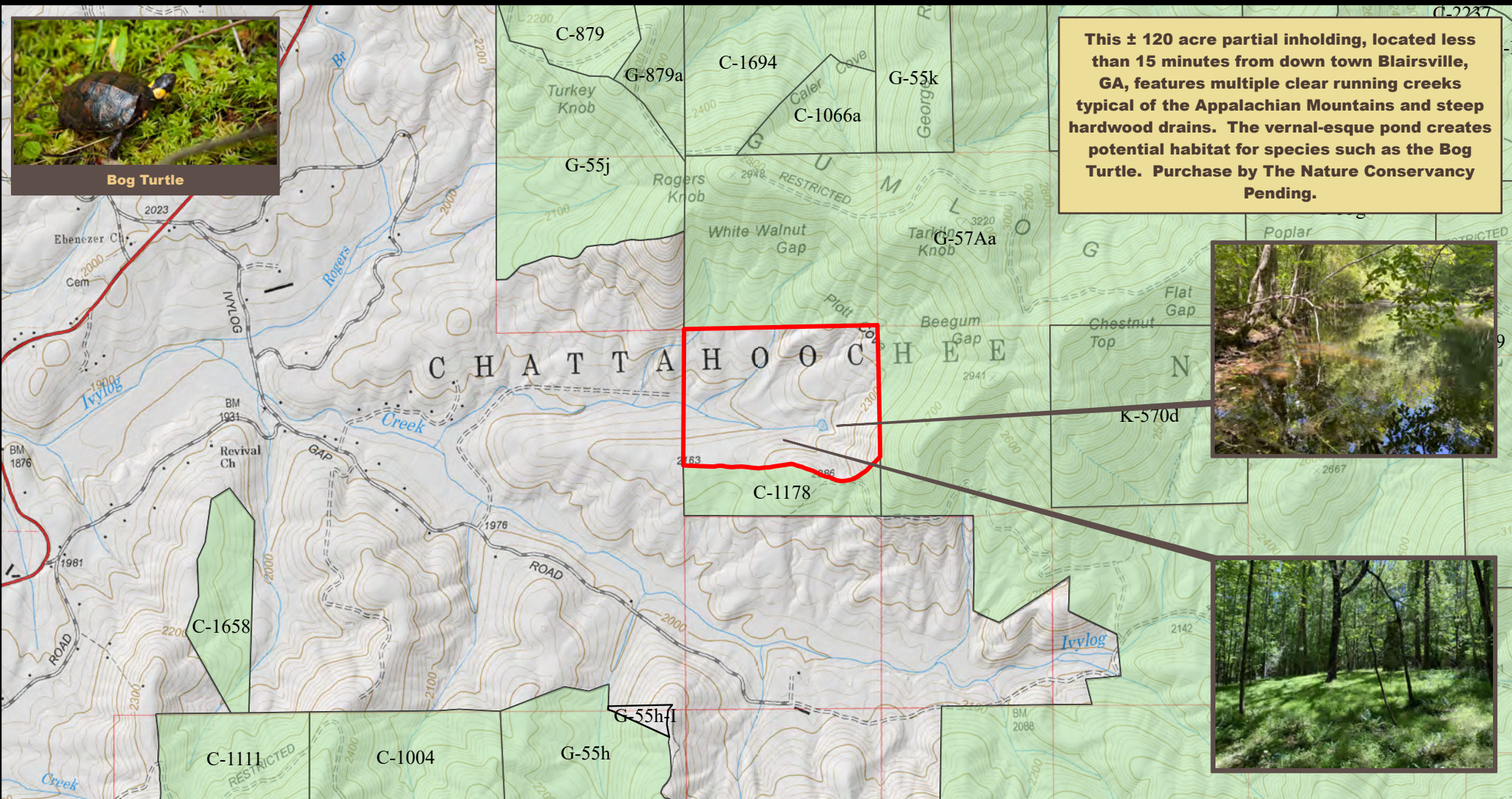
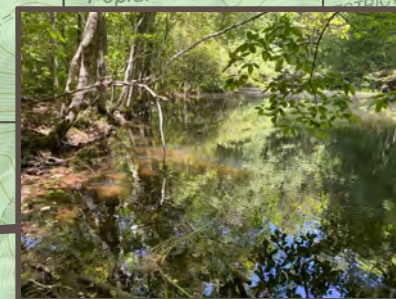
	U.S. Forest Service - Southern Region Chattahoochee-Oconee National Forest Conasauga Ranger District U.S. Congressional District - 14	
---	--	---

Copies of this map are available for public inspection in the Chattahoochee-Oconee NF Supervisor's Office Gainesville, Georgia.

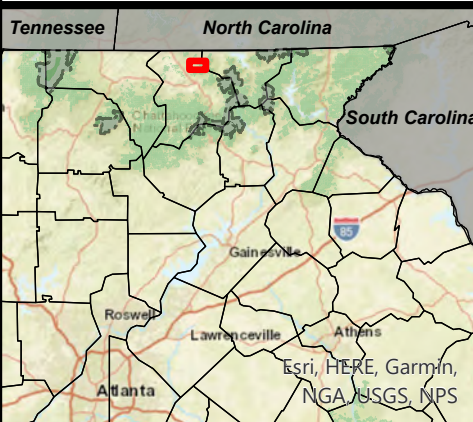


Bog Turtle

This ± 120 acre partial inholding, located less than 15 minutes from down town Blairsville, GA, features multiple clear running creeks typical of the Appalachian Mountains and steep hardwood drains. The vernal-esque pond creates potential habitat for species such as the Bog Turtle. Purchase by The Nature Conservancy Pending.



Vicinity Map



Center: 83°57'26"W 34°56'7"N

Sheet 1 of 1

References

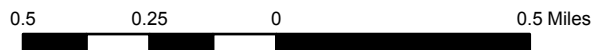
Background data is PBS_GeoTIFF, supplemented with Lands Status Records System Forest Service ownership and boundary data.

Disclaimer

This map generally depicts the location of National Forest System Lands. The USDA Forest Service makes no warranty, expressed or implied regarding the data displayed on this map, and reserves the right to correct, update, modify, or replace this information without notification.

- USDA FOREST SERVICE
- Disposed
- FY24 LWCF Nomination

Tax Parcel: 083 007



Map Printed Date:
September 8, 2022

FY24 LWCF

"Colwell Tract"
The Nature Conservancy
Tract C-2397 ± 119.32 Acres

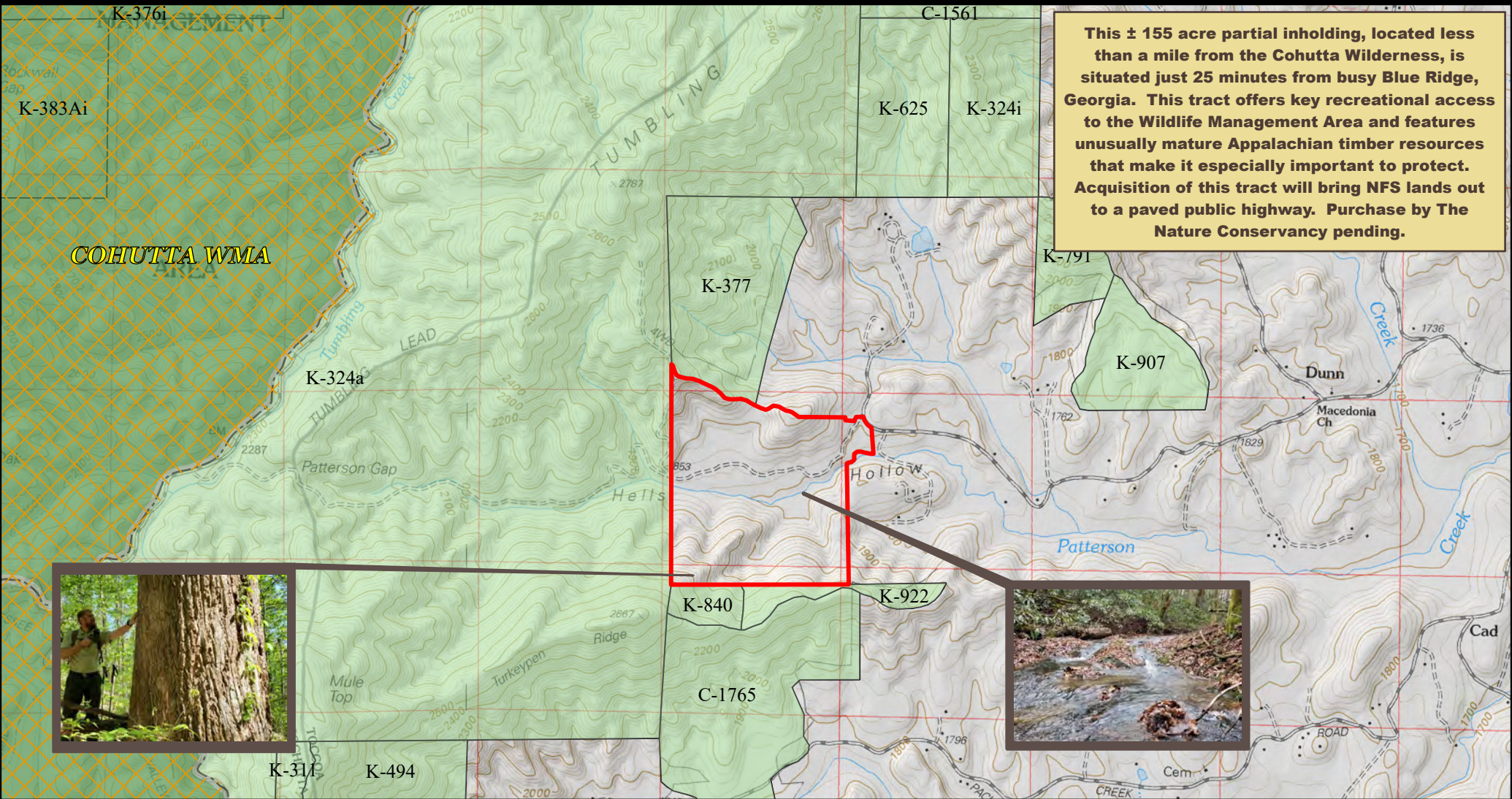
Union County, Georgia



U.S. Forest Service - Southern Region
Chattahoochee-Oconee National Forest
Blue Ridge Ranger District
U.S. Congressional District - 9



Copies of this map are available for public inspection in the Chattahoochee-Oconee NF Supervisor's Office Gainesville, Georgia.



This ± 155 acre partial inholding, located less than a mile from the Cohutta Wilderness, is situated just 25 minutes from busy Blue Ridge, Georgia. This tract offers key recreational access to the Wildlife Management Area and features unusually mature Appalachian timber resources that make it especially important to protect. Acquisition of this tract will bring NFS lands out to a paved public highway. Purchase by The Nature Conservancy pending.



Center: 84°29'11"W 34°56'37"N

Sheet 1 of 1

References

Background data is PBS_GeoTIFF, supplemented with Lands Status Records System Forest Service ownership and boundary data.

Disclaimer

This map generally depicts the location of National Forest System Lands. The USDA Forest Service makes no warranty, expressed or implied regarding the data displayed on this map, and reserves the right to correct, update, modify, or replace this information without notification.

- USDA FOREST SERVICE
- Wilderness Area
- Wildlife Management Area
- FY24 LWCF Nomination

Tax Parcel: 0010 B 001



Map Printed Date: September 8, 2022

FY24 LWCF

"Hells Hollow"
The Nature Conservancy
Tract C-2386 ± 154.70 Acres

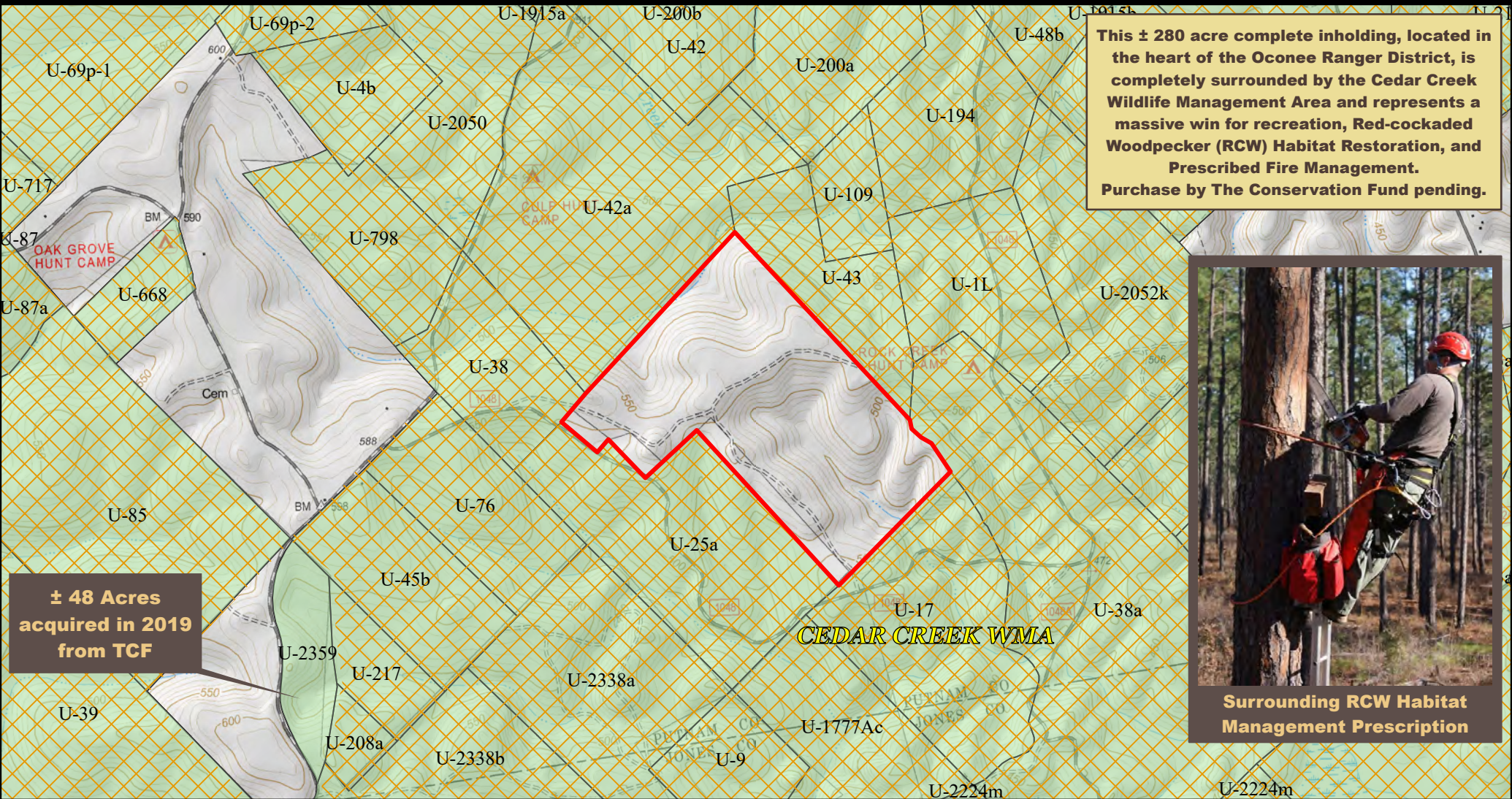
Fannin County, Georgia



U.S. Forest Service - Southern Region
Chattahoochee-Oconee National Forest
Conasauga Ranger District
U.S. Congressional District - 9



Copies of this map are available for public inspection in the Chattahoochee-Oconee NF Supervisor's Office Gainesville, Georgia.



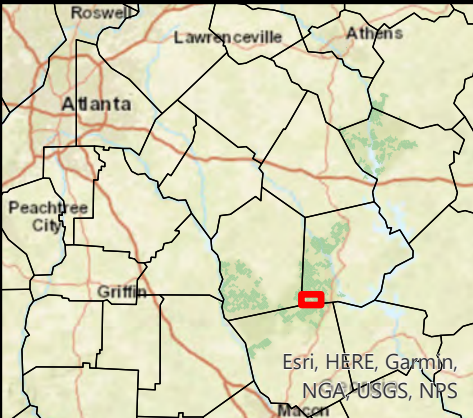
This ± 280 acre complete inholding, located in the heart of the Oconee Ranger District, is completely surrounded by the Cedar Creek Wildlife Management Area and represents a massive win for recreation, Red-cockaded Woodpecker (RCW) Habitat Restoration, and Prescribed Fire Management. Purchase by The Conservation Fund pending.

± 48 Acres
acquired in 2019
from TCF



Surrounding RCW Habitat
Management Prescription

Vicinity Map



Center: 83°30'17"W 33°11'25"N

Sheet 1 of 1

References

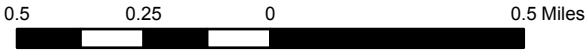
Background data is PBS_GeoTIFF, supplemented with Lands Status Records System Forest Service ownership and boundary data.

Disclaimer

This map generally depicts the location of National Forest System Lands. The USDA Forest Service makes no warranty, expressed or implied regarding the data displayed on this map, and reserves the right to correct, update, modify, or replace this information without notification.

- USDA FOREST SERVICE
- Wildlife Management Area
- FY24 LWCF Nomination

Tax Parcel: 026 001



Map Printed Date:
September 8, 2022

FY24 LWCF

"Pelot Plantation near Devil's Half-Acre"
The Conservation Fund
Tract U-2398 ± 280 Acres

Putnam County, Georgia



U.S. Forest Service - Southern Region
Chattahoochee-Oconee National Forest
Oconee Ranger District
U.S. Congressional District - 10



Copies of this map are available for public inspection in the Chattahoochee-Oconee NF Supervisor's Office Gainesville, Georgia.