



These are artist renditions for sales purposes only.
 Refer to working drawings for actual dimensions.
 © 2012 Nationwide Homes 10/4/12



HICKORY II

Shown with optional exterior features

First Floor: 1,320 sq. ft. finished
 Dimensions: 41'5"W x 40'0"D

HICKORY II

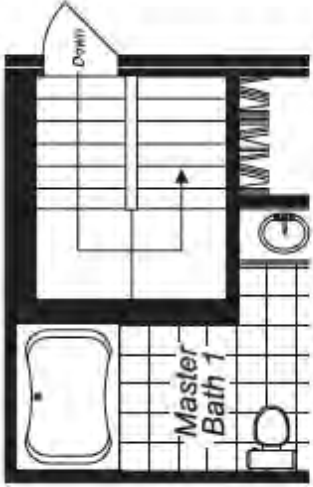
QR Code
 Scan using your
 barcode reader app on
 your smart phone to
 see a photos of
 this model



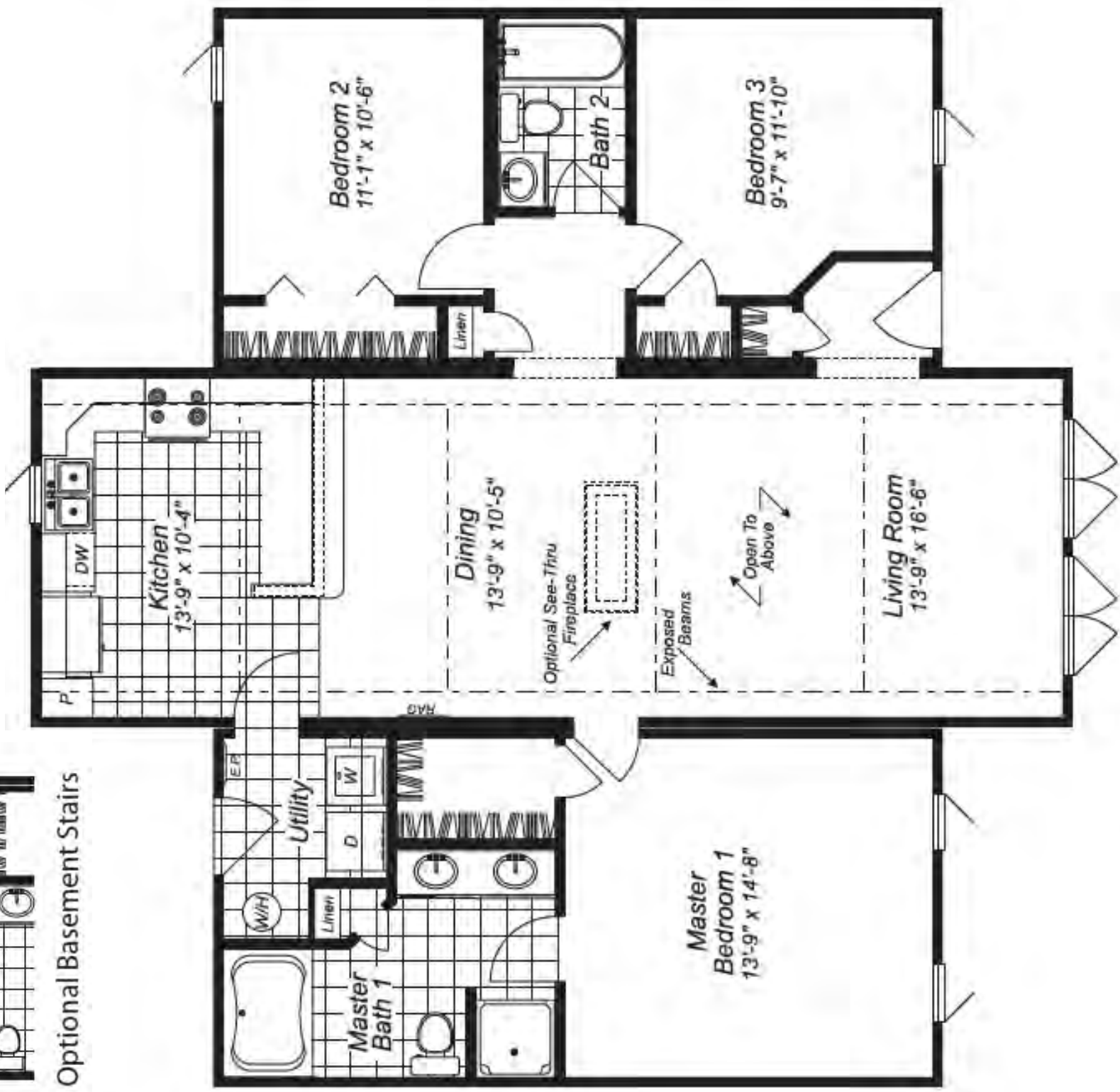
NATIONWIDE
Homes
 HiPERFORMANCE BUILDERS

nationwide-homes.com • facebook.com/nationwidehome





Optional Basement Stairs



HICKORY II

These are artist renditions for sales purposes only.
Refer to working drawings for actual dimensions.
© 2012 Nationwide Homes 104/12