

PRESENTATION

By Architect Faran Lodhi

FLAAA
**Alternative
Affordable
Architecture**

What FLAAA is ?

Future Living Alternative Affordable Architecture (FLAAA), is a concept of container housing aimed at fostering a sustainable and equitable green future for all. By integrating alternative construction materials, incorporating both passive and active solar technology, establishing green roofs and walls, and promoting communal living, FLAAA aims to create environmentally friendly, affordable, and universally accessible container homes and structures.

The FLAAA model also embraces the ethos of community living by designing homes and buildings that foster a sense of community through a shared resources model.

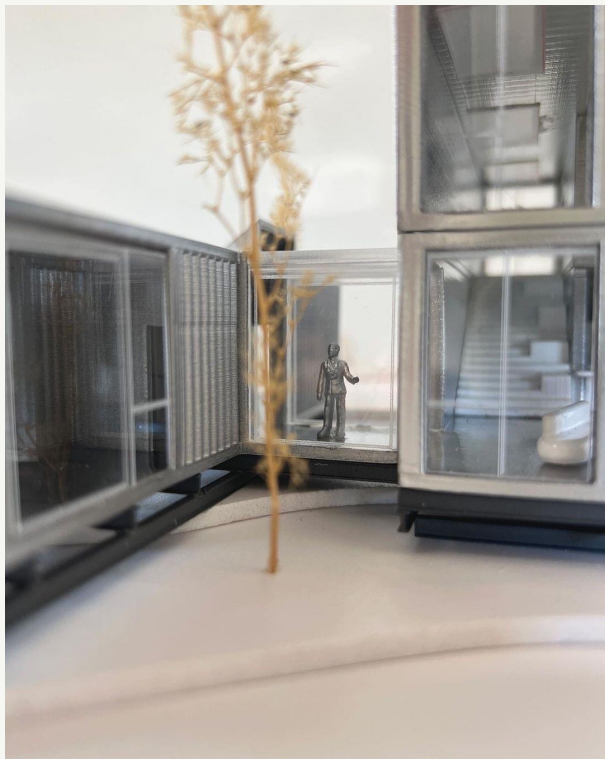
FLAAA

**Alternative
Affordable
Architecture**



FLAAA

**Alternative
Affordable
Architecture**



FLAAA is about more than just providing homes; its purpose is providing alternative & affordable lifestyle solutions to facilitate **FLAAA** living.

This includes everything from tiny homes and converted shipping containers designed to give you a space to unwind, to the best and most sustainable ancillary items for your **FLAAA** lifestyle.

What Does FLAAA Offer?

Our objective is to make the FLAAA lifestyle accessible to all, focusing on three distinct service offerings:

LIFESTYLE

Own a personal **FLAAA** home to utilise according to your desires. Use it as a refuge from daily routine, or embrace the true **FLAAA** lifestyle by making it your permanent residence. Prioritising your wellbeing, **FLAAA** living ensures it comes first.

STAY

Enjoy a genuinely rejuvenating respite in one of our serene **FLAAA** homes designed for short-term stays. Crafted with tranquility and wellbeing in mind, these dwellings reconnect you with nature and encourage mindful relaxation.

INVEST

With the global real estate market booming, people are looking for an uncomplicated alternative to escape the inflated housing market. Investing in a **FLAAA** home allows you to be part of the burgeoning sustainable housing movement.

FLAAA

**Alternative
Affordable
Architecture**

Why Switch to FLAAA from Conventional Housing ?

FLAAA
Alternative
Affordable
Architecture



At FLAAA, we see future living alternative affordable architecture as more than just affordability and sustainability. It's about re-establishing a connection with nature and leading a simpler, more enriching life. Our container homes strike the perfect balance between comfort and simplicity, enabling off-grid living without compromising the quality of life.



FLAAA

**Alternative
Affordable
Architecture**

FLAAA container homes redefine living by combining sustainability, functionality, and affordability. With a diverse array of options, state-of-the-art amenities, and leading-edge smart home technology, we challenge the limits of off-grid living.

FLAAA

**Alternative
Affordable
Architecture**

How it's Work ?

**The process
begins with a
design package
and concludes
with a fully
constructed
home:**



1

Inception & Feasibility



FLAAA

**Alternative
Affordable
Architecture**

Build a stylish and sustainable homes design with FLAAA Plans. Our biophilic and eco-friendly design offers stunning views, ample natural light, & expertly crafted interior spaces, perfect for hosting guests or a comfortable getaway.

FLAAA

**Alternative
Affordable
Architecture**

2

Buy a Design Package



Best for people that want to have a clear idea of the FLAAA Homes as it includes our tiny house with all the floor plan drawings, sections & elevations.

FLAAA

**Alternative
Affordable
Architecture**

3 Finalise your Location where to Build



Use your Plan Package to finalise the location where you want to build your next container home. By having all the specifications of the FLAAA Homes you will be able to find a more suitable land.

4

Check Planning Approvals & Building Regulations



We will ensure your build is compliant with all Planning & Building Regulations. In the UK Shipping Containers should be classed as a temporary structure and should be exempt from any planning permission requirements. The structures, along with caravans and mobile homes, are portable and are not designed to sit permanently, hence they should be exempt from planning permission requirements.

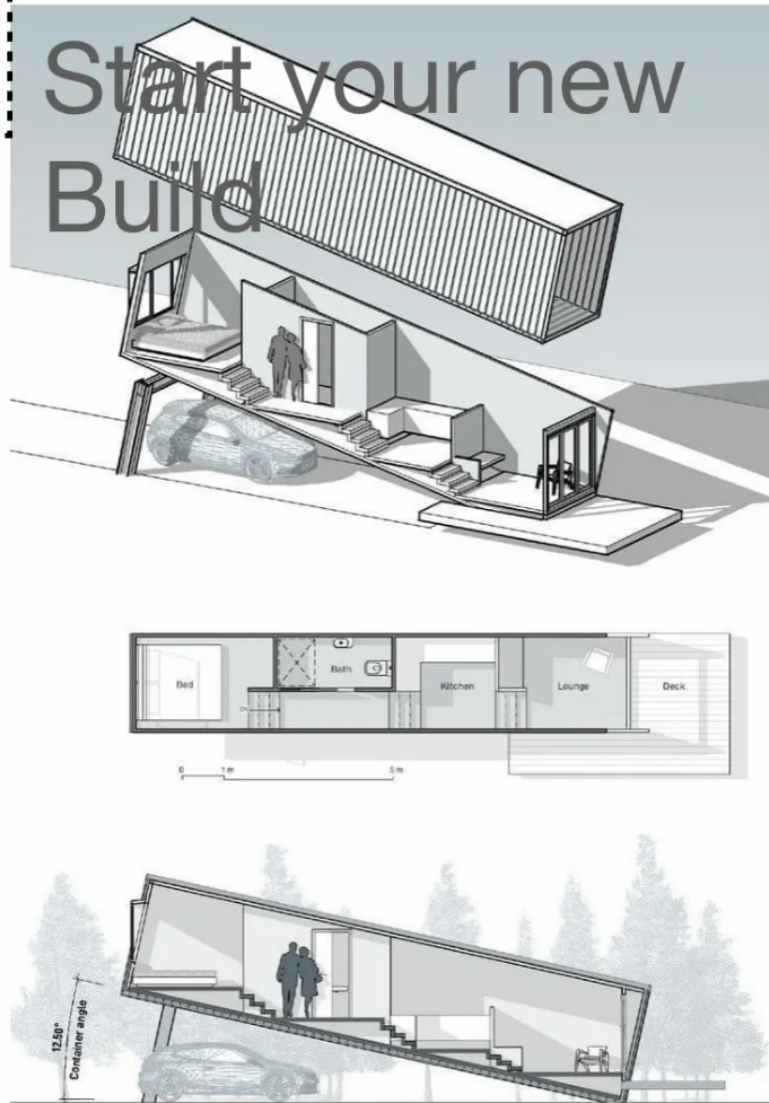
FLAAA

**Alternative
Affordable
Architecture**

However, there may be special conditions in your area, such as areas of natural beauty. We would encourage you to check with your local planning office in advance of ordering any containers. Here you can save up to 50% of your time to build & up to 40% saving in your new build FLAAA homes.

5

Start your new
Build



FLAAA

**Alternative
Affordable
Architecture**

Once you have all the permits in place you will be ready to start building your FLAAA Homes! Reach out to us throughout every step in your journey because we want to be there with you.

Are You Ready? LET'S START BUILDING!

FLAAA

**Alternative
Affordable
Architecture**



Studio 66,
77 Beak St, SoHo
London UK W1F 9DB

119 Norrnas Edsele
Sweden 880 41

WhatsApp: + 44 786 3319 667
E: hello@flaaa.uk
Web: flaaa.uk