



## **2024 JFCA Point Series Guidelines and Exhibitor Handbook**

**The following guidelines will be followed by all shows within the 2024 JFCA Point Series. These guidelines are used to alleviate any concerns that might arise, while also providing consistency for our exhibitors.**

## 2024 General Guidelines

1. **ALL Shows are run independently and are not run by the JFCA Committee.** Each show has a show committee which oversees the “running” of the show and that show committee is in charge of their show in its entirety. **Please direct questions/comments about a certain show to the respective show committee.**
2. **Each show is required to follow the JFCA Show Guidelines set forth in this document, but each show is responsible for explaining show pertinent information including, but not limited to: additional guidelines, class payouts, awards/prizes, show specific rules and guidelines for exhibitors and families.**
3. Order of show will be determined by the respective show committee & posted at/or before check-in.
4. SOME of the shows in the series will run two rings, with 2 separate judges. This is up to the discretion of each show.
5. **Exhibitors MUST exhibit their own entries/cattle. PLEASE BE ADVISED that if someone else is exhibiting your cattle and this was not pre-approved (sickness, multiple calves in a class, injury) the following actions will take place: 1) (during the class) your entry will be disqualified and dismissed from the ring - NO EXCEPTIONS. 2) (after animal is placed) you WILL FORFEIT your class placings/points/payout (if applicable) AND animal will be disqualified - NO EXCEPTIONS.**
6. ANY protest, issue, complaint in reference to an issue at the show must be made while at that show. Once you leave the premise and once the show is complete, you forfeit the right to bring up unresolved issues that you might have. No changes to outcomes can/will be made once the show ends.
7. **Parents, family, breeders, fitters, friends of the exhibitor will NOT be allowed in the ring at any time, unless you are asked to help by the committee.** Each show will be asked to have “helpers” in the ring to assist exhibitors if necessary. If an exhibitor cannot control their animal and it breaks away from them 3 times, the exhibitor will be dismissed from the class. If any of the mentioned above enter the ring to assist, they do so with the understanding that the animal entry will be disqualified from placings/points.
8. **Any negative interaction with the judge during the duration of the show or after the show – made by exhibitors, parents, family, friends, fitters, breeders or anyone associated with an exhibitor - will be deemed inappropriate behavior. Please see the next point.**
9. **Disrespectful, vulgar, inappropriate behavior – including but not limited to language, underage drinking, interaction with adults, judges, show officials, will not be tolerated. Participating in any of these activities will be grounds for IMMEDIATE dismissal. The final decision of the committee will be non-negotiable.**
10. **Exhibitors/Participants in ALL SHOWS (which are part of the JFCA Points Show Series), are required to be members of the JFCA. Membership is available to anyone 8 – 21 years of age.** Membership options include: a \$20 membership which includes a monthly copy of the Florida Cattlemen’s Association Magazine OR a \$10 membership (no magazine included). Either option is accepted and allows our members full access to any JFCA activity that is put on statewide! Easiest way to join is by going to the Florida Cattlemen’s Website – [www.floridacattlemen.org/join](http://www.floridacattlemen.org/join).
11. **Once you enter a division – that is the division that you will show in for the entire year.** For example, if you start in the Simmental Division you MAY NOT decide to hop over to the Crossbred or AOB Division at later shows. Our Division Coordinators will be checking ALL entries for EVERY show to ensure you are in the correct division.
12. If you are showing **REGISTERED Females**, we highly encourage you to show in a registered female division (Simmental, Angus, Brangus, Brahman, AOB). Participation in these divisions ensures that we can maintain these division offerings to our participants.
13. **Brahman Influenced Cattle Classification** - We understand that classification of Brahman Influenced Cattle is very subjective. However, our committee will adhere to the specifications laid forth in our guidelines and we entrust our volunteer committee to make those classifications. We understand that it might differ from other shows/series, however we guarantee that this will be handled fairly by individuals who have tremendous experience with Brahman Influenced Cattle and understand the importance of maintaining integrity in the classification process. **If you have BRAHMAN INFLUENCED CATTLE (Heifers/Steers) they MUST be classified by our committee.** The decision of the committee is FINAL. Discussion with our committee is encouraged, but disrespectful behavior will not be tolerated, please see item 9 above.

## SHOWMANSHIP INFORMATION

- Showmanship will be held at each show.
- Pee wee (optional and up to each show as to whether they will hold a Pee Wee Division) will start showmanship off. Order to be determined by each show and will be posted by the respective show. Pee Wee Shoman are those younger 8 years old (as of July 26, 2024). *Pee Wee Exhibitors (those younger than 8 years old) CANNOT exhibit cattle in the show - Bred & Owned, Heifer, Bull or Steer.*
- Collegiate is optional for each show. Collegiate will not be awarded a Top 5 at the end of the Series and points will NOT be accumulated.
- **Divisions will be determined by age as of July 26, 2024.**
  - **Juniors (8-11)**
  - **Intermediate (12-14)**
  - **Senior (15 – 18 not graduated high school or any student over the age of 18 currently enrolled in high school).**
  - **Collegiate (Any JFCA member that has graduated high school up to age 21)**
- Collegiate showmanship will be held at the Kickoff Show, in conjunction with the Collegiate Showmanship Challenge. Other shows can run a collegiate showmanship at their show, if they so choose, however there will not be a points tabulation for a Top 5 at the end of the year.
- **All exhibitors are required to exhibit an animal that they have entered into the show for showmanship. If you are found to be exhibiting an animal, that is NOT your entry, you will be dismissed from the ring. If this information is found AFTER being placed, you will FORFEIT your placing/points. NO EXCEPTIONS.**
- Each show is independently responsible for showmanship awards and prizes.

## BULL INFORMATION

### Bull Division:

Division Coordinator – Leeann Black

**\*We will only run 1 bull division**

- All Bulls can show up until 24 months or younger, as of July 25, 2024
- If a bull that started the series turns 2 during the show season, they are still eligible to finish the series.
- All bulls will be shown by weight.
- **ALL bulls MUST have a nose ring and lead attached to it, upon entering the holding area or they will be disqualified. NO EXCEPTIONS!**
- Top 5 will be awarded and placed.
- Points will be tabulated for animals and kept accordingly, using their tattoo brand or tag number. The first exhibitor to show an animal will be assigned as the owner for that animal, and if a different exhibitor brings it to a show, then no points will be given.
- **\*There is NOT a Bred & Owned Bull Division\***

**If there are 5 or less head of cattle entered in a division, all cattle will be exhibited in a single class.**

## **STEER INFORMATION**

**\* If there are 5 or less head of cattle entered in a division, all cattle will be exhibited in a single class.**

### **Brahman Influenced Steers:**

Division Coordinator, Classification Committee Chair – Rick Hartman

- Brahman Influenced Steers will have their own division.
- Must exhibit and maintain prominent Brahman breed characteristics (Please see information at the end of this packet for clarification)
- Brahman Influenced cattle will be classified at the July kickoff show by a committee. Any cattle entering the Brahman Influenced divisions at later shows must be classified by a member of the committee.
  - Decision of the Classification Committee is FINAL.
  - A Top 5 will be awarded and placed.
- Points will be tabulated for animals and kept accordingly, using their tattoo brand or tag number. The first exhibitor to show an animal will be assigned as the owner for that animal, and if a different exhibitor brings it to a show, then no points will be given.

### **Commercial Steers:**

Division Coordinator – Nikki Hobby

- Steers will be shown by weight at all shows
- American Influenced Steers will be the only ones classified.
- A top 5 will be awarded and placed.
- Points will be tabulated for animals and kept accordingly, using their tattoo brand or tag number. The first exhibitor to show an animal will be assigned as the owner for that animal, and if a different exhibitor brings it to a show, then no points will be given.

**Remember to join the Junior Florida Cattlemen group on Facebook**

**Follow @Junior\_Florida\_Cattlemen on Instagram**

**Check out our Linktree @JuniorFloridaCattlemen**



**QR Code to the JFCA Linktree**

***Would you consider joining the JFCA family as a SPONSOR?***

***SPONSORSHIPS allow us to provide opportunities to our members, we would love to have YOUR SUPPORT!***

***Check out our sponsorship package by scanning the QR CODE above. Sponsorship packages are on our Linktree.***

# GENERAL HEIFER INFORMATION

- **If there are 5 or less head of cattle entered in a division, all cattle will be exhibited in a single class.**
- **At each show we will name a Grand Champion, Reserve Champion and 3<sup>rd</sup> Overall in each heifer division.**
- At the completion of all female divisions, we will then select our **Top 5 Supreme Heifers**. The Grand & Reserve Heifers in all female divisions (with the exception of Bred & Owned divisions) will be eligible to come back for the Supreme Heifer drive.
- **Cow/Calf Information –**
  - If a calf is shown by their dam's side, that calf CANNOT show as an individual entry on its own. You must choose one or the other. NO EXCEPTIONS.
  - **Females in the REGISTERED Female Divisions** ( Brangus, Brahman, Simmental, AOB) with a calf by their side will continue to show by age.
  - **Females in the Brahman Influenced Heifer Division or Crossbred (non-registered) Heifer Division** with a calf by their side will show in a Cow/Calf class which will be held at the end of the division. Cows and calves will be weighed together.
- **Once you enter a Division – that is the division that you will show in for the entire year.** For example, if you start in the Simmental Division you MAY NOT decide to hop over to the Crossbred or AOB Division at later shows. Our Division Coordinators will be checking ALL entries for EVERY show to ensure you are in the correct division.
- If you are showing **REGISTERED Females**, we highly encourage you to show within the proper Division. This ensures that we can maintain these division offerings to our participants. **Registration papers are required to be in a registered heifer division.**
- **If you have a BRAHMAN INFLUENCED HEIFER, she MUST be classified by our committee.** The decision of the committee is FINAL. Discussions with our committee are encouraged, but disrespectful behavior will not be tolerated. **There will be classification at EVERY show in the series!**
- For classification information, please refer to the supplemental documents offered at the end of this packet.
- **REGISTERED HEIFERS MUST REMAIN IN THE NAME OF THE EXHIBITOR. If a registered animal is sold to another exhibitor (so there is a new owner on the papers) after the start of the series, please just simply notify us of the change and the heifer can “start fresh” with the new owner. However, no additional transfers will be acknowledged and/or allowed.**
- **NON-REGISTERED HEIFERS -** Points will be tabulated for animals and kept accordingly, using their tattoo brand or tag number. The first exhibitor to show an animal will be assigned as the owner for that animal, and if a different exhibitor brings it to a show, then no points will be given to that exhibitor or to that animal moving forward. **UNLESS the change is due to a “sale” of the heifer. If a heifer is sold after the start of the series, please just simply notify us of the change (complete with proof of the sale) and the heifer can “start fresh” with the new owner. However, no additional transfers will be acknowledged and/or allowed.**

## **Brahman Influenced Heifers:**

Division Coordinator – Rick Hartman

- **Must be 30 months or younger at the start of the series July 27, 2024.**
- Must exhibit and maintain prominent **BRAHMAN** breed characteristics or have registration papers that indicate a Brahman Cross breed - Braford, Simbrah, Santa Gertrudis, Brahman F1, etc. (Please see information at the end of this packet for clarification)
- Brahman Influenced Heifers will be shown by weight.
- Top 3 will be awarded and placed. Grand and Reserve Champions will be eligible to come back for the Supreme Heifer Top 5 drive.
- Points will be tabulated for animals and kept accordingly, using their tattoo brand or tag number. The first exhibitor to show an animal will be assigned as the owner for that animal, and if a different exhibitor brings it to a show, then no points will be given to that exhibitor or to that animal moving forward. **UNLESS the change is due to a “sale” of the heifer. If a heifer is sold after the start of the series, please just simply notify us of the change (complete with proof of the sale) and the heifer can “start fresh” with the new owner. However, no additional transfers will be acknowledged and/or allowed.**

## **Registered Brangus Heifers (Red Brangus, Black Brangus and UltraBlack):**

Division Coordinator – TBA

- **Must be 30 months or younger at the start of the series July 27, 2024.**
- Registered Brangus Females will be shown by birthdate.
- **REGISTRATION papers from the International Brangus Breeders Association (IBBA) will be required.**
- Exhibitors must have 50% ownership (with exact exhibitor name on the registration paper signifying ownership), in order for a female to be shown in this division.
- Once you submit papers, you will not need to submit them over and over again. Please bring originals to each show to be looked at during check in. You can submit copies of your registration papers to: [JFCAPointSeries@gmail.com](mailto:JFCAPointSeries@gmail.com)
- Top 3 will be awarded and placed. Grand and Reserve Champions will be eligible to come back for the Supreme Heifer Top 5 drive.
- Points will be tabulated for animals and kept accordingly, using their tattoo brand or tag number. The first exhibitor to show an animal will be assigned as the owner for that animal.
- **REGISTERED HEIFERS MUST REMAIN IN THE NAME OF THE EXHIBITOR. If a registered animal is sold to another exhibitor (so there is a new owner on the papers) after the start of the series, please just simply notify us of the change and the heifer can “start fresh” with the new owner. However, no additional transfers will be acknowledged and/or allowed.**

## **Registered Brahman Heifers (Gray Brahman and Red Brahman):**

Division Coordinator – Allyson Trimble

- **Must be 30 months or younger at the start of the series July 27, 2024.**
- Registered Brahman Females will be shown by birthdate.
- **REGISTRATION papers from the American Brahman Breeders Association (ABBA) will be required.**
- Exhibitors must have 50% ownership (with exact exhibitor name on the registration paper signifying ownership), in order for a female to be shown in this division.
- Once you submit papers, you will not need to submit them over and over again. Please bring originals to each show to be looked at during check in. You can submit copies of your registration papers to: [JFCAPointSeries@gmail.com](mailto:JFCAPointSeries@gmail.com)
- Top 3 will be awarded and placed. Grand and Reserve Champions will be eligible to come back for the Supreme Heifer Top 5 drive.
- Points will be tabulated for animals and kept accordingly, using their tattoo brand or tag number. The first exhibitor to show an animal will be assigned as the owner for that animal
- **REGISTERED HEIFERS MUST REMAIN IN THE NAME OF THE EXHIBITOR. If a registered animal is sold to another exhibitor (so there is a new owner on the papers) after the start of the series, please just simply notify us of the change and the heifer can “start fresh” with the new owner. However, no additional transfers will be acknowledged and/or allowed.**

## **Registered Simmental Heifers:**

Division Coordinator – Lizzie Whitehead

- **Must be 30 months or younger at the start of the series July 27, 2024.**
- Registered Simmental Females will be shown by birthdate.
- **REGISTRATION papers from the American Simmental Association (ASA) will be required.**
- Exhibitors must have 50% ownership (with exact exhibitor name on the registration paper signifying ownership), in order for a female to be shown in this division.
- Once you submit papers, you will not need to submit them over and over again. Please bring originals to each show to be looked at during check in. You can submit copies of your registration papers to: [JFCAPointSeries@gmail.com](mailto:JFCAPointSeries@gmail.com)
- Top 3 will be awarded and placed. Grand and Reserve Champions will be eligible to come back for the Supreme Heifer Top 5 drive.
- Points will be tabulated for animals and kept accordingly, using their tattoo brand or tag number. The first exhibitor to show an animal will be assigned as the owner for that animal.
- **REGISTERED HEIFERS MUST REMAIN IN THE NAME OF THE EXHIBITOR. If a registered animal is sold to another exhibitor (so there is a new owner on the papers) after the start of the series, please just simply notify us of the change and the heifer can “start fresh” with the new owner. However, no additional transfers will be acknowledged and/or allowed.**

## **Registered AOB Heifers:**

Division Coordinator – Clay Whitehead

- **The Registered AOB Heifer Division consists of any REGISTERED Bos Taurus Breed heifer, other than Angus and Simmental. For example, but not limited to – Hereford, Shorthorn, Maine Anjou, Chi, or similar percentage breeds.**
- **Must be 30 months or younger at the start of the series July 27, 2024.**
- Registered AOB Females will be shown by birthdate.
- **REGISTRATION papers from a BREED ASSOCIATION will be required.**
- Exhibitors must have 50% ownership (with exact exhibitor name on the registration paper signifying ownership), in order for a female to be shown in this division.
- Once you submit papers, you will not need to submit them over and over again. Please bring originals to each show to be looked at during check in. You can submit copies of your registration papers to: [JFCAPointSeries@gmail.com](mailto:JFCAPointSeries@gmail.com)
- Top 3 will be awarded and placed. Grand and Reserve Champions will be eligible to come back for the Supreme Heifer Top 5 drive.
- Points will be tabulated for animals and kept accordingly, using their tattoo brand or tag number. The first exhibitor to show an animal will be assigned as the owner for that animal.
- **REGISTERED HEIFERS MUST REMAIN IN THE NAME OF THE EXHIBITOR. If a registered animal is sold to another exhibitor (so there is a new owner on the papers) after the start of the series, please just simply notify us of the change and the heifer can “start fresh” with the new owner. However, no additional transfers will be acknowledged and/or allowed.**



## **Registered Angus Heifers (Black Angus and Red Angus):**

Division Coordinator – Dale Locke

- **Must be 30 months or younger at the start of the series July 27, 2024.**
- Registered Red and Black Angus Females will be shown by birthdate.
- **REGISTRATION papers from the American Angus Association or American Red Angus Association will be required.**
- Exhibitors must have 50% ownership (with exact exhibitor name on the registration paper signifying ownership), in order for a female to be shown in this division.
- Once you submit papers, you will not need to submit them over and over again. Please bring originals to each show to be looked at during check in. You can submit copies of your registration papers to: [JFCAPointSeries@gmail.com](mailto:JFCAPointSeries@gmail.com)
- Top 3 will be awarded and placed. Grand and Reserve Champions will be eligible to come back for the Supreme Heifer Top 5 drive.
- Points will be tabulated for animals and kept accordingly, using their tattoo brand or tag number. The first exhibitor to show an animal will be assigned as the owner for that animal.
- **REGISTERED HEIFERS MUST REMAIN IN THE NAME OF THE EXHIBITOR. If a registered animal is sold to another exhibitor (so there is a new owner on the papers) after the start of the series, please just simply notify us of the change and the heifer can “start fresh” with the new owner. However, no additional transfers will be acknowledged and/or allowed.**

## **Crossbred (non-registered) Heifers:**

Division Coordinator – Nikki Hobby

- **Must be 30 months or younger at the start of the series July 27, 2024.**
- Must exhibit **Bos Taurus** breed characteristics.
- Females in this Division are **non-registered cattle**. These cattle should NOT exhibit predominant Bos Indicus (Brahman) traits.
- **Crossbred (non-registered) Heifers** will be shown by weight.
- Top 3 will be awarded and placed. Grand and Reserve Champions will be eligible to come back for the Supreme Heifer Top 5 drive.
- **Points will be tabulated for animals and kept accordingly, using their tattoo brand or tag number. The first exhibitor to show an animal will be assigned as the owner for that animal, and if a different exhibitor brings it to a show, then no points will be given to that exhibitor or to that animal moving forward. UNLESS the change is due to a “sale” of the heifer. If a heifer is sold after the start of the series, please just simply notify us of the change (complete with proof of the sale) and the heifer can “start fresh” with the new owner. However, no additional transfers will be acknowledged and/or allowed.**



# **BRED & OWNED Cattle**

Questions, please email [JFCAPointSeries@gmail.com](mailto:JFCAPointSeries@gmail.com)

**\*\*\*PLEASE READ\*\*\* - THE PURPOSE OF THIS DIVISION IS TO ALLOW EXHIBITORS WHO OWN A COW OR GROUP OF COWS, THAT ARE MAKING BREEDING DECISIONS ON THAT COW OR GROUP OF COWS, AND THEN CHOOSING TO EXHIBIT THE OFFSPRING CREATED FROM THAT MATING (HEIFER OR STEER) A CHANCE TO BE REWARDED FOR THAT EFFORT.**

**Bred & Owned Steers** - Commercial & Brahman Influenced Steers

**Bred and Owned Heifers** - Registered AOB, Simmental & Angus, and Crossbred (Non-Registered) Heifers

**Bred & Owned American Influenced Heifers** - Registered Brahman & Brangus, Brahman Influenced Heifers

**\*There is NOT a Bred & Owned Bull Division\***

- Exhibitors must mark their animal as a Bred and Owned at time of entry, to be eligible to compete in that division – **EXHIBITOR MUST be Breeder, 1st, and continuous owner!**
- A top 5 will be awarded and placed.
- Points will be tabulated for animals and kept accordingly, using their tattoo brand.
- If a protest is made about the validity of the animal being bred & owned, we will contact the exhibitor/family. If proof is provided that the animal is NOT in fact a Bred & Owned (i.e – pictures, sale catalogs, proof of purchase) then the animal will be disqualified from the show and all remaining shows in the series. The exhibitor will forfeit their right to enter a Bred & Owned animal at ANY future JFCA shows.
- We understand that in some cases there are partial or percentage ownerships of cattle. If the exhibitor or the exhibitor's family DID NOT own at least 50% of the Dam (Mother) of the calf being claimed as Bred & Owned...then you do not qualify.
- The decision of the JFCA Point Series Committee is final. If the committee requests proof of ownership of the animal or the dam, then you must be prepared to share that with them.
- **You CANNOT exhibit Bred & Owned Cattle if you DO NOT own the ANIMAL and if you did not own the MOTHER. (No leases, no loans, no borrows).**
- **Please also note that branded cattle SHOULD NOT have a brand of another ranch/person - Brands represent ownership and if you are exhibiting an animal that is branded with someone else's brand, you are NOT the owner.**

We have had A LOT of questions on the Bred & Owned Divisions for the JFCA Point Series. Due to the size that the series has grown to, one thing we are short on at every show is TIME. So, a way that the JFCA Point Series Committee decided to combat the problem of time vs offering divisions, **was to concurrently run the Bred & Owned Divisions while our other divisions are being judged.**

**Concurrently running the Bred & Owned with our divisions means - each steer or heifer that is entered in a show can also be entered as a Bred & Owned (if they meet the criteria) and will then earn TWO SETS of points when they enter the ring.....Points for the Division they are showing in AND points for the Bred & Owned division that they qualify for.**

Example for reference.....Suzy has a Crossbred Heifer, SC01 that she enters into a show. She enters SC01 as a crossbred heifer AND she enters her in the Bred & Owned Heifer division (because Suzy owned SC01's momma, AI bred her, thus producing SC01). Suzy's heifer is in Class 4 Crossbred Heifers, along with 9 other exhibitors (including her friend Ricky...more on him later). In that class of 10 crossbred heifers....4 are Bred & Owned Entries. Suzy's heifer places 3rd in the class and therefore earns 3rd place points in the Crossbred Heifer Division. SC01 was the HIGHEST placing Bred & Owned in the class so.....she also earns 1st place Bred & Owned points for that division! Because Suzy's heifer was the highest placing Bred and Owned, she has also earned the chance to come back for the Bred & Owned Heifer Top 5 Drive later in the day. Suzy's friend Ricky (remember we mentioned him earlier) was also in the class with his heifer, who was ALSO a Bred and Owned entry. Ricky placed 6th in the class.....earning 6th place Crossbred Heifer points AND because he was the SECOND highest Bred & Owned in the class, he will earn 2nd place Bred & Owned points AND Ricky's heifer will be on "standby" for the Bred & Owned Top 5 drive later on....he will be definitely cheering on Suzy....cause he wants a shot too!!

We hope this example helps give you a clearer understanding of the Bred & Owned Divisions. Although this way of running concurrent divisions is not new...we know that we have new families joining us and we want to make sure everyone understands

things clearly. You might be thinking...."But at the Kickoff Show there is an actual Bred & Owned show".... well, you are correct! At the Kickoff Show, we have a stand-alone Bred and Owned Show for our steers and heifers.... but we also have some extra time available to do that!

***This Show Series and these shows are graciously brought to you by an amazing crew of VOLUNTEERS. (By the way - we are always looking for additional volunteers to help!) We ask that you keep in mind that these volunteers are HUMAN and will make mistakes.... However, the greatest part about all these volunteers is that WE ALL DO THIS FOR THE KIDS....and NOT just the ones that belong to us.... YOUR kids, the kids from our neighboring counties, the kids we really don't know.... ALL of our AMAZING JFCA members and exhibitors!***

*The JFCA show committee reserves the right to adjust or make emergency revisions, if deemed necessary, throughout the year. However, warning before implementation and complete explanation will be available in advance to any revision, deletion or addition. The rulings of the JFCA Show committee are final.*

### **JFCA Point Series Committee Members:**

Stephanie Conrad – Chair, Rick Hartman – Vice Chair/Chair of Brahman Cattle Classification Sub-Committee

Nikki Hobby, Laura Lee Taylor, Kallee Smith, Lizzie Whitehead, Allyson Trimble, Leeann Black,  
Brian Trimble, Dallas Locke, Dale Locke, Clay Whitehead, Flint Johns,

**Remember to join the Junior Florida Cattlemen group on Facebook**

**Follow @Junior\_Florida\_Cattlemen on Instagram**

**Check out our Linktree @JuniorFloridaCattlemen**



**QR Code to the JFCA Linktree**

***Would you consider joining the JFCA family as a SPONSOR?***

***SPONSORSHIPS allow us to provide opportunities to our members, we would love to have YOUR SUPPORT!***

***Check out our sponsorship package by scanning the QR CODE above. Sponsorships packages are on our Linktree!***

**If you need to reach us, feel free to email us at [JFCAPointSeries@gmail.com](mailto:JFCAPointSeries@gmail.com)**

## **2024 Application of Points**

- **Must be a current JFCA member to participate in the shows offered in the JFCA Point Series**
- Must attend at least 4 shows to be eligible for end of series awards.
- We will only use an exhibitor's top 6 scores for the series, to tabulate final point standings. NO BONUS POINTS will be added for any division.
- Class points will be awarded to animals exhibited by the person who entered them into the show (NO EXCEPTIONS)
- **To tabulate the Top 5 ANIMALS**, we will use their tattoo, brand, or tag number. If a tag number is changed out during the series it is the exhibitor's responsibility to notify the committee by emailing the update to: [JFCAPointSeries@gmail.com](mailto:JFCAPointSeries@gmail.com) Include the exhibitor's name, animal division, old tag # and new tag #.
- **The first exhibitor to show an animal will be assigned as the "owner" for that animal and will be classified as such for the entire series. If a different exhibitor brings that animal to a show, no points will be earned, unless proof of sale can be given.**
- **Exhibitors are only allowed to show THEIR OWN entry during showmanship.** No points will be awarded to a person who is found to have used an animal other than the one they have entered.

### **Top 5 Showmanship Points are awarded as follows:**

- 1<sup>st</sup> – 10 points
- 2<sup>nd</sup> – 9 points
- 3<sup>rd</sup> – 8 points
- 4<sup>th</sup> – 7 points
- 5<sup>th</sup> – 6 points
- 5 points will be awarded for all callbacks in all showmanship categories

### **1<sup>st</sup> through 10<sup>th</sup> in each class will be awarded the following points (a maximum of 10 head is allowed in a class):**

- 1<sup>st</sup> – 10 points
- 2<sup>nd</sup> – 9 points
- 3<sup>rd</sup> – 8 points
- 4<sup>th</sup> – 7 points
- 5<sup>th</sup> – 6 points
- 6<sup>th</sup> – 5 points
- 7<sup>th</sup> – 4 points
- 8<sup>th</sup> – 3 points
- 9<sup>th</sup> – 2 points
- 10<sup>th</sup> – 1 point

### **OVERALL TOP 3/5 in the Divisions will additionally receive:**

- Grand – 10 points
- Reserve – 8 points
- 3<sup>rd</sup> – 6 points
- 4<sup>th</sup> – 4 points
- 5<sup>th</sup> – 2 points



# BRAHMAN INFLUENCED CATTLE CLASSIFICATION

## Classification Information

**BRAHMAN INFLUENCED CATTLE** – Our Brahman Influenced Division cattle will be classified by a committee of individuals who have extensive knowledge of *Bos Indicus Cattle*. We understand that the classification of cattle is 100% subjective and that other shows/series might have varying requirements from ours. However, for the purpose of our shows/series our Brahman Influenced Classification Committee will have the final call of placement. They will use consistent criteria at all shows and for all animals. The following criteria will be used for classification and to be classified in one of our American Divisions, cattle MUST meet 3 of the 5 criteria listed below:

- ½ inch of hair or less
- Dewlap must be prominent – the dewlap is defined as the skin from throat to brisket.
- There must be an apparent crest on the neck
- Sheath score (for steers) or navel score (for heifers) of a 2 or better
- Ears are “broken” and come to a point

*These criteria will be printed and available at the scales at all shows.*

*PLEASE review definitions, pictures and explanations below.*

### Glossary

**Brahman Influenced Breeds** - Breeds created in the United States by interbreeding existing breeds, including at least one tropically adapted breed (most often American Brahman).

**Bos Indicus** - Subspecies of cattle originating in south Asia; has a prominent hump on top or in front of shoulder.

**Bos Taurus** - Subspecies of cattle; originated in west Asia but is usually called *European*.

**Registered Cattle** – Cattle that are purebred or predominately one breed. Registered cattle have corresponding papers that have been issued from an official breed association.

**Sheath score** - Scoring system from 1 to 5 based on the length of the sheath (1 = little sheath; 5 = excess sheath).

### Summary

In the commercial beef industry, most cattle are sorted by visual characteristics into numerous groups for marketing purposes. Similarly, during livestock shows, animals can be sorted into breed classes based on visual characteristics. Remember that classifiers are asked to exercise their judgment.

***We understand that there are varying opinions on “American Cattle” or “Brahman Influenced Cattle”. Breeders, producers, those in cattle sales, shows, committees, even states have their own “classification” on what they think these cattle should look like. For our series we will use the above criteria and want to put a special emphasis on the use of Brahman genetics, here in the state of Florida. We put full faith in the individuals that we have asked to serve on this committee, and encourage you to engage in conversation with them if you would like more information on what expectations we have. Please remember that these criteria are specific to OUR SERIES and therefore will be the expectations of our committee when classifying cattle showing in OUR SHOWS.***

***At the end of the day, ALL CATTLE WILL SHOW - NO CATTLE will be disqualified from participation.***



# VISUAL DESCRIPTIONS OF CHARACTERISTICS

Figure 1. Sheath Scores

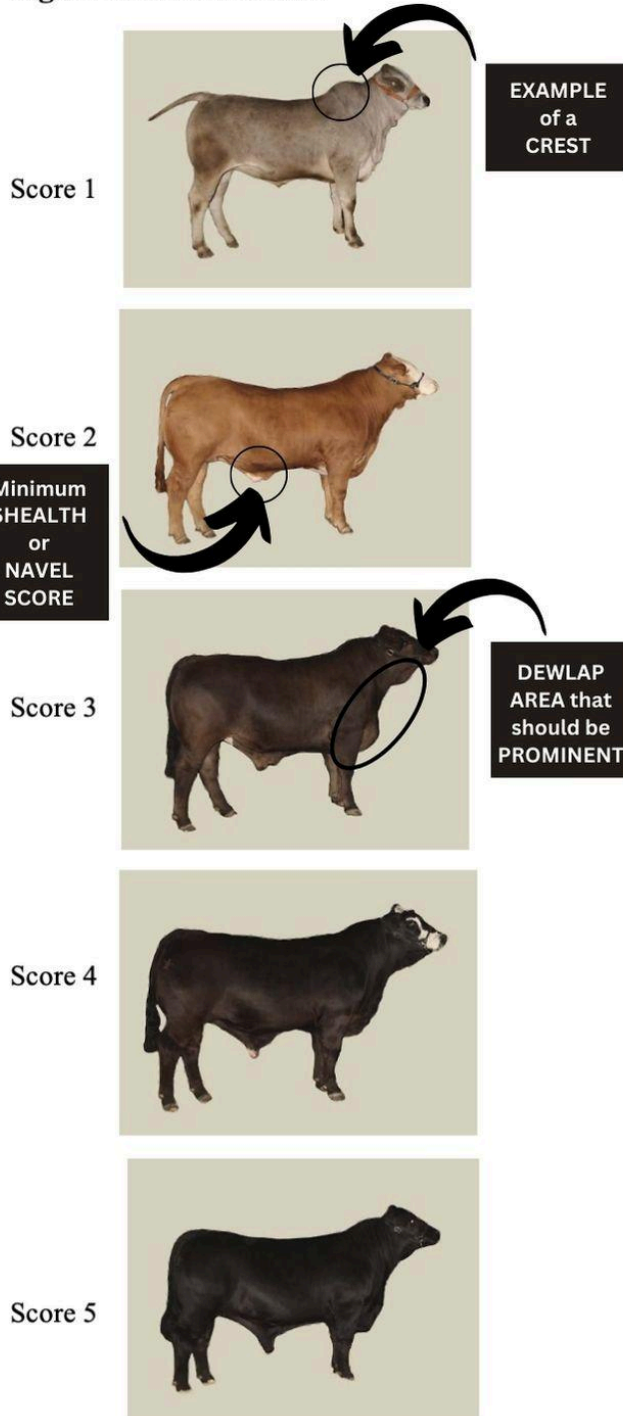


Figure 2. Examples of Ears



NON Brahman Influenced Head and Ears



Brahman Influenced Head and Ears showing signs of being “broken” or downward turned

\*For additional information reference the following site: <http://animalscience.tamu.edu/wp-content/uploads/sites/14/2012/04/2017-21-Texas-Show-Steer-Classification-050916.pdf>