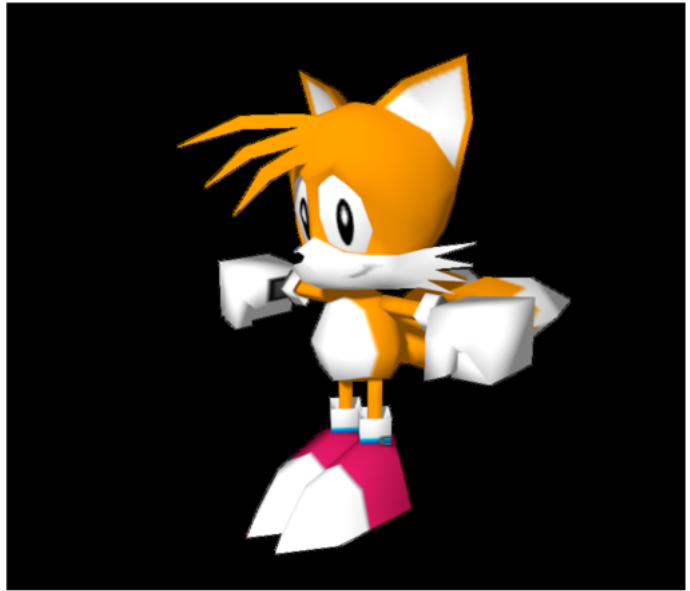


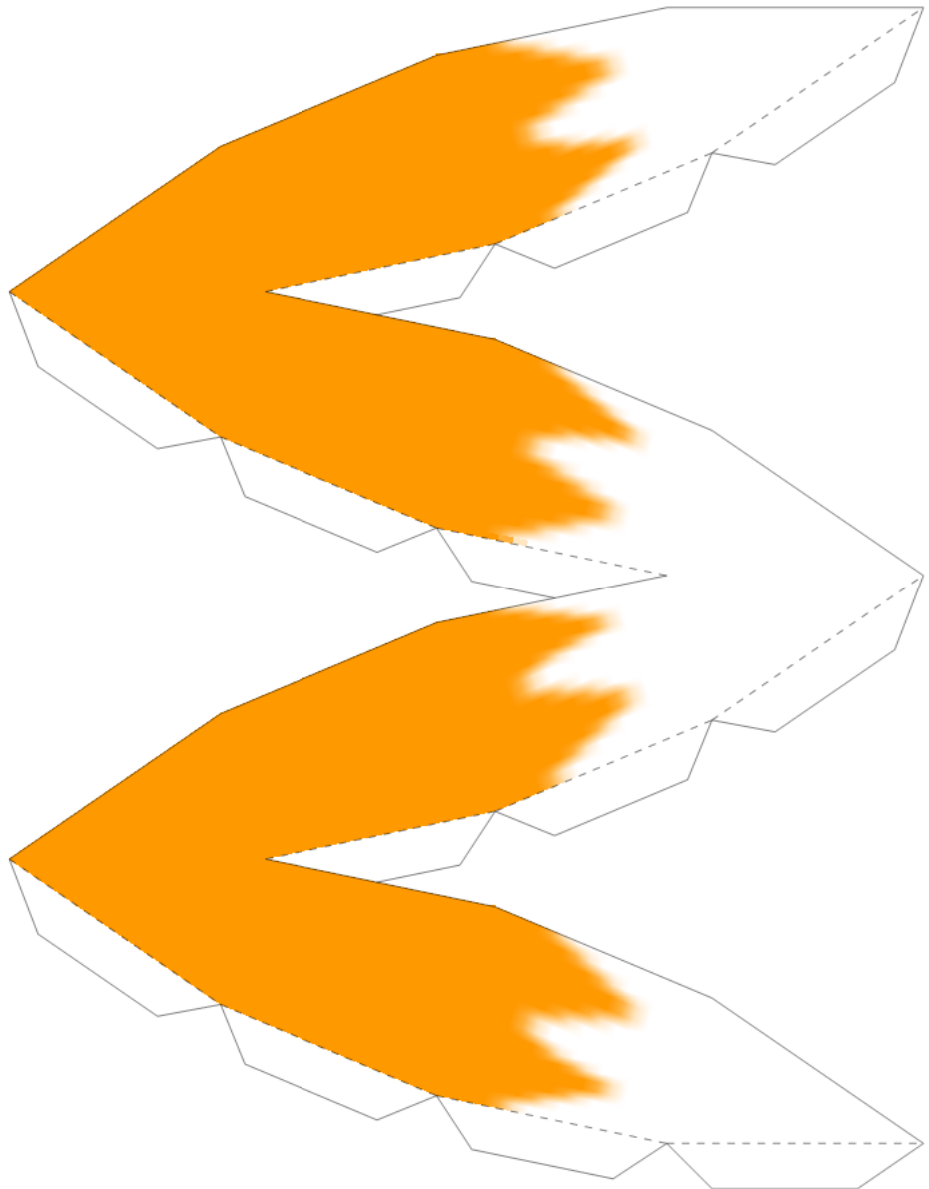
you can put the papercraft in any pose you want

by.jlux

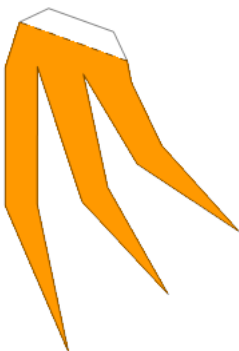
tails papercraft



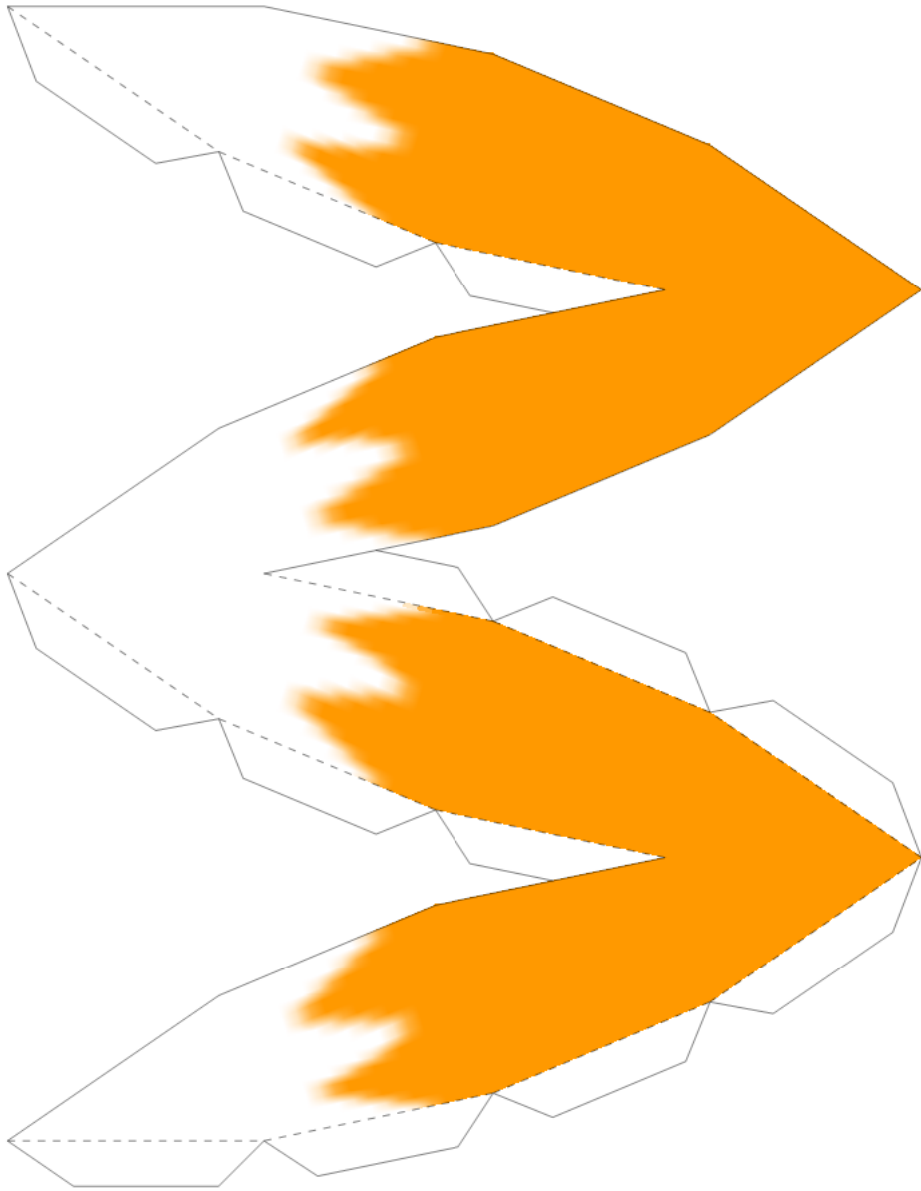
tail



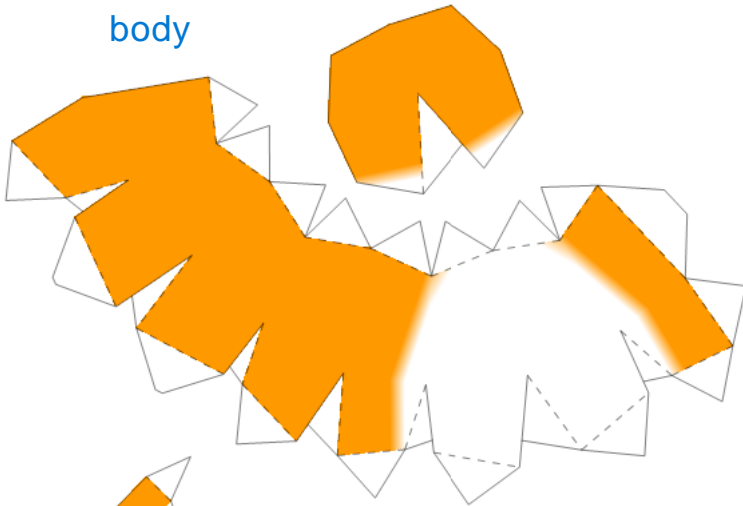
hair



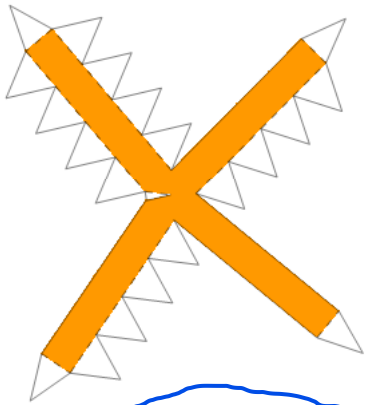
tail



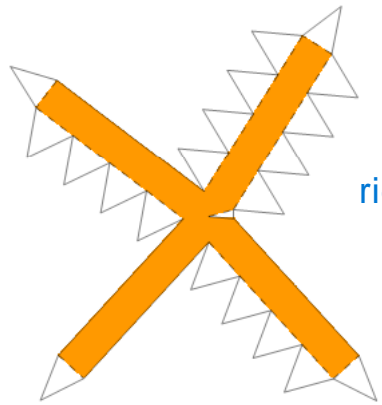
body



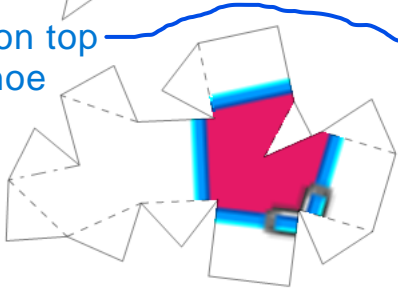
left leg



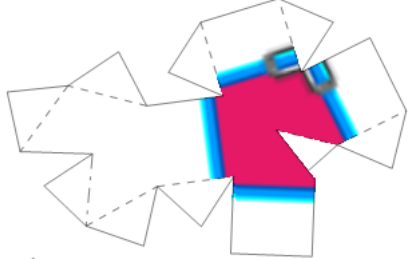
right leg



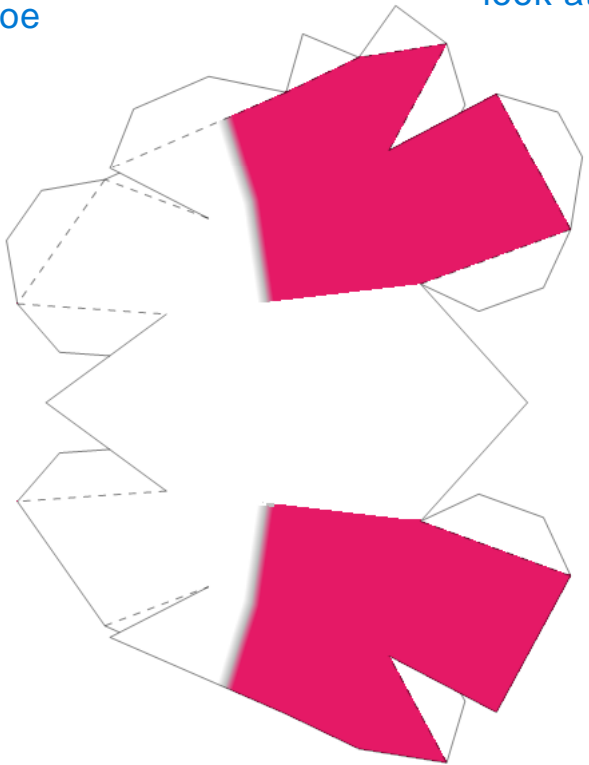
put this on top of the shoe



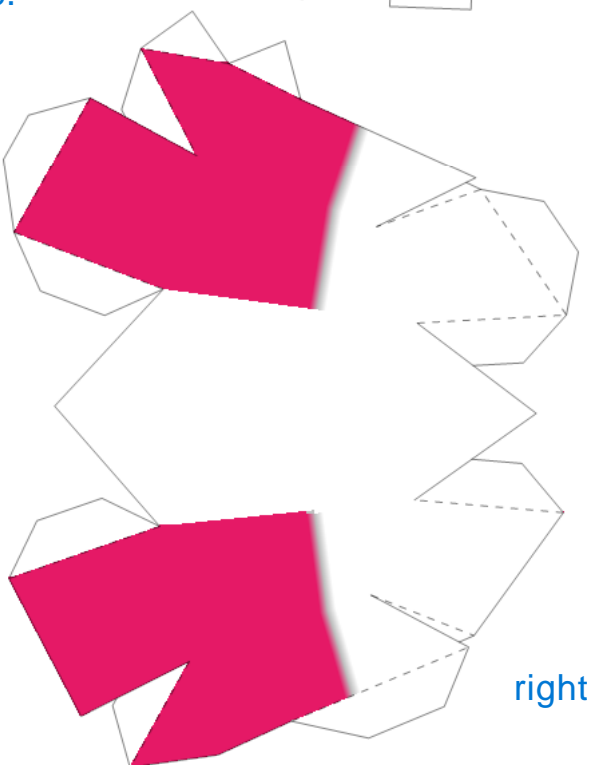
if you don't know what to do, you can always look at the pic.



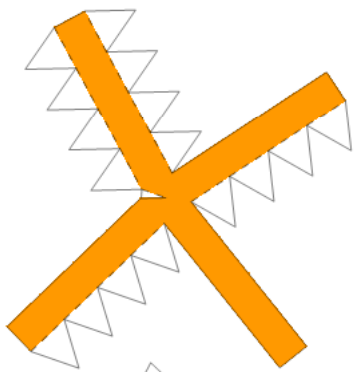
left shoe



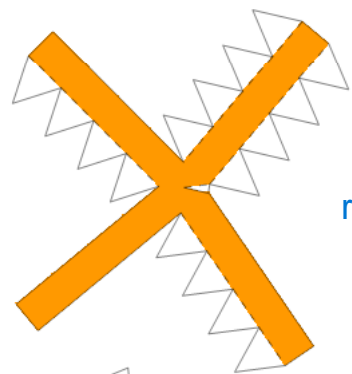
right shoe



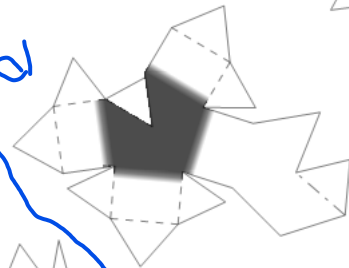
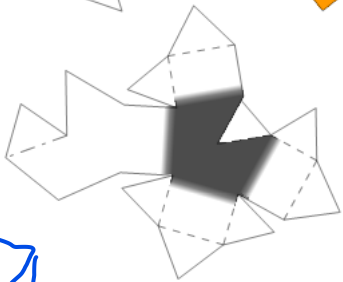
left arm



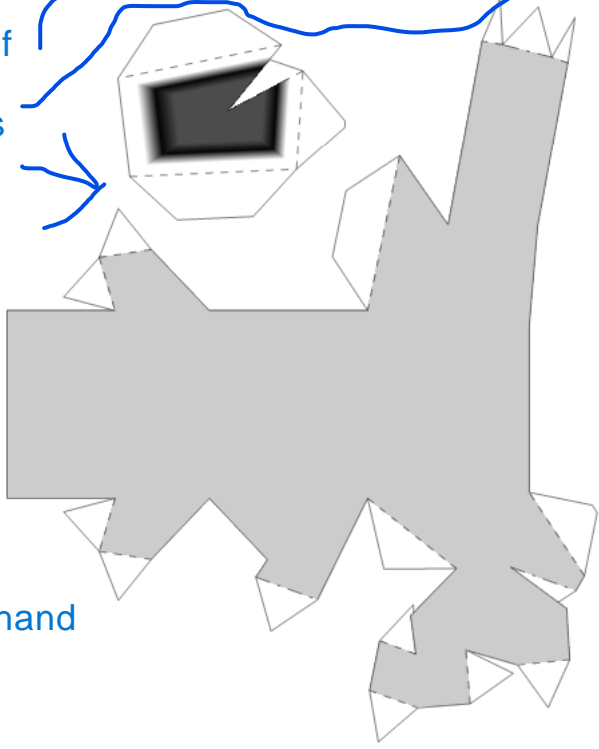
right arm



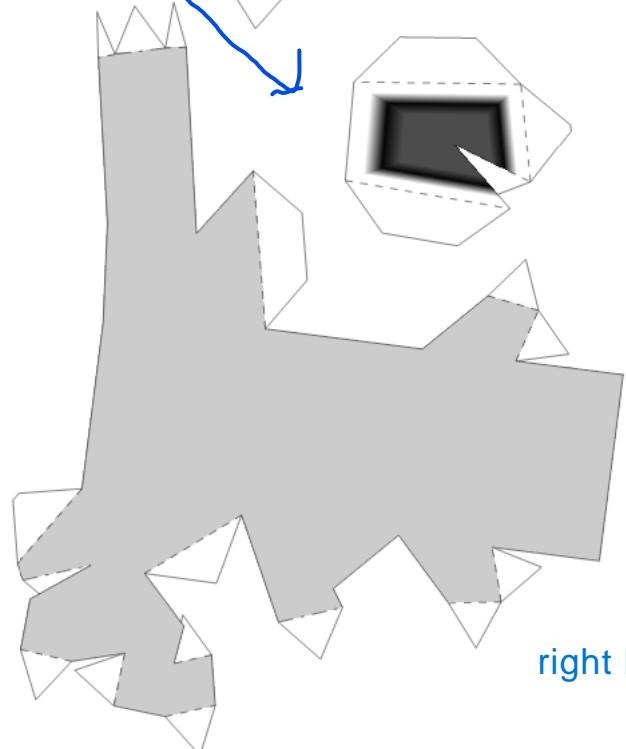
put
both of
these
pieces
on the
hand



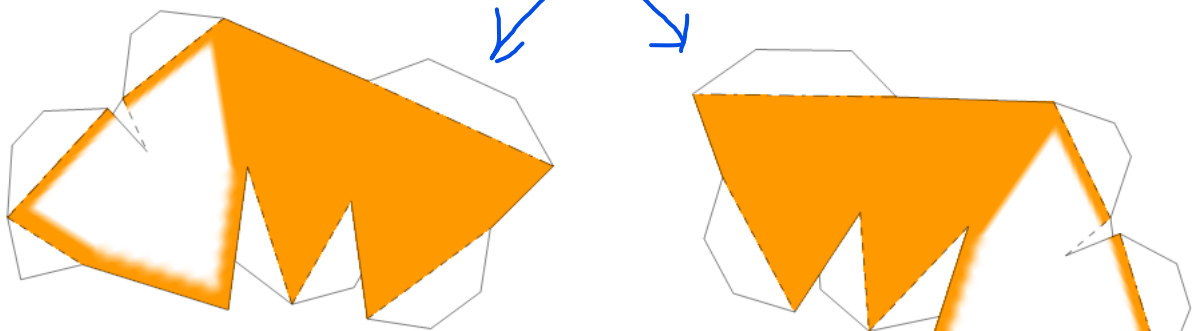
left hand



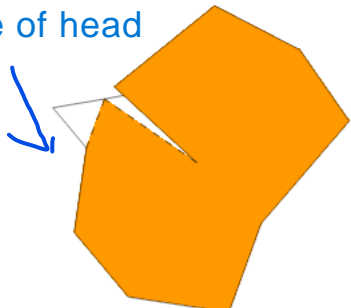
right hand



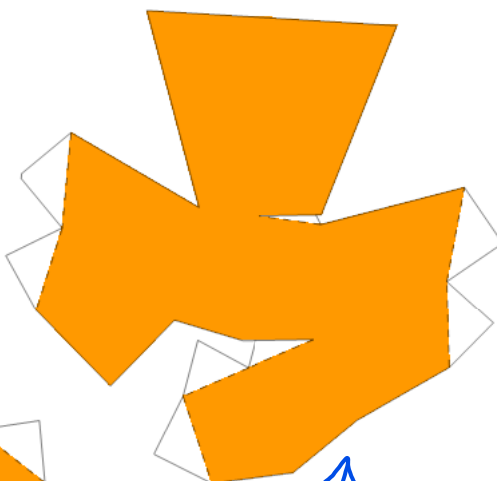
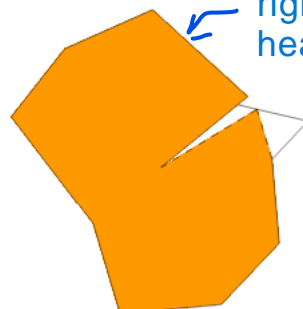
ears



left side of head

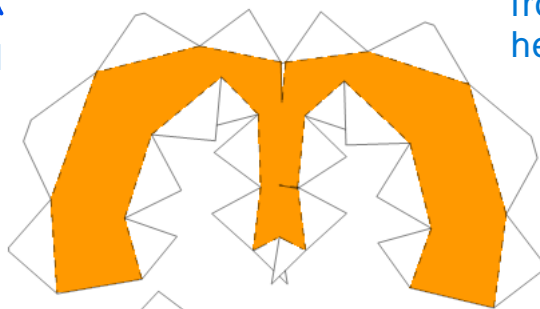


right side of head

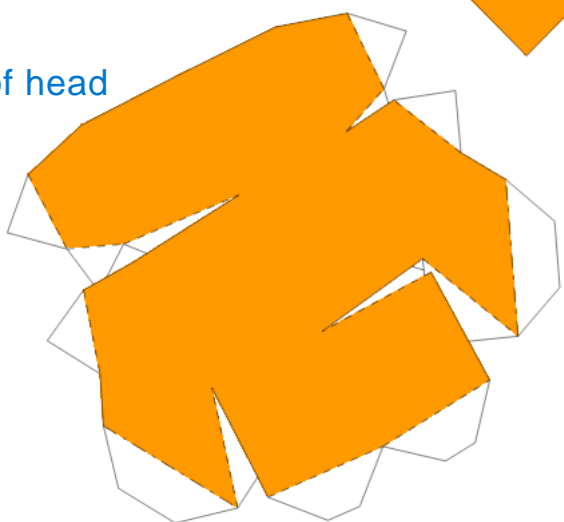


top of head

front of head



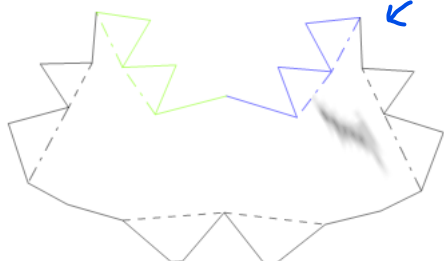
back of head



nose



mouth



put these parts on the sides of the mouth



5/5 (row5 col1)

bottom of head

