



INSTALLATION INSTRUCTIONS:

1. FRONT WALL

WALL MODEL A
WALL MODEL B p.1
WALL MODEL C

2. RIGHT WALL

WALL MODEL A p.2
WALL MODEL B

3. LEFT WALL

WALL MODEL A p.3
WALL MODEL B

3.A WORD CLOUD p.4

Let's make Shubh beautiful!



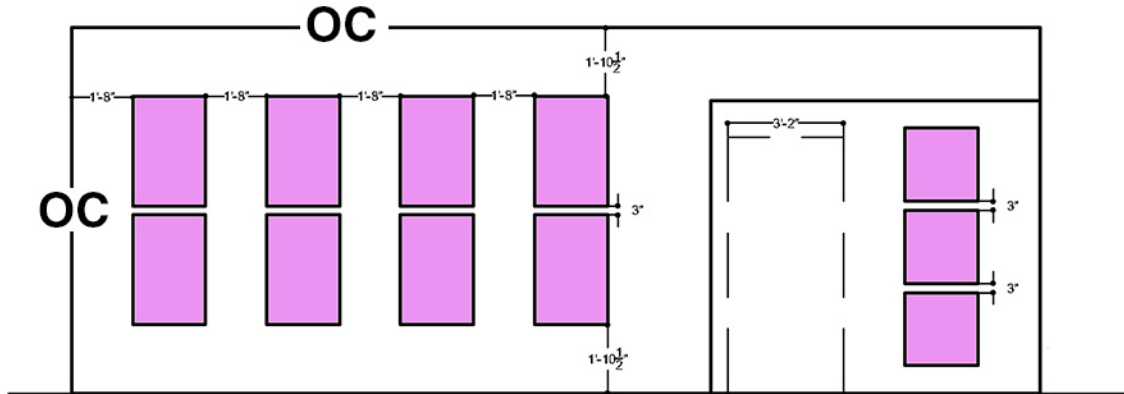
www.rendexdesign.com
www.rendexclientportal.com

773.895.8386

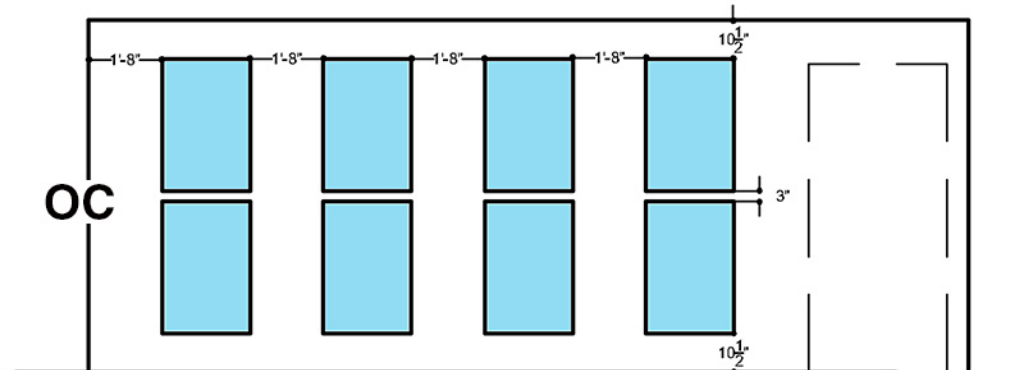


1. FRONT WALL SPACE EQUALLY , OC (ON THE CENTER)

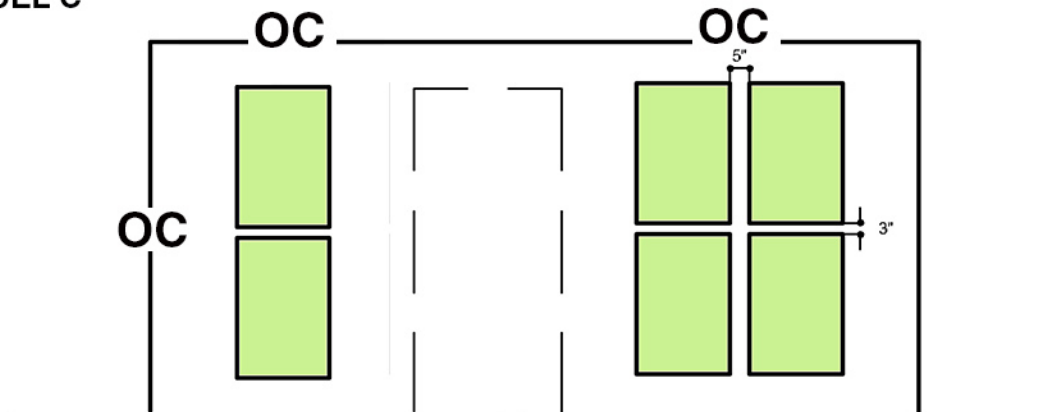
WALL MODEL A



WALL MODEL B



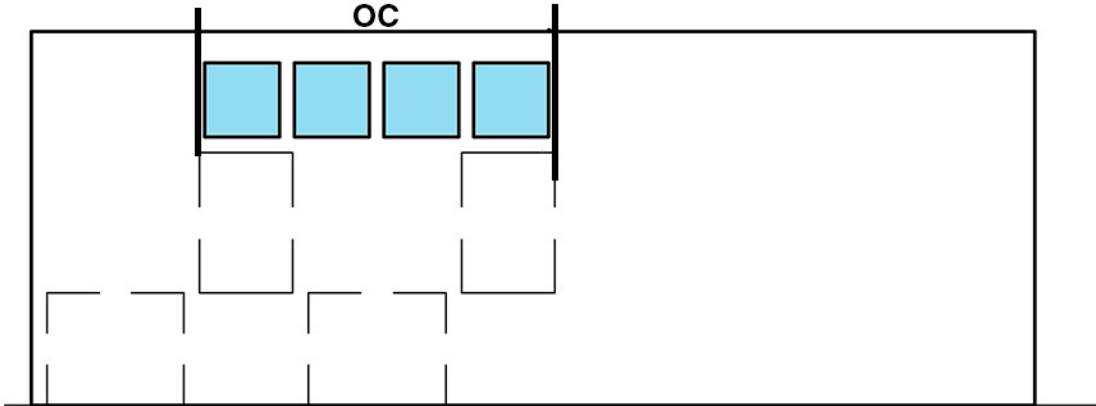
WALL MODEL C





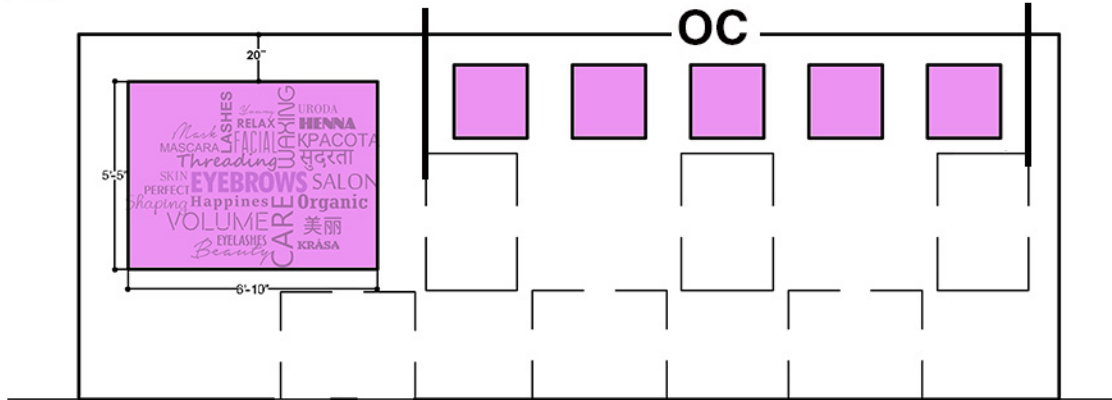
2. RIGHT WALL SPACE EQUALLY , OC (ON THE CENTER)

WALL MODEL A

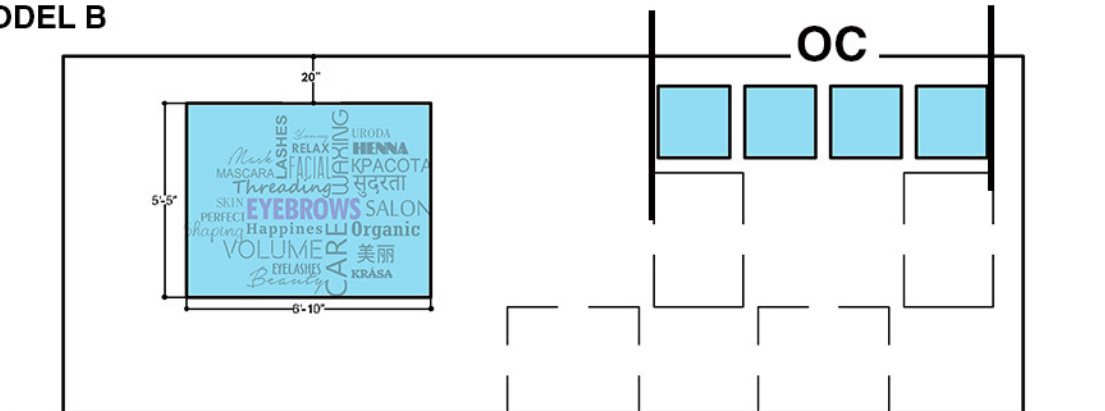


3.LEFT WALL SPACE EQUALLY , OC (ON THE CENTER)

WALL MODEL A



WALL MODEL B



3A.WORD CLOUD
20" BELOW THE CEILING
SCAN FOR VIDEO



1.

GET READY

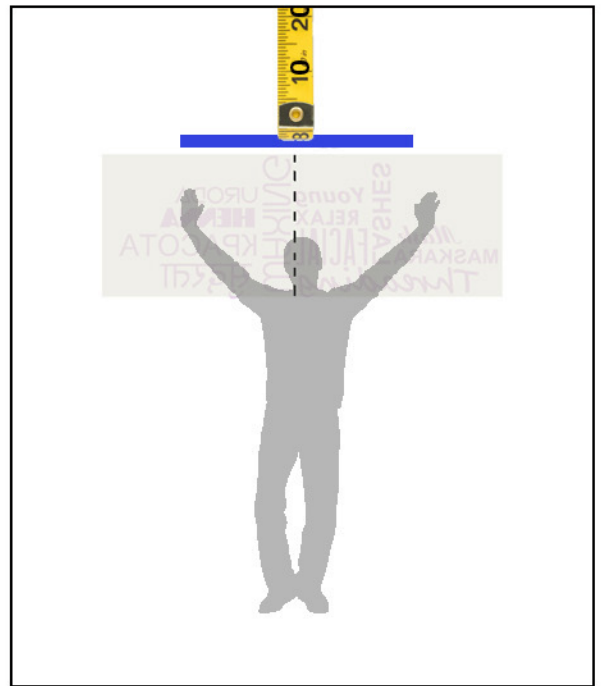


SQUEEGEE INCLUDED



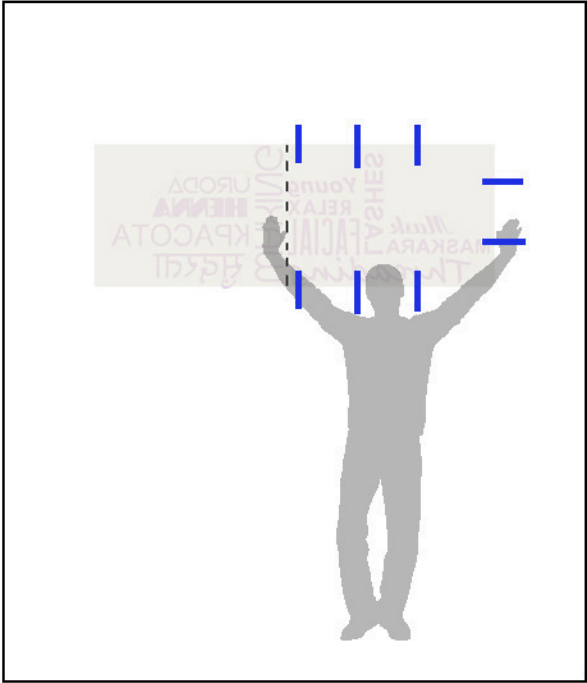
TAPE

2.



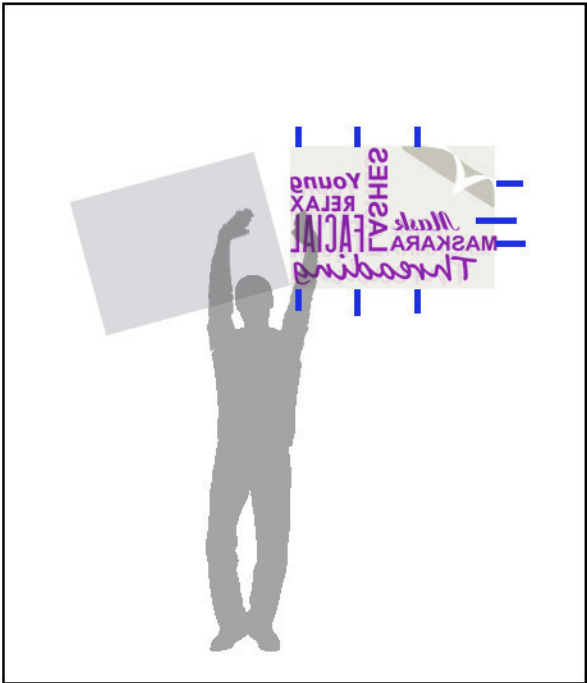
3A.WORD CLOUD

3.



TAPE THE RIGHT SIDE OF THE WORD CLOUD

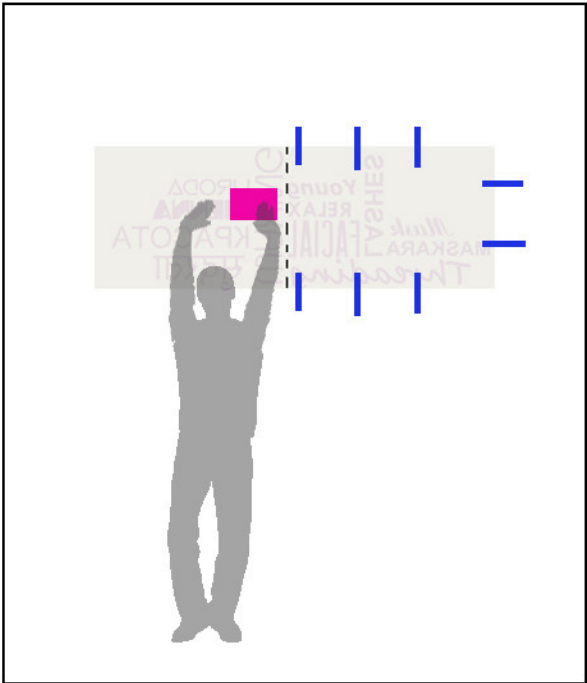
4.



REMOVE HALF OF THE LEFT BACKING BY PULING IT OVER THE CREASE

3A.WORD CLOUD

5.



USE PINK SQUEEGEE WORKING FROM THE CENTER OUTWARDS

6.



REMOVE THE OTHER SIDE OF THE BACKING & REPEAT ON THE OTHER SIDE

3A.WORD CLOUD

7.



**REMOVE THE TOP TRANSFER
BY SLOWLY
PULLING IT AT 180 DEGREE**

8.



**POSITION THE 2ND
PIECE WHERE
THE LETTER
“W IS UNDER THE LETTER W”
AND REPEAT THE PROCESS**