



JULY - SEPTEMBER 2025

www.autolearn.ca

PLEASE NOTE: Due to imposed tariffs on imported products, prices may increase without notice and Inventory levels may change on products.

SHOP & SAVE

For ordering email us your order at support@eautolearn.com and we will send you an invoice confirming your order with shipping charges.

Please include your name - Ship to address & Phone number we accept e-transfer - Visa - MC - American Express - Apple pay - And much more



Milwaukee

**MLW3841-20 \$400⁴⁵
M18™ HOTSHOT™ Jump Starter**

- 50,000 cycle life
- Up to 50 jump starts on a M18 5.0 battery
- 2200 peak amps
- -4F to 120F operating temperatures

M18



K TOOL
INTERNATIONAL

**KT181634 \$209⁴⁵
1/2" Drive HD
Air Impact Wrench**

- 900 ft. lbs. of breakaway torque
- Handle exhaust

K TOOL
INTERNATIONAL

**KT183276 \$295⁴⁵
Long Barrel
Air Hammer**

- 2,500 BPM



**ATLAS
PLATINUM
EQUIPMENT**

**ATEAP-PVL12
12,000 lb. Capacity
ALI Certified Overhead 2-Post Lift**

- Adjustable Height 165" (13' 9") or 177" (14' 9")
- 5 yr Structural - 2 yr Hydraulic - 2 yr Powerunit Warranty

CALL FOR PRICING



**12,000
POUND
CAPACITY**



PROMOTIONS

FROM JUNE 16th TO SEPTEMBER 15th, 2025

*While stocks last, prices subject to change without notice.

**BUY ONE GET ONE
FREE***



IRT2236QTIMAX
1/2" DXS2 Impact Wrench
Std Anvil Quiet
617,45\$



IRT2236QTIMAX-2
1/2" DXS2 Impact
Wrench 2"
Ext Anvil Quiet
675,95\$



IRT2236QTIMAX-G
DXS2 1/2"
Impact Wrench
Friction Ring
Retainer, Green
617,45\$



IRT2236QTIMAX-O
DXS2 1/2"
Impact Wrench
Friction Ring
Retainer, Orange
617,45\$



IRT2236QTIMAX-R
DXS2 1/2"
Impact Wrench
Friction Ring
Retainer, Red
617,45\$

FREE



IRT36QMAXP
1/2" Ultra-compact
Pistol-grip
impact wrench
Value of
342,95\$



IRT2115TIMAX
Impact wrench 3/8"
494,45\$

FREE



IRT307BP
Air Die Grinder
1/4" Collet, Burr, 28000 RPM,
Front Exhaust, 0.25 HP
Value of
109,45\$



IRTW8171-K2
3/4 20V cordless impact
wrench 2 battery kit 200
1 301,45\$

FREE



IRTG5351P
IQV 20V cordless 4.5/5.0"
Right angle grinder & cut-off
tool, 8,000 RPM
Value of
381,95\$



IRT285B-6
Impact wrench 1"
Drive W/6" anvil
1 126,95\$

FREE



IRT327LS-AP
Tire buffer air
Low speed 3,000 RPM HD
Value of **224,95\$**

AND



IRTSK8C5TNP
Socket set
1" drive SAE deep truck
serv socket set 5pc
Value of **228,45\$**

IRTL2022
Battery - 20V
IQV 5 AMP
356,95\$

**BUY ONE GET ONE
FREE***



IRTW9691-K4E
1" cordless impact
wrench with 6" anvil
extension and 4 batteries
2 548,95\$



IRTW9491-K4E
20V 1" D-Handle
2 607,45\$

FREE



IRT231HAP
1/2" Super duty impact
Wrench 470ft lbs. torque
Value of
323,95\$

IRTH3111-K1
20V Cordless Heat Gun
1 Battery Kit
453,45\$



FREE

IRTBL2022P
Battery - 20V IQV 5 AMP
Value of
356,95\$

TEXA

A/C SERVICES

RECOVERY
RECYCLING
RECHARGING

KONFORT Shop Level Professional A/C Service Stations - Full Automatic Functions

KONFORT 780 TOUCH

DUAL R134a / R1234yf

Two Separate 20lb Tanks In Cabinet
Integrated Refrigerant Identifier

KONFORT 760 TOUCH

R1234yf System

20lb Tank - Rear Door Easy Access
Integrated Refrigerant Identifier

KONFORT 750R

R134a System

LARGER 50lb Tank In Cabinet
9ft Service Hoses - Commercial Vehicles



10 INCH
Glove Touch
HD Display
Android OS



10 INCH
Glove Touch
HD Display
Android OS



MULTI-BRAND DIAGNOSTICS SPECIALIST

MADE IN ITALY / OEM Partner / OE LEVEL Diagnostic Platform

KONFORT 780TOUCH

DUAL R134a / R1234yf

10" TOUCHSCREEN
Glovetouch Sensitivity
Industrial Display



DUAL GAS

- Two Separate 20LB Tanks
- Separate Circuit Systems For Recovery / Recycling / Recharging
- Alternate Services On Vehicles Equipped With Refrigerants R134a and R1234yf

SOFTWARE

Full Automatic Functions
Simplified Maintenance
Highest Efficiency - Recovery Over 97%
Recovered Oil Scale Control
Auto Compensation Recharge Line Length
Auto Manage Non-Condensable Gasses
Auto Maintenance Alarms

KONFORT 760TOUCH

R1234yf SYSTEM

10" TOUCHSCREEN
Glovetouch Sensitivity
Industrial Display



SINGLE GAS

- Single 20LB Tank
- Airtight Oil Bottles
- Full Auto Service Manager
- Scale Lock / Unlock Device
- Refrigerant Weight Accuracy
- 9ft Service Hoses

SOFTWARE

Full Automatic Functions
Simplified Maintenance
Highest Efficiency - Recovery Over 97%
Recovered Oil Scale Control
Auto Compensation Recharge Line Length
Auto Manage Non-Condensable Gasses
Auto Maintenance Alarms

KONFORT 750R

R134a SYSTEM

5.7" TFT DISPLAY
Multil Language
Full Color



HARDWARE

- LARGER 50lb Tank In Cabinet
- 9ft Service Hoses - Commercial Vehicles
- Charging Accuracy +/- 0.5 oz
- High Efficiency - Recovery Over 95%
- 4 CM Double Stage Vacuum Pump

SOFTWARE

- Full Automatic Functions
- Simplified Maintenance
- Auto Oil Injection - Scale Control
- Recovered Oil Scale Control
- Auto Compensation Recharge Line Length
- Auto Manage Non-Condensable Gasses
- Auto Maintenance Alarms

THREE SERVICE OPTIONS

- US CARS DATABASE - Vehicle M/M Selection
- CUSTOMIZED SERVICE - Manually Enter Quantity
- myDATABASE - Create Your Own Database

OPERATING PROCEDURES

- Select Vehicle Make / Model To Start Recharge Process
- Any Possible Issues Indicated By Clear Error Messages
- Refrigerant Scale Operates At Max Error +/-15 Grams (0.52 Oz)
- Detect Vehicle A/C System Leaks and Display Warning
- Separate Scale Measures Refrigerant Quantity Recovered
- Accurate Scale Monitors Station Circuits For Possible Leaks
- Routine Maintenance Tasks Changing Oil and Filter-Hydrator



REPORTS
Thermal
Printer Or
Workshop
Printer

ALWAYS CONNECTED

- Printed Service Reports
- Software / Firmware Updates
- Remote Tech Assistance
- Accessory Tool Use

KONTORT APP

- Smartphone Connect
- Service Process Status
- Fault Notifications
- Manage Maintenance

THREE SERVICE OPTIONS

- US CARS DATABASE - Vehicle M/M Selection
- CUSTOMIZED SERVICE - Manually Enter Quantity
- myDATABASE - Create Your Own Database

OPERATING PROCEDURES

- Select Vehicle Make / Model To Start Recharge Process
- Any Possible Issues Indicated By Clear Error Messages
- Refrigerant Scale Operates At Max Error +/-15 Grams (0.52 Oz)
- Detect Vehicle A/C System Leaks and Display Warning
- Separate Scale Measures Refrigerant Quantity Recovered
- Accurate Scale Monitors Station Circuits For Possible Leaks
- Routine Maintenance Tasks Changing Oil and Filter-Hydrator



REPORTS
Thermal
Printer Or
Workshop
Printer

ALWAYS CONNECTED

- Printed Service Reports
- Software / Firmware Updates
- Remote Tech Assistance
- Accessory Tool Use

KONTORT APP

- Smartphone Connect
- Service Process Status
- Fault Notifications
- Manage Maintenance

OPTIONAL THERMAL PRINTER

- Printed Report Of Work Performed After Service
- Confirm Quantity Of Refrigerant Recovered
- Type Of Oil Injected Into The System
- Pressure In A/C System After Recharging

OPERATING PROCEDURES

- Select Vehicle Make / Model To Start Recharge Process
- Full Automatic Operations Include Oil & UV Tracer Injection
- Any Possible Issues Indicated By Clear Error Messages
- Refrigerant Scale Operates At Max Error +/-5 Grams (0.18 Oz)
- Detect Vehicle A/C System Leaks and Display Warning
- Separate Scale Measures Refrigerant Quantity Recovered
- Accurate Scale Monitors Station Circuits For Possible Leaks
- Routine Maintenance Tasks Changing Oil and Filter-Hydrator



SD CARD MEMORY
Remove For Windows PC
Updatable Software
Vehicle Database and
Maintenance Operations



KONTORT APP

- Smartphone Connect
- Service Process Status
- Fault Notifications
- Manage Maintenance

Smart Selection / Keyword Search To Minimize Steps Required To Start A Charging Service



SINGLE SCREEN Navigation Menu



SINGLE SCREEN Operating Parameters



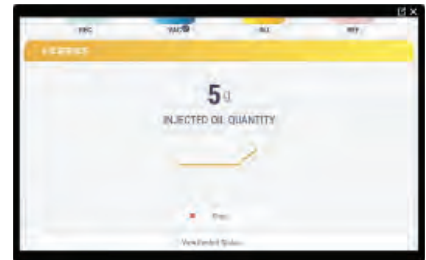
WiFi Remote Assist / Check Updates



RECOVERY - Status / Remaining Time



VACUUM - Leak Check / Status



OIL INJECTION - Correct Quantity



REFRIGERANT CHARGE - Status



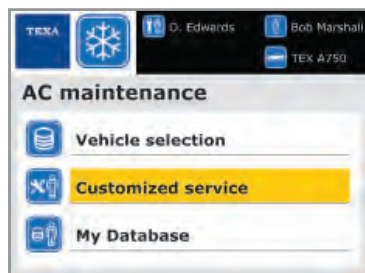
Failure Detection & Error Status



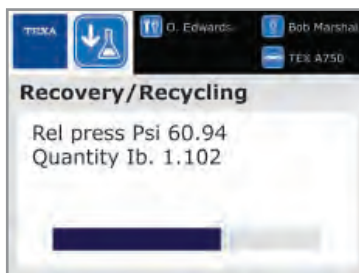
Service Report Easily Saved or Printed

KONFORT 750R

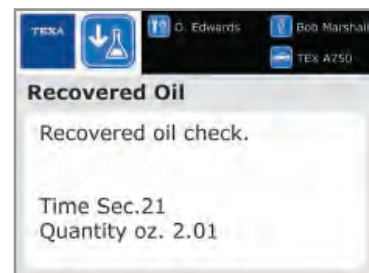
Automatic Procedures Help Service Sophisticated Vehicle Systems, Including Hybrid



Customize Recovery & Recharge



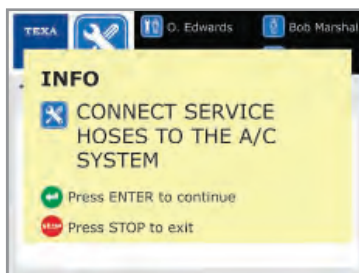
Display Recovery & Remaining



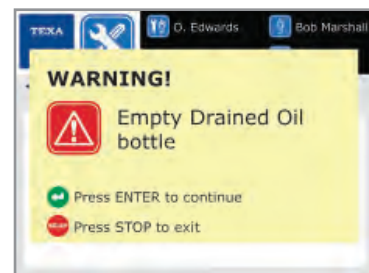
Highly Accurate Recovery Weight



Easy Select Complete AC Service



Clear Step By Step Messages



Easy Identify All Possible Errors

TEXA

FORMING GAS KIT & H2 DETECT

ACCURATE & EFFICIENT AC SYSTEM LEAK DETECTION

Confirm Micro Leaks In R134a / R1234yf / R744 (CO2) Refrigerant Systems

Charge any system type with the Forming Gas at the desired pressure.
Use the portable H2 Detect, to easily detect any hydrogen leak in the system.

FORMING GAS CART TTF 700



Equipped with all the necessary tools to operate on A/C systems

FORMING GAS CASE



Included with the Forming Gas cart TTF 700 as part of instrumentation

H2 DETECT SNIFFER



Detects any hydrogen in the air with precision, allowing you to detect the leak location.



Meets Daimler AG's requirements for gas detectors because Forming Gas is an non-polluting and readily available gas mixture that consists of 95% nitrogen and 5% hydrogen.



H2



R134a



R1234yf

Hydrogen (H2) molecular size is much smaller than other refrigerant gas, so micro leaks can easily be detected. Hydrogen is present in the air in small quantities to be easily detected by a sniffer.

Most AC service can be resolved with a refrigerant recharge. But to safely diagnose the AC systems without overlooking the problem, efficient leak detection is a responsible decision and with collision repairs it is required. An AC system missing the confirmed quantity is a sign of a leak and repair is needed.

- Pure nitrogen may signal multiple leaks, but does not detect precise location.
- UV tracer doesn't provide immediate detection and requires later system flush.

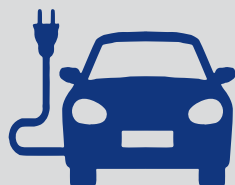


VEHICLE DIAGNOSTICS

ADVANCED COVERAGE & REPAIR SOLUTIONS



EV



HYBRID



CAR

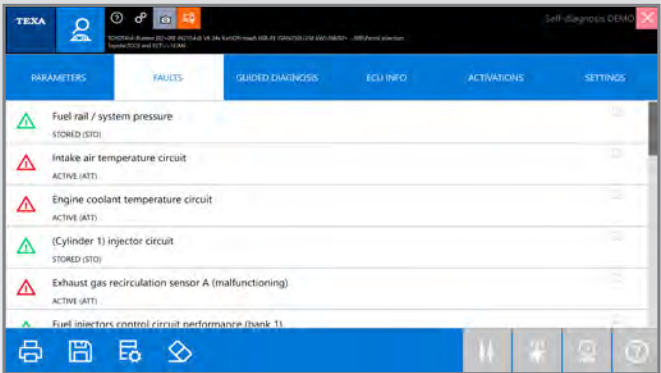


LIGHT TRUCK

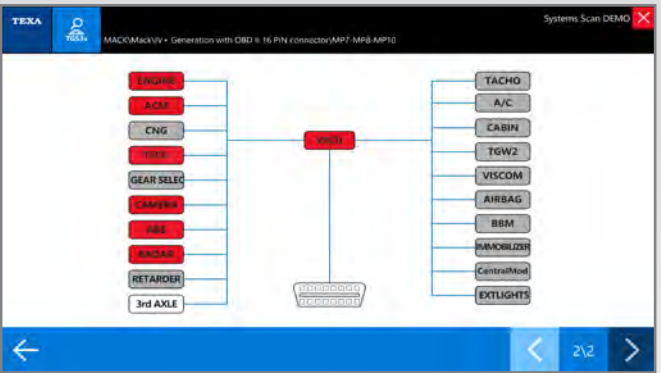


ADVANCED DIAGNOSTICS

OE LEVEL VEHICLE COVERAGE + SUPERCAR
COVERAGE ON MORE THAN 50 MANUFACTURERS - MORE THAN 900 MODEL SELECTIONS



Detailed Vehicle Module List / System Faults



Global Scan / Topology Module Map

MOTOR TRUSPEED

- FREE Access CAR Repair Data
- Code Linked TSBs & Repair Info
- Component Replacement Guides

- Data Graph Live Parameters
- Guided Maintenance Resets
- Maintenance Schedules & Data
- Adaptive Diagnostic Reports

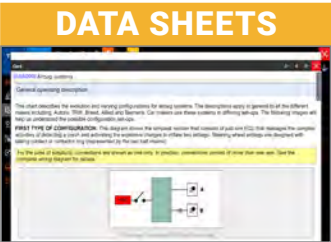
TEXPACK

SOFTWARE UPDATES - VEHICLE COVERAGE + ADVANCED FEATURES

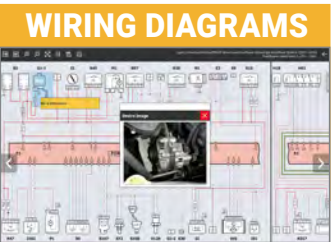
1YR
SUBSCRIPTION
SOFTWARE



REGULARLY DOWNLOAD
SOFTWARE TO PROVIDE
THE LATEST UPDATES
FOR DIAGNOSTIC
FEATURES AND
VEHICLE COVERAGE



Accurate Select
Vehicle Info and
Instruction Include
Performing
Manual Service
Resets, Overviews
of Mecatronic
Systems and More



The Animated
Graphics Create
An Interactive
Map With The
Flow Of Input
and Output
Signals To / From
The Control Units



Visual Live Data
Representation
and Parameters
for Many Vehicle
Systems Including
Engine, ABS,
Transmission,
and Many More



Advanced Resets,
Component and
System Coding,
Bi-Directional
Functions,
Advanced Testing
Include Fuel Pump
/ Cylinder Cut-Off
and Many More

WARRANTY EXTENSION

- Warranty valid for TEHA hardware packages of tablet + VCI (not PC based) Axone Light, Plus, Voice / TXT Multihub, TXBe, TXB2
- TEHA hardware warranty extension will be active as long as TEXPACK subscription renewal activations are uninterrupted
- 30 day grace period for warranty extension based on TEXPACK activation date (no warranty past 30 day TEXPACK expiration)
- Does not cover accidental damages or damage resulting from lack of maintenance, use or abuse by customer
- Does not cover limited performance by hardware and software obsolescence (Windows OS or Diagnostic Protocols)

eAI Diagnostics 810A-65 Cedar
Pointe Dr Suite 277, Barrie, ON,
L4N9R3

INCLUDED WITH PACKAGE



SECURE CASE



AXONE
NEMO LIGHT



CAR
SOFTWARE



NANO S 2



1YR TEXPACK
SUBSCRIPTION



INCLUDED WITH PACKAGE



SECURE CASE



AXONE
NEMO PLUS



CAR
SOFTWARE



MULTIHUB



1YR TEXPACK
SUBSCRIPTION



INCLUDED WITH PACKAGE



SECURE CASE



AXONE
VOICE



CAR
SOFTWARE



SUPERCAR
SOFTWARE




MULTIHUB



1YR TEXPACK
SUBSCRIPTION



FREE ACCESS **MOTOR** TRUSPEED
OEM SOURCED REPAIR DATA

SOFTWARE UPDATES	TECHNICAL SOFTWARE
 TEXPACK MARINE AGA00M \$450 INCLUDES: - 1 YR UPDATES - 1 YR EXTENDED WARRANTY	 TEX@INFO MARINE TIM07 \$300 INCLUDES: - 1 YR UPDATES - TEXA TROUBLESHOOTING

	NEMO LIGHT	NEMO PLUS	AXONE VOICE
SCREEN	10.1"	11.6"	13.3"
PROCESSOR	INTEL N100 CPU	INTEL N100 CPU	INTEL CORE I5
MEMORY	250 GB SSD	250 GB SSD	512 GB SSD
ENVIRONMENTS	2 MAXIMUM	3 MAXIMUM	ALL
ACC. PORTS	1 - USB	2 - USB	4 - USB
BLUETOOTH	5.2 DUAL BAND	5.3 DUAL BAND	5.1 DUAL BAND
BATTERY	6000 MAH	6990 MAH	12,500 MAH

CAR COVERAGE - ALL MAJOR MAKES

PASSENGER CAR

ACURA
AUDI
BMW
BUIC
CADILLAC
CHEVROLET
CHRYSLER
DODGE

FIAT
FORD
GENESIS
GMC
HONDA
HUMMER
HYUNDAI
INFINITI
JAGUAR
JEEP

KIA
LAND ROVER
LEXUS
LINCOLN
MAZDA
MERCEDES BENZ
MERCURY
MINI
MITSUBISHI
NISSAN

POLESTAR
PORSCH
SUBARU
SUZUKI
TESLA
TOYOTA
VOLKSWAGEN
VOLVO
and more....

LIGHT COMMERCIAL

CHEVROLET
DODGE
FORD
FREIGHTLINER
GMC
MERCEDES BENZ
NISSAN

TEXA
NAVIGATOR
NANOS2



+ SUPERCARS

COMPACT & LIGHT

Repair Shop Mechanic Focus



Optimize Data Download
RGB Confirmation LED

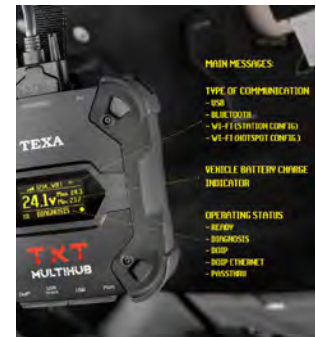
TXT
MULTIHUB



+ SUPERCARS

MORE PROTOCOLS

RP1210, CanFD, DoIP, K-L,
J2534, J1708, J1850, J1939
Ethernet, WiFi, Bluetooth, USB



Backlit Display &
Voltage Confirmation

AUTHENTICATION

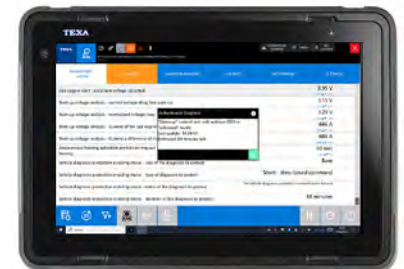
Easily remember and manage credentials required to access manufacturers' portals.

AUTOAUTH[®]
AUTO AUTHENTICATION AUTHORITY

SECURE GATEWAY ACCESS

Chrysler and Fiat Vehicles

VCUs On VW Group Vehicles



PRE/POST SCAN REPORTS

Diagnostic Report PDF file easily printed or saved to shop system

1 Confirm Vehicle System Data



2 Global System Scan All DTCs



3 Create Vehicle System Report



support@texa.ca

www.texa.ca

MADE IN ITALY / OEM PARTNER

eAl Diagnostics 810A-65 Cedar
Pointe Dr Suite 277, Barrie, ON,
L4N9R3

TEXA

PROFESSIONAL LEVEL DIESEL DIAGNOSTICS

Multi-Brand & Multi-Environment Advanced Coverage



Diagnostics & Protocols
for Medium Duty &
Heavy Duty Vehicles

TEXA
AXONE
VOICE

Voice & Facial Recognition

TEXA
TXT
MULTIHUB

Multi-Environment Vehicle Connection



13" Gorilla Glass Screen
Magnesium Internal Casing
512gb SSD HD - 16gb RAM
Dual Band WiFi - Bluetooth 5.1



American Truck
"Type II" Cable



Backlit Display,
RP1210, CanFD,
DoIP, K-L,
J2534, J1708,
J1850, J1939
Ethernet, WiFi,
Bluetooth, USB

ROAD TRI▲**GE SERVICE**

eTRUCK



Easily Force DPF Regens
From Remote Locations

TEXPACK

ADVANCED DIAGNOSTIC FEATURES + OE LEVEL VEHICLE COVERAGE

**1YR
SUBSCRIPTION**



SOFTWARE

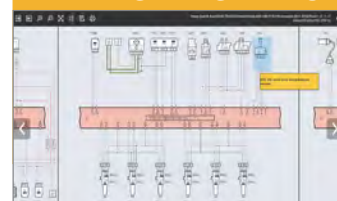
STAY CURRENT WITH
REGULARLY DOWNLOADED
SOFTWARE UPDATES
TO PROVIDE THE LATEST
DIAGNOSTIC FEATURES
AND VEHICLE COVERAGE

DATA SHEETS



Accurate Select
Vehicle Info and
Instruction Include
Performing
Manual Service
Resets, Overviews
of Mechatronic
Systems and More

WIRING DIAGRAMS



The Animated
Graphics Create
An Interactive
Map With The
Flow Of Input
and Output
Signals To / From
The Control Units

DASHBOARDS



Visual Live Data
Representation
and Parameters
for Many Vehicle
Systems Including
Engine, ABS,
Transmission,
Diesel Exhaust,
or Many More

ACTIVATIONS



Advanced Resets,
Component and
System Coding,
Bi-Directional
Functions,
Advanced Testing
Include Fuel Pump
/ Cylinder Cut-Off
and Many More

ADVANCED DIAGNOSTICS

PROTOCOLS & FEATURES HEAVY DUTY VEHICLE COVERAGE

- Interactive Maintenance Guides
- Visual Live Data Dashboards & Recorded Drive Tests
- Component Reset & Replacement Guides
- Technical Information & Bulletins
- System Diagnostic Reports
- Precise ADAS Calibration

COMPATIBILITY

Designed to function with IDC5 installed on TEXA AXONE, or any Windows based laptop.



VEHICLE COVERAGE - ALL MAJOR MAKES

AMERICAN HD & BUS

ALEXANDER DENNIS
ALLEGRO
BLUE BIRD
CATERPILLAR
CHEVROLET
E-ONE
FODEN
FREIGHTLINER
INTERNATIONAL
IRIZAR - Integral
IVECO
KENWORTH
MACK
MCI
PETERBILT
STERLING
TEMSA
VAN HOOL

VOLVO BUS

VOLVO TRUCKS
WESTERN STAR

AMERICAN MD

CHEVROLET
DODGE
FORD
GMC
HINO
INTERNATIONAL
ISUZU (North America)
KENWORTH
MITSUBISHI FUSO
PETERBILT
STERLING
UD TRUCKS (NISSAN
DIESEL)

POWERTRAIN

ALLISON
BENDIX
CATERPILLAR
CUMMINS
DETROIT - MBE
DEUTZ
EATON
INTERNATIONAL
MERCEDES BENZ
MTU
MWM
PACCAR
SCANIA
VOITH
VOLVO PENTA
WABCO
ZF

LIGHT COMMERCIAL VEHICLE

DODGE
FORD
FREIGHTLINER
MERCEDES-BENZ
NISSAN

TRAILER

THERMO KING
BENDIX
CARRIER TRANSICOLD
HALDEX
MERITOR - WABCO
WABASH

eAI Diagnostics 810A-65 Cedar
Pointe Dr Suite 277, Barrie, ON,
L4N9R3



ROAD TRI△**GE**

Easily Force DPF Regens From Remote Locations

support@texa.ca

www.texa.ca

MADE IN ITALY / OEM PARTNER

TEXA

OFF HIGHWAY VEHICLE DIAGNOSTIC LEADER

Multi-Brand & Multi-Environment Advanced Coverage



Diagnostics & Protocols for
Agricultural, Construction,
Cranes & Industrial Vehicles

TEXA
AXONE
VOICE
Voice & Facial Recognition

TEXA
TXT
MULTIHUB
Multi-Environment Vehicle Connection



13" Gorilla Glass Screen
Magnesium Internal Casing
512gb SSD HD - 16gb RAM
Dual Band WiFi - Bluetooth 5.1



Backlit Display,
RP1210, CanFD,
DoIP, K-L,
J2534, J1708,
J1850, J1939
Ethernet, WiFi,
Bluetooth, USB

OHW ESSENTIAL Cable Case

- OBD Deutsch 9-Pin
- 12-Pin Deutz Cable
- 9-Pin and 14-Pin Caterpillar
- Kubota, Komatsu and more...



TEXPACK

ADVANCED DIAGNOSTIC FEATURES + OE LEVEL VEHICLE COVERAGE

1YR
SUBSCRIPTION



SOFTWARE

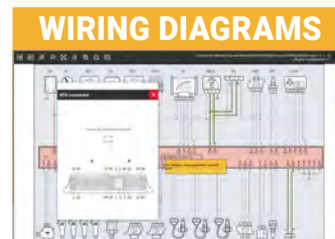
STAY CURRENT WITH
REGULARLY DOWNLOADED
SOFTWARE UPDATES
TO PROVIDE THE LATEST
DIAGNOSTIC FEATURES
AND VEHICLE COVERAGE

DATA SHEETS



Accurate Select
Vehicle Info and
Instruction Include
Performing
Manual Service
Resets, Overviews
of Mechatronic
Systems and More

WIRING DIAGRAMS



The Animated
Graphics Create
An Interactive
Map With The
Flow Of Input
and Output
Signals To / From
The Control Units

DASHBOARDS



Visual Live Data
Representation
and Parameters
for Many Vehicle
Systems Including
Engine, ABS,
Transmission,
Diesel Exhaust,
or Many More

ACTIVATIONS



Advanced Resets,
Component and
System Coding,
Bi-Directional
Functions,
Advanced Testing
Include Fuel Pump
/ Cylinder Cut-Off
and Many More

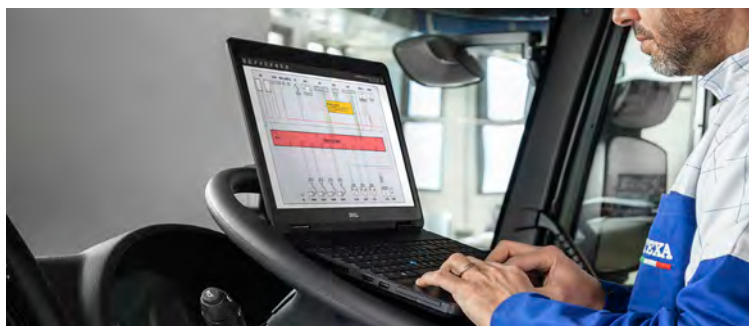
ADVANCED DIAGNOSTICS

PROTOCOLS & FEATURES OFF HIGHWAY VEHICLE COVERAGE

- Detailed Interactive Maintenance Guides
- Special Functions & Visual Live Data Dashboards
- Component Locations & Replacement Guides
- Interactive System Scan & Diagnostic Reports

COMPATIBILITY

Designed to function with IDC5 installed on TEXA AXONE, or any Windows based laptop.



VEHICLE COVERAGE - ALL MAJOR MAKES

AGRICULTURAL

AGRICULTURAL TRAILER
BELARUS
BUHLER VERSATILE
CARRARO
CASE IH
CATERPILLAR
CHALLENGER
CLASS
DEUTZ - FAHR
DIECI
ENERGREEN
FARESIN
FENDT
FRANZ KLEINE
GRIMME
HURLIMANN
JCB
JOHN DEERE
KAMAZ
KRONE

KUBOTA
LAMBORGHINI
LANDINI
LAVERDA
LINDNER
MAC DON
MANITOU
MASSEY FERGUSON
McCORMICK
MERLO
NEW HOLLAND
RENAULT AGRI
ROPA
SAME
STEYR
URSUS
VALPADANA
VALTRA

CONSTRUCTION

AEBI
ASTRA

ATLAS COPCO
BELL
BOBCAT
BOMAG
CARRARO
CASE CE
CATERPILLAR
DOOSAN
FIAT-KOBELCO
GDELS MOWAG
HAMM
HITACHI
HYUNDAI CE
JCB
JOHN DEERE CE
KASSBOHRER
GELANDEFAHRZEUG
KOBELCO
KOMATSU
KRAMER
KUBOTA
LIEBHERR

LINK-BELT
MERLO
NEW HOLLAND
O&K
OSHKOSH
PERLINI
PETTIBONE
PRINOTH
RANDON
SANDVIK
SUNWARD
TAKEUCHI
TEREX
TEREX TRUCKS
TIGERCAT
VERMEER
VOLVO CE
WACKER NEUSON
WEBASTO
XTREME
YANMAR

CRANE TRUCK / CONTAINER TRUCK

COMETTO
CVS FERRARI
FANTUZZI
GENIE
GROVE
HYSTER
HYUNDAI
JLG
KALMAR
LIEBHERR
LINDE
MANITOU
OTO
SKYJAK
TADANO
TERBERG
TEREX / DEMAG

INDUST. ENGINE

ALLISON

CATERPILLAR
CUMMINS
DETROIT
DEUTZ
EBERSPÄCHER
FPT (IVECO MOTORS)
HINO
ISUZU
IVECO
JOHN DEERE
KOHLER
KUBOTA
MERCEDES-BENZ
MTU
MWM
PERKINS
SCANIA
SISU
SULLAIR
VM MOTORI
VOLVO PENTA
YANMAR

eAI Diagnostics 810A-65 Cedar
Pointe Dr Suite 277, Barrie, ON,
L4N9R3



ROAD TRIΔ**GE**

Easily Force DPF Regens From Remote Locations

support@texa.ca

www.texa.ca



TEXA USA
TECH SUPPORT
855-200-8392

MADE IN ITALY / OEM PARTNER

POWERSPORTS

TEXA Diagnostic solutions



Diagnostic solutions since 1992.
And for as long as there are powersports professionals.

eAI Diagnostics 810A-65 Cedar
Pointe Dr Suite 277, Barrie, ON,
L4N9R3



Official
Supplier
2021

TEXA

Transforming data into solutions

The **IDC5 BIKE** software is **complete, practical** and **intuitive**, extremely easy to navigate and rapid in all diagnostic phases, from the error identification to its solution.

IDC5 BIKE is designed to assist technician through the whole repair process thanks to nominal values associated with the error, technical data sheets and interactive wiring diagrams containing more than 15 years of experience and thousands of successfully solved problems.



Special adjustments

The IDC5 software offers a wide range of special adjustments that go beyond the ordinary vehicle servicing, such as:

HARLEY-DAVIDSON

- Vehicle configuration change
- Idle reset
- Exhaust valve enabling

DUCATI

- Key adaptation
- Anti-theft enabling / disabling

BMW

- Odometer alignment
- Speed limiter unlock after running-in for S 1000 R (K47), S 1000 XR (K49) and S 1000 RR (K46)

BRP

- Key resets

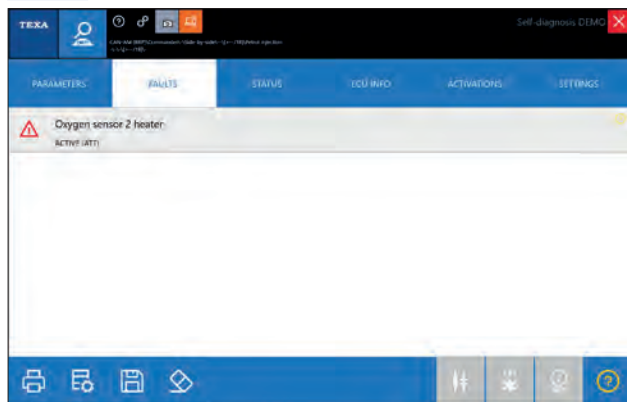
HONDA

- Engine ECU reset

SUZUKI

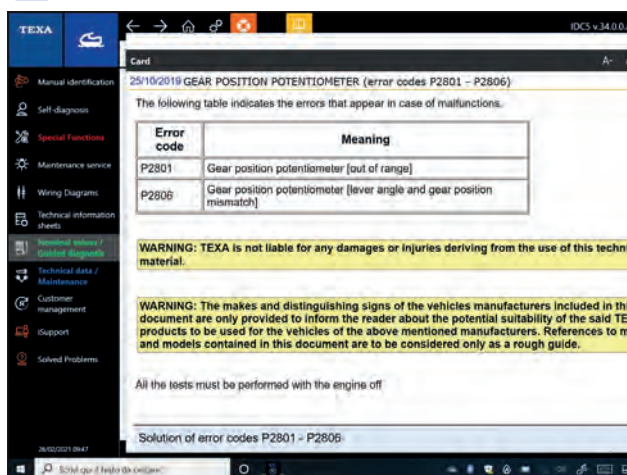
- CO adjustment

Faults



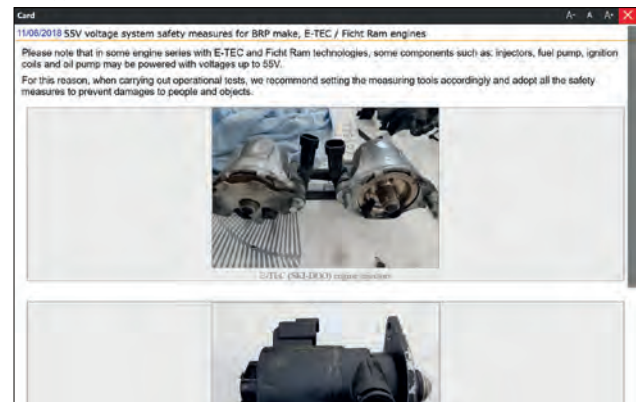
The Faults page instantly displays all the **errors in the vehicle**, with the related codes and descriptions.

Nominal values



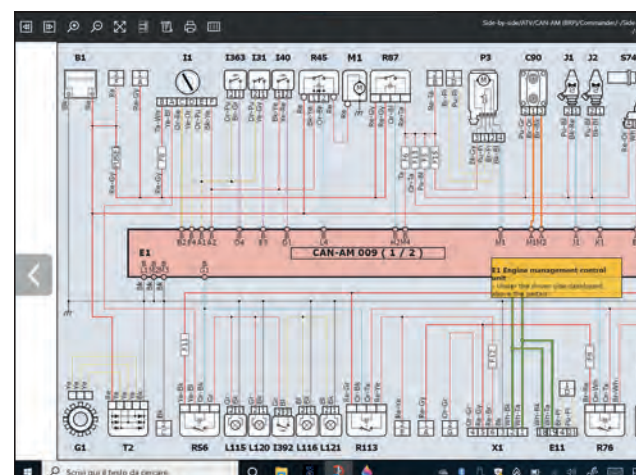
Nominal values provide a tree diagram to solve the specific error codes.

Data sheets

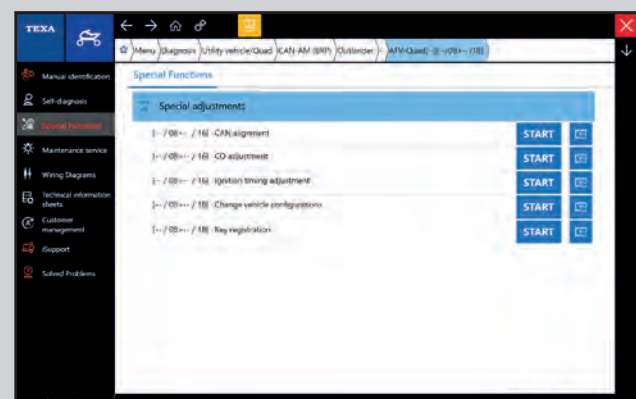
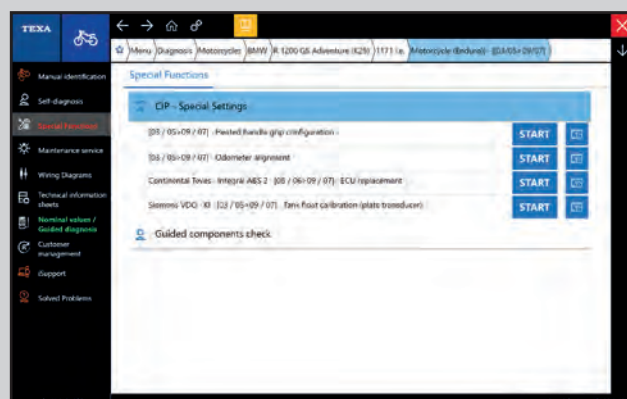


Very accurate **information on the selected vehicle**, including instructions for performing manual service resets, overviews of specific mechatronic systems and much more.

Interactive wiring diagrams



The **animated graphics** create an interactive map with the flow of input and output signals to/from the control units.



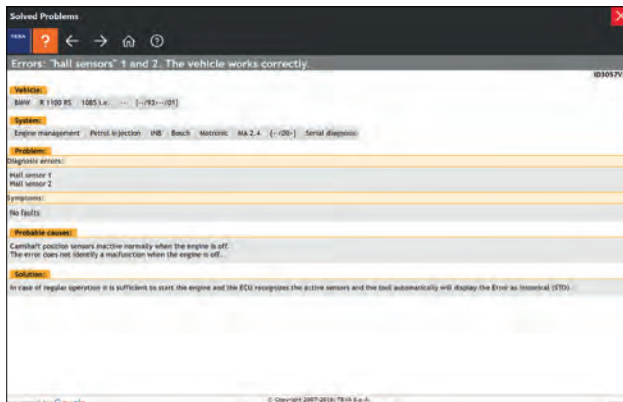
People and technology at your service

Purchasing a TEXA diagnostic solution allows you to access a **complete range of functions and services** that are essential for the complex activity of vehicle repairing. TEXA is committed to provide its customer not only the best diagnostic software in the market but also the best customer assistance and services.



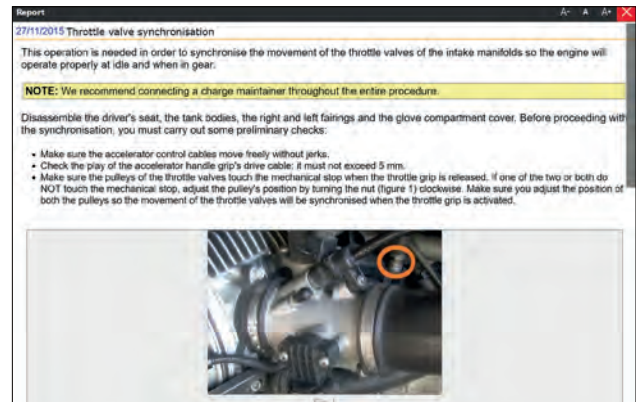
SOLVED PROBLEMS

This function allows the technician to search for **repair procedures** already encountered and registered by our international call centers.



TECHNICAL BULLETINS

The TEXA Technical Bulletins contain **information on frequent problems and repair procedures**, operating principles of a specific electronic-mechanical system, methods to rapidly find a solution to a problem and easy-to-interpret comparative tables and images.



SOFTWARE UPDATES

TEXA periodically releases major software updates and several smaller patches and continuous updates. The **subscription for the first year is included and the renewal is optional**, the technician can decide whether he wants to update his unit or not without losing software capabilities or incurring penalty fees.



iSUPPORT

A **customer support portal** where the technicians can interact with TEXA and receive assistance by qualified technicians.

This function allows the customer to send tickets and requests to TEXA's customer support center.

Check the service access modes and costs with your TEXA retailer.

UNBEATABLE COVERAGE

IDC5
COVERAGE
UPDATE

IDC5 BASIC

MOTORBIKES

BUELL
HARLEY-DAVIDSON
INDIAN
POLARIS
VICTORY

UTILITY

VEHICLES/QUAD

ARCTIC CAT
CAN-AM (BRP)
GEM
POLARIS
POLARIS DEFENCE
POLARIS RANGER
QUADIX
ROTAX (BRP)

SNOWMOBILES

ARCTIC CAT
LYNX (BRP)
POLARIS
SKI-DOO (BRP)

PERSONAL

WATERCRAFT

SEA-DOO (BRP)

IDC5 PREMIUM

MOTORBIKES

ADIVA
AEON
AJP
APRILIA
BETA
BENELLI
BENELLI (DSK)
BIMOTA
BMW
BOOM TRIKE BUELL
CAGIVA
CAN-AM (BRP)
CFMOTO
CSC MOTORCYCLES
DAELIM MOTOR
DAFRA
DERBI
DUCATI
FANTIC MOTOR
FB MONDIAL
GAS GAS
GENERIC
GEON
GG TECHNIK
GILERA
GOES
HARLEY-DAVIDSON

HISUN
HM
HONDA
HONDA MONTESA
HUSABERG
HUSQVARNA
HYOSUNG
INDIAN
KASINSKI
KAWASAKI
KEEWAY
KELLER
KTM
KYMCO
LAVERDA
MACBOR
MALAGUTI
MASH
MBK
MH
MINSK
MONDIAL
MOTO GUZZI
MOTO MORINI
MV AGUSTA
PEUGEOT
PIAGGIO
POLARIS
QUADRO

RIYA
ROYAL ENFIELD
SHERCO
SHINERAY
SINNIS
STELS
SUZUKI
SWM
SYM
TGB
TRIUMPH
URAL
VERVE MOTO
VESPA
VICTORY
VOXAN
YAMAHA
ZONGSHEN

UTILITY

VEHICLES/QUAD

ARCTIC CAT
CAN-AM (BRP) CFMO-
TO
COLEMAN
GAS GAS
GEM
GG TECHNIK
GRECAV

HISUN
HONDA
KAWASAKI
KWN MOTORS
PIAGGIO
POLARIS
POLARIS DEFENCE
POLARIS RANGER
ROSENBAUER
QUADIX
ROTAX (BRP)
STELS
SUZUKI
TGB
YAMAHA

SNOWMOBILES

ARCTIC CAT
LYNX (BRP)
POLARIS
SKI-DOO (BRP) STELS
YAMAHA

PERSONAL

WATERCRAFT

HONDA MARINE
KAWASAKI MARINE
SEA-DOO (BRP)
YAMAHA MARINE

eAI Diagnostics 810A-65 Cedar
Pointe Dr Suite 277, Barrie, ON,
L4N9R3

E: support@texa.ca W: www.texa.ca

TEXA

AFFORDABLE MARINE DIAGNOSTICS

OUTBOARD / INBOARD / PWCs / INDUSTRIAL

INTERACTIVE DATA
TECHNICAL SHEETS
REPAIR PROCEDURES



AXONE NEMO LIGHT

Windows based TEXA IDC5 diagnostic software operates on Axone tablet

TEXA TXB 2

Advanced protocols & coverage for Marine & Powersports

- Live Data, DTC Codes, Maintenance Resets
- Over 1500 Interactive Wiring Diagrams (patented)
- Technical Bulletins On Frequent Problems
- Nominal Values Provide DTC Tree Diagram

OE LEVEL COVERAGE

COVERAGE ON MORE THAN 50 MANUFACTURERS
MORE THAN 900 MODEL SELECTIONS

CATERPILLAR
CRUSADER
CUMMINS
VOLVO PENTA
KODIAK MARINE
MERCURY DIESEL
MARINE POWER
MERCURISER

MALIBU
SEA-DOO
ILMOR
EVINRUDE
HIDEA
JOHNSON
MARINER
MERCURY

NISSAN MARINE
SUZUKI MARINE
YAMAHA MARINE
HONDA MARINE
KAWASAKI MARINE
TOYOTA MARINE
FORD MARINE
YAMAHA MARINE

support@texa.ca

www.texa.ca

MADE IN ITALY / OEM PARTNER

eAI Diagnostics 810A-65 Cedar Pointe Dr Suite 277, Barrie, ON, L4N9R3

PROMOTIONS

*While stocks last, prices subject to change without notice.



FROM JULY 1st TO SEPTEMBER 30th, 2025

BUY ONE



MLW49-66-6804
27pc 1/2" drive MM&SAE
packout set

CALL

MLW49-66-6802
1/2DR 15pc SAE PO
IMP SCKT set

CALL

MLW49-66-6803
1/2DR 16pc MM PO
IMP SCKT set

CALL

GET* YOUR CHOICE



MLW48-22-9403P
10pc socket SET - SAE

Value of 44,45 \$



MLW48-22-9503P
10pc socket SET - METRIC

Value of 44,45 \$

M18 FUEL

FROM AUGUST 1st TO OCTOBER 31st, 2025

BUY

MLW3697-25
M18 FUEL
5pc combo kit

CALL



GET*

MLW48-11-1881P
M18 Forge XC8.0 Battery

Value of 348,45 \$



M12

FROM AUGUST 1st TO OCTOBER 29th, 2025

BUY

MLW2448-20
M12 cable stapler bare

CALL

GET*

MLW48-11-2420P
M12 CP2.0 battery

Value of 108,45 \$



TITAN SUPER STORE

PROFESSIONAL QUALITY TOOLS BUILT FOR LONG TERM PERFORMANCE AND DEPENDABILITY



21 Piece Jumbo 3/4 Dr. Socket Set

- Made with Carbon Steel
- Polished chrome plated finish
- Includes: 3/4 in. Dr. quick release ratchet, 4 and 8 in. extension bars, sliding T-handle, (16) sockets, blow mold case

TIT18188 - SAE \$256.95

- Sizes: 7/8, 15/16, 1, 1-1/16, 1-1/8, 1-3/16, 1-1/4, 1-5/16, 1-3/8, 1-7/16, 1-1/2, 1-5/8, 1-3/4, 1-13/16, 1-7/8 and 2 in

TIT18189 - Metric \$256.95

- Sizes: 7/8, 15/16, 1, 1-1/16, 1-1/8, 1-3/16, 1-1/4, 1-5/16, 1-3/8, 1-7/16, 1-1/2, 1-5/8, 1-3/4, 1-13/16, 1-7/8 and 2 in



TIT16069 \$30.45

38 Piece Precision Bit and Driver Set

- Set includes: (30) Precision bits (4x28mm): Slotted, Phillips, Pozi, Star, Hex, (7) Nut Driver Bits, (1) precision ratcheting screwdriver handle

TIT40000 \$101.45

8 Piece Impact Adapter Set

- Chrome-moly construction for durability
- Sizes: 1" F x 3/4" M, 3/4" F x 1/2" M, 1/2" F x 3/8" M, 3/8" F x 1/4" M, 1/4" F x 3/8" M, 3/8" F x 1/2" M, 1/2" F x 3/4" M, 3/4" F x 1" M



9 Piece Magnetic Nut Setter

- Made of forged heat-treated chrome vanadium steel
- 1/4 in. shank can be used with a wide variety of quick change chucks and drills

TIT16297 - Metric \$12.45

- Set contents: (9) 2 in. Nut Setter: 5, 5.5, 6, 7, 8, 9, 10, 11, and 12mm (1) Storage Rack

TIT16298 - SAE \$12.45

- Set contents: (9) 2 in. Nut Setter: 1/4, 5/16, 9/32, 11/32, 3/8, 7/16, 13/32, 1/2, and 15/32 in. (1) Storage Rack



TIT16298

Jumbo Combination Wrench Set

- Heat treated alloy steel construction
- Sizes engraved for easy identification
- Satin finish



TIT17289 \$214.45

7 Piece Metric Jumbo Combination Wrench

- Sizes: 34, 36, 38, 41, 42, 46, and 50mm

TIT17290 \$209.95

6 Piece SAE Jumbo Combination Wrench

- Sizes: 1-3/8", 1-1/2", 1-5/8", 1-3/4", 1-7/8" & 2"

TIT17716 \$15.45

6 Piece Non-Marring Pick, Hook, and Pry Set

- Glass reinforced nylon composite material
- Lightweight, non-conductive, non-corroding, and solvent resistant
- Double-ended design provides multiple tip options



TIT85504 \$37.95

3 Piece Precision Prybar Set

- Set includes: 4.5 and 8 mm curved; 7 mm spoon end curve and 4.5 mm hook; 7 mm angle and 4.5 mm extreme hook
- Anti-slip anodized aluminum knurled grip
- CNC finish Hot Forge blade tips



TIT51408 \$66.45

High Temp Infrared Thermometer

- Temp range: -58°F - 1202°F
- Weight 8.8 ounces

A/C TOOLS & EQUIPMENT

Leak Detection

TRACER PRODUCTS
THE MOST TRUSTED NAME IN AUTOMOTIVE LEAK DETECTION

LEAKFINDER®
AFTERMARKET LEAK DETECTION SOLUTIONS

TRALF016 \$385.45

BigEZ™ Universal A/C Leak Detection Kit

- 8 oz. (237 ml) Universal A/C Dye Cartridge
- LF500CS UV Lamp in a carrying case
- Caulking-gun style injector, R-134a hose/coupler and purge fitting

TRALF021 \$231.45

A/C and Fluid Leak Detection Kit

- Includes: (1) 1oz bottles of LeakFinder® Universal A/C, Fluid and Coolant Dyes. Includes (1) re-usable syringe, R-134a hose/coupler and purge fitting, LeakFinder® UV lamp and fluorescence-enhancing glasses in a carrying case

TRALF810 \$191.95

4 Piece LeakFinder™ Universal A/C Dye Injection Kit

- Includes Caulking gun-style dye injector assembly, BigEZ™ R-134a hose/coupler and purge fitting, and 8 oz (237 ml) BigEZ™ universal multi-dose A/C dye cartridge

TRACER PRODUCTS
THE MOST TRUSTED NAME IN AUTOMOTIVE LEAK DETECTION

TRATPOPUV20EV \$426.45

Mini-EZ™ POE-Based EV A/C Leak Detection Kit

- Maintains system resistivity with concentrated formula
- Manufactured with specialized OEM-grade compressor oil for EV
- Individually sealed in foil packaging to protect against moisture

Kit includes: 3 single-dose Mini-EZ™ dye cartridges, OPTI-PRO UV flashlight, EZ-Ject™ dye injector assembly, solid-brass swivel-type R-134a coupler, R-1234y coupler, for Hybrid/EV, GLO-AWAY™ Plus, and glasses and medium blue carrying case.

TRATPOPUV \$236.45

OPTI-PRO UV Plus Cordless, Violet LED Flashlight

- With lithium-ion battery, charger and TP-9940 glasses
- Focus and strobe feature

TRACER PRODUCTS
THE MOST TRUSTED NAME IN AUTOMOTIVE LEAK DETECTION

TRATP9367L \$1,020.45

Marksman II Ultrasonic Tool with Laser Pointer

- Convert and amplify inaudible ultrasonic sounds into audible "natural" sounds
- 5-LED signal intensity indicator and audible alarm
- Unique ultrasonic emitter helps locate faulty leaks in non-pressurized enclosures

TRALF400 \$91.45

Cordless Blue Light Led Leak Detection Flashlight

- Power comparable to high intensity 75-watt lamps

TRATP9793-BX \$287.95

EZ-Shot R-134A/PAG A/C Dye Injection Kit with TP9

- TP9760-8 BigEZ™ R-134a/PAG cartridge
- TP-9749 EZ-Shot™ caulking gun-style dye injector assembly
- TP-9793-BX 18" (46 cm) R-134a hose/coupler with check valve & purge fitting



TRATP9824-BX \$236.45

EZ-Ject R1234YF Dye Injection Kit

- OEM Approved
- Co-solvent free & certified to meet SAE J2297
- Kit includes: TP9825 EZ-Ject™ R-1234yf/PAG cartridge, TP-9845 EZ-Ject™ dye injector assembly, 128021 R-1234yf hose / coupler and purge fitting



TRATPOPUVMR \$304.45

OPTI-PRO™ UV MAX R Cordless, Rechargeable, Violet Light LED Flashlight with Lithium-Ion Battery, Charger and TP9940 Glasses

TRATPOPUV \$152.95

OPTI-PRO UV Cordless, Violet Light LED Flashlight

- Focus feature
- OPTI-PRO UV cordless, violet light LED flashlight with 3 AAA batteries and TP-9940 glasses



TRATPOPUV \$236.45

OPTI-PRO UV Plus Cordless, Violet LED Flashlight

- With lithium-ion battery, charger and TP-9940 glasses
- Focus and strobe feature



A/C TOOLS & EQUIPMENT

Leak Detection



Mastercool®
"World Class Quality"

MSC56200 \$369.95

Raptor Electronic Leak Detector with UV Blue Light

- Digital Signal Micro Processor
- Mute Function
- Reset Function
- Sensitivity Level Adjustment
- Variable Frequency Audible Alarm
- Packaged in a blow molded case with UV glasses, 2 "C" batteries and sensor tip
- Visual Leak Level Indicator
- Keypad Control
- Battery Test Function
- Ultra Bright UV/Blue LED Light



MSC56100 \$322.95

Raptor Refrigerant Electronic Leak Detector

- Digital micro processor
- Reset feature
- Visual leak indicator
- Keypad control
- Sensitivity level adjustment



KTOOL® XD

KTIXD6301 \$49.95

Rechargeable UV Pen Light

- 1 Watt UV, 365-370 nm for leak detection
- 350 MAH li-ion battery
- Direct micro USB recharge
- Run Time: 50 minutes. Charge Time: 45 minutes. Battery charging status indicator. 350 MAH Li-ion. Length: 4"
- Pocket clip



UView

UVU413065 \$136.95

Phazer™ Black (Rechargeable) True UV Light

- Lithium-ion battery provides 2 hours of power
- Includes charger and UV enhancing glasses



UVUEW42085 \$58.95

UV Pico 395nm Professional UV Leak Detection Pen Light

- Precise, True UV wavelength with a Power Rating of 150
- Fixed beam focus
- Water resistant
- Pocket clip included
- Requires 2 x AAA batteries (not included)



UVUEW50395 \$224.45

Rechargeable UView® Phazer™ NEO 395 UV Leak Detection Light

- High Output True UV LED light
- UV POWERATING 4849
- The UV dye shines brighter with the Phazer Neo than with any other light.
- Precise, true UV wavelength and bandwidth to optimize the fluorescence of UV dyes.



UVUEW40395 \$124.95

Rechargeable UView® Phazer™ BLACK 395 UV Leak Detection Light

- High Output True UV LED light
- UV POWERATING 4789
- Precise, true UV wavelength and bandwidth to optimize the fluorescence of UV dyes



Mastercool®
"World Class Quality"

MSC53351 \$121.95

Professional UV Leak Detection Kit

- Everything you need to start locating leaks sources with UV light technology
- Locate leak sources in A/C, automatic transmissions, power steering, fuel and cooling systems
- 12 Volt/50 watt UV leak detector light



Kit includes: 1 oz coolant dye, 1 oz oil/ATF/fuel dye, mini dye injector (10 applications of universal A/C dye) which is compatible with R134A and R12 systems, dye remover R12 adapter, UV enhancing safety glasses, A/C connection hose with R134A coupler and 12 service labels.



MSC43070 CALL

Dual Evap/High Pressure Diagnostic Smoke Machine w/ Truck Adapter Kit

- Compact, heavy-duty design for years of reliable service
- Multiple options for smoke injection includes built-in internal compressor, shop air and inert gases
- Quick smoke generation
- Built-in safety pressure relief valve
- Large easy to read pressure decay gauge 0-30 in. H2O (70 mbar) - EVAP
- Large easy to read pressure decay gauge 0-30 psi - HP/HD
- Easy to read and clean flow meter
- Non-toxic and non-corrosive smoke
- 10' 12V power cables with durable clamps

MOTORVAC®

MTT500-0100 CALL

Cool Smoke EVAP Leak Detection System

- Utilizes cold smoke technology
- Does not use a heat source to generate UV dye enhanced smoke
- Dual mode leak detection feature
- Tests for leaks with or without smoke at the push of a button
- Pressure and vacuum leak diagnostics



MTT400-1054 \$69.45

Cool Smoke Fluid (200 ML Refill)

- CoolSmoke Fluid with UV Dye pin-points leaks faster and more accurately than non-dye methods
- Designed for use with the MotorVac Cool Smoke System



A/C TOOLS & EQUIPMENT

AC Fittings



Manual Service Coupler for R134A

- Quick connect design has an integral safety sleeve which protects against injury and refrigerant loss if the coupler is disconnected under pressure

ROB18190A - Low Side \$90.95

ROB18191A - High Side \$90.95

ROB18192 - High and Low-side Manual Coupler \$190.45



ROB18124 \$222.45

Service Coupler Set

- High side (red) and low side (blue)
- To service 1234yf A/C systems
- One year warranty



ROB18122 \$128.45

Blue Low-Side Service Coupler

- To service 1234yf A/C systems
- 1 year warranty



ROB10102 \$63.45

Multi-Purpose Refrigerant Side Can Tap

- Hinged design means no inserts to lose
- Adapts to R12, R134a and their respective oil cans
- 1/4" flare and 1/2" ACME ports with anti-blow-back valves



ROB10328 \$25.95

Hose Extension Coupler - 1/2" Acme External x 14mm Internal

- Connect any number of hoses to get the extra length you need
- Most common couplers used in the agriculture, construction and logging industries
- Harden Steel with 2900 PSI Rating



Air Conditioning Products
Tools, Equipment & Refrigerant

FJC6072YF \$98.45

R-1234yf Manifold/Hose Adapter Assortment

- Common adapter fittings for hoses on R-1234yf manifold gauge sets

Kit Includes:

- (2) Part # 6826 (2) Part # 6827
- (2) Part # 6828 (2) Part # 6829
- (2) Part # 6821 (2) Part # 6822



FJC6842 \$39.45

Can Tap 3-Way

- Works with R1234YF, R134A and R12

FJC6820 \$168.95

R134a to R1234YF 6 Piece Conversion Kit with Manual Coupler

- 2 brass fittings (M12 x 1/4" SAE)
- 2 brass fittings (M12 x M14)



FJC6011 \$85.45

R134 Manual Coupler Set

- High side, low side
- 14mm x 1.5 hose connection



FJC6801 \$61.45

R1234YF Manual Coupler

- M12 Fitting



Mastercool[®] Inc.
"World Class Quality"

MSC83736-K \$149.45

Deluxe R1234A to R1234YF Conversion Kit

- Converts 134A gauge set to 1234yf
- High and low side manual 1234yf couplers
- 1/2" Acme M x 1/2" Acme F left hand thread adapter
- 2 - 12mm M x 14 mm F 1234yf adapters



R134A 14mm-F x 13mm Quick Manual Couplers

- Patented manual couplers adjust easily to R134a service ports with varying dimensions



MSC82934 - Low Side \$55.95

MSC82834 - High Side \$55.95

MSC85530 \$22.45

Refrigerant and Oil Charge Can Tap Valve 3-in-1 Tool

- Unique design will work on all R134A (2-7/8"), R12 (2-1/2") and oil charge (2") cans
- The outlet port offers a 1/2" ACME and 1/2" FL fitting with an internal check valve to prevent system backflow



Mastercool[®] Inc.
"World Class Quality"

MSC63736-K \$104.95

R134A to 1234YF Conversion Kit

- Convert R134A gauge set to R1234YF
- High and low side standard 1234YF couplers
- 1/2" Acme M x 1/2" Acme F tank adapter
- 2 12mm M x 14mm F 1234YF adapters



MSC67434-E (High Side) \$53.95

R1234YF High Side Red Quick Coupler

- Specially designed for vehicles that have minimal access to service ports.
- These couplers attach to your existing 1/4" hoses and effortlessly snap to R1234YF A/C service ports

MSC67534-E (Low Side) \$53.95

R1234YF Low Side Blue Quick Coupler

- Specially designed for vehicles that have minimal access to service ports.
- These couplers attach to your existing 1/4" hoses and effortlessly snap to R1234YF A/C service ports

MSC67736-K \$147.45

1/4" FL to R1234YF Conversion Kit

- Easily convert any standard 1/4" A/C hose to connect to standard R1234YF service ports

A/C TOOLS & EQUIPMENT

AC Dyes & Oils / Oil Injectors

LEAKFINDER® AFTERMARKET LEAK DETECTION SOLUTIONS

TRALF2008 \$57.45

8 oz. Bottle, Oil Dye

- Finds leaks in oil, fuel, ATF and power steering systems
- Services up to 8 vehicles
- Made in the USA



TRALF2001 \$46.95

1 oz. Bottle, Oil Dye, Set of 6

- Finds leaks in oil, fuel, ATF and power steering systems
- Single bottle services 1 vehicle
- Glows yellow/green; works with all leak detection flashlights



TRALF3001CS \$10.45

1 oz. Bottle, Engine Coolant Dye

- Works with all leak detection flashlights
- Finds leaks in radiators, hoses, heater cores, water pumps & fittings



TRALF200CS \$29.45

Non-Hardening, Non Polymer A/C Leak Sealant use on R134A or R1234YF A/C systems



TRACER PRODUCTS THE MOST TRUSTED NAME IN AUTOMOTIVE LEAK DETECTION

TRATP9814EV-BX \$297.45

Mini-Ez™ Poe-Based Ev A/C Dye Injection Kit

- Specially formulated with high-dielectric properties to protect all hybrid/EV system components - including electrically driven compressors

Kit includes solid-brass swivel-type R-134a coupler, and R-1234yf adapter. It's the fast and economical way to add leak detection dye to an electric vehicle's A/C system



TRATP9812-BX \$326.45

Mini-Ez Hybrid Vehicle A/C Dye Injection Kit

- Includes TP9811-P3 dye cartridge with R-1234yf adapter
- Services R-1234yf & R-134a
- Includes TRATP9845 EZ-Ject dye injector assembly
- Includes TRATP9831CS R1234yf adapter
- Includes TRATP9813 solid brass, swivel type R134a hybrid coupler with check valve and purge fittings



TRATP9811-P3 \$86.95

Mini-EZ Hybrid Vehicle A/C Dye 3-Pack

- 0.25 oz (7 ml)
- Glows Green
- OEM-Grade
- Services up to 3 vehicles



TRACER PRODUCTS THE MOST TRUSTED NAME IN AUTOMOTIVE LEAK DETECTION

TRATP30900601 \$43.45

1 oz Gas Engine Oil Dye (6 Pack)

- High quality at an affordable price
- Expertly made from premium materials
- (6) 1-oz bottles gasoline engine oil dye



TRATP3400-1P6 \$47.95

1 oz (30 ml) UV Florescent Dye, Bottles (6 Pack)

- Services up to 6 vehicles



TRATP9770-8 \$84.45

8 oz. Universal Dye Cartridge

- 8 oz (237 ml) universal/ester BigEZ™ dye cartridge
- Services up to 64 vehicles
- Fits caulk-gun injector



TRALF1008 \$61.95

8 oz. Bottle, Universal A/C Dye

- Find leaks in A/C systems
- Compatible with all refrigerants
- Will glow green when used with A/C leak detection flashlights
- Services up to 32 vehicles



TRALF1800 \$73.95

8 oz. (237 ml) Universal BigEZ™ A/C Dye Cartridge

- 8 oz (237 ml) replacement dye cartridge



TRALF1800CS \$73.45

8 oz. (237 ml) Universal BigEZ A/C Dye

- Packaged in a clamshell
- Compatible with R-134a, R-1234yf, and other Refrigerants
- Services up to 32 Vehicles



Mastercool® "World Class Quality"

MSC53223-YF \$122.95

Cartridge Type R1234yf Universal Dye Injector

- Illuminates leaks through the use of high quality universal fluorescent dye
- Safe on hybrid and electric compressors
- Low side R1234yf Conversion Coupler (1/4" FL-M x 14 mm)



MSC53123-YF \$205.95

1234yf Oil/Dye Injector

- Heavy duty aluminum construction
- 1/10, 1/4 oz and mm injection markings
- Manual coupler



MSC53518-UV \$141.45

Rechargeable True UV Flashlight

- Rechargeable and AAA battery power source
- Telescoping true UV light
- Packaged with quick recharge adapter
- Dye enhancing UV glasses



MSC53010-AUT \$342.95

Nitrogen Leak Test Kit

- Nitrogen pressure regulator leak test kit
- T-handle for ease of pressure adjustment
- Includes leak testing gauges and hoses
- HP gauge 4400 psi



A/C TOOLS & EQUIPMENT

AC Dyes & Oils / Oil Injectors



UVU483208 \$62.45

Multi-Purpose Dye - 8 oz. Bottle

- 8 oz (240 ml) bottle, (8 applications) with precise measuring device built-in
- Works with most UV lights
- Reduces inventory as one dye covers a wide range of applications

UVU499108A \$79.45

A/C ExtenDye™

- Superconcentrated dye detects leaks in the vehicle A/C system
- Contains friction modifier to increase lubricity

UVU488046YF \$32.45

High Quality A/C Oil Compressor Lubricant

\$60.95



UVU399020A \$11.95

Spotgun Jr. A/C ExtenDye™ Cartridges (1 oz.)

- Concentrated dye detects leaks quickly
- ExtenDye additive package
- Friction modifier increases lubricity
- Anti-wear additive reduces friction

UVU399046YF \$11.95

PAG 46 Cartridge - 1 oz. PAG 46 Oil Cartridge 1234YF - 1 oz.



UVU560500 \$17.45

Combustion Leak Check Test Fluid - 16 oz. Bottle

- Tester fluid changes color when a leak is present
- Gasoline engine: tester fluid changes from blue to yellow
- Diesel engine: tester fluid changes from blue to green

UVU488046P \$22.95

46 Viscosity PAG Oil, 8 oz. Cartridge

- 46 Viscosity PAG Oil for R134a Systems
- Eliminates contaminants from entering the system
- Simply inject the amount of oil you want to add from the convenient 8 oz. oil cartridge
- From the recognized leader in UV leak detection



UVU488046YFPD \$48.95

Universal PAG 46 A/C Oil with Extendye 8 oz. bottle

- Compatibility with R-134A and R-1234YF systems



UVU471500A \$146.45

Spotgun™ Injection System with ExtenDye™ (8 oz.)

- Spotgun injector with R-12 and R-134a adapters
- A/C ExtenDye cartridge (8 oz/240 mL)
- Service stickers
- Hybrid safe*
- Lifetime warranty on every injection gun



ROB18460 \$293.95

1234YF Oil Injector

- Syringe-type low side oil injector
- Designed for charged systems



ROB16256 \$214.45

R-134a Oil Injector, 1/2" Acme Quick Coupler

- Can also be used for fluorescent dyes
- Measurements are marked on the barrel body
- Press the plunger to deliver the oil charge



ROB18480 \$220.45

PAG Oil Injector

- R134A Oil Injector • One year warranty
- Labeled for R134A PAG Oil • Made in USA



ROB18465 \$293.95

R1234YF PAG Oil Labeled Syringe-Type Injector

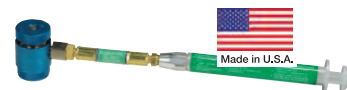
- Enables the user to inject PAG type A/C system lubricant back into the vehicle's A/C system



ROB18470 \$293.95

1234YF POE Oil Injector

- Labeled for POE ND11 oil
- Inject specified 1234YF oil under pressure



Air Conditioning Products
Tools, Equipment & Refrigerant

FJC2732 \$146.45

A/C Oil and Dye Injector R12 and R134A 2 oz.

- Hand turn • 2 oz refillable injector
- Add oil or UV dye without adding refrigerant



FJC2739 \$93.95

R1234YF Oil Injector

- Use Injector to add 2 oz of R1234YF oil to an R1234YF air conditioning system under pressure or during service
- Fitting sizes: 1/4" SAE female RH thread x 1/4" SAE male RH thread



FJC2724 \$162.95

Oil/Dye Injector R-1234yf

- 2 oz refillable with oil or dye
- Use without adding refrigerant to a system



FJC2480 \$49.95

PAG Oil with Fluorescent Leak Detection Dye - Quart

- Compatible with R134a and R12
- Compatible with mineral, ester, paraffin and PAG oil



FJC2484 \$12.45

PAG Oil 46 - 8 Ounce



FJC2501 \$120.95

PAG Oil 46 w/Dye - Gallon

FJC2494 \$38.45

PAG 46 Oil with Fluorescent Leak Detection Dye, Quart

- For use with R134a only



FJC2459 \$101.95

R1234YF Refrigerant Oil - 1 Quart

- This oil is needed for systems using R1234YF Refrigerant
- ZEROL® HD46 • ISO 46 grade

FJC2490 \$13.45

PAG Oil 150 Viscosity, 8 oz.

- As recommended by OE and compressor manufacturers
- For use with R134a only
- OEM Performance for your A/C Compressor & System

LIFT YOUR PRODUCTIVITY TO NEW HEIGHTS!

CHOOSE THE ATLAS®

WIRELESS MOBILE COLUMN LIFTS



INVEST

IN CUTTING-EDGE TECHNOLOGY

PRODUCTIVITY-BOOSTING

EFFICIENT

SAFE

Experience the freedom and flexibility of wireless lifts, leaving wired limitations behind.

GET VEHICLES REPAIRED QUICKER AND BACK ON THE ROAD!

HEAVY-DUTY

Ideal for commercial, public and farms.

TIME-SAVING

Designed to boost productivity.

PORTABLE

Easy maneuvering with spring-assisted handles.

FLEXIBLE

Lifts up to 19,000 lbs. with 10 columns configuration.

HIGH CAPACITY

Lift up to 76,000 lbs with 4 columns.

LONG BATTERY LIFE

25 lifts per charge, 85-second lift time.

DURABLE

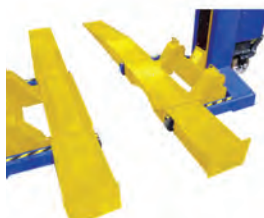
Lifetime bearings, premium batteries, Bosch components.

USER-FRIENDLY

LCD touchscreen for diagnostics and lift info.

SAFETY

Mechanical locks, hydraulic flow restrictor, two-speed lowering, automatic levelling and audible alarm.



EXPAND FUNCTIONALITY

Combined with purpose-built accessories, deliver a complete lifting solution for heavy-duty automotive shops

A/C TOOLS & EQUIPMENT

Evaporative Coolers

PORTACOOOL™

WHEN COMFORT COUNTS™



Portacool Apex

- Maximum cooling without sacrificing space. Slimmer profile and new front Intake. Place against any wall.
- Powered by Portacool CoolSync™. Complete digital display with Wi-Fi capability.
- Fan outlet directs the airflow with digital motors, enabling customized cooling zones at the touch of a button.
- Redesigned motor reduces noise creating a tranquil environment while cooling.
- Ensures worry-free operation with water level indicators, automatic shut-off and alerts.
- Roto-molded housings sets durability standards, guarding against harsh conditions and extending the cooler's lifespan.
- Built-in handle and lightweight housing ensure easy transportation with a tilt and pull over any terrain.
- Swiftly refill the tank via a convenient hatch, enabling seamless hose connections for uninterrupted cooling.
- Portacool's proprietary advanced media technology delivers superior cooling, conserves water, and reduces costs.
- 8-inch media with Edgecoat adds unmatched performance and durability.
- Portacool's APEX advanced system evenly distributes water, ensuring superior coverage and an enhanced cooling experience.

PORPACA07001A1



PORPACA05001A1 CALL Portacool Apex 500

- Cool 500 sq. ft. in a flash!
- High-velocity cooler delivers a refreshing breeze up to 55 feet away
- 13 gallon water reservoir

PORPACA20001A1



PORPACA12001A1 CALL Portacool Apex 1200

- Uses a redesigned 19 inch fan assembly to cool up to 1200 sq. ft.
- High-velocity cooler delivers a refreshing breeze up to 40 feet away
- 40 gallon water reservoir

PORPACA65001A1



PORPACA40001A1 CALL Portacool Apex 4000

- Uses a redesigned 36 inch fan assembly to cool up to 4000 sq. ft.
- High-velocity cooler delivers a refreshing breeze up to 50 feet away
- 55 gallon water reservoir

PORPACA07001A1 CALL Portacool Apex 700

- Cool 700 sq. ft. in a flash!
- High-velocity cooler delivers a refreshing breeze up to 60 feet away
- 22 gallon water reservoir

PORPACA20001A1 CALL Portacool Apex 2000

- Uses a redesigned 24 inch fan assembly to cool up to 2000 sq. ft.
- High-velocity cooler delivers a refreshing breeze up to 60 feet away
- 45 gallon water reservoir

PORPACA65001A1 CALL Portacool Apex 6500

- Uses a redesigned 48 inch fan assembly to cool up to 6500 sq. ft.
- High-velocity cooler delivers a refreshing breeze up to 40 feet away
- 66 gallon water reservoir

A/C TOOLS & EQUIPMENT

Evaporative Coolers



HESMC92V-FPD CALL Evaporative Cooler 11000 CFM

- Cooling area is 3000 SQ FT
- Air flow 11,000 cfm
- Air swing delivery system provides maximum coverage
- 3 - sided pad intake area allows for maximum cooling
- 3/4 HP, 5.8 Amps, 115 Volts



HESMC37V \$737.95 Evaporative Cooler 3100 CFM

- Cooling area 950 SQ FT
- 3100 CFM air flow
- Air swing delivery system provides maximum coverage
- 3-sided pad intake area allows for maximum cooling
- 1/5 HP, 2.4 AMPS, 115 VOLTS



HESMC61V CALL Evaporative Cooler 5300 CFM

- Cooling area 1600 SQ FT
- 5300 CFM air flow
- Air swing delivery system provides maximum coverage
- 3-sided pad intake area allows for maximum cooling
- 1/3 HP, 4.3 AMPS, 115 VOLTS



- ### HESM250 CALL M250 Mobile Evaporative Cooler
- High Vis Green Trim and power cord
 - Adjustable Front Louvers for multidirectional airflow
 - 5,300 CFM air flow
 - Three-sided cooling padding ensures more cool air circulated, up to 1,600 sq/ft.
 - 14.6-gallon water tank



- ### HESM150 \$804.45 M150 Mobile Evaporative Cooler
- Chills and humidifies spaces up to 950 sq/ft.
 - 10.3-gallon water reservoir



HESM270R CALL M270R 5300 CFM High Velocity Cooling Fan with Storage

- Utility Storage Top
- Heavy Duty Push/Pull Handle
- Heavy Duty Casters
- Easy Operating Controls,
- Multiple Fan Speeds
- Air Sweep

- ### HESMC18V \$346.95 MC18MG Mobile Evaporative Cooler
- Adjustable front louvers for multidirectional airflow
 - Portable - with top carrying handle and caster wheels
 - Proprietary swept wing prop design for optimal airflow



A/C TOOLS & EQUIPMENT

Shop Fans



Oscillating 30" Pedestal Industrial Fans

- 1/2 HP energy efficient motor
- 3-Speed motor
- 5320 cfm (High)
- 4272 cfm (Medium)
- 2880 cfm (Low)
- Height adjustment up to 76"
- 1 Year Warranty

KTI77730 (Non-Oscillating) \$321.45

KTI77734 (Oscillating) \$384.95

KTI77723 \$472.95

Non-Oscillating 24" Waterproof Pedestal Fans

- 120V/60Hz
- Three speed IPX4 Waterproof Rated Motor
- 7435 CFM
- 6 Foot GFCI Power Cord
- UL&CUL Approved

* Use KTI77745 Mistig Fan Attachment with these Fans

KTI77733 \$158.95

18" Pedestal Industrial Fan

- 1/8 HP energy efficient motor
- 3-Speed motor
- 1810 cfm (High) • 1540 cfm (Medium) • 1332 cfm (Low)
- 3-blade aluminum design
- 1 Year Warranty
- Height adjustment up to 57"

KTI77721 \$109.95

18" Floor Industrial Fan

- 3-Speed motor: High (2447CFM), Medium (1996CFM), Low (1587CFM)
- Includes optional wall mount bracket
- 3-blade aluminum design provides even airflow for quiet operation
- Direct airflow where it is needed with 360° tilt feature
- Black powder-coated finish
- 5-1/2 ft power cord



24" Direct Drive Industrial Tilting Drum Fans

- 1/2 HP energy efficient motor
- 2 Speed motor
- 6940 cfm (High)
- 5,250 cfm (Low)
- 3-blade aluminum design provides even airflow for quiet operation
- 1 Year Warranty

KTI77740 (Yellow) \$262.45

KTI77741 (Black) \$262.45

30" Wall Fans

- Wall Fan 30" with three speeds
- 120 Volt / 60 Hz / 2.4 Amps
- High Speed: 1125 RPMs / 7930 CFM with power consumption 280 Watts
- Medium Speed: 1058 RPMs / 6144 CFM with power consumption 230 Watts
- Low Speed: 825 RPMs / 2880 CFM with power consumption 123 Watts

KTI77731 (Non-Oscillating) \$224.95

KTI77732 (Oscillating) \$351.45

KTI77735 \$251.95

30" Direct Drive Drum Fan

- 120V/60Hz
- 2 Speed Motor
- High Speed 8800 CFM / Low Speed 5100 CFM
- 6 Foot Power Cord
- UL Listed

42" Belt Drive Industrial Drum Fans

- 7/8 HP energy efficient motor
- 2-Speed Motor
- 14800 cfm (High)
- 11,250 cfm (Low)
- 4-blade aluminum design provides even airflow for quiet operation
- 8" Rubber wheel for easy maneuverability
- Safety yellow powder coated finish
- 1 Year Warranty

KTI77742 (Black) \$996.95

KTI77743 (Yellow) \$996.95

24"

30"

30"

42"



A/C TOOLS & EQUIPMENT

Shop Fans



- KT177760** **CALL**
60" High Velocity Belt Drive Industrial Drum Fan
- High Speed 22100 CFM / Low Speed 13000 CFM
 - 2 Speed operation
 - 120V/60Hz, 8.8 Amps
 - 6.74 Foot Power Cord
 - 4" Rubber wheels
 - Overheating protection



- KT177703** **\$169.95**
800 CFM Utility Floor Blower
- Power by a 1/5 HP motor, 2.3 amps producing 800 cfm
 - 4 Drying Positions: (0°, 20°, Kickstand 45° & 90°)
 - Can be stacked and daisy chained for additional drying performance
 - 1 year warranty



Utility Blower Fans

- For indoor or outdoor use
- 3 speed with 4-position adjustment for centralized airflow and quick drying
- Moves air up to 50 feet away
- Two grounder outlets with overload protection
- 1 year warranty

KT177702 - 300 CFM \$130.95
KT177700 - 1200 CFM \$174.45



MLW0821-20 \$356.95

M18™ Brushless 18" Fan

- Air circulation over 50 ft reach and 13.5 MPH air speed
- Reinforced design for impact, water, and dust resistance
- Brushless motor for durable cooling and increased life
- 18-inch blade allows for quick and efficient cooling, drying, or ventilation
- 360-degree head rotation to adapt to any job
- Stackable design for optimized storage and transportation
- 3 speed settings: high, medium, low

M18



PACKOUT™
MODULAR STORAGE SYSTEM

M18

MLW0818-20 \$192.95

M18™ PACKOUT™ Brushless Fan

- Cooling air speed up to 20.5 MPH and 850 CFM
- Brushless motor for increased life
- Modular connectivity with All PACKOUT™ components
- The M18™ REDLITHIUM™ XC5.0 Battery delivers over 3 hours on high and 6.5 hours at 75% speed
- Integrated AC plug for extended runtime
- Variable speed dial for optimized airflow
- 300-degree head rotation to adapt to any job



MLW0820-20 \$138.45

M12™ Mounting Fan

- Powerful magnets, a 2 inch spring-loaded clamp, keyholes, and pass-through holes to deliver air movement wherever needed



M12

A/C TOOLS & EQUIPMENT

Cooling System Tools



Mastercool®
"World Class Quality"

MSC71500-A \$1,268.95

Hydra-Krimp AC Hose Crimper

- Hydraulic operation
- Covers all A/C hose sizes
- Hand held operation
- Crimp hoses on the vehicle

Patented Hydra-Krimp makes crimping barbed and beaded fittings easy.



MSC72475-PRC \$646.95

Universal Hydraulic Flaring Tool Set

- Tube and die set stabilizing arm for easy tube forming
- Magnetic adapter holder keeps adapters in place
- Equipped with an enlarged die set compression area for better grip of dies



MSC72485-PRC \$654.45

Universal Hydraulic Flaring Tool Set with GM Transmission Cooling Line Dies And Adapters

- Tube and die set stabilizing arm for easy tube forming
- Magnetic adapter holder keeps adapters in place
- Equipped with an enlarged die set compression area for better grip of dies
- Includes the 3/8" & 1/2" GM transmission cooling line die and adapter set



cps®

CPSTL4537 \$777.95

Hydraulic Flaring Kit

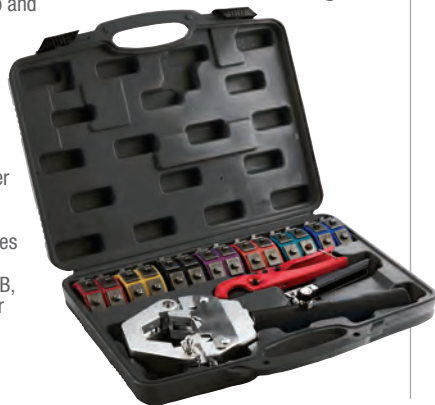
- Creates 45-degree SAE inverted, ISO bubble, push-connect, GM fuel line, and single flares
- Includes 19 adapters for push-connect, double flaring, metric bubble, GM fuel line, and GM transmission cooling lines
- Comes with 17 die sets ranging from 3/16" to 1/2" for compatibility with various line sizes
- Features a powerful hydraulic crimp pump and yoke for effortless and precise flaring



CPSTLHHCK \$1,040.45

Hydraulic Hose Crimper Kit

- Versatile Compatibility: Crimps A/C hoses #6, #8, #10, #12, including reduced barrier
- Comprehensive Die Set: Seven die sets included for various hose sizes and types
- The Hydraulic A/C Hose Crimper Kit includes a hydraulic crimp pump, hydraulic crimp yoke, pipe cutter, and seven die sets (6SRB, 6-8SRB, 10SRB, 12SRB, 8, 10, and 12) for standard and reduced barrier hoses



ROBINAIR®

ROB30060 \$183.45

60 1/4" Hose Set of 3

- Neoprene-coated for flexibility and wear resistance
- Valve core depressor and a 45° bend on one end for convenient access
- 500 psi working pressure, 2500 psi burst pressure



CTA8851 \$33.45

Extra Long Flex Driver with 1/4" Sq. x 1/4" Hex Adapt

- Designed for accessing tight areas to service hose clamps and other fasteners



S.U.R.&R®

SRPFT409 \$632.95

Pistol Grip Flaring Tool

- Heavy duty hydraulic ram with over 6,000 PSI crimping pressure
- Magnetic yoke holds dies in place
- Use on or off car (including use within vise)
- Comes ready to flare tubing sizes 3/16", 1/4", 5/16", 3/8" and 4.75mm (single, double, DIN)
- Dual handles for optimal control and positioning



LANG TOOLS
Professional Tools For 4 Generations

KAS1500 \$140.95

3 Piece Hose Pinch Off Pliers Set

- Contains all three pliers, small, medium & large
- Comes in a plastic pouch
- Made in USA



FJC

Air Conditioning Products
Tools, Equipment & Refrigerant

FJC6846 \$43.45

R-1234yf Service Hose and Gauge

- For use with R-1234yf
- Quick and accurate filling



FJC6845 \$38.45

U-Charge Hose with Coupler

- R-1234yf charging hose for use with self-sealing valve cans



FJC6037 \$43.45

U-Charge Hose with Gauge

- For self-sealing valve cans
- Monitor pressure for correct charge





MILLT896KIT \$257.45 Tractor/Trailer Brake Spring Installation Tool Combo Kit

- For rear drum brake return springs, and Eaton air brake shoe anchor springs.
- Universal and Versatile: Suitable for a wide range of brake springs, providing flexibility and convenience.



MILS-568 \$163.95 Digital Tire Inflator Gauge with Kwik Grip Chuck

- 360° swivel gauge
- Pressure range and accuracy gauge meets ansi/asma b40.1 Standard.
- 0-255 Psi - resolution of 0.1 Psi, kpa (0-1800), kg/cm2 (0-18), and bar (0-18)



MILZE25FC \$1,106.95 25-Gallon Fuel Caddy with Two-Way Rotary Pump

- Compatible Fuel Types: Gasoline, Kerosene, Diesel
- Dispensing Hose: 7'



MILZE21EVB \$898.95 21-Gallon Professional Fluid Evacuater with Measuring Bowl

- 9.5 qt (2.4-Gallon) measuring bowl is transparent with level indicators to identify the amount of fluid removed.
- Easy to view built in sight gauge allows users to know when it is time to empty the tank.
- Simple Air Evacuation: Evacuate the drain by using an air connection and connecting to the drain.
- Fixed axel and casters configuration.



PMXA200PRO \$508.45 Dodge Hemi 5.7L, 6.1L Exhaust Manifold Repair ProKit

- Interchangeable bushings with fasteners and Extractorless™ capability.
- Precision engineered .001" accuracy, .0001" dead flat.
- Patented and Made in U.S.A.



PMXFRA500PRO \$538.45 F-150 Axle Tool

- Disk fits directly to hub and is adjustable to fit over the broken bolt to provide a stable surface
- Special Bushings designed to guide the drill bit
- Tooling drill bits provide a fast accurate drilling



LTILT146 \$141.95 Quick Connect Lockout Kit

- Whale tail tip design for more working tip on lock surfaces.
- Adjustable 5 piece kit for 33" reach to an amazing 53" reach.
- Kit also includes the Inflate-A-Wedge™ (LT275), Plastic Slip Jim (LT-100) and two Plastic Door Wedges (LT271).
- Zinc plated.



LT14165 \$574.45 20 Piece BMW Wheel Lock Screw Socket Set

- Includes wheel lug nut keys 041-060
- Remove 2011-present BMW factory wheel lug nut locks
- Removes 20 of 60 Mercedes factory wheel lug nut locks



LTILT4160 \$285.45 21 Piece BMW Wheel Lock Bolt Kit

- For removal of 1st generation BMW internal spline drive wheel locks.
- Includes 20 splined lug nut keys with a nylon sleeved 1/2" drive 17mm installer socket
- Includes anti-scratch nylon sleeved installer socket



LTILT148 \$132.95 3 Piece E-Z Open Lockout Kit

- Super strong 1/4" connector sleeve for long lasting durability
- Tool handle can also be used to grab lift buttons or door handles
- Includes Inflate-A-Wedge to separate door from body of vehicle
- This kit allows you to work inside the door panel and inside the vehicle



LTILT955AH \$633.45 Bidirectional Air Hammer

- 3000BPM Air Hammer
- Includes Brass Regulator: Adjust air flow
- Shorter Stroke allows the tool tip to not be bouncing off the target
- Smaller tool allows user to access tighter areas
- Replaces Traditional Slide Hammers



\$460.45

STC35885 Bed Lifter

- Streamlines truck bed lifting with an easy-to-use, secure locking mechanism.
- Compatible with various truck models, making it suitable for diverse applications.
- Built with durable materials to withstand heavy-duty use by mechanics, DIYers, and off-road enthusiasts.



STC50133 \$416.95 Ford Transit Engine Removal Plate

- Facilitates Removal of Engine through the front of the vehicle
- No need To Remove Sub Frame
- Eliminates the chance for Breaking Chassis Bolts
- Lifetime Warranty



STC21892 \$63.95 Aluminum Skin Zipper

- Attach a new aluminum door skin with rope hem in approximately 15 minutes before the two part bonding agent has time to set
- New Air Hammer driven door skinning tool for any 1mm aluminum skin and 1.5mm door shell
- Easily skin the door with minimal refinish required to paint and/or reapply e-coating



STC21894 \$63.95 Skin Zipper2

- The Skin Zipper2 can now skin the window opening with its self-lubricating reinforced Nylon head that will crimp regular or adhesive bonded skins
- Easily hem the window opening with minimal refinish required to paint and/or reapply e-coating



STC21896 \$67.45 Aluminum Skin Zipper 2

- The AI Skin Zipper2 can now skin the window opening with its self-lubricating reinforced Nylon head that will crimp regular or adhesive bonded skins
- Easily hem the window opening with minimal refinish required to paint and/or reapply e-coating



A/C TOOLS & EQUIPMENT

Cooling System Tools



Mastercool®
"World Class Quality"

MSC43306 \$634.95

Truck Cooling System Pressure Test Kit

- Universal adapters to fit most large trucks
- Exposes external leaks in cooling system, cracked blocks, internal leaks in engine due to blown gaskets
- Packaged in blow molded case



MSC58490 \$302.45

Universal A/C Valve Core Remover and Installer Kit R12 / R134A

- These tools allow the user to service valve cores without losing the systems charge
- Makes removal or insertion much easier, especially on the larger R134A valve cores



MSC43301-A \$475.45

27 Piece Master Radiator Pressure Test Kit

- Includes 1 blue radiator cap test connector R123/R125, 1 black radiator cap test connector R123/R124, 1 thermometer, 1 universal radiator cap, 1 vacuum purge and refill tool, coolant hose, hand pump and 19 adapters



MSC43302 \$398.45

25 Piece Cooling System Pressure Test Kit

- Detects and exposes external system leaks
- Sintered steel Heavy duty adapter construction
- Detects internal engine leaks due to blown gaskets or cracked blocks
- Includes black and blue radiator cap test connectors
- 21 adapters, hand pump and thermometer



\$184.45

MSC58490-YF Valve Core Remover Installer For R1234YF Vehicles

- Remove valve cores with no refrigerant loss
- Covers all valve cores 1234yf vehicles



\$149.95

MSC58531 R134a Valve Core Remover and Installer

- Covers all R134a valve cores
- Heavy duty metal construction
- No refrigerant loss
- Includes blow molded case
- Eliminates the need to remove freon from the system



cps®

CPSTLVC5 \$177.95 A/C Valve Core Removal Tool Kit

- R-1234YF and R-134a highside quick connect couplers
- 1234YF and R-134a lowside quick connect
- Master shut off valve
- Standard, GM (large bore), JRA, 8mm and 10 mm valve core removers
- Valve steam and core too



FJC

Air Conditioning Products
Tools, Equipment & Refrigerant

FJC43664 \$418.45

Radiator & Cap Pressure Tester Kit

- For use in pressure testing Radiator caps and radiators
- For use with most domestic and import autos and light trucks



FJC2710 \$117.45

18 oz. Flush Kit

- Designed specifically for use with FJC2405, FJC2406, FJC2032 and FJC2128
- Use flush kit to remove contaminants, moisture, and acid from air conditioning systems using refrigerants R12, R124a, or R22



AST78585 \$510.95

Pneumatic Radiator Pressure Tester & Vacuum Type Cooling Kit

- Set includes: Gauge : Test Range 0 ~ 2.5 bar., Blue and Black Test Adapter to test original cap leakage, 16 pieces Radiator Tester Caps and Radiator Purge and Refill Tool



Astro



CTA7050 \$441.45

Radiator Pressure Tester Kit

- Pump with gauge • 12" hose and cap adapter
- 1/4" spacer washer • 3 radiator adapters



THX101 \$9.45

Cold-Chek® Anti-Freeze Coolant Tester

- Tests to -34° - indicates optimal 50/50 mixture
- Original ball-type, specific gravity tester
- Special 6th ball shows overprotection and loss of cooling protection
- Number floating balls measures degree of protection

THEXTON



KTI70211 \$12.45

Antifreeze Tester

- Tests strength of all permanent solutions (ethylene glycol), with engine hot or cold, and includes temperature adjustment scale for accurate interpretation of mixture strength
- +32° F thru -45° F

K TOOL INTERNATIONAL



ASSENMACHER SPECIALTY TOOLS
ASTool.com

ASSFZ25 \$80.95

Radiator Adapter Volvo

- For pressurizing cooling system
- Female 47 x 3mm threads
- Used in conjunction with Stant tester # ST 270
- Applicable: Fits Volvo, Mini Cooper (through 2007), Jeep, Land Rover, Renault, Saab and Trucks with 47x3mm threads on the filler neck. Works in new BMW V8 Tein Turbo Intercooler Coolant Reservoir
- Made in the U.S.A.



ASSFZ47 \$97.95

Cooling System Adapter Mazda

- Applicable to 2004-2006 Mazda 3
- Fits 2008 Volvo models (except XC90); fits 2004-2005 Volvo S40 and V50 (new body style)
- 2007-2008 Land Rover LR2
- Tank Adapter Works On 2013 Fusion, Escape, Focus, Fiesta And C-Max Vehicles
- Made in the U.S.A.

A/C TOOLS & EQUIPMENT

Cooling System Tools



UVU550500HD \$244.45

Heavy Duty Airlift II

- Eliminates airlocks during coolant refills
- Extra long refill hose designed for Heavy Duty trucks
- Streamline design...no switching hoses
- Reinforced glass-filled nylon construction
- Universal cone adapter to accommodate all heavy duty vehicles



UVU550000 \$269.95

Airlift Cooling System Refiller

- Eliminate airlocks in vehicle cooling systems
- Kit includes: Venturi connector with hose; fill hose with filter; (4) sizes of rubber adapters; universal cone adapter and storage case.



UVU560000 \$125.45

Combustion Leak Tester

- Dual chamber unit eliminates false positives and provides for a high accuracy test
- One universal test fluid for both gas and diesel
- 16 ounce test fluid good for 16 applications
- Foam lined storage case to protect the tester (glass)



MITMV7270 \$206.95

Cooling System Flusher & Spray Washer

- Complete with interchangeable cooling system nozzles for quick and effective flushing of cooling systems without the use of solvents or harsh chemicals. Fits hoses 1/2" to 2" in diameter.
- Comfortable lever-action air throttle with lock-on latch. Working pressure: 85 - 150 psi.



MITMV4560 \$120.95

Radiator / Cooling System Pressure Test Kit

- Test radiator and coolant bottle caps
- Contains adapters to test the cooling system and caps of most US and Asian manufactured cars



MITMV4525 \$721.45

Coolant System Test, Diagnostic and Refill Kit

- Patent pending coupler combines pressure, vacuum, and temperature testing capabilities in one kit
- Includes four (4) adapters for connecting to the most common radiator and coolant bottle necks found on domestic and Asian automobiles



ROB75240 \$171.45

Coolant and Battery Refractometer

- Used for measuring the freezing point of either propylene or ethylene glycol based cooling systems
- Used for checking the strength of electrolyte solution batteries
- Scale range: 32° F to -60° F
- It is used on transportation vehicles, such as cars, tractors, tanks, ships, etc., which use propylene or ethylene glycol for coolant and sulphuric acid for charging liquid
- It can also be used for checking the strength of electrolyte solution batteries



CPSVG200 \$288.45

Vacuometer Vacuum Gauge with Digital Display

- Individually calibrated to strict NIST standards with accuracy of $\pm 10\%$ of reading
- Incorporates surface mount technology
- Automatically compensates for ambient temperature changes
- Selectable measurement units in Microns, Torr, in/hg or mBar
- Field cleanable sensor with extended range from atmosphere down to 0 microns



CPSNITROKITG \$510.45

Nitrogen Pressure Leak Test Kit with Regulator

- Test manifold with 0-200 PSIG gauge
- 6' Red service hose with 1/4" SAE female
- R134a Hi side snap coupler
- 25' coiled air hose assembly with 1/4" MPT x 1/4" coupler



Mastercool[®] Inc.
"World Class Quality"

MSC81490 \$76.45

R134a Valve Core

Remover and Installer

- For high (16 mm) and low (13 mm) service port standard type valve
- Designed for use of servicing valves in R134a systems with standard valve cores
- Built-in ball valve retains charge and allows access to A/C system



MSC81290 \$11.45

Universal Valve Core Remover/Installer (R12 and R134A)

- Double ended for easy replacement of standard and large bore valve cores for R12, standard and JRA (M6) EATON (M8, M10) valve cores for R134a



MSC71202 \$426.45

Hydra-Flare Yoke and Assembly

- Tube & die set stabilizing arm
- Magnetic adapter holder
- Enlarged die set compression area
- Improved hydraulics
- Replaces the MSC71201