

*Silvercrest*<sup>®</sup>///

OPTION PHOTOS BOOK

2019

299 North Smith Avenue, Corona, CA 92880

T/ 800-382-0709 F/ 951-737-8836

[www.silvercrest.com](http://www.silvercrest.com)

# CONSTRUCTION



2X4 EXTERIOR WALL



2X6 EXTERIOR WALL



STANDARD ROOF VENTS



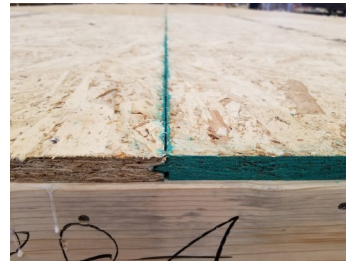
METAL ROOF VENTS



SINGLE ARCHED PORCH



DOUBLE ARCHED PORCH



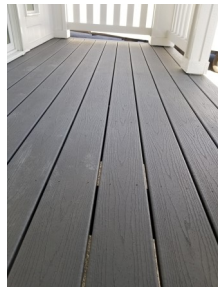
3/4" T&G FLOOR DECKING



RECESSED ENTRY



STRAIGHT PORCH



COVERED DECK W/ TREX DECKING



DEN W/ DOUBLE DOORS



ANGLED CORNER AT END/SIDEWALL



STAIRWAY CUTOUT IN PORCH



HIPPED ROOF OVER PORCH



SPRINKLER TREE SYSTEM

# HEATING, PLUMBING, & AIR



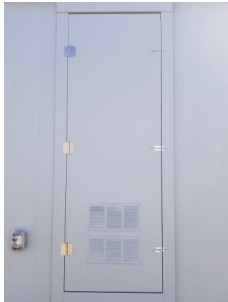
**GAS TANKLESS  
WATER HEATER**



**30 GALLON GAS  
WATER HEATER**



**40 GALLON GAS  
WATER HEATER**



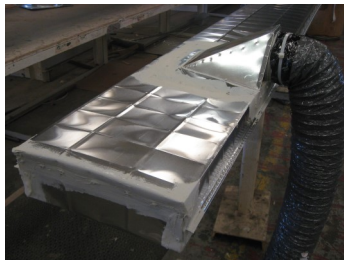
**WATER HEATER DOOR**



**PLUMBING FOR  
INSTALLED ICEMAKER**



**RECESSED WASHER/DRYER  
PLUMBING**



**ALUMINUM HEAT DUCT**



**MANUAL HEAT/COOL  
THERMOSTAT**



**DIGITAL SET BACK  
THERMOSTAT**



**HOSE BIBB**



**COPPER WATER LINES**



**TUFFPEX WATER  
LINES**

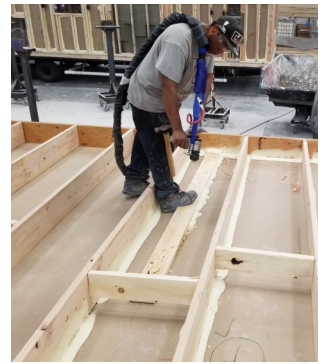
# INSULATION



R-22 CELLULOSE  
ROOF INSULATION



R-13 FIBERGLASS  
WALL INSULATION



SPRAY POLYURETHANE  
FOAM (SPF)

# ELECTRICAL



GFI EXTERIOR  
RECEPTS



ROCKER RECEPTS



ROCKER SWITCHES



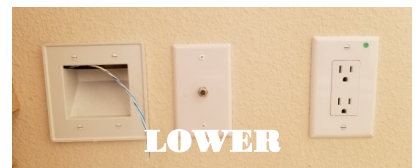
COVERED CEILING  
LIGHT BOX W/ SWITCH



TV/PHONE  
JACK



USB RECEPTS



TV PREP W/  
RACEWAY & OUTLETS



CEILING VENT FAN



DOOR CHIMES



DOOR BELL



"NIGHTLIGHT"  
RECEPTACLE COVER

# ROOF



1 WINDOW CLERESTORY



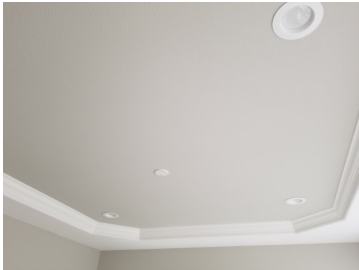
2 WINDOW CLERESTORY



3 WINDOW CLERESTORY



3 WINDOW CLERESTORY—FLAT CEILING  
(INTERIOR)



COFFERED CEILING W/ CROWN  
MOLDING (CLIPPED/SQUARED  
CORNERS)



COFFERED CEILING W/SQUARED  
CORNERS (NO CROWN MOLDING)



2" REAR OVERHANG



NO EAVES



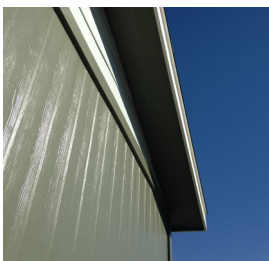
ADD DECORATIVE GABLE  
TO 15'



"GABLE" TOWER DORMER W/  
STACKED WINDOWS



"HIPPED" TOWER DORMER



ADD 16" REAR OVERHANG



SKYLIGHT 2X2



SOLAR TUBE

# ROOF COVERING

## 25 YEAR 3-TAB SHINGLES



EARTHTONE CEDAR

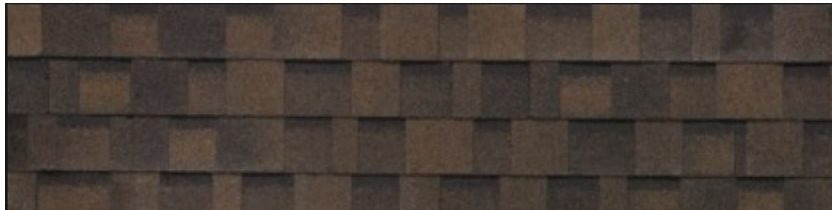


DUAL GREY

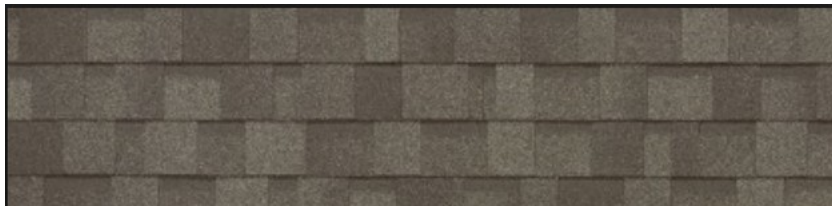
## 30 YEAR ARCHITECTURAL SHINGLES



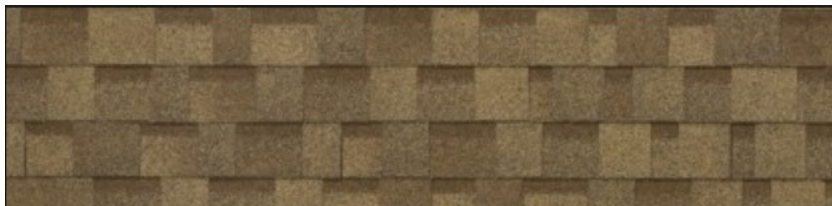
DUAL BLACK



DUAL BROWN



WEATHERED WOOD



EARTHTONE  
CEDAR



ARTIC WHITE

# EXTERIOR



***STANDARD***  
VERTICAL SIDING



***STANDARD***  
4/4 DIMENSIONAL  
TRIM



5/4 DIMENSIONAL  
TRIM



STANDARD FASCIA



5/4 DIMENSIONAL  
FASCIA



BOX-OUT WITH  
EYEBROW  
FRONT WINDOW



2 3/4 REVEAL LAP  
SIDING



SUMMIT STYLE  
SHUTTER



BRADFORD STYLE  
SHUTTER

## EXTERIOR



ALLURA SHINGLE SIDING



1/2" CCX PLY FOR  
SITE INSTALLED SIDING



BOARD & BATT  
EXTERIOR SIDING



CEMENT LAP W/ HOUSEWRAP



HOUSEWRAP ON EXTERIOR  
WALLS



SHADOW LAP SIDING

## COUNTER FEATURES



BANJO LAVY COUNTERTOP



FULL HEIGHT TILE KITCHEN  
BACKSPLASH TO BOTTOM OF  
OVERHEAD CABINETS



BEVELED EDGE WHITE  
SUBWAY BACKSPLASH



CORIAN KITCHEN BACKSPLASH TO  
OVERHEAD CABINETS



FULL HEIGHT BACK-  
SPLASH TO CEILING  
BEHIND RANGE HOOD



SUBWAY TILE KITCHEN  
BACKSPLASH



# CABINET FEATURES

\*For Veranda, Craftsman, Cambridge, Crystal Cove, and Laguna Style Cabinet Doors, please see samples.



ROLL OUT SHELVES



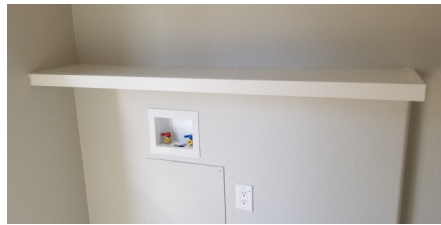
FRAMED LAVY MIRROR TO MATCH CABINETS



CABINET OVER REFRIDGERATOR—HARDWOOD



MDF CABINETS—EBISU PINE



UTILITY SHELF OVER WASHER/DRYER



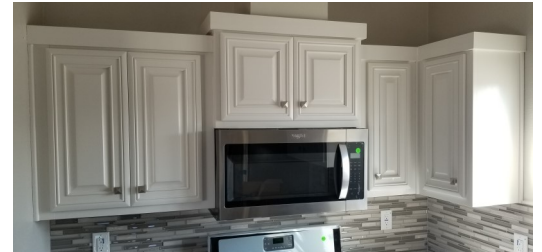
42" UTILITY CABINET OVER WASHER/DRYER



WATERFALL ISLAND (SHOWN IN QUARTZ)



PLAIN GLASS CABINET DOOR INSERTS



LANDSCAPE CABINETS



**STANDARD**  
DRAWER GUIDES—THROUGHOUT



HEAVY DUTY DRAWER GUIDES—THROUGHOUT



KNOB AND PULL OPTIONS FOR CABINETS AND DRAWERS

# CABINET FEATURES

\*For Veranda, Craftsman, Cambridge, Crystal Cove, and Laguna Style Cabinet Doors, please see samples.



REFRIDGERATOR CABINET—  
BUILT IN LOOK & ADDED  
SIDE PANEL



DRAWER OVER DOOR BASE  
CABINETS - KITCHEN



ADJUSTABLE SHELVES IN OVERHEAD  
CABINETS



6 DOOR LINEN OR PANTRY  
CABINET—VERANDA STYLE



3 DOOR LINEN OR PANTRY  
CABINET—VERANDA STYLE



SOFT CLOSE CABINET HINGE



LAUNDRY TUB BASE CABINET  
w/ VERANDA STYLE DOORS



TRASH DRAWER



POT AND PAN DRAWERS

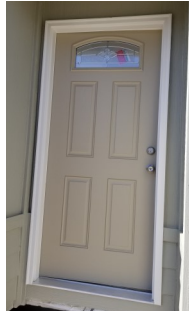


FURNITURE STYLE ISLAND

# DOORS & HARDWARE



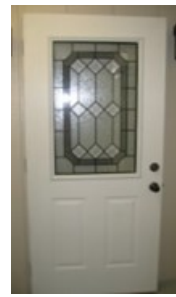
3-LITE CRAFTSMAN  
FRONT ENTRY DOOR  
(SHOWN W/OPTIONAL  
PAINT)



NOUVEAU FRONT  
ENTRY DOOR



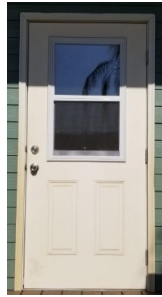
PAINTED ENTRY  
DOOR



MAJESTIC FRONT  
ENTRY DOOR



K-10  
EXTERIOR DOOR



K-18  
EXTERIOR DOOR



K-25 EXTERIOR  
DOOR



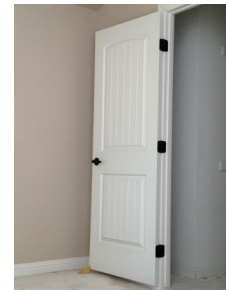
K-25 EXTERIOR  
DOUBLE DOORS



DE-23  
REAR DOOR



FRONT ENTRY DOOR  
DE-21



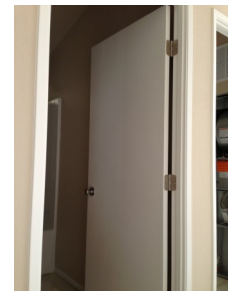
CHEYENNE BEADED  
PASSAGE DOORS



INTERIOR  
DOUBLE DOORS



INTERIOR  
FRENCH DOOR WITH GRIDS  
(ALSO AVAILABLE WITHOUT GRIDS)



FLAT PANEL  
PASSAGE DOORS

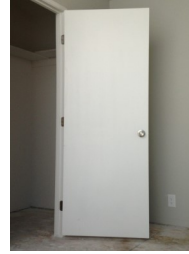
# DOORS & HARDWARE



SLIDING GLASS DOOR -  
AVAILABLE IN  
6X6, 6X8, 8X6, & 8X8



8' WIDE SLIDING  
GLASS DOOR



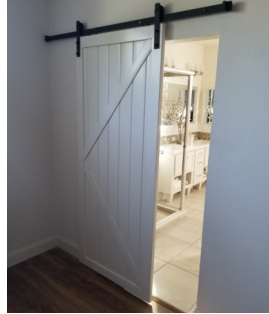
PD-01



ETCHED 24" GLASS  
"PANTRY" DOOR



8X36 RAINGLASS BARN  
DOORS



WHITE BARN DOORS



WEATHERED BARN DOORS



72" MIRRORED  
WARDROBE DOOR



LOUVERED INTERIOR  
DOOR



POCKET DOOR



AVALON 3-PANEL  
PASSAGE DOOR



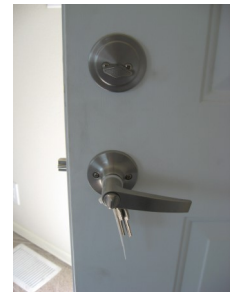
SATIN NICKEL LEVER  
INTERIOR DOOR  
HARDWARE



ANTIQUe BRONZE LEVER  
STYLE INTERIOR DOOR  
HARDWARE



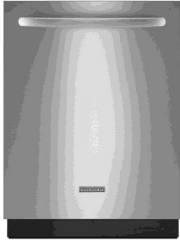
LEVER ENTRY DOOR  
HARDWARE



ROUND ENTRY DOOR  
HARDWARE

## FEATURED APPLIANCES

**\*Attention Customers:** the images portrayed of our appliance selections are only general representations of the available featured products. Silvercrest strives to continually bring to you new and exciting appliance options, see your dealer for details.



\*24" SUPERBA 5 CYCLE  
EQ DISHWASHER—  
KITCHEN AID



\*24" FULL CONSOLE 3  
CYCLE DISHWASHER—  
WHIRLPOOL



\*4.4 CUFT 4 BURNER  
GAS RANGE—



\*6 CUFT DOUBLE  
OVEN 4 BURNER GAS  
RANGE—WHIRLPOOL



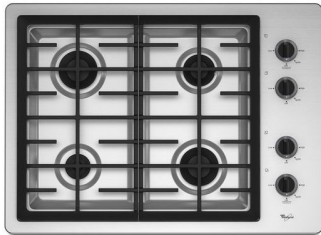
\*GAS 36" STAINLESS STEEL  
5 BURNER COOKTOP—  
KITCHENAID



\*30" GAS DOWNDRAFT 2  
BURNER COOKTOP  
W/ GRILL—JENN-AIR



\*5 CUFT SELF  
CLEANING STAINLESS  
STEEL GAS RANGE—  
WHIRLPOOL



\*GAS 30" STAINLESS STEEL  
BUILT-IN 4 BURNER



\*30" RADIANT ELECTRIC  
BUILT-IN 4 BURNER COOK-  
TOP—WHIRLPOOL



\*7.6 CUFT BUILT-IN  
30" ELECTRIC STAINLESS  
STEEL DOUBLE WALL OVEN—  
KITCHENAID



\*5.0 CUFT 30" ELECTRIC  
WALL OVEN—WHIRLPOOL



\*10 CUFT ELECTRIC  
DOUBLE WALL  
OVEN—WHIRLPOOL



\*5.0 CUFT BUILT-IN  
30" ELECTRIC STAINLESS STEEL  
WALL OVEN—KITCHENAID

## FEATURED APPLIANCES (Continued From Previous Page)

**\*Attention Customers:** the images portrayed of our appliance selections are only general representations of the available featured products. Silvercrest strives to continually bring to you new and exciting appliance options, see your dealer for details.



**\*17.6 CUFT TOP FREEZER REFRIDGERATOR W/ WIRE SHELVES—WHIRLPOOL**

**\*17.6 CUFT TOP FREEZER REFRIDGERATOR W/ GLASS SHELVES & ICE MAKER—WHIRLPOOL**

**\*22 CUFT SIDE BY SIDE REFRIDGERATOR W/ GLASS SHELVES & FRONT ICE/WATER DISPENSER—WHIRLPOOL**

**\*23.6 COUNTER-DEPTH SIDE BY SIDE REFRIDGERATOR W/ GLASS SHELVES & FRONT ICE/WATER DISPENSER (STAINLESS STEEL) - KITCHENAID #KSC24CBE**

**\*25.5 CUFT FRENCH DOOR REFRIDGERATOR W/GLASS SHELVES & FRONT ICE/WATER DISPENSER—WHIRLPOOL**



**\*26.4 CUFT SIDE BY SIDE REFRIDGERATOR WITH GLASS SHELVES & FRONT ICE/WATER DISPENSER—WHIRLPOOL (BLACK/WHITE)**

**\*26.4 CUFT SIDE BY SIDE REFRIDGERATOR W/ GLASS SHELVES & FRONT ICE/WATER DISPENSER—WHIRLPOOL (STAINLESS STEEL)**

**\*1.8 CUFT 1100 WT MICROWAVE W/ VENT SYSTEM—WHIRLPOOL**



**COSMO RANGE HOOD IN STANLESS STEEL**



**36" CHIMNEY STYLE RANGE HOOD—STAINLESS STEEL**



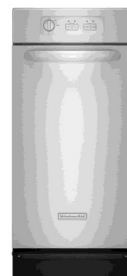
**30" RANGE HOOD**



**1/3 HP DISPOSAL**



**1/2 HP DISPOSAL**



**\*1.4 CUFT 5:1 TRASH COMPACTOR—KITCHENAID**

## FIREPLACE FEATURES



WOODBURNING  
FIREPLACE #1.5



WOODBURNING  
FIREPLACE #2



WOODBURNING  
FIREPLACE #3



WOODBURNING  
FIREPLACE #4



WOODBURNING FIREPLACE #7.0  
w/ HALF ROCK



WOODBURNING FIREPLACE  
#7.5 w/FULL ROCK



SEACLIFF FIREPLACE



ELECTRIC LINEAR FIREPLACE

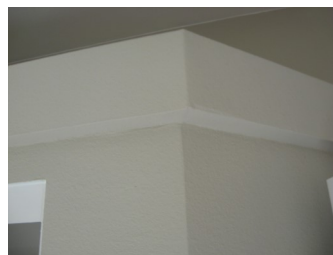
## INTERIOR FEATURES



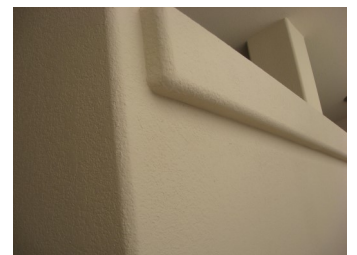
3 1/2" BASEBOARD  
MOLDING THROUGHOUT



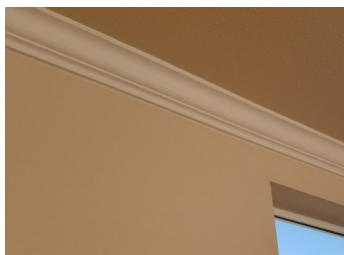
5-1/4" BASEBOARD



SQUARE DRYWALL CORNERS



ROUND DRYWALL CORNERS



CEILING CROWN MOLDING



DOUBLE POLES IN WARDROBES

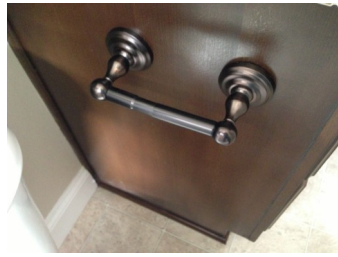


WOOD WINDOW SILLS THROUGHOUT

## BATHROOM FIXTURE FEATURES



STANDARD  
SATIN NICKEL TOWEL BAR



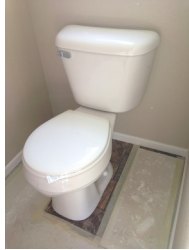
OIL RUBBED BRONZE  
TOILET PAPER HOLDER



OIL RUBBED BRONZE TOWEL  
BAR



BEVEL-EDGE MEDICINE  
CABINET



STANDARD  
SUMMIT TOILET



ELONGATED TOILET



COMFORT HEIGHT  
DUAL FLUSH TOILET

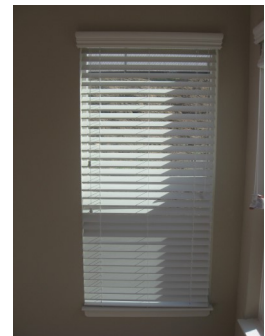
## WINDOWS



WINDOW GRIDS



K-5 PICTURE WINDOWS



2" FAUX WOOD BLINDS



WALK-A-BAY WINDOW—  
EXTERIOR



WALK-A-BAY WINDOW—  
INTERIOR



INTERIOR TRANSOM  
WINDOWS



## KITCHEN FAUCETS



*STANDARD*  
KITCHEN FAUCET



SINGLE LEVER  
FAUCET & SPRAYER



SINGLE LEVER FAUCET  
W/ PULLOUT SPRAYER



DELTA PULL DOWN  
FAUCET



HUNTINGTON BRASS WALL MOUNT  
POT FILLER FAUCET

## KITCHEN SINKS



COMPOSITE SINK



STAINLESS STEEL UNDERMOUNT  
SINK FOR GRANITE/CORIAN



STAINLESS STEEL  
UNDERMOUNT SINK FOR  
LAMINATE TOPS



DEEP STAINLESS STEEL SINK



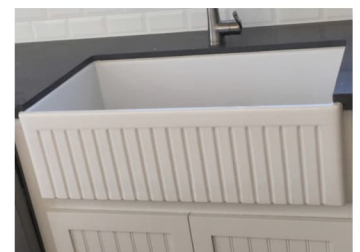
SINGLE CELL ABELIAN  
SINK W/GRATE



SINGLE CELL ABELIAN  
SINK



LAUNDRY TUB



WHITE FARMHOUSE SINK  
W/FLUTED FRONT (ALSO  
AVAILABLE IN SMOOTH FRONT)

## BATHROOM SINKS & FAUCETS



CHINA LAVVY SINK



UNDERMOUNT CHINA LAVVY



COMPOSITE UNDER-  
MOUNT LAVVY SINK



SQUARE UNDERMOUNT  
LAVVY SINK

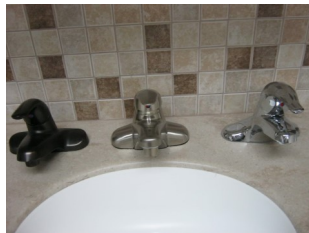


SQUARE TOP MOUNT  
LAVVY SINK

## BATHROOM FAUCETS



*STANDARD*  
LAVVY FAUCET



HUNTINGTON BRASS  
SINGLE LEVER LAVVY FAUCET



CHROME SINGLE LEVER  
LAVVY FAUCET



LAVVY FAUCET DOUBLE  
HANDLE CHROME



SATIN NICKEL  
WIDESPREAD LAVVY FAUCET

# TUBS & SHOWERS



STANDARD 60" TUB  
SHOWER



60" SHOWER W/  
CLEAR ENCLOSURE



36" WIDE SHOWER



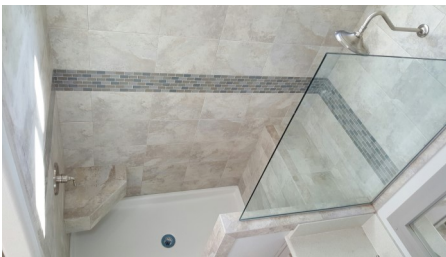
48"/60" WIDE SHOWER



CLEAR GLASS SHOWER  
ENCLOSURE



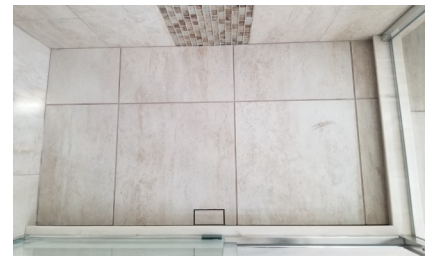
RAINFOREST SHOWER



MIRAGE SHOWER W/  
OPTIONAL CORNER SEAT



FREEDOM ACCESSIBLE  
SHOWER



HYDROBLOK SHOWER  
WITH LINEAR DRAIN



OVAL TUB/SHOWER  
COMBO



60" TILE SHOWER



60" TUB ENCLOSURE W/  
SURROUNDING TILE

# TUBS & SHOWERS



4200 TUB WITH DECK



WALK IN JETTED TUB



INSIDE WALK IN  
JETTED TUB



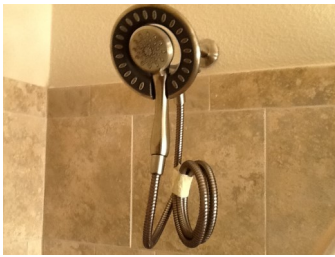
VESSEL TUB WITH FILLER



6' SOAKING ISLAND  
TUB



OVAL GARDEN TUB



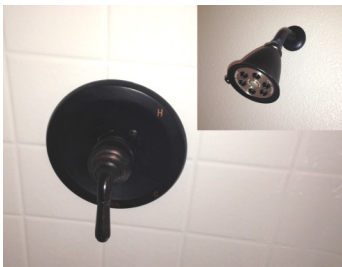
HANDHELD SHOWER HEAD



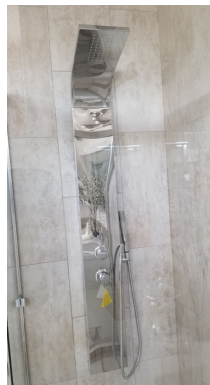
DUAL HANDLE  
CHROME TUB FILLER  
FAUCET



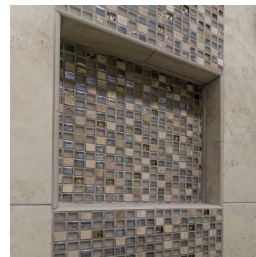
DUAL HANDLE HUNTINGTON  
BRASS TUB FILLER FAUCET



HUNTINGTON BRASS  
SINGLE LEVER SHOWER



SHOWER TOWER



OPTIONAL SOAP  
SHELF IN SHOWER



RAINFORREST SHOWER  
HEAD



# Silvercrest<sup>®</sup> III

## ULTRA EURO Kitchen Collection

- Single-Handle Kitchen Faucet with Pull-Down Spray
- 1 or 3-Hole Installation



UF14203  
Brushed Nickel



UF14207  
Matte Black



UF14200  
Chrome

### Standard Specifications:

- 1 of 3-hole installation with optional deckplate included
- 35mm ceramic disc cartridge
- 2-function pull-down spray head
- Metal handle
- Flexible stainless steel inlet hoses with 3/8" female compression connections 1.8gpm max @ 60psi.

### Finishes Include:

- Brushed Nickel (UF14203)
- Matte Black (UF14207)
- Chrome (UF14200)

### Warranty:

- Limited lifetime warranty on workmanship and materials to the original purchaser