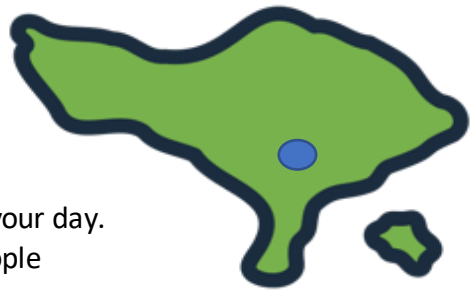


Ubud Tour



By **GO BALI TRAVEL**

This is a whole day tour which approximately take 10-12 hours of your day.
(Timing is depends on the traffic of the day) - Group of up to 6 people

Price Starting From AUD\$



Barong & Kris Dance (show start at 9.30 to 10.30am)

The Barong Dance is among the many art form closely associated with spirituality, it is often performed in ritual ceremonies. Potraying the classic battle of "Good vs Evil", the dance is one of the most well-known and loved on the island.

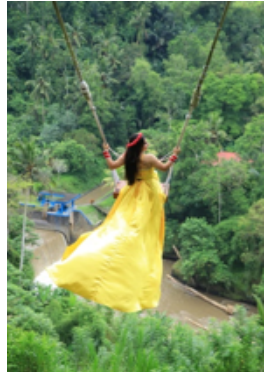
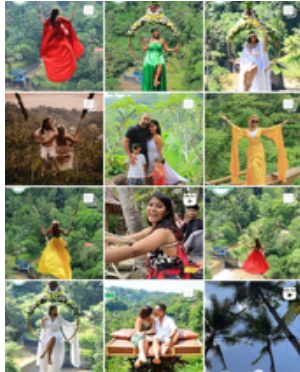
> **Entrance ticket included**



The Bali Swing (optional)

> pay on the spot depends on the package you take.
> please have cash (Rupiah) with you to make the purchase.

If you are looking for the INSTAGRAM photo, this is the one with the epic jungle view from the edge of the cliff.



Puseh Batuan Temple

This temple were founded in the year 1020 AD. Nearly 1000 Y.O. and still used by the local. A lot of history and beauty to discover within this temples. Close by is Batuan Village which is the centre of hand made arts. It has hand made batik, silver, wood carving which is best for sourvernirs.

> **Entrance ticket included**



Tegenungan WaterFall

Tegenungan waterfall is a great attraction for nature lovers. You can go down to the vast pebbly base and enjoy a dip in the plunge pool (but not advised after heavy downpours). You can request to your tour guide to have LUNCH here with the famous Balinese-style crispy fried duck.

> **Entrance ticket included**



Tirta Empul Water Temple

Also Known as the Holy Spring Water Temple stands as a captivating embodiment of spirituality and cultural heritage. The sacred water temple has captured the hearts of visitors from around the world with its serene atmosphere, intricate architecture, and unique purification rituals.

> **Entrance ticket included**



Ubud Monkey Forest

The Ubud monkey forest is a famous tourist attraction in Ubud. It has 186 species of plants and trees in 12.5 hectares of forest with 3 temples inside. It is a place to preserve the sacred place and promote the Ubud Monkey Forest as international tourist destination.

> **Entrance ticket included**

What's included in this tour.

- ✓ Air conditioned 7 seats private car.
- ✓ Entrance tickets
- ✓ Parking fee
- ✓ Petrol
- ✓ Pick-up and drop-of from your choice of hotel (preferred in Denpasar area and surroundings).
- ✓ English/Indonesian speaking driver/tour guide.
- ✓ A bottle of water per person.

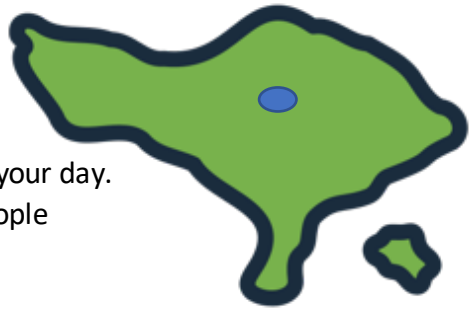
What's NOT included in this tour.

- ✗ Activities fee that isn't included in the tour's package.
- ✗ Lunch
- ✗ Entrance ticket and parking fee for extra destination.
- ✗ Gratuities
- ✗ Personal Expenses

Bedugul Tour

By **GO BALI TRAVEL**

This is a whole day tour which approximately take 10-12 hours of your day.
(Timing is depends on the traffic of the day) - Group of up to 6 people



Price Starting From AUD\$



Taman Ayun Temple

Pura Taman Ayun is compound of Balinese temple and garden with water features located in Mengwi subdistrict in Badung, Bali, Indonesia. The temple garden was featured on the television program *Around the World in 80 Gradens'* on 2012 as World Heritage Site by UNESCO.

> **Entrance ticket included**



Bedugul Chocolate Factory

Indonesia is one of the world's largest cocoa producers. One of the famous one is in Bali. You can learn about cocoa cultivation and the process behind it, with some chocolate tasting experience! It's a fun-filled and enjoyable workshop, suitable for everyone.

> **Entrance ticket included**



Ulun Danu Beratan Temple

This temple sits on Lake Beratan which is the second largest lake in Bali. The temple itself is has been recorded as early as 1556, and re-build in 1663 by the King of Mengwi. This temple is one of the icons as it's pictured on the Rp.50k bills.

> **Entrance ticket included**



Alas Kedaton Monkey Forest

This forest is actually a nutmeg forest & temple which serves as a sanctuary for grey long-tailed macaques. This one is the 2nd biggest monkey forest after the one in Ubud, Bali. It's slightly off the main tourist attraction, that means lesser crowds and more traditional. Worth a visit!

> **Entrance ticket included**



Tanah Lot Temple

Tanah Lot Temple is one of Bali's most important landmarks, which is famed for its unique offshore setting and sunset backdrops. An ancient Hindu shrine perched on top of an outcrop amidst constantly crashing waves, this is simply not-to-be-missed icons.

> **Entrance ticket included**

What's included in this tour.

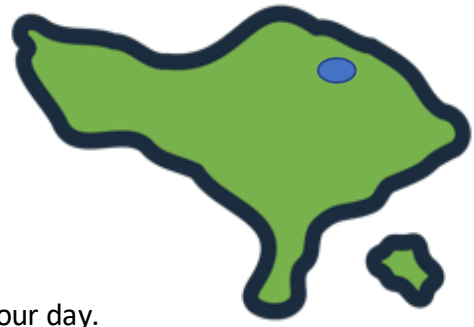
- ✓ Air conditioned 7 seats private car.
- ✓ Entrance tickets
- ✓ Parking fee
- ✓ Petrol
- ✓ Pick-up and drop-off from your choice of hotel (preferred in Denpasar area and surroundings).
- ✓ English/Indonesian speaking driver/tour guide.
- ✓ A bottle of water per person.

What's NOT included in this tour.

- ✗ Activities fee that isn't included in the tour's package.
- ✗ Lunch
- ✗ Entrance ticket and parking fee for extra destination.
- ✗ Gratuities
- ✗ Personal Expenses

Kintamani

Tour



By **GO BALI TRAVEL**

This is a whole day tour which approximately take 10-12 hours of your day.
Timing is depends on the traffic of the day) - Group of up to 6 people.

Price Starting From AUD\$



Penglipuran Village

It is a beautiful highland village in the regency of Bangli in East Bali that has earned recognition for its commitment to maintaining traditional architecture, customs and way of life. It famous as one of the cleanest villages in the world.

> **Entrance ticket included**



Kintamani Volcano

Kintamani Volcano is one of the most popular and favourite tourist attraction in Nort-East of Bali is home to bewithching nature and six ancient villages along the prime attraction, the memerising Batur Lake perched aside an active volcano.The villages of Penelokan, Toya Bungkah, Batur, Kedisan, Abung, Songanand Kintamani symbolie timeless beauty, as they surround the cauldron of the lake.

> **Entrance ticket included**



Mt. Batur Sunrise Trekking (optional) *start at 4 am*

You can climb Mt Batur on Kintamani Volcano and can reach the top about 1-2hrs (700m) and enjoy sunrise from the top of mountain.

> tour guide needed, extra fee applied

> for a group of max 4 people



Mt. Batur Sunrise Trekking JEEP (optional)

Another option to get to the top of Mt. Batur is by JEEP and explore the world famous black lava from eruption that occurred hundreds of years ago.

> extra fee applied for a group of 4 with a driver



Kintamani Coffee Plantation

Kintamani is the primary coffee growing region in Bali and Robusta coffee still accounts for the major part of the production in Bali which has unique taste and aroma. Have a smell and taste from many of kinds in this farm and bring home the best one you like.



Tegallalang Rice Terrace

Tegallalang Rice Fields is situated in a valley that offers extra ordinarily scenic lookout over the terraces and surrounding green landscape. Along with the villages, Tegallalang rice Fields form the most stunning looking terraced lanscape in this region.

> **Entrance ticket included**

What's included in this tour.

- ✓ Air conditioned 7 seats private car.
- ✓ Entrance tickets
- ✓ Parking fee
- ✓ Petrol
- ✓ Pick-up and drop-of from your choice of hotel (prefered in Denpasar area and surroundings).
- ✓ English/Indonesian speaking driver/tour guide.
- ✓ A bottle of water per person.

What's NOT included in this tour.

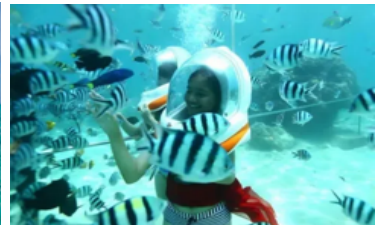
- ✗ Activities fee that isn't included in the tour's package.
- ✗ Lunch
- ✗ Entrance ticket and parking fee for extra destination.
- ✗ Gratuities
- ✗ Personal Expenses

Uluwatu Tour

By **GO BALI TRAVEL**

This is a whole day tour which approximately take 10-12 hours of your day.
Timing is depends on the traffic of the day) - Group of up to 6 people.

Price Starting From AUD\$



Water Sport in Tanjong Benoa, Uluwatu

This is a third party company, price depends on what activities and package you want to take.
Check online for standard pricing to avoid getting scam.

Water sports including underwater sea walking, surf class, jet ski, banana boat, snorkeling, etc.



Garuda Wisnu Kencana (GWK) Culture Park

After a wait of 28 years for its completion, the new improved 120 m high Garuda Wisnu Kenacana statue is majestic and amazing standing tall and proud in GWK culturak park Bali. This is the world's largest and highest monumental statue in the world! Enjoy its beauty in this cultural park with tons of other activity and finish up in Kencana Souvenir Shop.

> **Entrance ticket included**



Padang Padang Beach

Get down on around 120 steps between a fallen rock and cliffside to get to this beautiful white sand beach. The sea has a sandy bottom and moderate waves which are great for swimming. Or even just relax on the beach with food and drinks that are available along the beach.

> **Entrance ticket included**



Uluwatu Temple

Known by another name Pura Luhur Uluwatu, is renowned for its magnificent location, perched on top of a steep cliff approx. 70m above the waves. As one of the 6 key temples considered to be Bali's "spiritual pillars", Uluwatu also shares the splendid sunset backdrops. Enjoy daily Kecak dance performance at an amphitheatre nearby as well.

> **Entrance ticket included**



Jimbaran Seafood Dinner

Finish off your tour with a lovely dinner at Jimbaran Seafood Café.

There are plenty of restaurants to choose from along the beach.

Each café serves freshly grilled seafood at candlelit tables laid out on the beachfront.

This is the place to enjoy a memorable sunset.

> This is a third party company. Price depends on what restaurant you choose and what dishes you have.

> Café/Restaurant along the beach : *Pandan Sari, Pandan Sari Café, Intan Sari Café, Nyoman Café, Bela Seafood Café & Bar, Menega Café.*

What's included in this tour.

- ✓ Air conditioned 7 seats private car.
- ✓ Entrance tickets
- ✓ Parking fee
- ✓ Petrol
- ✓ Pick-up and drop-off from your choice of hotel (preferred in Denpasar area and surroundings).
- ✓ English/Indonesian speaking driver/tour guide.
- ✓ A bottle of water per person.

What's NOT included in this tour.

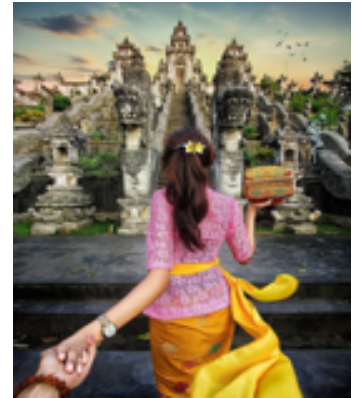
- ✗ Activities fee that isn't included in the tour's package.
- ✗ Lunch
- ✗ Entrance ticket and parking fee for additional destination.
- ✗ Gratuities
- ✗ Personal Expenses

Lempuyang Tour

By **GO BALI TRAVEL**

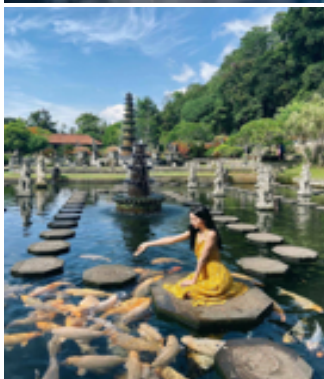
This is a whole day tour which approximately take 10-12 hours of your day. Timing is depends on the traffic of the day) - Group of up to 6 people.

Price Starting From AUD\$



Lempuyang Temple

Who doesn't know this famous Instragamable Photos! The 'Gate of Heaven' is insanelly popular. Lempuyang Temple is built on a hill which is impresive & exotic, especially with the captivating dragon heads & massively long tails staircases, descending from the top. You can see the magnificent Mt. Agung from the 'Gate of Heaven'. The Temple itself is so beautiful & historical with a lot of exciting stories behind it. > **Entrance ticket included**



Tirta Gangga

This was a Royal Palace that was built in 1948 by the late king of that area. The meaning of its name is "Water Palace" in Indonesia which has pools that believed to have holy water, that have a healing powers. The garden & pools just amazingly beautiful. Fish food is provided on entry to feed the fish.

Another spot for Instagram photos!

> **Entrance ticket included**



Tukad Cepung Waterfall

This unique waterfall tucked beneath Tembuku's jungle caves is unlikely any other in Bali. It's a 15 mins trek down some steep steps, but well worth the effort to catch rays of light shine down from the cave opening above. Water can be too shallow to swim, but stand under the fine mist of waterfall is sure to be another great experience and great Instagram's spot.

> **Entrance ticket included**



What's included in this tour.



Air conditioned 7 seats private car.

Entrance tickets

Parking fee

Petrol

Pick-up and drop-of from your choice of hotel (prefered in Denpasar area and surroundings).

English/Indonesian speaking driver/tour guide.

A bottle of water per person.

What's NOT included in this tour.



Activities fee that isn't included in the tour's package.

Lunch

Entrance ticket and parking fee for additional destination.

Gratuities

Personal Expenses