

No Question. We Have the Answers.

KECKLEY COMPANY
3400 Cleveland Street P.O. Box 67
Skokie, IL 60076
800-KECKLEY (800.532.5539)
847.674.8422
FAX 847.674.2106
email: sales@keckley.com
website: www.keckley.com

Established 1914

Ball Valves



Unibody Threaded

*Style BV12
2000 W.O.G.
R-PTFE Seats
Sizes 1/4" - 2"
Reduced Port

Seal Welded

*Style BVS2
2160 W.O.G.
R-PTFE Seats
Sizes 1/4" - 4"
Full Port

Seal Welded

*Style BVSC
Class 900 (2160 PSIG)
R-PTFE Seats
Sizes 1/4" - 2"
Full Port

Seal Welded

*Style BVS3
Class 1500 (3600 PSIG)
Delrin AF Seats
Sizes 1/4" - 2"
Full & Reduced Port

Seal Welded

*Style BVS6
Class 2500 (6000 PSIG)
PEEK Seats
Sizes 1/4" - 2"
Full & Reduced Port

Unibody Flanged

*Style BVF1
Class 150 & 300
R-PTFE Seats
Sizes 1/2" - 6"
Reduced Port

*Body/Trim Material: CS w/ 316SS Trim or CF8M w/ 316SS Trim.

*Available End Connections: NPT Ends, Socket Weld Ends, Socket Weld x FNPT Ends, or MNPT x FNPT Ends.



Split-Body Flanged

*Style BVF2
Class 150 & 300
R-PTFE Seats
Sizes 1/2" - 8"
Full Port

Split-Body Flanged

*Style BVF2
Class 600
R-PTFE Seats
Sizes 1 1/2" - 6"
Full Port

2-Piece Design

*Style BVM2
3000 W.O.G.
R-PTFE Seats
Sizes 1/4" - 1"
Full & Reduced Port

3-Piece Maintenance Design

*Style BVM3
Class 800
1920 W.O.G.
R-PTFE Seats
Sizes 1/4" - 2 1/2"
Full & Reduced Port

Actuated Ball Valves

Threaded or Flanged
All Pressure Classes
Spring Return or Double Acting
Sizes 1/4" - 8"

*Body/Trim Material: CS w/ 316SS Trim or CF8M w/ 316SS Trim.

*Available End Connections: NPT Ends, Socket Weld Ends, Socket Weld x FNPT Ends, or MNPT x FNPT Ends.

Check Valves



Double Disc Cast Iron

*Carbon Steel
*316 Stainless Steel
Style DD
125# - 1500#
Sizes 2" - 48"

Double Flange Body

*Carbon Steel
*316 Stainless Steel
Style DF (Flange)
150# - 1500#
Sizes 2" - 48"

Lug Body

*Carbon Steel
*Stainless Steel
Style DL (Lug Style)
150# - 1500# Flanged
Sizes 2" - 48"

Wafer Center Guided

Cast Iron
Carbon Steel
316 Stainless Steel
Style CW
125# - 300#
Sizes 2" - 12"

Globe Center Guided

Cast Iron
Carbon Steel
316 Stainless Steel
Style CG
125# - 300#
Sizes 2" - 24"

*All Cast Carbon Steel and Cast 316 Stainless Steel Body Double Disc Check Valves are Retainerless Design.

Y-Strainers



Cast Iron

Style B / Style B7
250# Threaded
Sizes 1/4" - 4"
(Style B7 Sizes 1/4" - 3")

Cast Iron

Style A-7
125 # & 250# Flanged
Sizes 2" - 24"

Cast Ductile Iron

Style BDI
250# Threaded
Sizes 1/2" - 2"

Cast Bronze

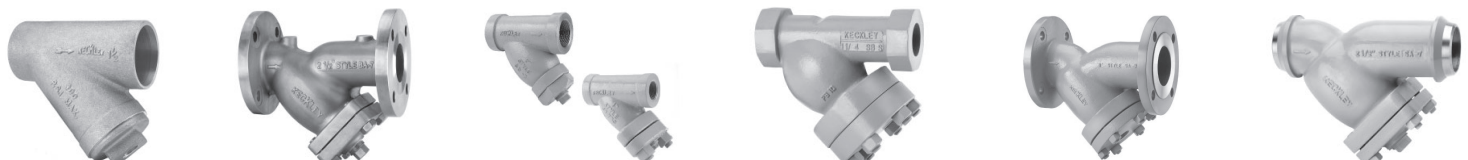
Style F-150 / Style E-150
125# Threaded or Solder Joint
Sizes 1/4" - 3"

Cast Bronze (Lead Free)

Style F7 / E7
125# Threaded or Solder Joint
Sizes 1/4" - 3"

Cast Bronze

Style F-300
250# Threaded
Sizes 1/4" - 3"



Cast Bronze

Style E-300
250# Solder Joint
Sizes 1/4" - 3"

Cast Bronze

Style BA-7
150# & 300# Flanged
Sizes 1/2" - 12"

Cast Carbon Steel

Style SB-7 / SB-7BC
600# Threaded or 600# Socket Weld
Sizes 1/4" - 3"

Cast Carbon Steel

Style SB
1500# Threaded or 1500# Socket Weld
Sizes 1/2" - 3"

Cast Carbon Steel

Style SA-7
150# & 300# Flanged
Sizes 1/2" - 24"

Cast Carbon Steel

Style SA-7
150# & 300# Butt Weld
Sizes 1/2" - 24"

Y-Strainers (cont.)



Cast Carbon Steel
Style SA
600# Flanged or
Butt Weld
Sizes ½" - 24"



Cast 316 Stainless Steel
Style SSB-7 / SSB-7BC
600# Threaded or
600# Socket Weld
Sizes ¼" - 3"



Cast 316 Stainless Steel
Style SSB
1500# Threaded or
1500# Socket Weld
Sizes ½" - 3"



Cast 316 Stainless Steel
Style SSA-7
150# & 300# Flanged
Sizes ½" - 24"



Cast 316 Stainless Steel
Style SSA-7
150# & 300# Butt Weld
Sizes ½" - 24"



Cast 316 Stainless Steel
Style SSA
600# Flanged or
Butt Weld
Sizes ½" - 24"

Basket Strainers



Cast Iron
Style KT-7
125# Threaded
Sizes ¾" - 3"



Cast Iron
Style D
125# & 250# Flanged
Sizes 2" - 12"



Cast Iron
Style GFV
125# & 250# Flanged
Sizes 2" - 24"



Cast Iron
Style GFV-K
125# Flanged
Sizes 2" - 16"



Cast Iron
Style GFVK-7
125# Flanged
Sizes 2" - 12"



Cast Ductile Iron
Style KF-7
125# Flanged
Sizes 1½" - 12"



Cast Bronze
Style BKF-7
150# Flanged
Sizes 1½" - 12"



Cast Bronze
Style BGFV
150# & 300# Flanged
Sizes 2" - 12"



Cast Carbon Steel
Style SD / SD-K*
150# & 300# Threaded
Sizes ¼" - 3"



Cast Carbon Steel
Style SD
150# & 300# Flanged
Sizes 2" - 12"



Cast Carbon Steel
Style SGFV / SGFV-K*
150# & 300# Flanged
Sizes 1½" - 14"



Cast 316 Stainless Steel
Style SSD / SSD-K*
150# & 300# Threaded
Sizes ¼" - 3"



Cast 316 Stainless Steel
Style SSGFV / SSGFV-K*
150# & 300# Flanged
Sizes 1½" - 14"

*Units with knob type covers are available in 150# class only.

Duplex Strainers



**Cast Iron
Cast Bronze
Cast Carbon Steel
Cast 316 Stainless Steel**
Threaded
Sizes ¾" - 2½"



**Cast Iron
Cast Bronze
Cast Carbon Steel
Cast 316 Stainless Steel**
Flanged
Sizes 1" - 8"



**Cast Iron
Cast Bronze
Cast Carbon Steel
Cast 316 Stainless Steel**
Flanged
Sizes 10" - 20"



**Fabricated
Copper Nickel
Carbon Steel
Stainless Steel**
150# - 600# Flanged
Sizes 6" - 24"

Duplex Options:



**Differential Pressure
Indicators**



DIN Electrical Probes

Fabricated Strainers



Fabricated - "Y"
Carbon Steel - FSA
Stainless Steel - FSSA
150# - 2500#
Flanged or Butt Weld
Sizes 2" - 36"



Fabricated - Basket
Carbon Steel - FB
Stainless Steel - FB
150# - 2500#
Flanged or Butt Weld
Sizes 2" - 36"

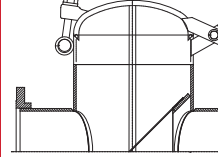


Fabricated - Tee
Carbon Steel - T
Stainless Steel - T
150# - 2500#
Flanged or Butt Weld
Sizes 2" - 48"

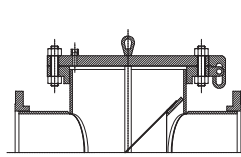
90/10 Copper Nickel, Alloy 20, Monel, and other materials, pressure classes or designs available upon request.

ASME Certified Code

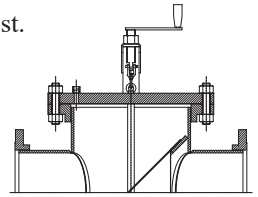
ASME "U" Code Stamp Available Upon Request.



Quick Open Cover
Style FB-Q



Bolted Slide Hinge Cover
Style FB-H



Integral Davit Swing Arm
Style FB-D

Special Options on Fabricated Strainers

- Differential Pressure Gauges
- Custom Blowdown Connections
- Custom Nozzle Positions
- Custom Basket Configurations
- Custom Venting & Special Drains
- Custom Floor Stands
- Special Coating & Galvanizing
- Custom Mounting Hardware
- Oversized Bodies

Temporary Strainers



Fabricated -Cone
Carbon Steel
Stainless Steel
Style TC
150# - 600# Flanged
Sizes 1½" - 24"



Fabricated -Basket
Carbon Steel
Stainless Steel
Style TB
150# - 600# Flanged
Sizes 1½" - 24"



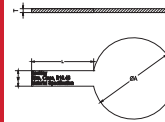
Fabricated -Plate
Carbon Steel
Stainless Steel
Style TP
150# - 600# Flanged
Sizes 1½" - 24"

Line Blind

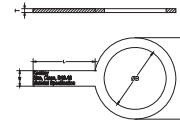


Fabricated
Carbon Steel - FLB
Stainless Steel - FLB
150# - 1500# Flanged or
Butt Weld
Sizes 1" - 24"

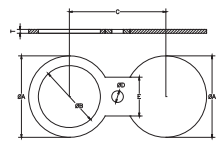
Blinds, Spacers, Spectacles



Paddle Blind
Carbon Steel
Stainless Steel
150# - 1500# Flanged
Sizes ½" - 24"



Paddle Spacers
Carbon Steel
Stainless Steel
150# - 1500# Flanged
Sizes ½" - 24"



Spectacle Blinds
Carbon Steel
Stainless Steel
150# - 1500# Flanged
Sizes ½" - 24"

Float & Lever Valves

All Available - Angle or Globe Pattern - Screwed or Flanged.



Bronze, Cast Iron, &
316 SS body & trim.
Double Seated
(Non Tight Closing)
Type 27
Sizes ½" - 12"



Bronze, Cast Iron, &
316 SS body & trim.
Single Seated
(Tight Closing)
Type 7
Sizes ½" - 2"



Bronze or Cast Iron body
Bronze trim.
Single Seated
(Tight Closing)
Type 77
Sizes 2" - 10"



Bronze, Cast Iron, &
316 SS body & trim.
Double Seated
(Non Tight Closing)
Type 62
Sizes ½" - 12"

Pump Accessories



Cast Iron
Style PSD (Suction
Diffuser)
125# Flanged
Sizes 2" x 1½" - 20"
x 20"



Fabricated
Style FPSD (Suction
Diffuser)
150# - 600# Flanged
Sizes 2½" x 2½" - 30"
x 30"



Cast Iron
Style TDV (Triple Duty
Valve)
125# Flanged
Sizes 2" - 20"

Control Valves (for complete offerings visit Keckley.com)



Bronze -Type AA
SS Trim - Steam Service
Nylon Trim - Air Service
For reduced pressure
above 40 PSI.
Threaded or Flanged
Sizes ½" - 6"



Bronze -Type AR
SS Trim - Steam Service
Nylon Trim - Air Service
For reduced pressure
below 40 PSI.
Threaded or Flanged
Sizes ½" - 6"



Bronze & Cast Iron
Bronze or SS Trim
Direct or Reverse Acting
Type 114, 114R, 119, 119R
Threaded or Flanged
Sizes ½" - 12"

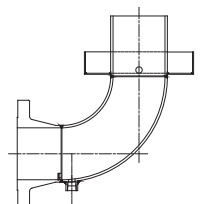


Bronze or Cast Iron
Bronze or SS Trim
Globe or Angle Pattern
Steam, Air, Gas, or Liquid
Type 135
Threaded or Flanged
Sizes ¾" - 8"

Drip Pan Elbows



Cast Iron
Drip Pan Elbow
Style DPE
Threaded or Flanged
Sizes ¾" - 10"
*6" & 8" Elbows have 125# Flanges



Fabricated
Drip Pan Elbow
Style FDPE
Threaded or Flanged
Sizes ¾" - 20"